

UNRL[®]

DECORATION CATALOG

INDEX

TEAM COLOR CHART	_____	3
DECORATION TYPES	_____	4
EMBROIDERY	_____	6
VINYL	_____	8
Twill	_____	11
CUSTOM PATCH	_____	13
SCREEN PRINT	_____	14
UNRL PRO STOCK COLLECTION	_____	15
UNRL SUBLIMATION COLLECTION	_____	41
CONTACT	_____	74

TEAM COLOR CHART

BLACK	WHITE	GRAPHITE 431C	GRAY 430C	SILVER 429C	PRISM GRAY 428C
MAROON 505C	CARDINAL RED 202C	SPORT RED 186C	BRIGHT RED 185C	TEXAS ORANGE 159C	DARK ORANGE 172C
SPORT ORANGE 166C	LIGHT ORANGE 1575C	SPORT GOLD 1235C	SPORT YELLOW 109C	BRIGHT YELLOW 3955C	FOREST GREEN 3435C
MASTERS GREEN 342C	KELLY GREEN 347C	SEAHAWK GREEN 368C	MIDNIGHT NAVY 289C	SPORT BLUE 294C	ROYAL BLUE 286C
BRIGHT ROYAL BLUE 285C	COLUMBIA BLUE 292C	DARK PURPLE 273C	SPORT PURPLE 268C	PINK 226C	LIGHT PINK 495C
BROWN 4625C	OLD GOLD 112C	VEGAS GOLD 4515C	LIGHT VEGAS GOLD 7502C		

This chart is for reference only. Pantone colors shown in print and on computer screens may vary from the actual colors. Compare to a Pantone book and request swatches from our preferred vendors for a true color representation. UNRL will require one of these Pantone colors for all sublimation products.

DECORATION TYPES

As a decorator, you are not limited to the following decoration types. If there is a type of application that you feel strongly will produce well on our product. Please send your account manager a sample to bring to our production team for approval.



DIRECT EMBROIDERY

- + Direct embroidery application
- + Most commonly used decoration type
- + Stock fonts are not recommended
- + For embroidery standards - see page 6



3D EMBROIDERY

- + Direct embroidery with foam pad to produce 3D effect
- + Recommended for all hat logos
- + For embroidery standards - see page 6



SILICONE TRANSFER

- + Heat press application
- + Recommended for 1-2 color logos
- + For vinyl standards - see page 8



TWILL

- + Sewn-on application
- + Recommended large full chest logos in 1-2 colors
- + For twill standards See page 11



SUBLIMATED TWILL

- + Sewn-on application
- + Cost-effective option to achieve 3+ colors with twill
- + Ideal for logos with gradients or fine detail
- + For twill standards - see page 11



WOVEN PATCH

- + Sewn-on application
- + Recommended for a premium hat decoration option
- + For custom patch standards - see page 13



LEATHER PATCH

- + Sewn-on application
- + Recommended for a premium hat decoration option
- + Limit to 1 color logos
- + For custom patch standards - see page 13



3D RUBBER PATCH

- + Sewn-on application
- + Recommended for a premium hat decoration option
- + For custom patch standards - see page 13



SCREEN PRINT

- + Recommended color limit: 3 colors
- + Recommended for logos with fine detail
- + For screen print standards - see page 14

DIRECT EMBROIDERY

STANDARDS

- + No more than 6 colors are to be used per logo
- + Ensure all connection threads are cut for clean embroidery finish
- + Must stay within the max dimensions provided per product
- + Use Weblon Performance Wear or similar quality backing to prevent puckering

Embroidery Tips

DIGITIZING

- + Use trusted digitizer
 - This will dictate the quality of the final product
 - Do not use stock fonts - these typically are not digitized for the correct material
 - Preferred Digitizing Vendor: Ignition Drawing

3D EMBROIDERY

- + 3D logos should be used on front panels of all ball caps - unless the logo is not suitable for 3D embroidery (thin lines, detailed, crest logo, etc.)
- + See asset folder for fonts that work well with 3D embroidery for garments and headwear

EMBROIDERY VENDORS

IGNITION DRAWING

Preferred Digitizing Vendor
(ignitiondrawing.com)

Madeira USA

Preferred Embroidery Thread
(madeirausa.com)

Robison-Anton

Preferred Embroidery Thread
(embstore.com)

POOR DIGITIZING

NOT ACCEPTED:



CONNECTION THREADS

NOT ACCEPTED:



VINYL TRANSFERS

STANDARDS

- + Pay attention to UNRL's Material/Fabric Compatibility to avoid peeling, dye-migration, etc.
- + Review vinyl application instructions (time, temp, pressure, peel)
- + Avoid press marks at all cost
- + Note the care instructions for the application type
- + Avoid using 3 or more colors - if using 3 or more colors consider using screen print or screen print/digital transfers (Apex Embroidery - Easy Ink)

Vinyl Tips

VINYL PEELING

- + Lack of pressure
 - Ensure you are using the correct application instructions per your vinyl vendor
- + Temperature
 - Invest in a laser thermometer to check and calibrate your heat presses

DYE MIGRATION

Most of our products are polyester blends. This means if incorrect vinyl is used you will experience bleeding. This occurs when the dye from the garment bleeds into the vinyl. By simply using dye migration vinyl, such as Silicone (Stahls), you can avoid these types of production mistakes.

VINYL VENDORS

STAHL'S

+ Silicone Dye-Block™

- Blocks dye migration, even on sublimated polyester
- Stretchable, with good recovery
- Matte finish, silicone feel
- Not recommended for layering (1-color application only)

HEAT TRANSFER WAREHOUSE

+ Siser Easy Weed Stretch

- Soft handfeel
- Stretchable, with good recovery
- Ability to layer

DYE MIGRATION

NOT ACCEPTED:



NOTICEABLE BLEED



BLOTCHING BLEED

VINYL TIPS

ELIMIINATING PRESS MARKS:

- + Limit the use of vinyl that exceeds 300°
- + Use heat press pads
 - Minimizes size of scorch marks
- + Use a heated lower heat platen
 - Heats adhesive from the bottom and top of the platen
- + Spray with water bottle and gently rub the scorch mark away with microfiber cloth

PRESS MARKS

Because most of our products are polyester blends, heat press marks are unavoidable. By following the suggestions above, you can help minimize the damage done to the garment. With that being said, we highly recommend limiting the use of vinyl all together.

HEAT PRESS MARK NOT ACCEPTED:



TWILL DECORATION

STANDARDS

- + Specify Pantone colors needed when submitting the order
- + Limited Sublimated Twill for medium or small emblems - if looking to achieve a full chest large emblem, consider using a kiss cut tackle twill

TWILL VENDORS

STAHL'S

Preferred stock twill vendor
(stahls.com)

Twill USA

Preferred stock twill vendor
(Twillusa.com)

Apex Transfers

Preferred sublimated twill patch vendor
Preferred custom twill (kiss cut/tackle twill) patch vendor
(apextransfers.com)

TWILL TIPS

- + Add dimension by combining twill and direct embroidery
- + Use an accent thread color to stitch the twill to give a 1-color twill a 2-tone look
- + Sublimated twill is a cost-effective option for logos that are 3+ colors

KISS CUT TWILL

The benefit of Kiss Cut Twill is achieving a multi-color or multi-layer look, without having to manually place each piece or layer by hand. With only one placement stitch needed, you save time by not stopping and starting your embroidery machine. This technique is preferred with full chest artwork.

KISS CUT TWILL

APPROVED EXAMPLE:



CUSTOM PATCH DECORATION

STANDARDS

- + Standard Sizes: Circle 2" W / Square 1.5" W
- + 2MM sew groove (Leather and Rubber)
- + Satin stitch, non-woven backing (Woven)

CUSTOM PATCH TIPS

APPLICATION

- + Slow your machine speed down
- + Use a puddly adhesive - sprays and glue are messy and leave stains if exposed to the wrong area of the garment
- + Leatherworks does not provide a sew file, this needs to be aquired elsewhere
- + Great premium option for headwear

CUSTOM PATCH VENDORS

Leatherworks MN

Preferred leather patch vendor
(leatherworksmn.com)

Arrow Emblems

Preferred rubber patch vendor
Preferred woven patch vendor
(arrowemblems.com)

Apex Transfers

Preferred sublimated twill patch vendor
(apextranfers.com)

SCREEN PRINT DECORATION

STANDARDS

- + ELT - Plastisol Ink ONLY
- + Products approved for screen print decoration:
 - Crossover Hoodie II
 - Crossover Crewneck
 - Stride Short Sleeve / Long Sleeve
 - Ultra Tee / Long Sleeve

Please submit a sample of your screenprint quality to your account manager before proceeding with the bulk production.

SCREEN PRINT TIPS

INK:

- + ELT - Plastisol Ink ONLY
 - Avoids dye-migration
 - Cuts the flash time in half
 - Cures at 250 -270°

UNRL PRO STOCK COLLECTION

Pre-book and in-season inventory items.

Our vision is to create an authentic collaboration with UNRL as you enhance our products for your clients. Adhere to these guidelines, ensuring your final products embody the essence of our brand.

DECORATION STANDARDS

CROSSOVER HOODIE II

MAX DIMENSIONS:

LEFT/RIGHT CHEST:

- Small Emblem: 3" W x 3" H
- Direct/3D Embroidery

LEFT/RIGHT SLEEVE:

- Small Emblem: 3" W x 3" H
- Direct Embroidery or Custom Patch (Rubber or Woven)

CENTER CHEST:

- Small Emblem: 4" W x 3" H
- Direct Embroidery or Custom Patch (Woven)

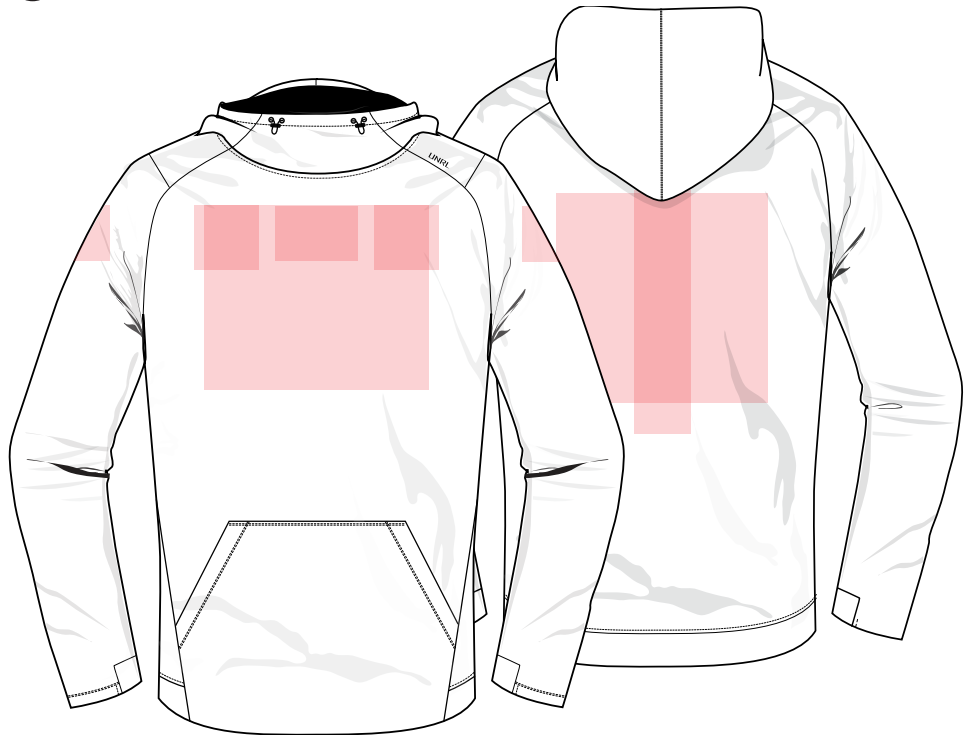
- Large Emblem: 10" W x 10" H
- Tackle Twill Patch or 3D Embroidery

FULL BACK:

- Name Height: 2" H
- Number Height: 8" H
- Stock Numbers/Letters

SINE BAR:

- 2" W x 12" H
- Twill or Direct Embroidery



APPROVED DECORATION MATERIAL:

+ DIRECT EMBROIDERY

+ 3D EMBROIDERY

- UNRL Varsity Text (Assets in UNRL design folder)

+ CUSTOM PATCH (RUBBER, WOVEN, LEATHER)

+ TWILL (SUBLIMATION OR TACKLE)

+ SCREEN PRINT

- ELT Plastisol Ink only
- Do not exceed 3 colors

+ SILICONE TRANSFER

- Recommended 1 Color

DECORATION STANDARDS

CROSSOVER HALF-ZIP HOODIE

MAX DIMENSIONS:

LEFT/RIGHT CHEST:

- Small Emblem: 3" W x 3" H
- Direct Embroidery or Custom Patch (Woven)

LEFT/RIGHT SLEEVE:

- Small Emblem: 3" W x 3" H
- Direct Embroidery or Custom Patch (Rubber or Woven)

EXTERIOR PLACKET:

- Wordmark: 1" W x 10" H
- Silicone Transfer Only

FULL BACK:

- Large Emblem: 10" W x 10" H
- Name Height: 2" H
- Number Height: 8" H
- Stock Twill Numbers/Letters

SINE BAR:

- 2" W x 12" H
- Twill Letters or Direct Embroidery



APPROVED DECORATION MATERIAL:

- + DIRECT EMBROIDERY
- + 3D EMBROIDERY
- + CUSTOM PATCH (RUBBER, WOVEN, LEATHER)
- + TWILL (SUBLIMATION OR TACKLE)
- + SCREEN PRINT
- ELT Plastisol Ink only
- Do not exceed 3 colors
- + SILICONE TRANSFER
- Recommended 1 Color

DECORATION STANDARDS

HIGH STREET HOODIE

LOGO STANDARDS:

UPPER CENTER CHEST:

- Small Emblem: MAX: 4" W x 3" H
- Small Emblem: MIN: 2.75" W x 1.5" H
- 3D or Direct Embroidery

LEFT/RIGHT SLEEVE:

- Small Emblem: 2.5" W x 2.5" H
- Custom Patches are preferred (Rubber or Woven)

DRAWSTRING HOLSTER:

- Wordmark: 2.25" W x 0.5"H
- Capitalized
- Limit the amount of characters
- Silicone (STAHL) Heat Transfer Vinyl
 - Black, White or Gray

FONT OPTIONS:

MINNESOTA

- Aldo

MINNESOTA

- Faceoff

MINNESOTA

- NY Rangers

MINNESOTA

- Geom Graphic Bold

MINNESOTA

- Industry Bold

MINNESOTA

- Jawbreak



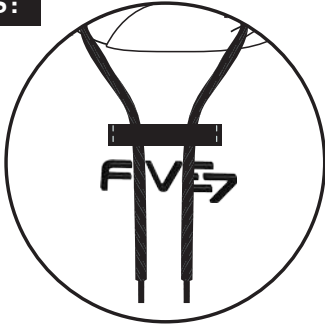
** Stock fonts not permitted

** Wordmark logos are permitted - see example on next page (PGA)

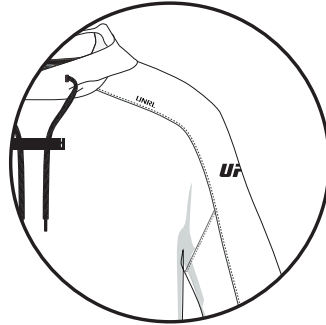
APPROVED DECORATION MATERIAL:

- + DIRECT EMBROIDERY
- + 3D EMBROIDERY
- + CUSTOM PATCH
- + SILICONE TRANSFER

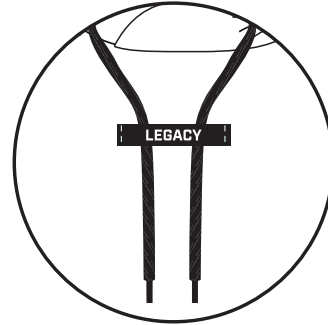
EXAMPLES:



Upper Center Chest



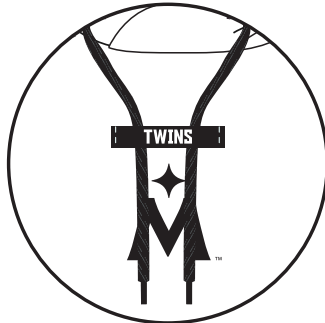
Left Sleeve



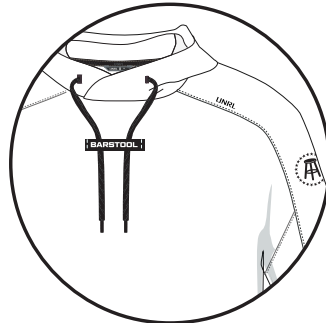
Drawstring Holster



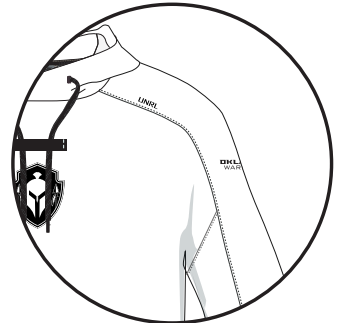
Upper Center Chest
Drawstring Holster
Left Sleeve



Upper Center Chest
Drawstring Holster



Drawstring Holster
Left Sleeve

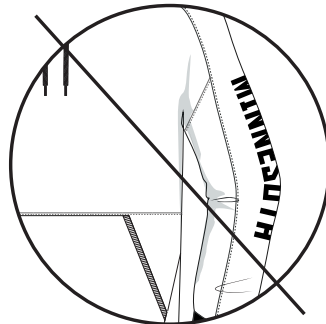


Upper Center Chest
Left Sleeve

NOT APPROVED:



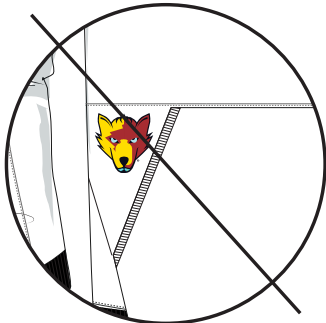
Full Chest



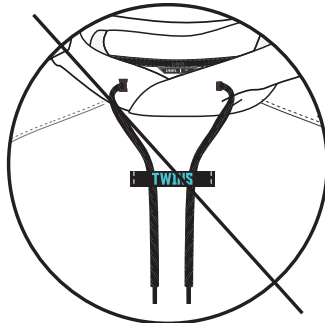
Full Sleeve



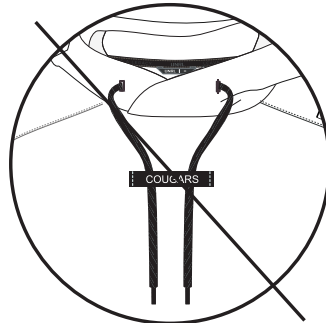
Back Decoration



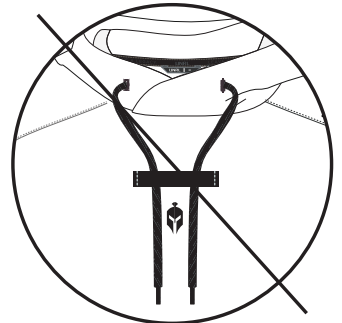
Not Approved
Decoration Locations



Not Approved
Silicone Transfer Colors



Stock Font



Min. Dimensions

DECORATION STANDARDS

CROSSOVER CREWNECK

LOGO STANDARDS:

LEFT/RIGHT CHEST:

- Small Emblem: 3" W x 3" H
- Direct Embroidery or Custom Patch (Woven)

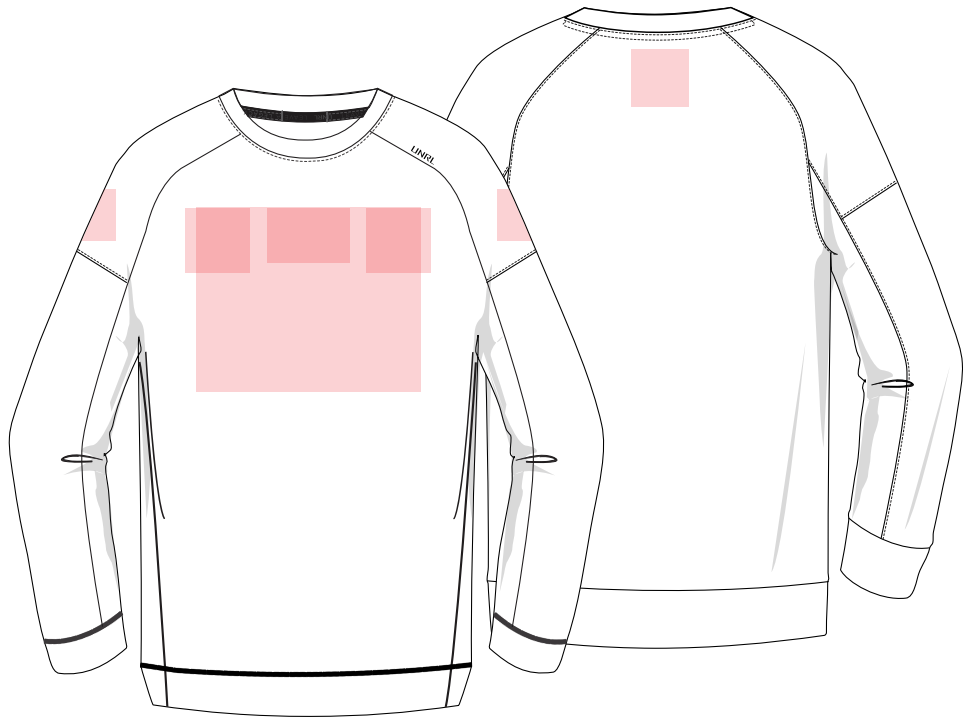
LEFT/RIGHT SLEEVE:

- Small Emblem: 3" W x 3" H
- Direct Embroidery or Custom Patch (Rubber or Woven)

CENTER CHEST:

- Small Emblem: 4" W x 3" H
- Direct Embroidery or Custom Patch (Woven)

- Large Emblem: 10" W x 10" H
- Direct Embroidery or Custom Patch (Twill)



APPROVED DECORATION MATERIAL:

+ DIRECT EMBROIDERY

+ 3D EMBROIDERY

- UNRL Varsity Text (Assets in UNRL design folder)

+ CUSTOM PATCH (RUBBER, WOVEN, LEATHER)

+ TWILL (SUBLIMATION OR TACKLE)

+ SCREEN PRINT

- ELT Plastisol Ink only
- Do not exceed 3 colors

+ SILICONE TRANSFER

- Recommended 1 Color

DECORATION STANDARDS

CROSS-UP HOODIE

LOGO STANDARDS:

LEFT/RIGHT CHEST:

- Small Emblem: 3" W x 3" H
- Direct Embroidery or Custom Patch (Woven)

LEFT/RIGHT SLEEVE:

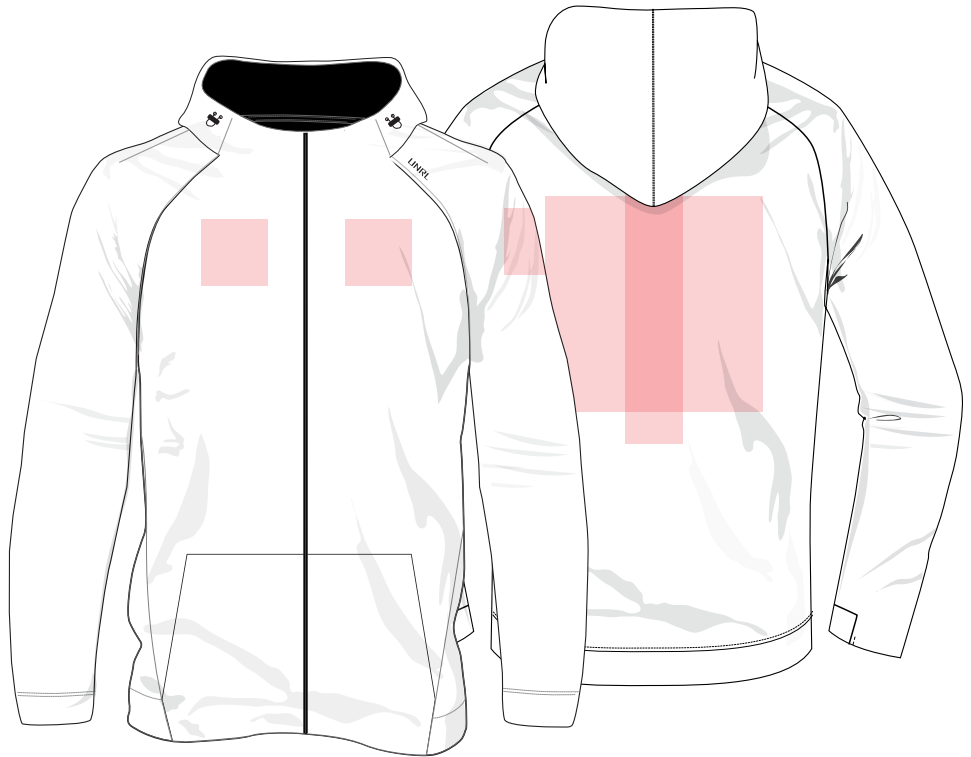
- Small Emblem: 3" W x 3" H
- Direct Embroidery or Custom Patch (Rubber or Woven)

FULL BACK:

- Large Emblem: 10" W x 10" H
- Name Height: 2" H
- Number Height: 8" H
- Stock Twill Numbers/Letters

SPINE BAR:

- 2" W x 12" H
- Twill Letters or Embroidery



APPROVED DECORATION MATERIAL:

- + DIRECT EMBROIDERY
- + 3D EMBROIDERY
- + CUSTOM PATCH (RUBBER, WOVEN, LEATHER)
- + TWILL (SUBLIMATION OR TACKLE)
- + SILICONE TRANSFER
- Recommended 1 Color

DECORATION STANDARDS

TRANSITION FULL ZIP

LOGO STANDARDS:

LEFT/RIGHT CHEST:

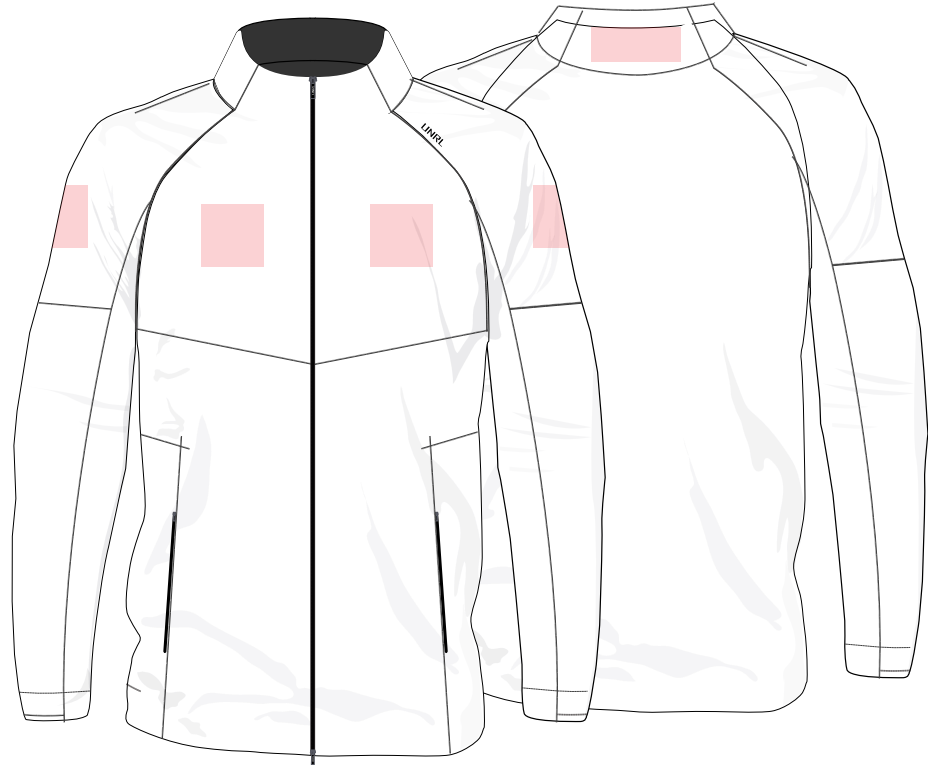
- Small Emblem: 3" W x 3" H
- Direct Embroidery or Custom Patch (Woven)

LEFT/RIGHT SLEEVE:

- Small Emblem: 3" W x 3" H
- Direct Embroidery or Custom Patch (Rubber or Woven)

BACK NECK:

- Small Emblem: 4" W x 2" H
- Silicone Transfer Only



APPROVED DECORATION MATERIAL:

- + DIRECT EMBROIDERY
- + 3D EMBROIDERY
- + CUSTOM PATCH (RUBBER, WOVEN, LEATHER)
- + TWILL (SUBLIMATION OR TACKLE)
- + SILICONE TRANSFER
- Recommended 1 Color

DECORATION STANDARDS

ELITE QUARTER ZIP

LOGO STANDARDS:

LEFT/RIGHT CHEST:

- Small Emblem: 3" W x 3" H
- Direct Embroidery or Custom Patch (Woven)

LEFT/RIGHT SLEEVE:

- Small Emblem: 3" W x 3" H
- Direct Embroidery or Custom Patch (Rubber or Woven)

ZIPPER PLACKET:

- Small Emblem: 0.4" W x 4" H
- Silicone Transfer Only

BACK NECK:

- Small Emblem: 4" W x 2" H
- Silicone Transfer Only



APPROVED DECORATION MATERIAL:

- + DIRECT EMBROIDERY
- + 3D EMBROIDERY
- + CUSTOM PATCH (RUBBER, WOVEN, LEATHER)
- + TWILL (SUBLIMATION)
- + SILICONE TRANSFER
- Recommended 1 Color

DECORATION STANDARDS

HIGHLANDS QUARTER ZIP

LOGO STANDARDS:

LEFT/RIGHT CHEST:

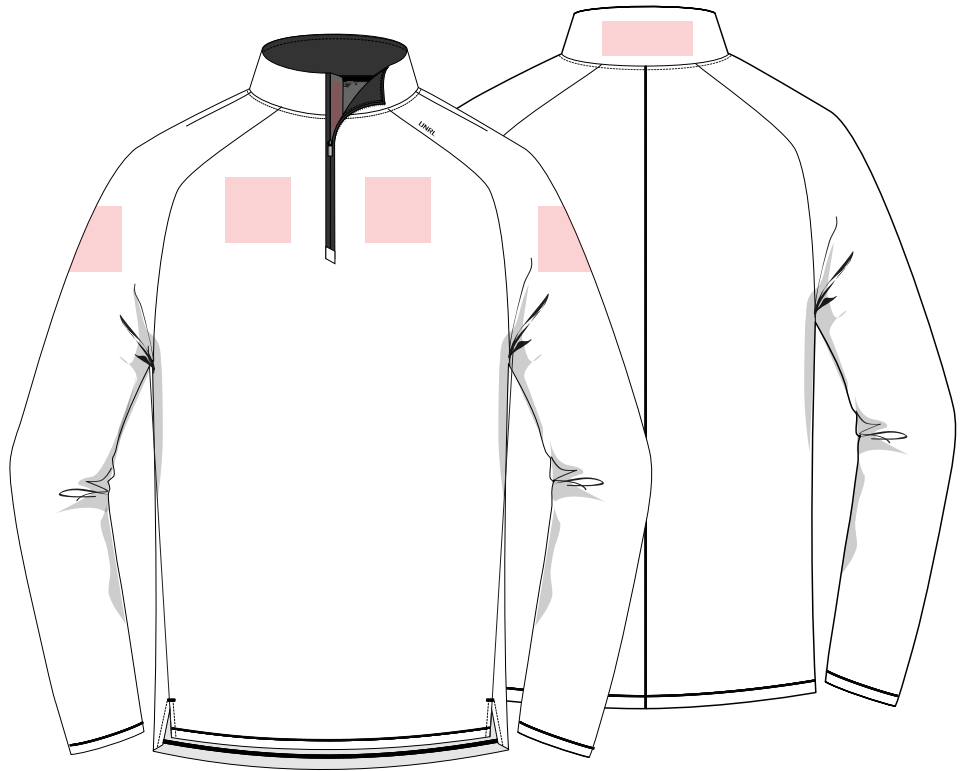
- Small Emblem: 3" W x 3" H
- Direct Embroidery or Custom Patch (Woven)

LEFT/RIGHT SLEEVE:

- Small Emblem: 3" W x 3" H
- Direct Embroidery or Custom Patch (Rubber or Woven)

BACK NECK:

- Small Emblem: 4" W x 2" H
- Silicone Transfer Only



APPROVED DECORATION MATERIAL:

+ DIRECT EMBROIDERY

- White colorway backing through - trim/tear away the backing as close to the logo as possible

+ CUSTOM PATCH (RUBBER, WOVEN, LEATHER)

+ SILICONE TRANSFER

- Recommended for white colorway

DECORATION STANDARDS

ULTRA TEE // LONG SLEEVE

LOGO STANDARDS:

LEFT/RIGHT CHEST:

- Small Emblem: 3" W x 3" H

LEFT/RIGHT SLEEVE:

- Small Emblem: 3" W x 3" H

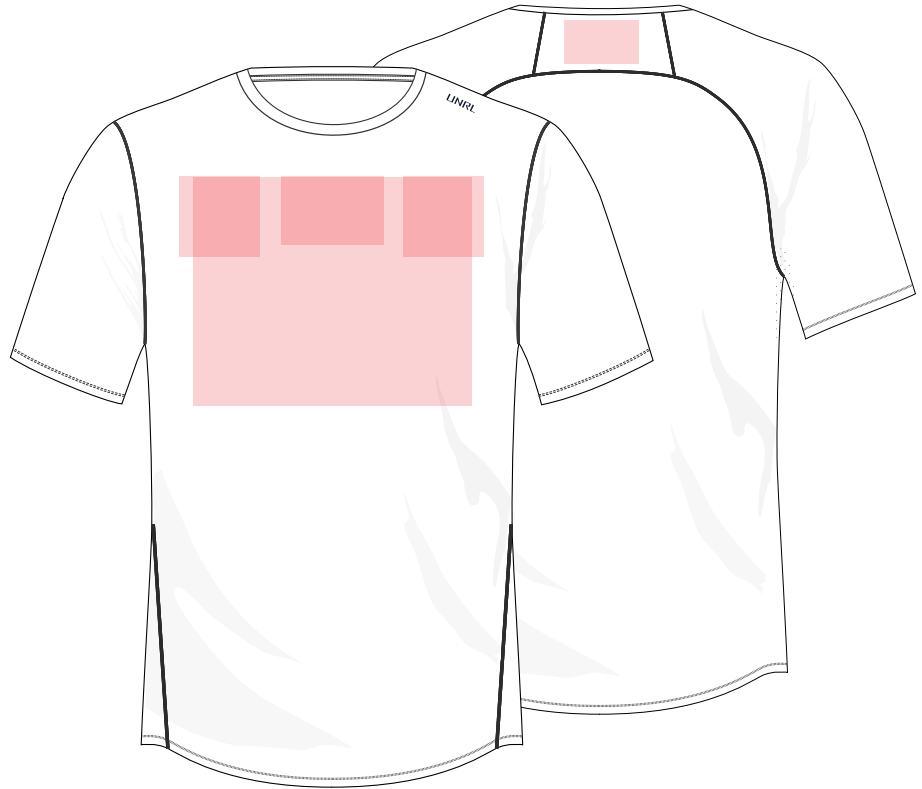
CENTER CHEST:

- Small Emblem: 4" W x 3" H

- Large Emblem: 10" W x 10" H

BACK NECK:

- Small Emblem: 3" W x 2" H



APPROVED DECORATION MATERIAL:

+ SILICONE TRANSFER

+ SCREEN PRINT

DECORATION STANDARDS

STRIDE SHORT SLEEVE // LONG SLEEVE

LOGO STANDARDS:

LEFT/RIGHT CHEST:

- Small Emblem: 3" W x 3" H

LEFT/RIGHT SLEEVE:

- Small Emblem: 3" W x 3" H

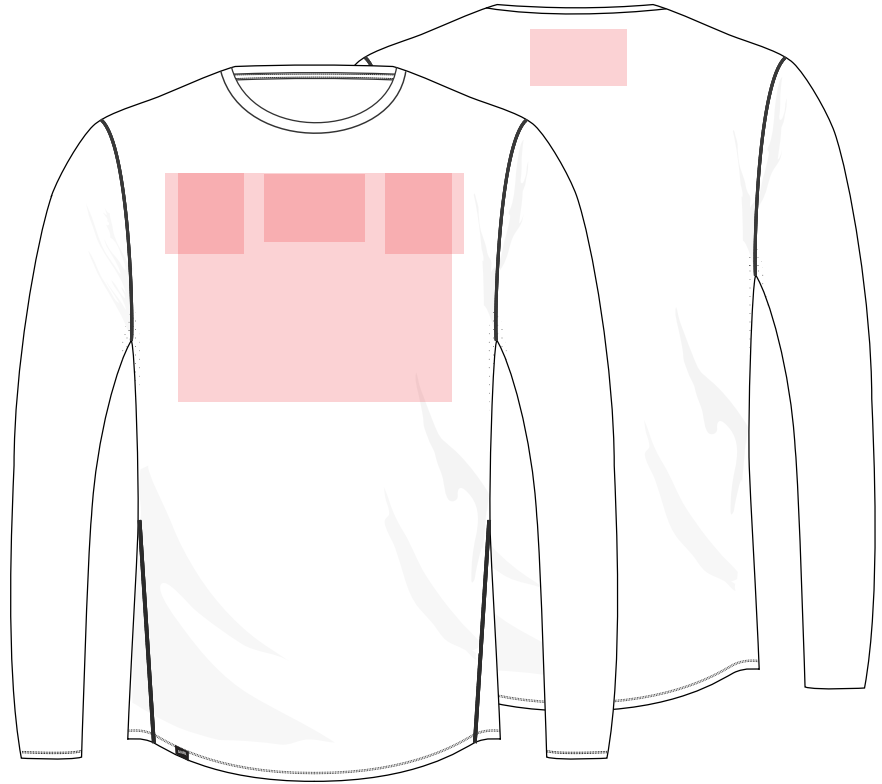
CENTER CHEST:

- Small Emblem: 4" W x 3" H

- Large Emblem: 10" W x 10" H

BACK NECK:

- Small Emblem: 4" W x 3" H



APPROVED DECORATION MATERIAL:

+ SILICONE TRANSFER

+ SCREEN PRINT

DECORATION STANDARDS

LEGEND POLO

LOGO STANDARDS:

LEFT/RIGHT CHEST:

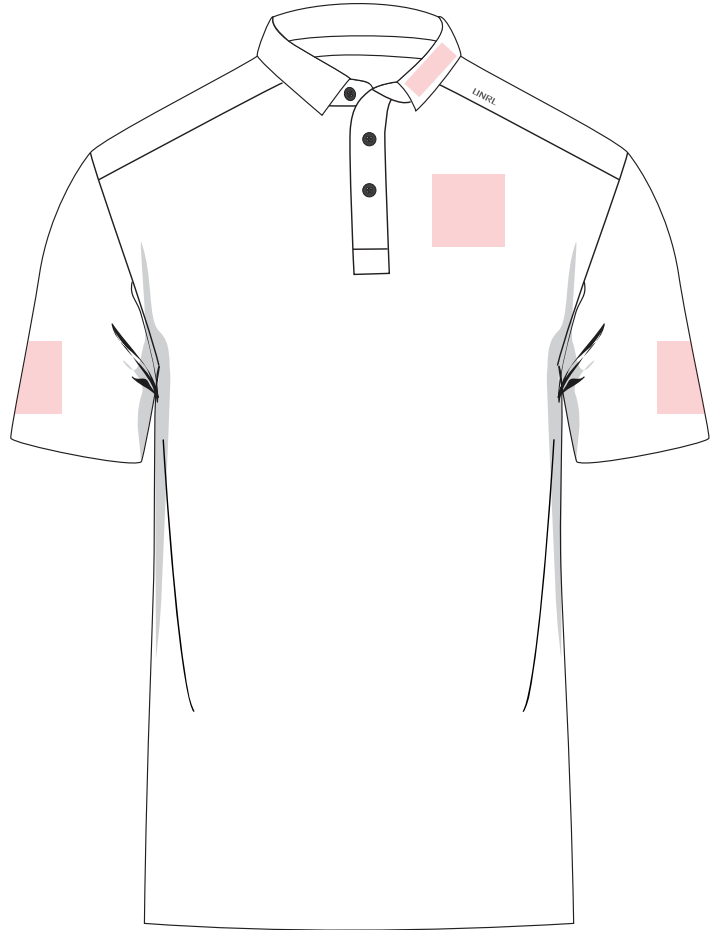
- Small Emblem: 3" W x 3" H

LEFT/RIGHT SLEEVE:

- Small Emblem: 3" W x 3" H

LEFT COLLAR:

- Number/Small Emblem: 1.5" W x 2.5" H
- Silicone Transfer Only



APPROVED DECORATION MATERIAL:

- + DIRECT EMBROIDERY
- + SILICONE TRANSFER
- + SCREEN PRINT

DECORATION STANDARDS

TRADITION POLO

LOGO STANDARDS:

LEFT/RIGHT CHEST:

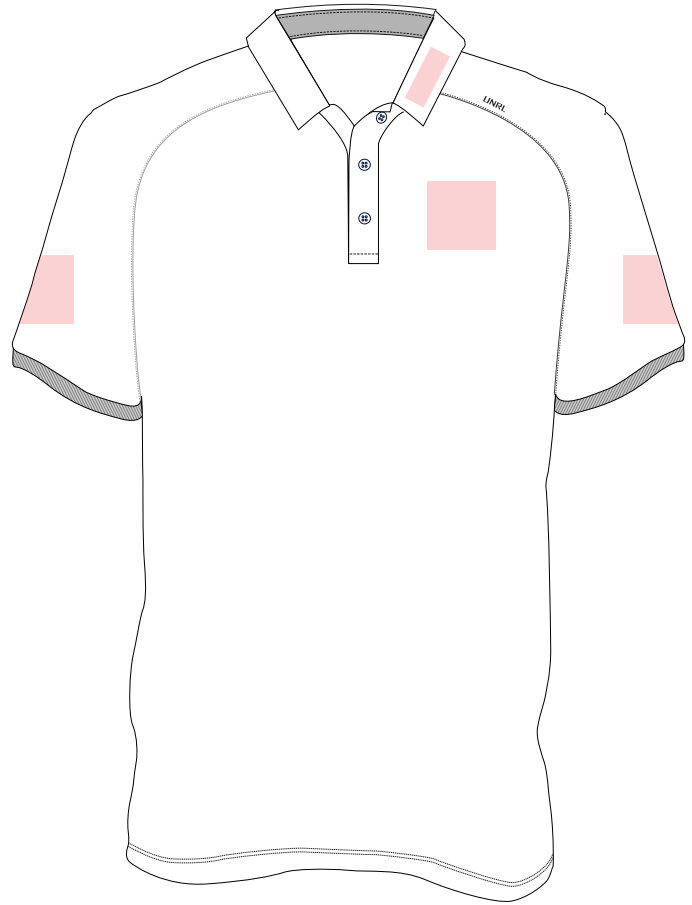
- Small Emblem: 3" W x 3" H

LEFT/RIGHT SLEEVE:

- Small Emblem: 3" W x 3" H

LEFT COLLAR:

- Number/Small Emblem: 1.5" W x 2.5" H
- Silicone Transfer Only



APPROVED DECORATION MATERIAL:

- + DIRECT EMBROIDERY
- + SILICONE TRANSFER
- + SCREEN PRINT

DECORATION STANDARDS

PRINTED POLO

LOGO STANDARDS:

LEFT/RIGHT CHEST:

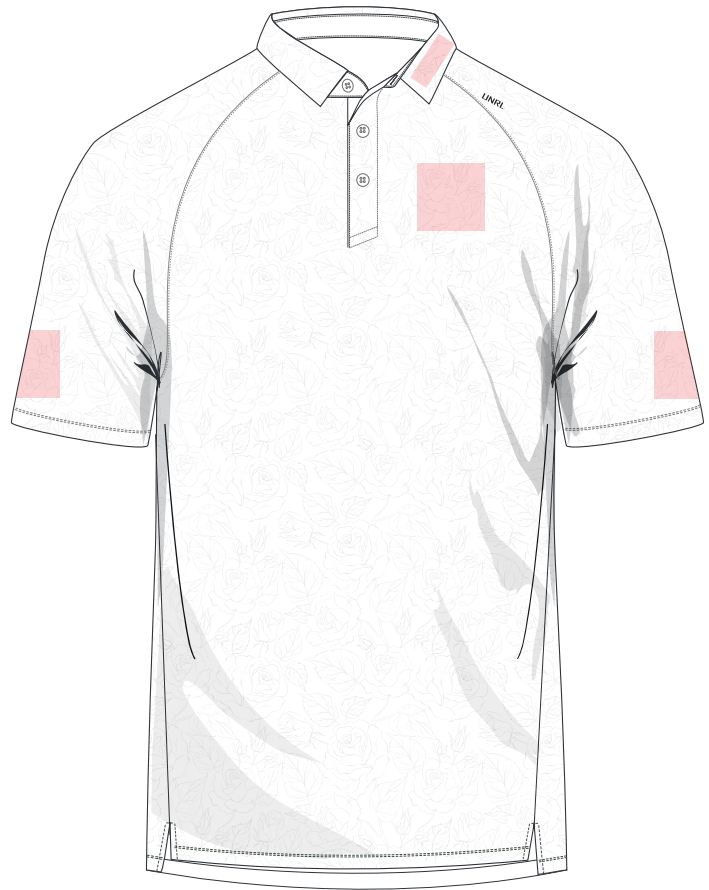
- Small Emblem: 3" W x 3" H

LEFT/RIGHT SLEEVE:

- Small Emblem: 3" W x 3" H

LEFT COLLAR:

- Number/Small Emblem: 1.5" W x 2.5" H
- Silicone Transfer Only



APPROVED DECORATION MATERIAL:

+ DIRECT EMBROIDERY

- Not approved for the Catamaran Printed Polo (Silicone Transfer Only)

+ SILICONE TRANSFER

DECORATION STANDARDS

APEX JACKET

LOGO STANDARDS:

LEFT/RIGHT CHEST:

- Small Emblem: 3" W x 3" H
- Direct Embroidery or Custom Patch (Woven)

LEFT/RIGHT SLEEVE:

- Small Emblem: 3" W x 3" H
- Direct Embroidery or Custom Patch (Rubber or Woven)

HOOD:

- Number/Small Emblem: 2.5" W x 2.5" H



APPROVED DECORATION MATERIAL:

- + DIRECT EMBROIDERY
- + CUSTOM PATCH (RUBBER OR WOVEN)
- + TWILL (SUBLIMATION OR TACKLE)
- + SILICONE TRANSFER
- Recommended 1 Color

DECORATION STANDARDS

UNRL PERFORMANCE PANT (APEX)

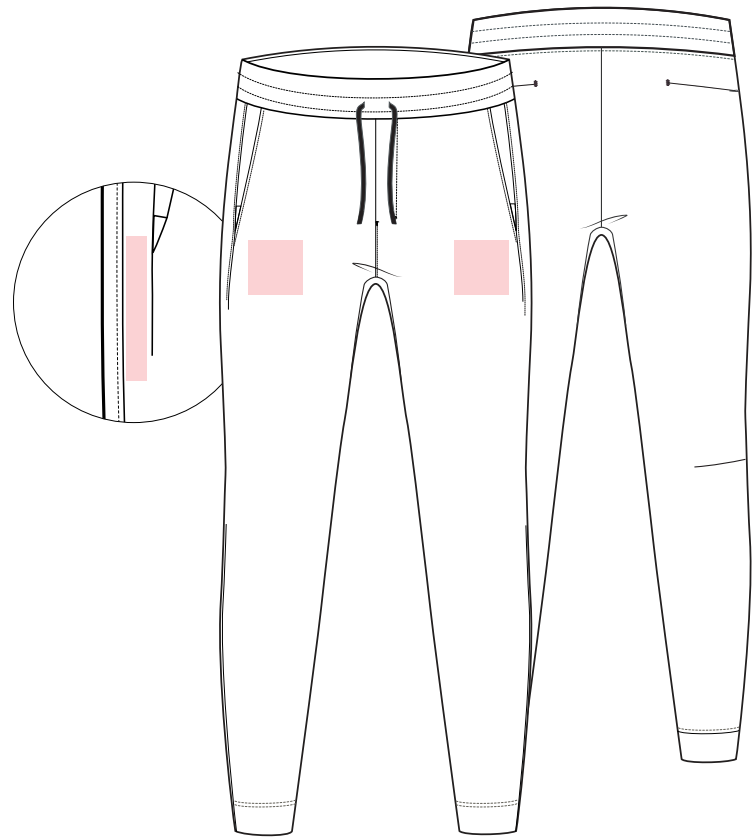
LOGO STANDARDS:

LEFT/RIGHT THIGH:

- Small Emblem: 4" W x 3" H
- Direct Embroidery or Custom Patch (Rubber or Woven)

SIDE SEAM:

- 0.5" W x 4" H
- Silicone Transfer Only



APPROVED DECORATION MATERIAL:

- + DIRECT EMBROIDERY
- + CUSTOM PATCH (RUBBER OR WOVEN)
- + SILICONE TRANSFER
- 1 Color only

DECORATION STANDARDS

HIGH STREET JOGGER

LOGO STANDARDS:

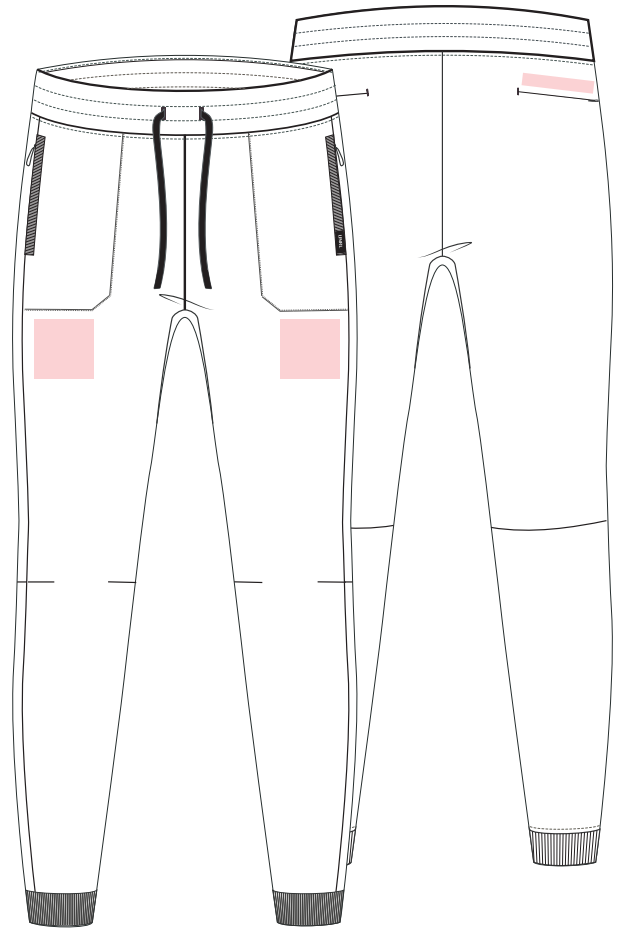
LEFT/RIGHT THIGH:

- Small Emblem: 4" W x 3" H
- Direct Embroidery or Custom Patch (Rubber or Woven)

BACK POCKET:

- 0.5" W x 4" H
- Silicone Transfers Only

** Recommended to use the same logo from the High Street Hoodie in 3D embroidery



APPROVED DECORATION MATERIAL:

- + DIRECT EMBROIDERY
- + 3D EMBROIDERY
- + CUSTOM PATCH (RUBBER OR WOVEN)
- + SILICONE TRANSFER
- 1 Color Only

DECORATION STANDARDS

STRIDE SHORT

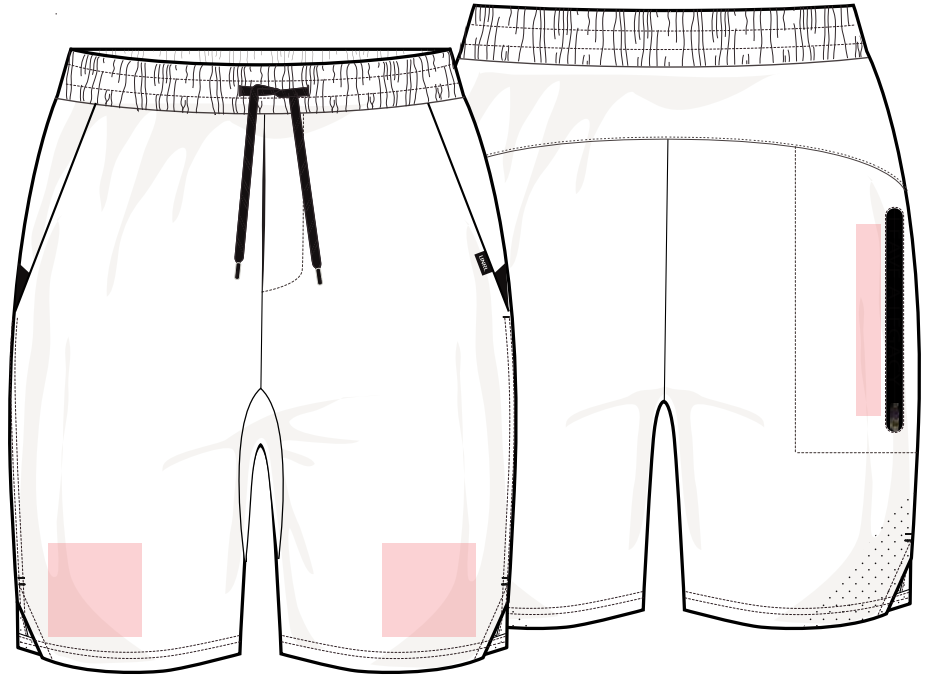
LOGO STANDARDS:

LEFT/RIGHT THIGH:

- Small Emblem: 3" W x 3" H

SIDE POCKET:

- Wordmark: 0.5" W x 4" H



APPROVED DECORATION MATERIAL:

- + SILICONE TRANSFER
- + SCREEN PRINT

DECORATION STANDARDS

SLOUCH BEANIE

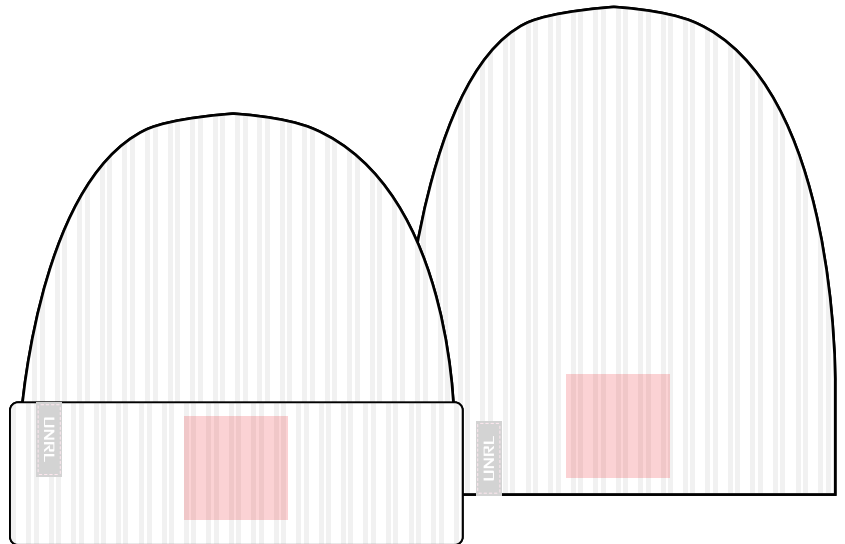
LOGO STANDARDS:

FRONT CENTER

- Small Emblem: 4" W x 3" H
- 3D/Direct Embroidery or Custom Patch (Leather, Rubber, Woven)

** The customer must choose one way they want to wear the beanie. Once it is decorated, it cannot be worn both ways.

** Only one logo is permitted on this product



APPROVED DECORATION MATERIAL:

- + DIRECT EMBROIDERY
- + 3D EMBROIDERY
- + CUSTOM PATCH (RUBBER, WOVEN, LEATHER)

DECORATION STANDARDS

ELITE WINTER KNIT

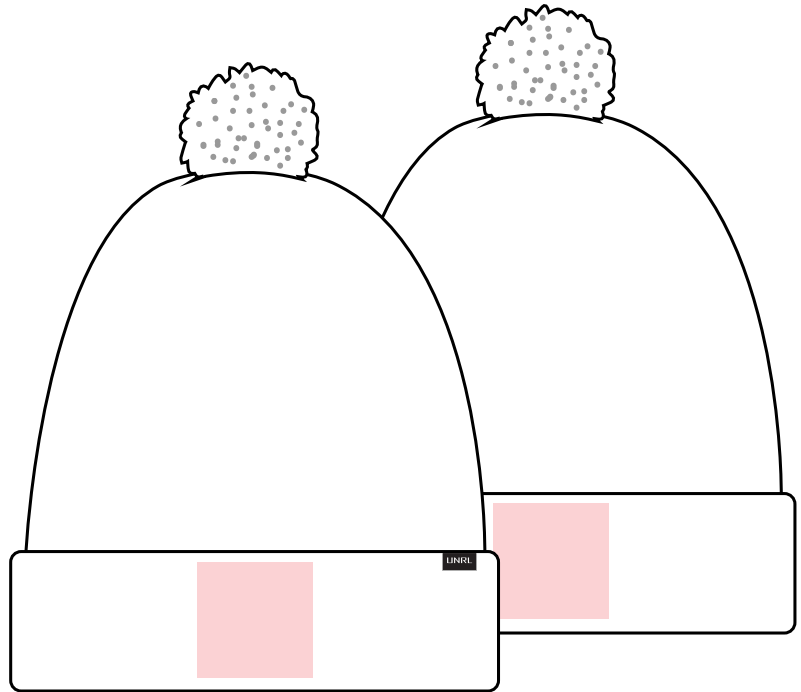
LOGO STANDARDS:

FRONT CENTER

- Small Emblem: 3" W x 2" H
- 3D/Direct Embroidery or Custom Patch (Rubber, Woven)

BACK CENTER

- Small Emblem: 3" W x 2" H
- 3D/Direct Embroidery or Custom Patch (Rubber, Woven)
- Number: 2" H



APPROVED DECORATION MATERIAL:

- + DIRECT EMBROIDERY
- + 3D EMBROIDERY
- + CUSTOM PATCH (RUBBER OR WOVEN)

DECORATION STANDARDS

UNRL GOLF VINTAGE ROPE SNAPBACK [MID-PRO]

LOGO STANDARDS:

LEFT/RIGHT SIDE PANEL:

- Small Emblem: 3" W x 2" H
- Direct Embroidery Recommended



APPROVED DECORATION MATERIAL:

- + DIRECT EMBROIDERY
- + SILICONE TRANSFER

DECORATION STANDARDS

MID-PRO VENTED/VENTED ROPE SNAPBACK

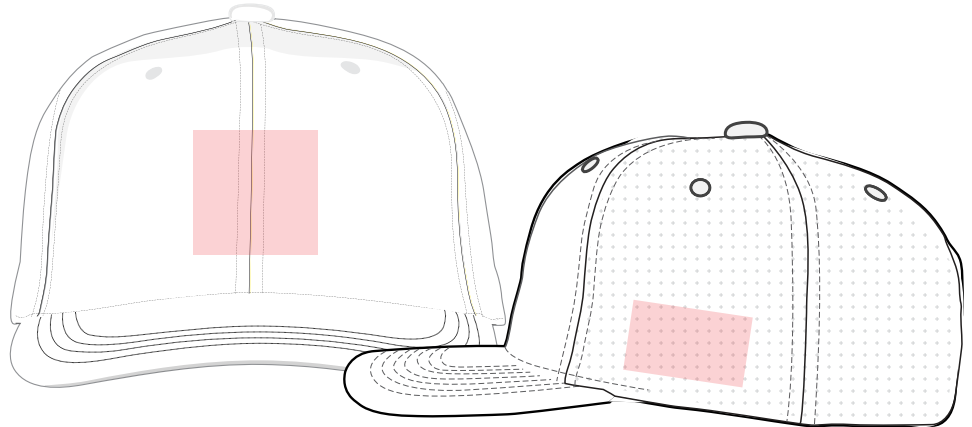
LOGO STANDARDS:

FRONT CROWN:

- Small Emblem: 4" W x 2.25" H
- **Custom Patch Only**

LEFT/RIGHT SIDE PANEL:

- Small Emblem: 3" W x 2" H
- Direct Embroidery or Silicone Transfer



APPROVED DECORATION MATERIAL:

- + **DIRECT EMBROIDERY**
- + **CUSTOM PATCH (RUBBER, WOVEN, LEATHER)**

** Our most recent shipment has a stiff buckram making it very difficult to decoration with direct embroidery or 3D embroidery. Until this problem has been resolved, we ask that this style of headwear is decorated with a custom patch only.

DECORATION STANDARDS

MID-PRO TRUCKER SNAPBACK

LOGO STANDARDS:

FRONT CROWN:

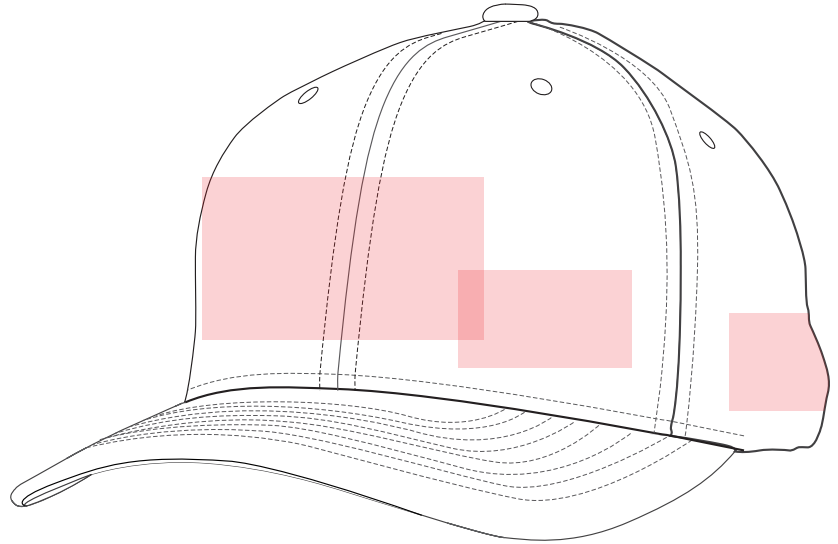
- Small Emblem: 4" W x 2.25" H
- 3D/Direct Embroidery or Custom Patch
(Leather, Rubber, Woven)

LEFT CROWN PANEL:

- Small Emblem: 2.75" W x 2" H
- Direct Embroidery Recommended

LEFT/RIGHT PANEL:

- Small Emblem: 3" W x 2" H
- Direct Embroidery Recommended



APPROVED DECORATION MATERIAL:

- + DIRECT EMBROIDERY
- + 3D EMBROIDERY
- + CUSTOM PATCH (RUBBER, WOVEN, LEATHER)

DECORATION STANDARDS

FLOPFIT PERFORMANCE STRAPBACK

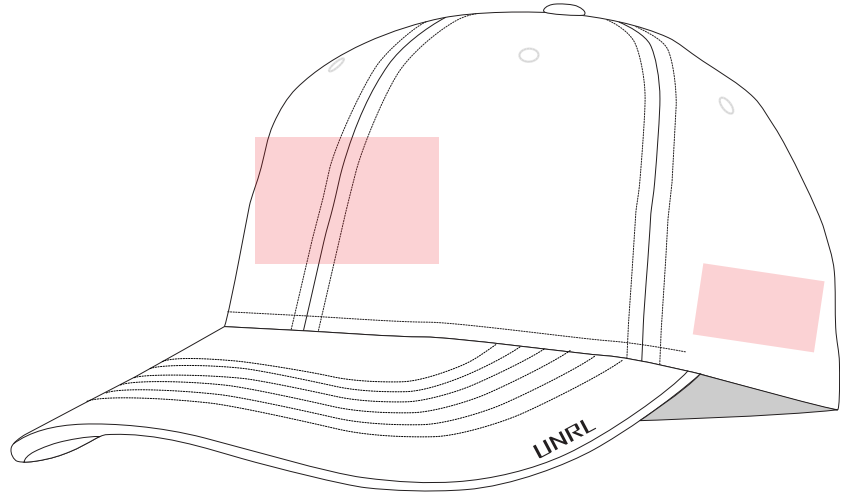
LOGO STANDARDS:

FRONT CROWN:

- Small Emblem: 3" W x 2" H
- 3D/Direct Embroidery or Custom Patch (Leather, Rubber, Woven)

LEFT/RIGHT SIDE PANEL:

- Small Emblem: 3" W x 2" H
- Direct Embroidery Recommended



APPROVED DECORATION MATERIAL:

- + DIRECT EMBROIDERY
- + 3D EMBROIDERY
- + CUSTOM PATCH (RUBBER, WOVEN, LEATHER)
- + SILICONE TRANSFER

DECORATION STANDARDS

TRAIN X TRAVEL BACKPACK

LOGO STANDARDS:

LEFT PANEL:

- Small Emblem: 3" W x 3" H

** Only one logo permitted on this product



APPROVED DECORATION MATERIAL:

- + DIRECT EMBROIDERY
- + 3D EMBROIDERY
- + CUSTOM PATCH (RUBBER OR WOVEN)

NO SILICONE TRANSFERS

UNRL SUBLIMATED COLLECTION

CUSTOM MADE-TO-ORDER SUBLIMATION ITEMS

- + 30 day turnaround**
- + Receive finished product - no additional decoration necessary**
- + 100+ templates available to customize**

SILKSERIES HOODIE II

- + EXTREMELY STRETCHY EXTERIOR
- + BRUSHED FLEECE INTERIOR
- + FUSED DYE: NEVER FADE PRINT
- + MICRO-MESH HOOD LINER
- + AVAILABLE IN A LITE 1 LAYER FABRIC



SIZES AVAILABLE:
YS-YL
XS-5XL



TEMPLATE 02



TEMPLATE 03



TEMPLATE 04



TEMPLATE 05



TEMPLATE 06



TEMPLATE 07



TEMPLATE 08



TEMPLATE 09



TEMPLATE 10

Dealers are entrusted with independently creating templates for all sublimated products. To gain access to our comprehensive design assets, kindly reach out to your dedicated account manager. Should any questions arise during the design process, we encourage you to reach out to your account manager, who will connect you with a member of our design team to provide assistance.

SPORT LONG SLEEVE

- + EXTREMELY STRETCHY EXTERIOR
- + FUSED DYE: NEVER FADE PRINT
- + FITTED WORKOUT LONG SLEEVE
- + PERFORMANCE MOISTURE WICKING FABRICS
- + COVER STITCHED SEAMS



SIZES AVAILABLE:
YS-YL
XS-5XL



Dealers are entrusted with independently creating templates for all sublimated products. To gain access to our comprehensive design assets, kindly reach out to your dedicated account manager. Should any questions arise during the design process, we encourage you to reach out to your account manager, who will connect you with a member of our design team to provide assistance.

SPORT SHORT SLEEVE

- + EXTREMELY STRETCHY EXTERIOR
- + FUSED DYE: NEVER FADE PRINT
- + FITTED WORKOUT SHORT SLEEVE
- + PERFORMANCE MOISTURE WICKING FABRICS
- + COVER STITCHED SEAMS



SIZES AVAILABLE:
YS-YL
XS-5XL

TEMPLATE 01



TEMPLATE 02



TEMPLATE 03



TEMPLATE 04



TEMPLATE 05



TEMPLATE 06



TEMPLATE 07



TEMPLATE 08



TEMPLATE 09



Dealers are entrusted with independently creating templates for all sublimated products. To gain access to our comprehensive design assets, kindly reach out to your dedicated account manager. Should any questions arise during the design process, we encourage you to reach out to your account manager, who will connect you with a member of our design team to provide assistance.

TRAINING SHORTS

- + PERFORMANCE TRAINING SHORTS
- + PREMIUM LIGHTWEIGHT MATERIALS
- + MICRO-PERFORATION FOR BREATHABILITY
- + INTERIOR POCKET
- + 8" IN-SEAM - ADULT



SIZES AVAILABLE:
YS-YL
XS-5XL

TEMPLATE 01



TEMPLATE 02



TEMPLATE 03



TEMPLATE 04



TEMPLATE 05



TEMPLATE 06



TEMPLATE 07



TEMPLATE 08



TEMPLATE 09



Dealers are entrusted with independently creating templates for all sublimated products. To gain access to our comprehensive design assets, kindly reach out to your dedicated account manager. Should any questions arise during the design process, we encourage you to reach out to your account manager, who will connect you with a member of our design team to provide assistance.

HOCKEY JERSEY

- + GAME-WEIGHT DURABLE PERFORMANCE MATERIALS
- + MID TO HEAVY WEIGHT: 4 WAY STRETCH
- + REINFORCED SHOULDER AND ELBOW PANELS
- + MICRO-MESH ARMPIT GUSSETS FOR BREATHABILITY
- + PRO STYLE NOTCHED COLLAR
- + SUBLIMATION PRINTED DESIGN

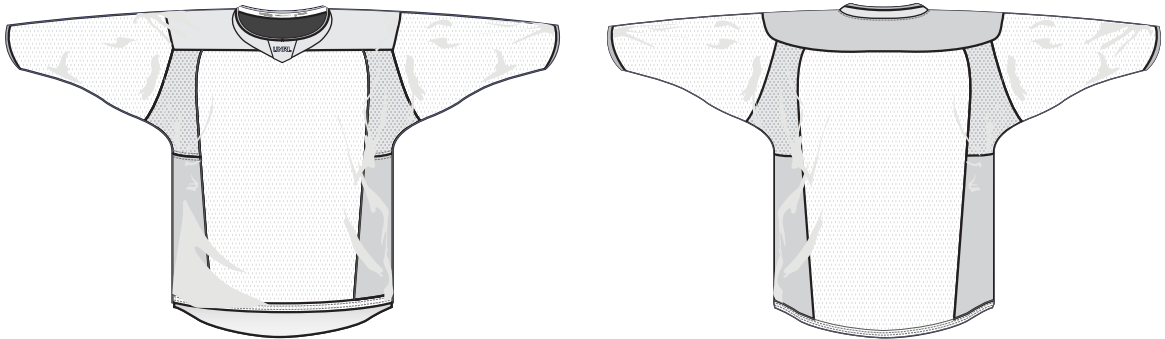


TEMPLATE 01

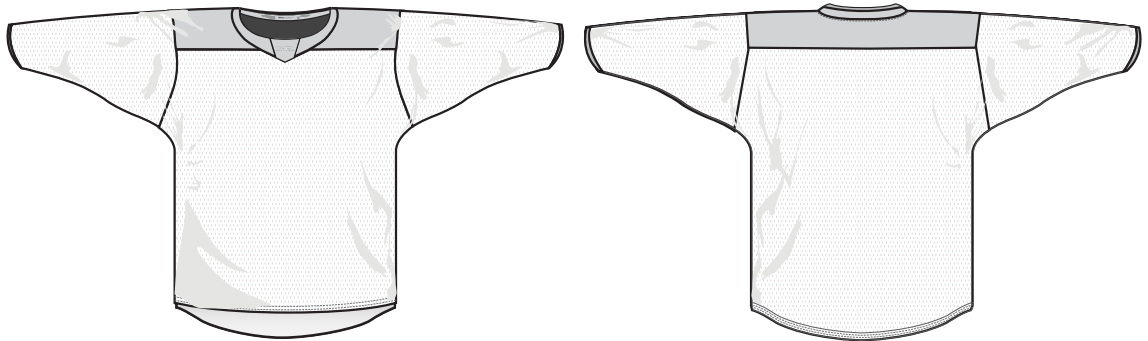
SIZES AVAILABLE:
YOUTH: YS, YM, YL/YXL
ADULT: S-2XL

STEP 1: SELECT YOUR STYLE

STYLE #1: BOX LACROSSE FRANCHISE JERSEY
11 PANELS | 4 FABRICS

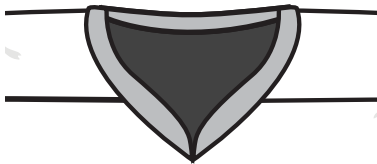


STYLE #2: BOX LACROSSE MAINSTREAM JERSEY
5 PANELS | 2 FABRICS



STEP 2: SELECT YOUR COLLAR

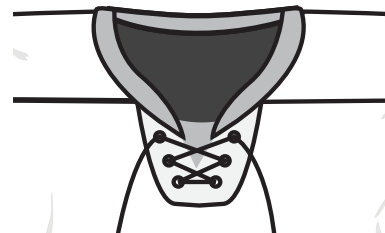
STANDARD V



BLADE



LACE UP



NOTCH



STEP 3: SELECT YOUR TEMPLATE

TEMPLATE 02



TEMPLATE 03



TEMPLATE 04



TEMPLATE 05



TEMPLATE 06



TEMPLATE 07



TEMPLATE 08



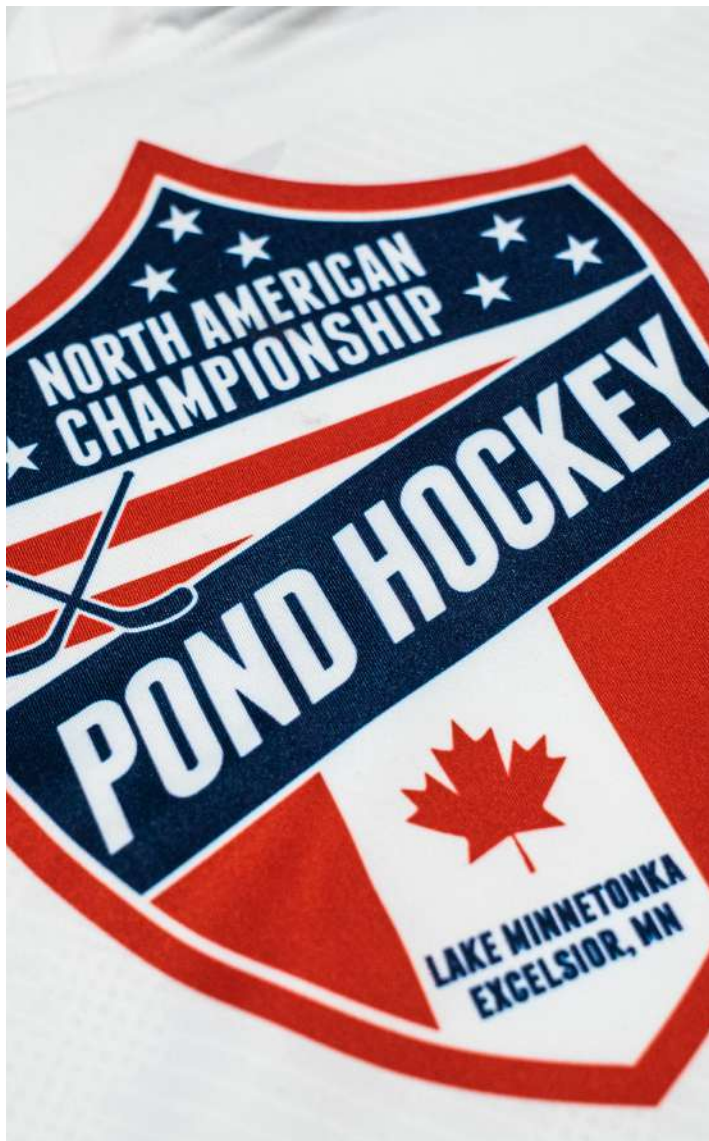
TEMPLATE 09



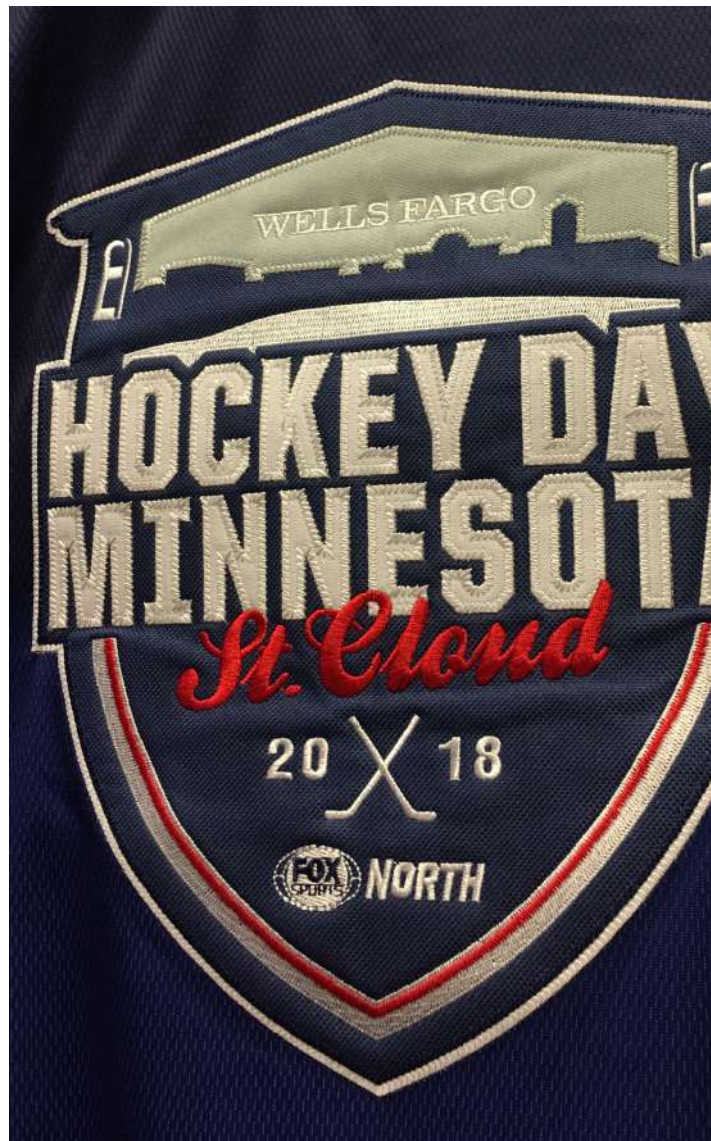
TEMPLATE 10



STEP 4: SELECT YOUR FINISHING STYLE



DYE SUBLIMATION

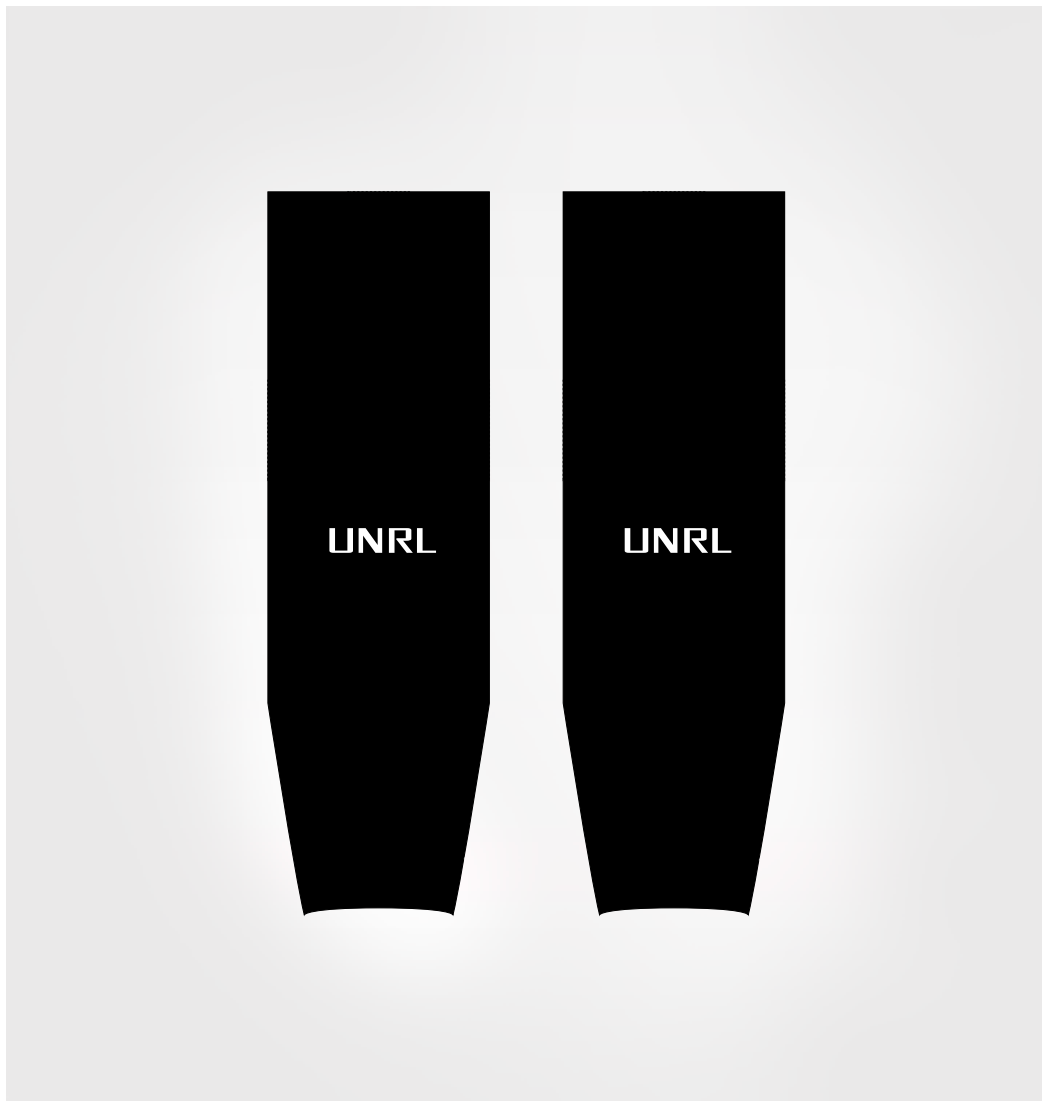


DYE SUBLIMATION
+ TWILL

Dealers are entrusted with independently creating templates for all sublimated products. To gain access to our comprehensive design assets, kindly reach out to your dedicated account manager. Should any questions arise during the design process, we encourage you to reach out to your account manager, who will connect you with a member of our design team to provide assistance.

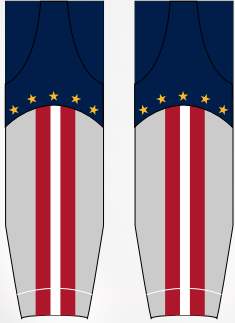
PREMIER HOCKEY SOCKS

- + GAME-WEIGHT DURABLE PERFORMANCE MATERIALS
- + MIDWEIGHT: 4 WAY STRETCH
- + ELASTIC ANKLES
- + 2 VELCRO TABS TO KEEP SOCKS ATTACHED TO SHORTS

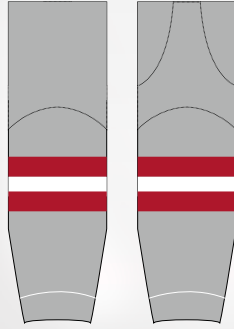


SIZES AVAILABLE:
22", 24", 26", 30"

TEMPLATE 01



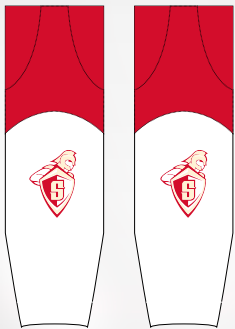
TEMPLATE 02



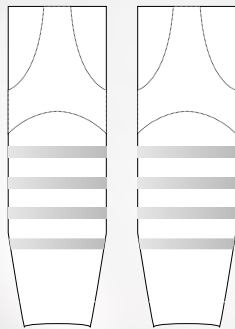
TEMPLATE 03



TEMPLATE 04



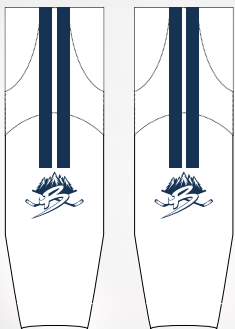
TEMPLATE 05



TEMPLATE 06



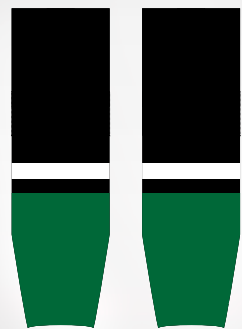
TEMPLATE 07



TEMPLATE 08



TEMPLATE 09



Dealers are entrusted with independently creating templates for all sublimated products. To gain access to our comprehensive design assets, kindly reach out to your dedicated account manager. Should any questions arise during the design process, we encourage you to reach out to your account manager, who will connect you with a member of our design team to provide assistance.

REVERSIBLE LACROSSE PINNIE

- + 2-IN-1 REVERSIBLE JERSEY
- + 2-PLY CONSTRUCTION
- + PREMIUM LIGHTWEIGHT DURABLE MATERIALS
- + MICRO-PERFORATION FOR BREATHABILITY
- + EXTREMELY DURABLE AND ANTI-SNAGGING



SIZES AVAILABLE:
YOUTH: YS/YM, YL, YXL
ADULT: XS, S/M, L/XL, 2XL, 3XL

TEMPLATE 01



TEMPLATE 02



TEMPLATE 03



TEMPLATE 04



TEMPLATE 05



TEMPLATE 06



TEMPLATE 07



TEMPLATE 08



TEMPLATE 09



Dealers are entrusted with independently creating templates for all sublimated products. To gain access to our comprehensive design assets, kindly reach out to your dedicated account manager. Should any questions arise during the design process, we encourage you to reach out to your account manager, who will connect you with a member of our design team to provide assistance.

PRO-FIT SHORT SLEEVE LACROSSE JERSEY

- + NOT-SO-BAGGY FIT - PLL STYLE CUT
- + DURABLE PRO-GRADE MATERIAL
- + MESH BACK PANEL AND ARMPIT PANELS
- + NOTCHED V-NECK COLLAR
- + RAGLAN CUT SLEEVES



SIZES AVAILABLE:
YOUTH: YS/YM, YL, YXL
ADULT: XS, S/M, L/XL, 2XL, 3XL

TEMPLATE 01



TEMPLATE 02



TEMPLATE 03



TEMPLATE 04



TEMPLATE 05



TEMPLATE 06



TEMPLATE 07



TEMPLATE 08



TEMPLATE 09



Dealers are entrusted with independently creating templates for all sublimated products. To gain access to our comprehensive design assets, kindly reach out to your dedicated account manager. Should any questions arise during the design process, we encourage you to reach out to your account manager, who will connect you with a member of our design team to provide assistance.

BOX LACROSSE JERSEY

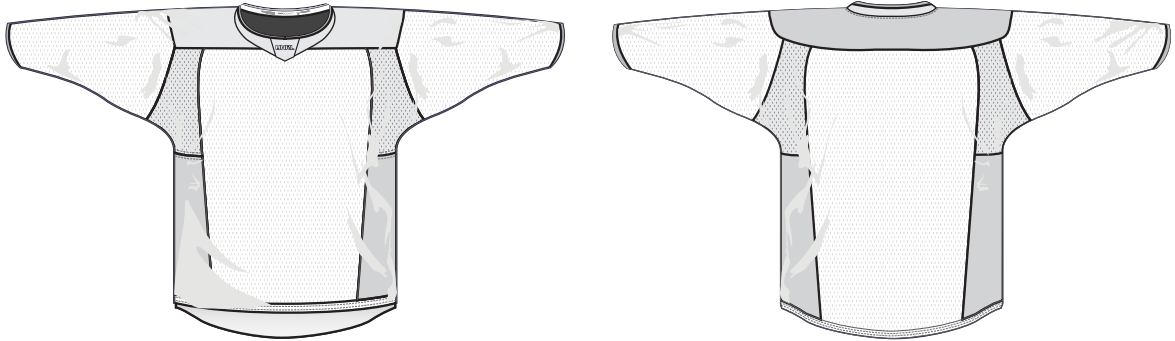
- + EXTREMELY STRETCHY EXTERIOR
- + FUSED DYE: NEVER FADE PRINT
- + FITTED WORKOUT SHIRT
- + PERFORMANCE MOISTURE WICKING FABRICS
- + COVER STITCHED SEAMS



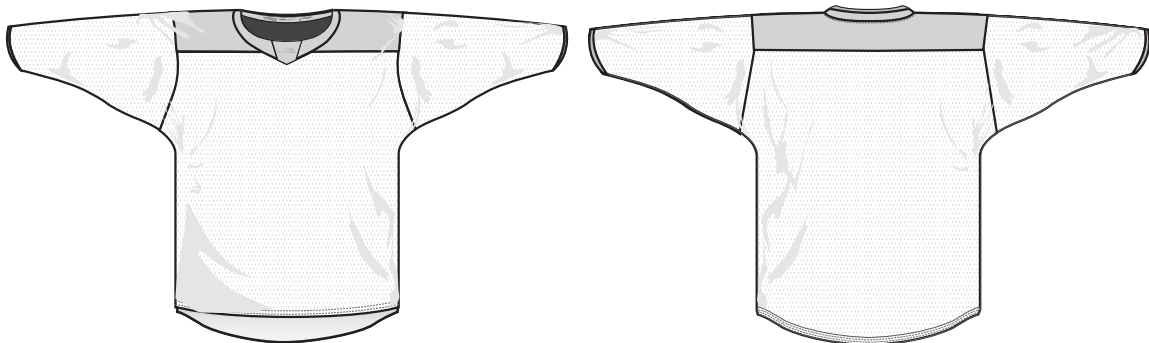
SIZES AVAILABLE:
YOUTH: YS, YM, YL/YXL
ADULT: S-2XL

STEP 1: SELECT YOUR STYLE

STYLE #1: BOX LACROSSE FRANCHISE JERSEY
11 PANELS | 4 FABRICS

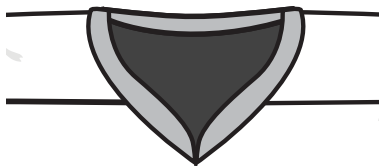


STYLE #2: BOX LACROSSE MAINSTREAM JERSEY
5 PANELS | 2 FABRICS

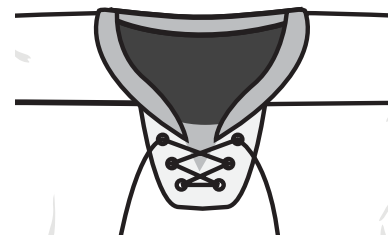


STEP 2: SELECT YOUR COLLAR

STANDARD V



LACE UP



BLADE



NOTCH



STEP 3: SELECT YOUR TEMPLATE

TEMPLATE 02



TEMPLATE 03



TEMPLATE 04



TEMPLATE 05



TEMPLATE 06



TEMPLATE 07



LADIES REVERSIBLE LACROSSE PINNIE

- + 2-IN-1 REVERSIBLE JERSEY
- + 2-PLY CONSTRUCTION
- + PREMIUM LIGHTWEIGHT DURABLE MATERIALS
- + MICRO-PERFORATION FOR BREATHABILITY
- + EXTREMELY DURABLE AND ANTI-SNAGGING



SIZES AVAILABLE:
YOUTH: YS/YM, YL, YXL
ADULT: XS, S/M, L/XL, 2XL, 3XL

TEMPLATE 01



TEMPLATE 02



TEMPLATE 03



TEMPLATE 04



TEMPLATE 05



TEMPLATE 06



TEMPLATE 07



TEMPLATE 08



TEMPLATE 09



Dealers are entrusted with independently creating templates for all sublimated products. To gain access to our comprehensive design assets, kindly reach out to your dedicated account manager. Should any questions arise during the design process, we encourage you to reach out to your account manager, who will connect you with a member of our design team to provide assistance.

LADIES LACROSSE SKORT

- + PERFORMANCE LACROSSE SKORT
- + PREMIUM LIGHTWEIGHT MATERIALS
- + MICRO-PERFORATION FOR BREATHABILITY
- + CUSTOM SPANDEX LINER
- + EXTREMELY DURABLE AND ANTI-SNAGGING



SIZES AVAILABLE:
YOUTH: YS-YL
ADULT: XS-3XL

TEMPLATE 01



TEMPLATE 02



TEMPLATE 03



TEMPLATE 04



TEMPLATE 05



TEMPLATE 06



TEMPLATE 07



TEMPLATE 08



TEMPLATE 09



Dealers are entrusted with independently creating templates for all sublimated products. To gain access to our comprehensive design assets, kindly reach out to your dedicated account manager. Should any questions arise during the design process, we encourage you to reach out to your account manager, who will connect you with a member of our design team to provide assistance.

BASEBALL JERSEY

- + FULL BUTTON PLACKET
- + FUSED DYE: NEVER FADE PRINT
- + PERFORMANCE MOISTURE WICKING FABRICS
- + COVER STITCHED SEAMS



SIZES AVAILABLE:
YOUTH: YS-YL
ADULT: XS-4XL

TEMPLATE 01



TEMPLATE 02



TEMPLATE 03



TEMPLATE 04



TEMPLATE 05



TEMPLATE 06



TEMPLATE 07



TEMPLATE 08

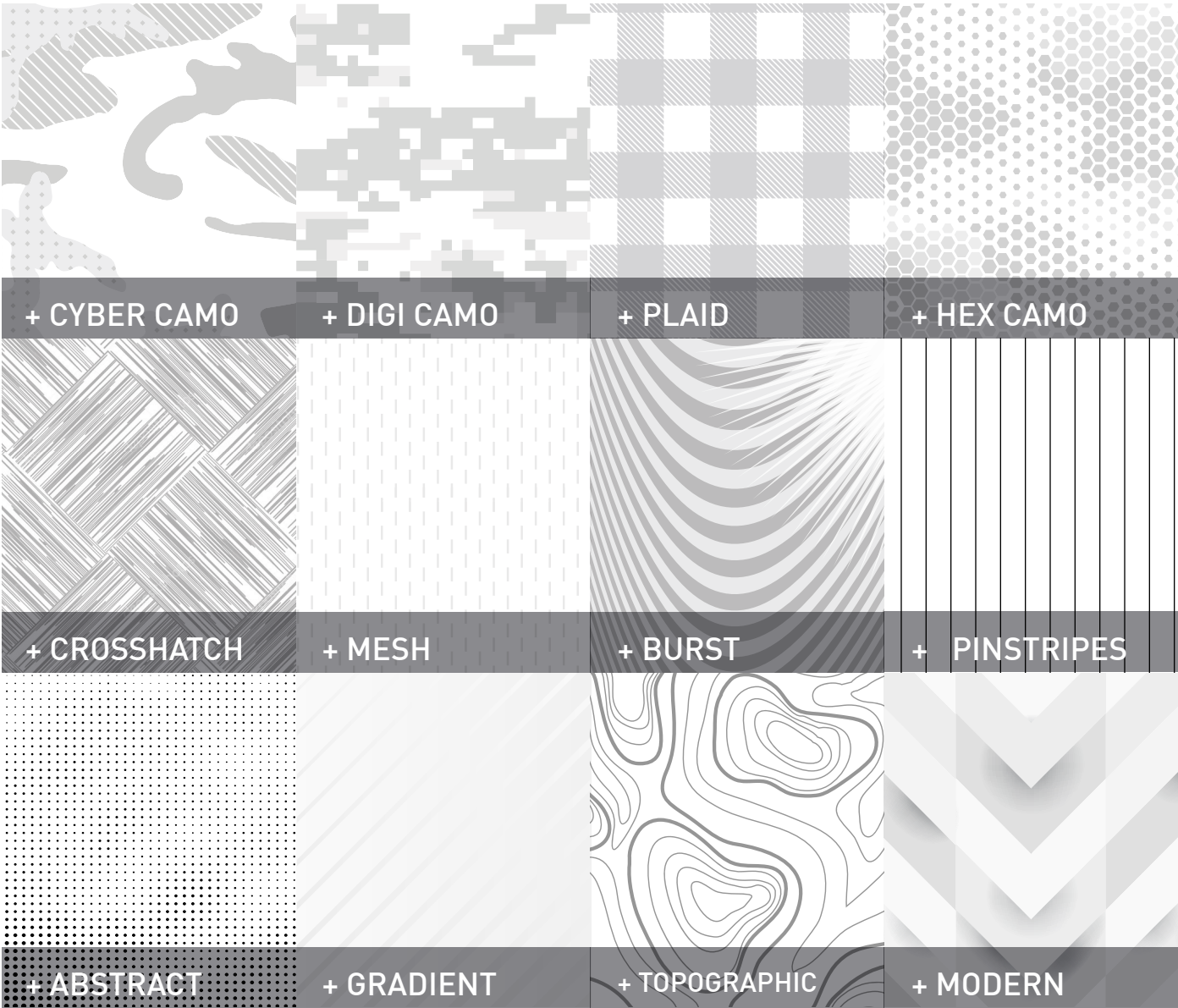


TEMPLATE 09



Dealers are entrusted with independently creating templates for all sublimated products. To gain access to our comprehensive design assets, kindly reach out to your dedicated account manager. Should any questions arise during the design process, we encourage you to reach out to your account manager, who will connect you with a member of our design team to provide assistance.

SUBLIMATION OVERLAYS



Combine one of our sublimation patterns to your sublimation garments. Customers are limited to one pattern per garment. You are not limited to these overlay patterns, please provide a vector (.eps or .ai) and submit for approval to your account manager.



UNRL[®]

**WWW.UNRL.CO
ST. PAUL, MINNESOTA**

**SALES MANAGER | DANI MCLAUGHLIN
DANI@UNRLCO.COM
612.804.7350**