

NCSTU8-ZGSKB334 - 7 OZ. SCENTED HAND Poured CANDLE IN GIFT BOX

Print File // Actual size

Please Note: All colors of ingredients and item names can be changed to match the colors of the imprints as you desire, but will be black or white will be standard. Black ingredients do not show up well against darker colored background, we recommend that you change them to white. The ingredients must be readable and legible due to FDA regulation and should be a minimum of 3.5pts in size. If you have a background pattern or picture, please take this into consideration. **Transparencies do not print!** If your art includes a transparency you will need to print in CMYK colors, and the art will need to be converted to raster in order for it to print. If you are printing white on a clear or metallic label it must be vector, unless you can submit the raster white in 1% Yellow in CMYK. We can only match colors from the Pantone Solid Book. Colors from the PMS Metallic and Neon Books we cannot match, they print muted and similar to the colors you see on the proof. Recommendations 1- include a white or different color box underneath the ingredients entirely. 2- add a white or black outline (it must be thick enough to print well). 3 - Change the color of them to white or black, or match a darker or lighter color from your artwork in order to make them visible. Note, we will make one of the above changes on your proof should it not be done when artwork is submitted. A small drop shadow does not print well, we will not use this option when it is provided.

Bleed Area (background color/pattern): Candle Labels 2.51" W x 2.51" H/ Box Label 2.2324" W x 3.2246" H

Label Size/Cutline: Candle Labels 2.4" W x 2.4" H/ Box Label 1.9844" W x 2.9766" H

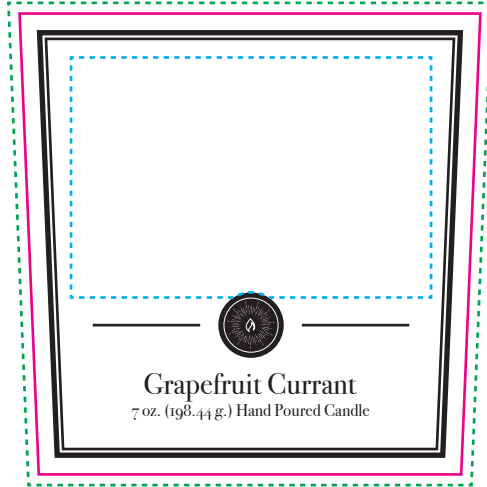
Imprint Area: Designed Label 1.875" W x 1.25" H/ Blank Label 1.875" W x 1.875" H/ Box Label 1.7363" W x 2.7285" H

- Scents:
- Grapefruit Currant
 - Cranberry Spice
 - Tropical Melon
 - Midnight Woods
 - Lemon Verbena
 - Sugar Cookie
 - Berry Spice
 - Revive
 - Lava
 - Cinnamon Sugar
 - Frosted Pinecone
 - Plum Brandy
 - Pumpkin Spice

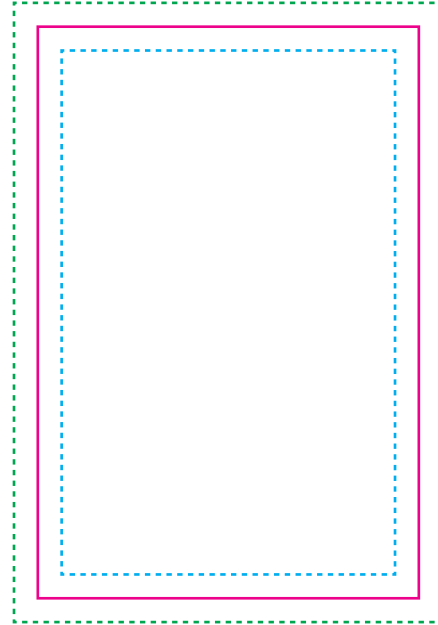
Minimum Art Requirements

MINIMUM LINE SIZE	
Digital Print	.25 pt
MIN LINE WIDTH	.25 pt
MIN LINE GAP	

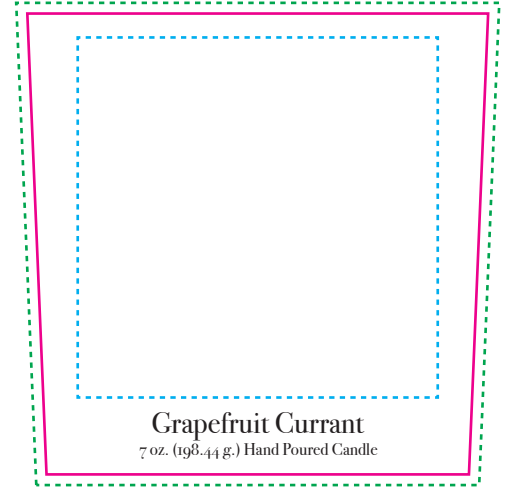
MINIMUM TEXT SIZE	
1/16" (0.0625")	8.75pts (still small but legible)
3/32" (0.09375")	13.125pts (smallest recommended)
7/32" (0.21875")	2.9pts legible, hard to see depending on the font
1/4" (0.25")	2.5pts barely legible
1/2" (0.5")	2.0pts not legible
5/8" (0.625")	1.5pts way too small



STOCK LABEL W/ BORDER



BOX LABEL



STOCK LABEL NO BORDER



SCREEN PRINTED "FULL WRAP" LABEL USING PAD PRINT INK CHART #9

Screen Printed on Surface
Full Wrap Imprint Area: 8.25" W x 3" H (no label)

NOTE: Product Name & Weight Must be Inside Imprint Area



Minimum Art Requirements

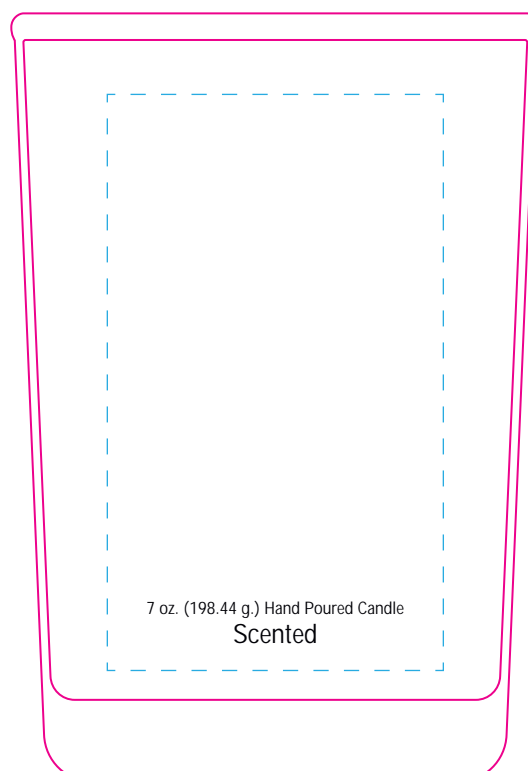
MINIMUM LINE SIZE	
Screen Print Lower Quality Size	1.15pt
MIN LINE WIDTH	1.75 pt
MIN LINE GAP	

MINIMUM TEXT SIZE	
1/8"	RECOMMENDED
1/16"	LEGIBLE W/ FILL-IN
1/32"	NOT LEGIBLE

PAD PRINTED

Pad Printed on Surface
Pad Print Imprint Area: 1.75 w x 3" h (no label)

NOTE: Product Name & Weight Must be Inside Imprint Area



Minimum Art Requirements

MINIMUM LINE SIZE	
Pad Print Good Quality	.25 pt
MIN LINE WIDTH	.75 pt
MIN LINE GAP	

MINIMUM TEXT SIZE	
1/16" (0.0625")	8.75pts (still small but legible)
3/32" (0.09375")	13.125pts (smallest recommended)
7/32" (0.21875")	2.9pts legible, hard to see depending on the font
1/4" (0.25")	2.5pts barely legible
1/2" (0.5")	2.0pts not legible
5/8" (0.625")	1.5pts way too small

*Our templates may and will change at any time. The proof mockup received after order is placed with the art showing on the item is an approximation and is not exactly to scale. See art at 100% scale."