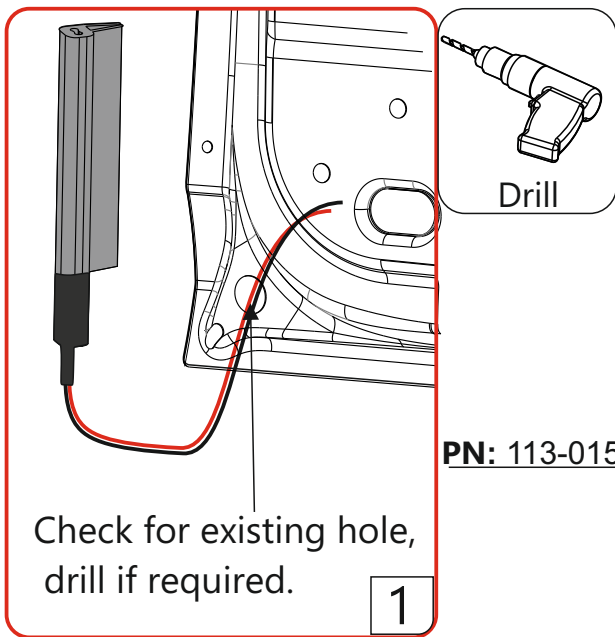
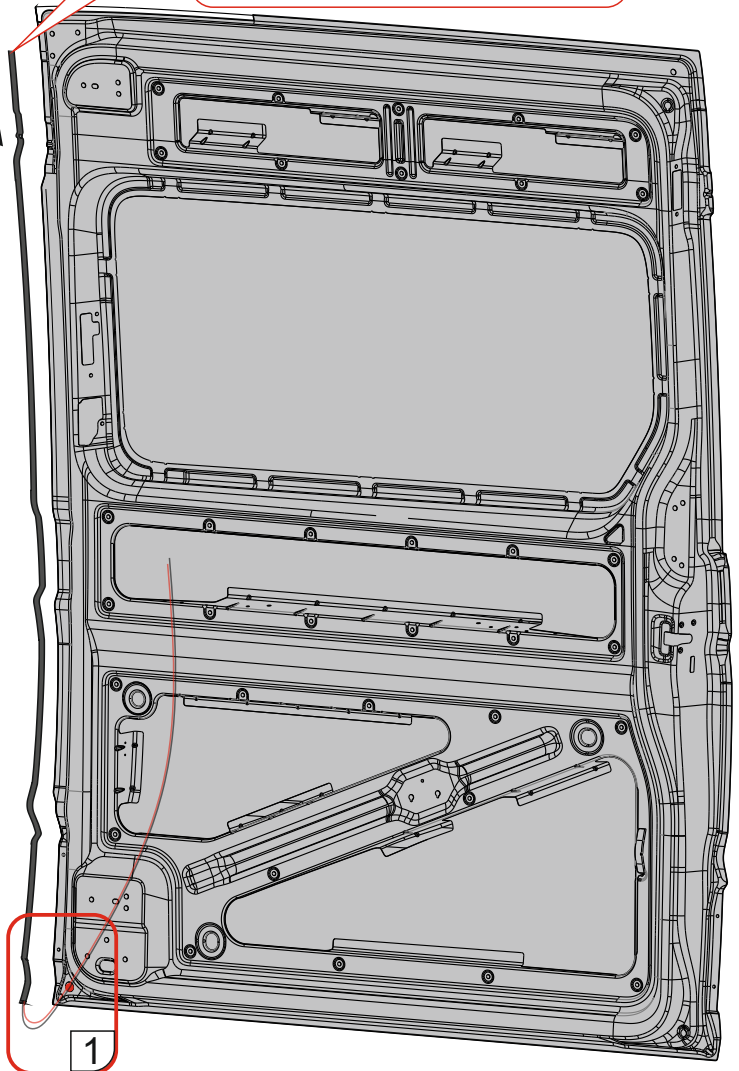
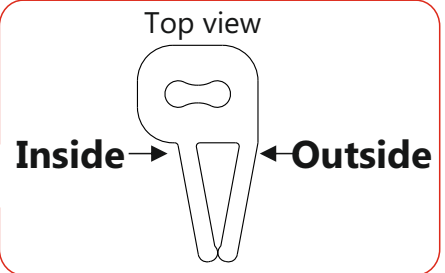
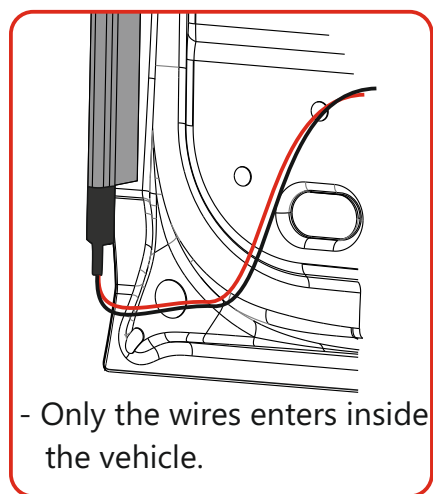
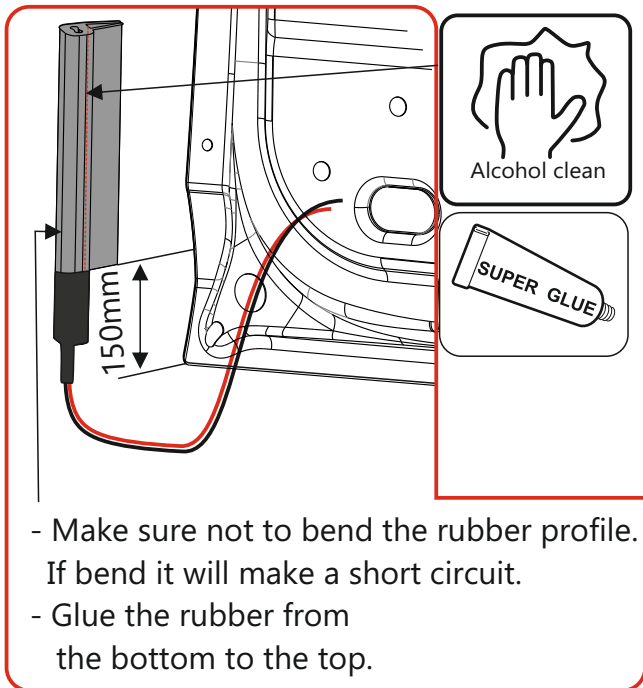
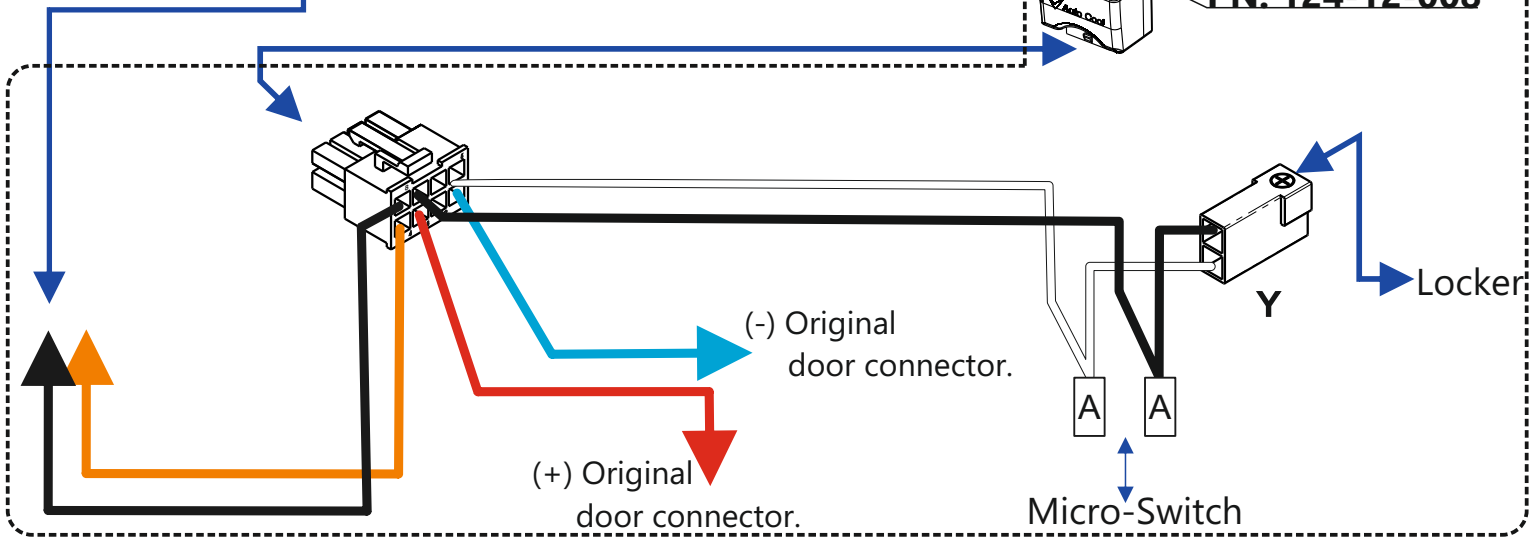
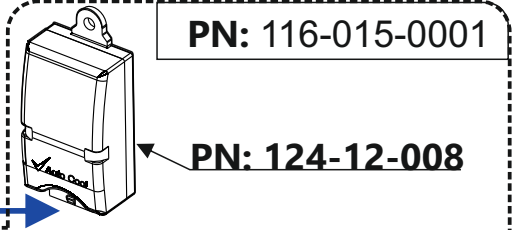
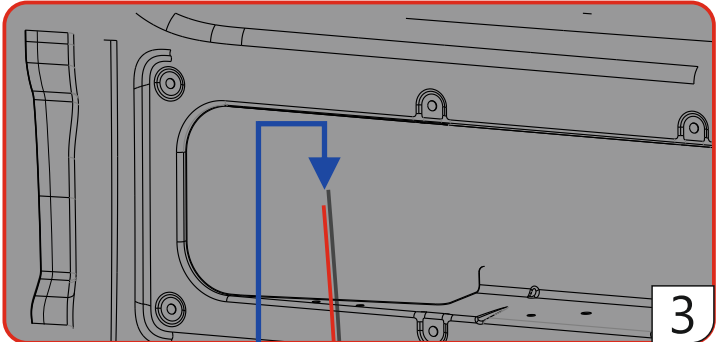
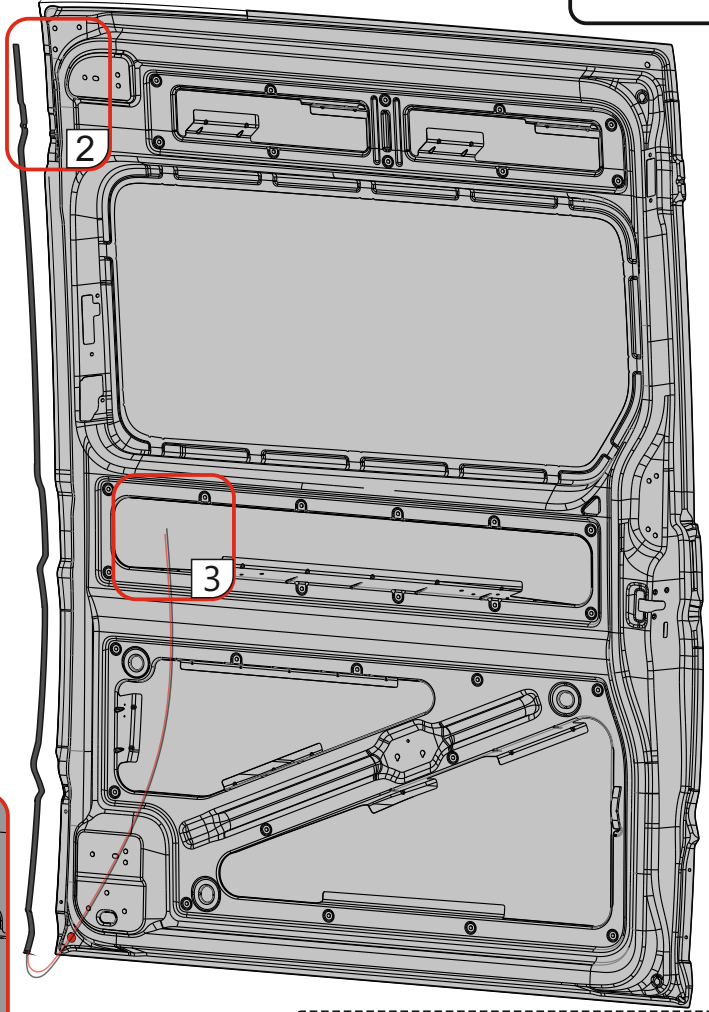
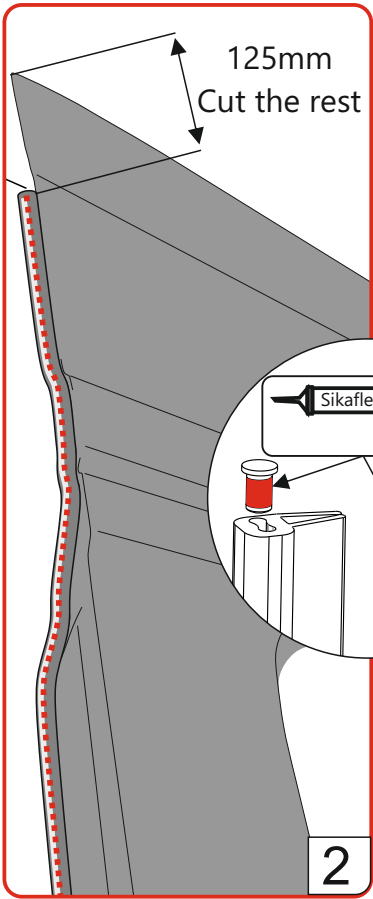
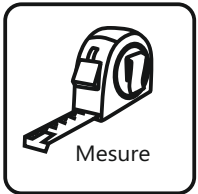


**Critical!**

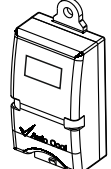


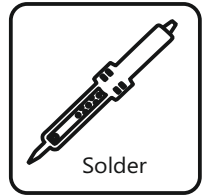
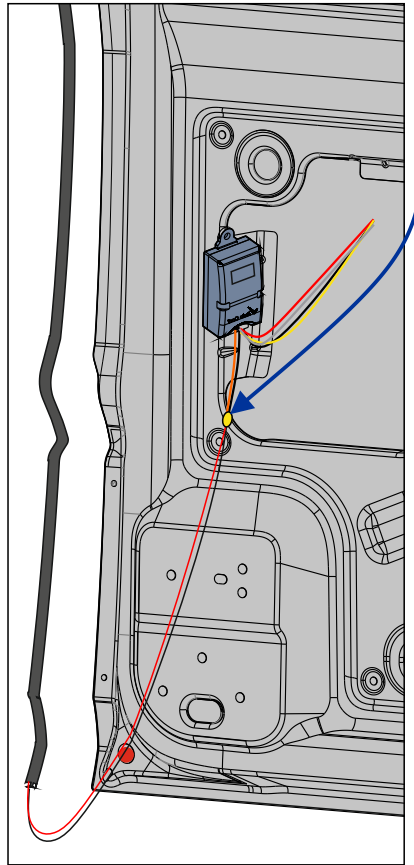
PN: 113-015-1201





**ASD controller must be installed in vertical position (connectors down).**





## **Remote control unit -**

Pairing new transmitter (remote control / key) with a receiver:

1. Make sure the receiver is connected to the harness (power source).
2. Reset the system - press and hold the programming button on the receiver, until the LED (on the receiver) is constantly on - and release.
3. Transmitter learning - press and hold the transmitter lock buttons until the LED on the receiver blinks - and release.
4. Repeat for all transmitter.
5. For smart transmitter \ door transmitter:
  - a. Connect all wires to the smart transmitter and B-pillar wiring.
  - b. Close the door for 10 seconds (capacitors in the smart transmitter will charge).
  - c. Transmitter learning - press the electrical safety rubber shortly, and make sure the LED on the receiver blinks.
5. Check operation of the transmitter.

Electrical rubber

