

V363 *Ford* TRANSIT



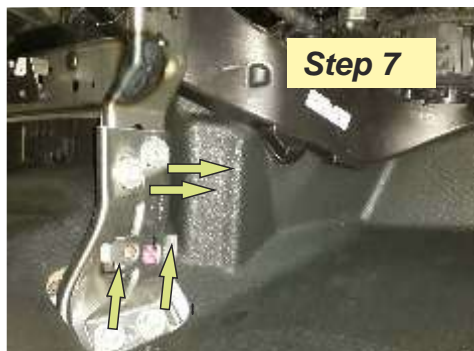
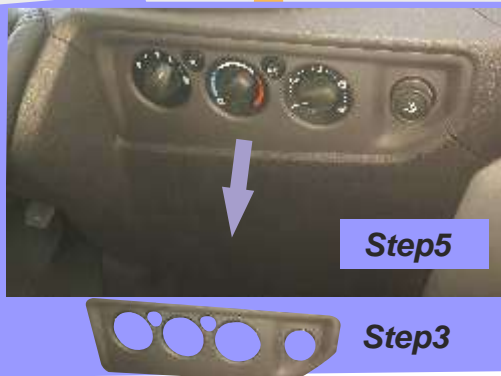
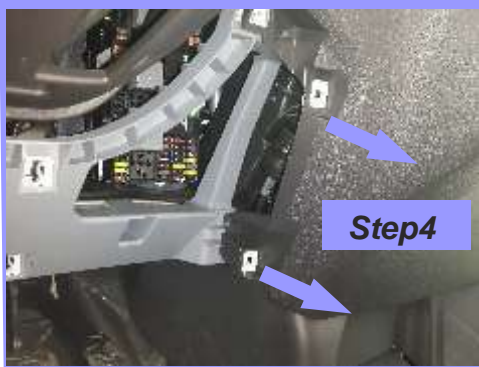
Automatic Axial Door

PN: 014-3630

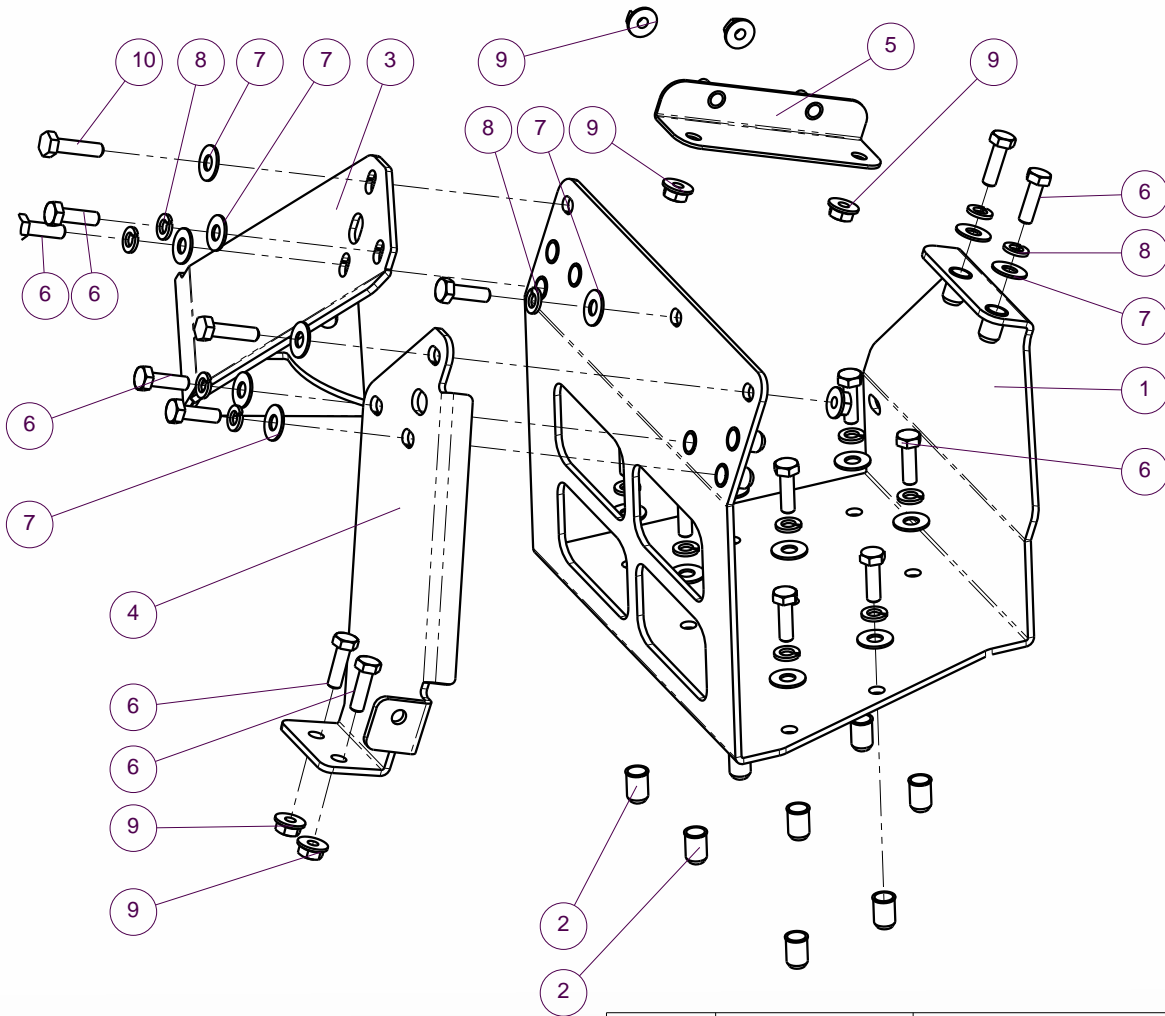


Attention!

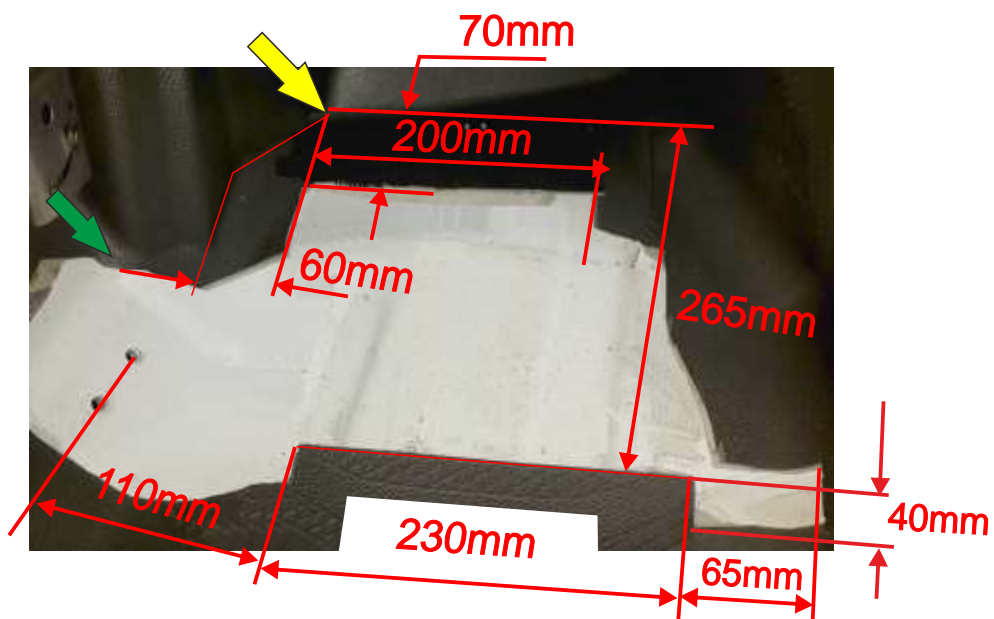
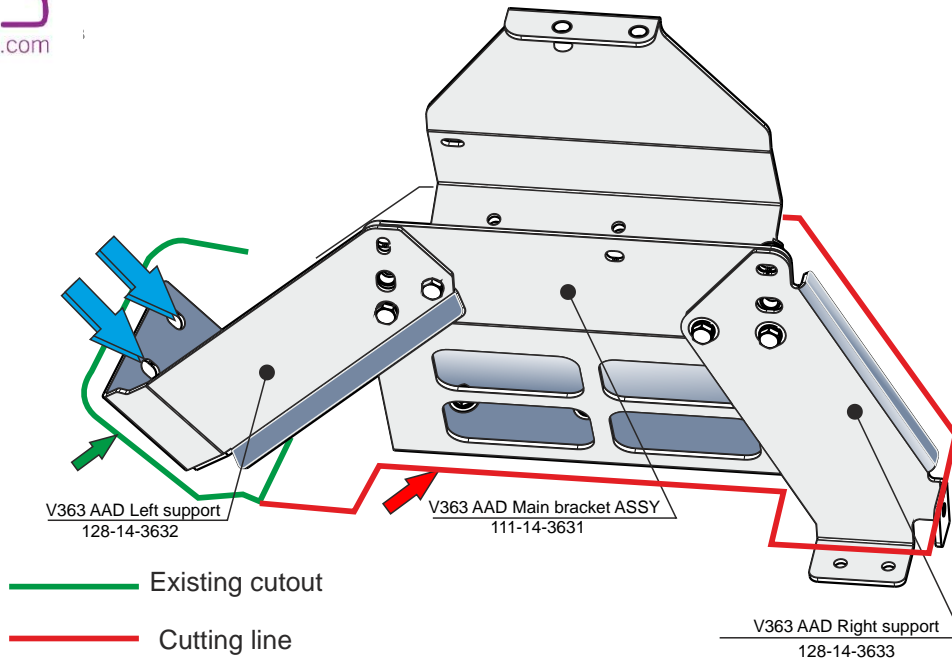
1. While activating the system to open/close, do not force **it** to the opposite direction of its motion.
2. Do not connect at any time the "Gear Motor" directly to the battery!!! It must be connected through the supplied electric system and control box.
Operating not as indicated, may break the gear motor, thus not covered by our warranty.



V363 AAD Gear Motor
Supports kit
160-14-3631



ITEM NO.	PART NUMBER	DESCRIPTION	QTY.
1	111-14-3631	V363 AAD Main bracket ASSY	1
2	603-02-006	Rivet nut M6	8
3	128-14-3632	V363 AAD Left support	1
4	128-14-3633	V363 AAD Right support	1
5	111-14-3632	Support ASSY	1
6	632-06-020	Hex bolt M6x20 DIN933, 8.8	17
7	600-12-080	Flat washer M6,thin DIN735	17
8	600-04-052	Spring Washer 6	15
9	601-06-006	Hex flange nut M6 DIN 6923	7
10	632-06-025	Hex cap screw M6x25 DIN933 8.8	2



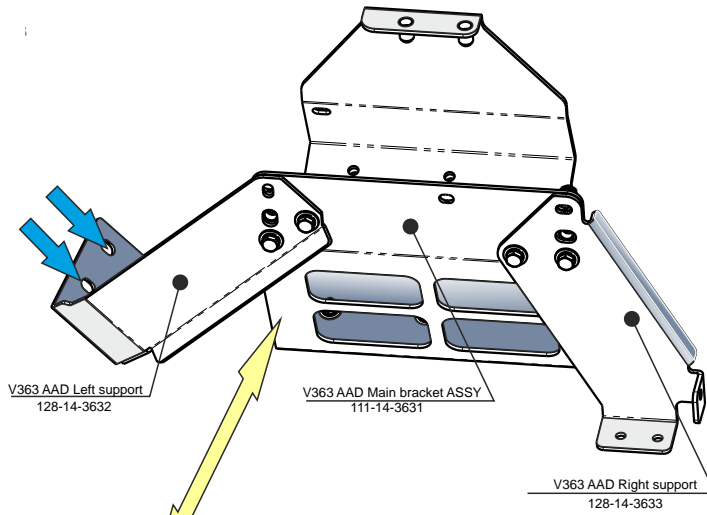


Figure 1



Figure 2

Attach the Gear-motor supports to the floor using original threaded holes A for positioning. Drill 6.5mm diameter holes. See Figure 1,2

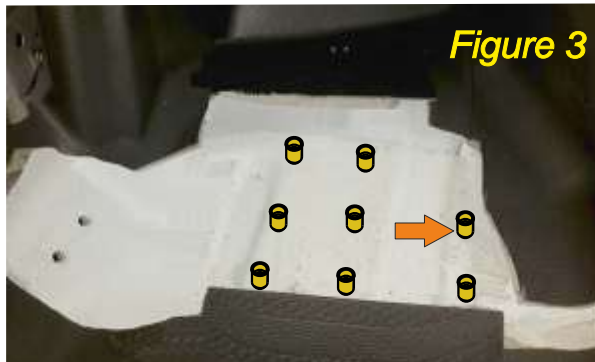


Figure 3

Drill 6 holes 9.5mm and install the threaded inserts (QTY. 6) (See figure)

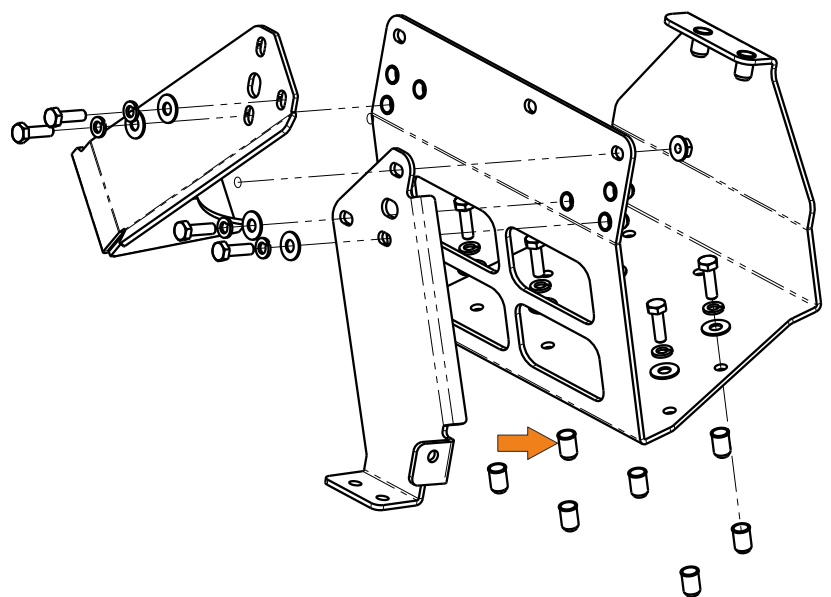
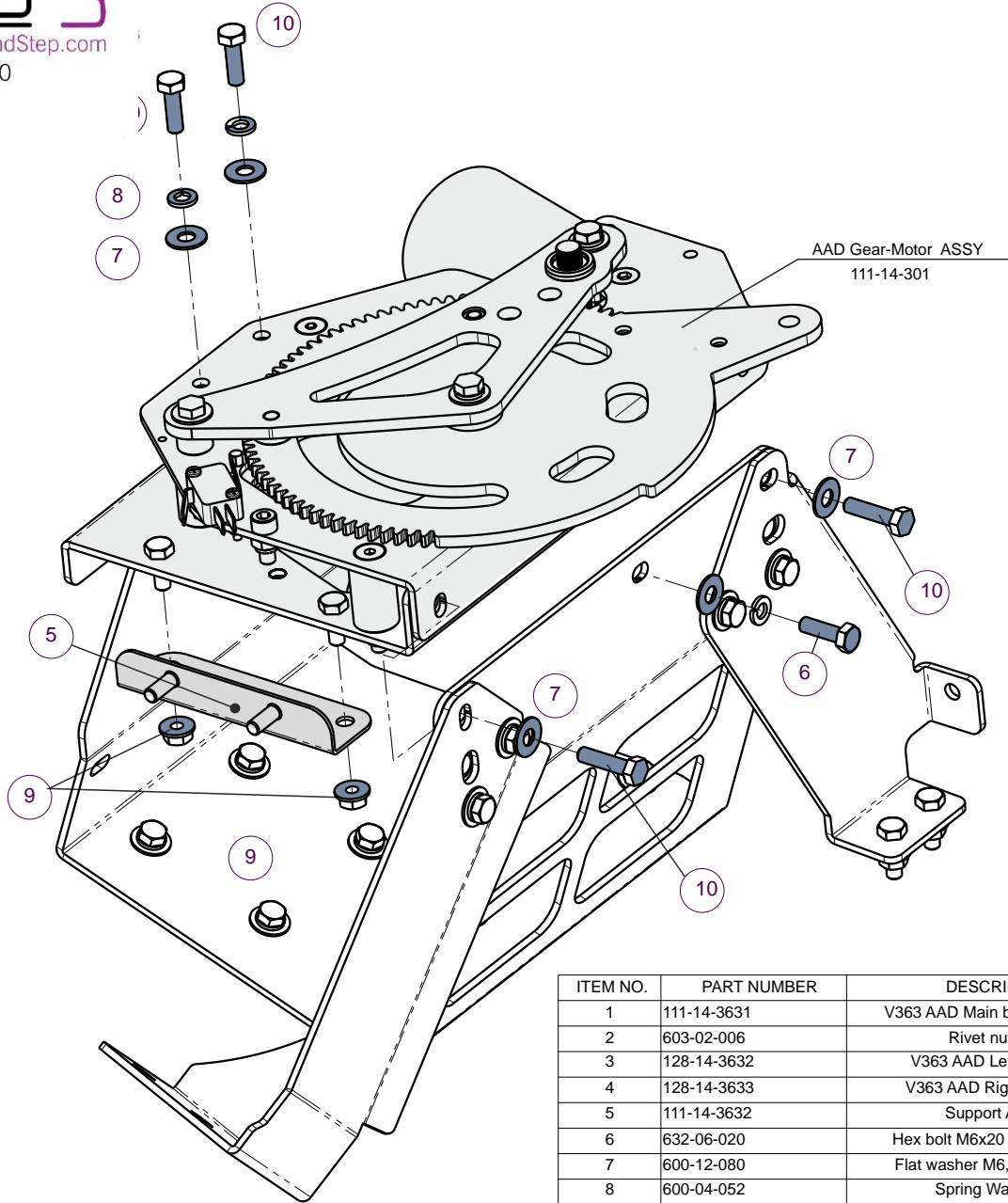


Figure 4



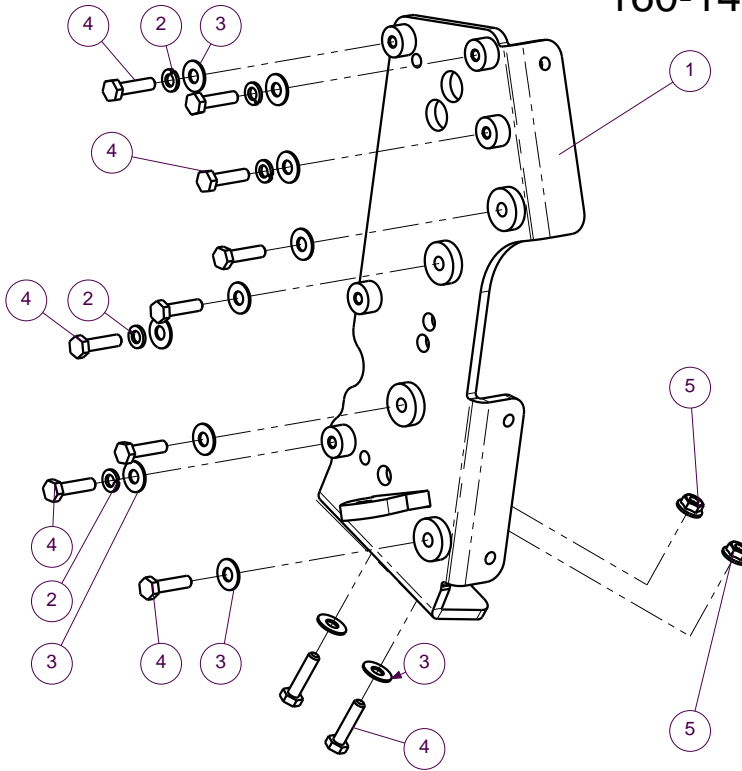
ITEM NO.	PART NUMBER	DESCRIPTION	QTY.
1	111-14-3631	V363 AAD Main bracket ASSY	1
2	603-02-006	Rivet nut M6	8
3	128-14-3632	V363 AAD Left support	1
4	128-14-3633	V363 AAD Right support	1
5	111-14-3632	Support ASSY	1
6	632-06-020	Hex bolt M6x20 DIN933, 8.8	17
7	600-12-080	Flat washer M6, thin DIN735	17
8	600-04-052	Spring Washer 6	15
9	601-06-006	Hex flange nut M6 DIN 6923	7
10	632-06-025	Hex cap screw M6x25 DIN933 8.8	2



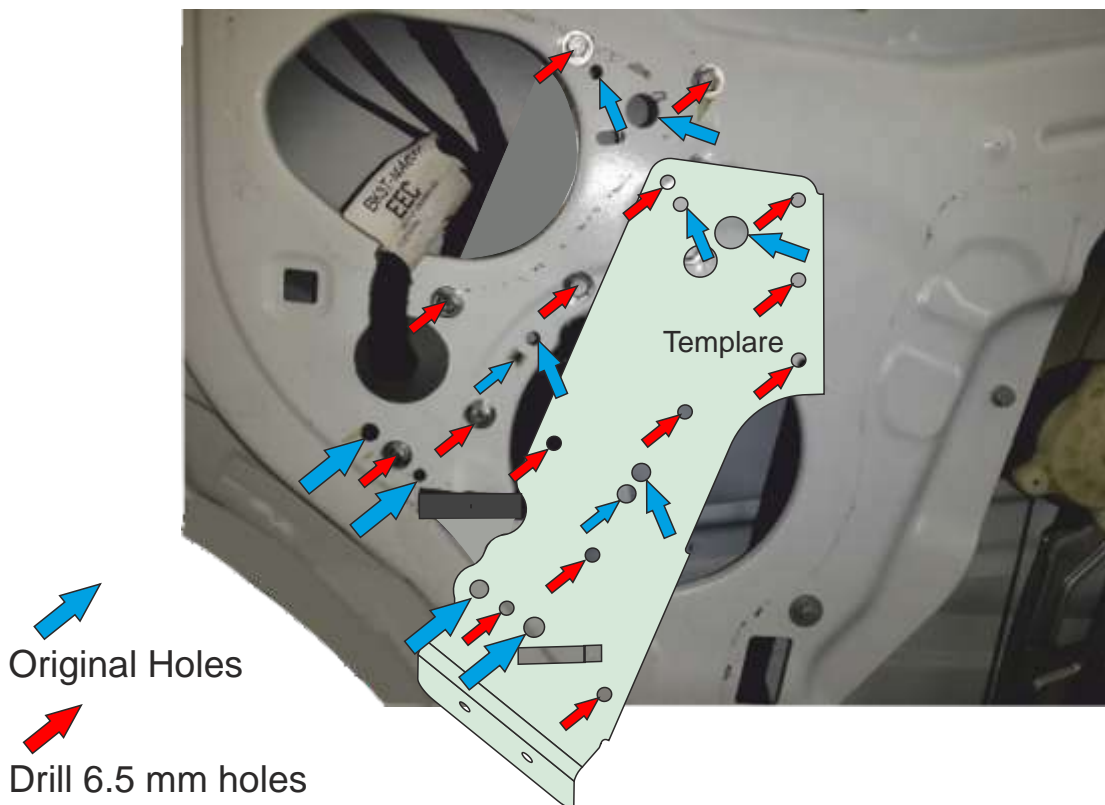


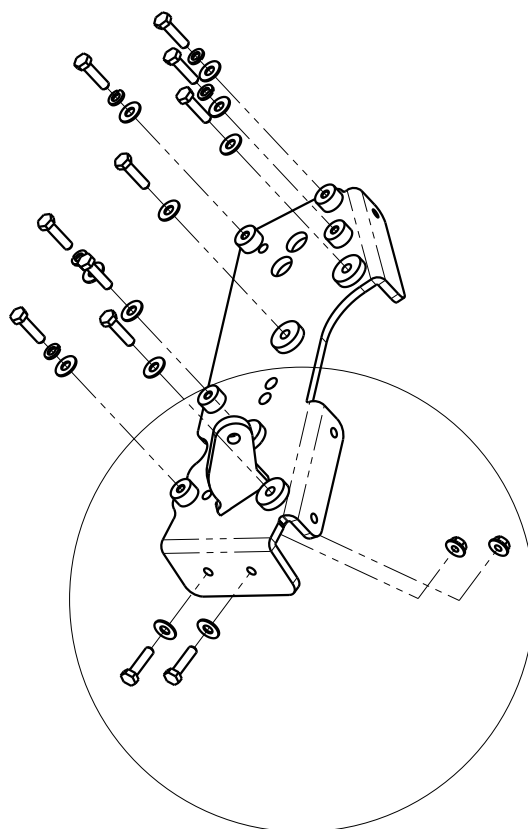
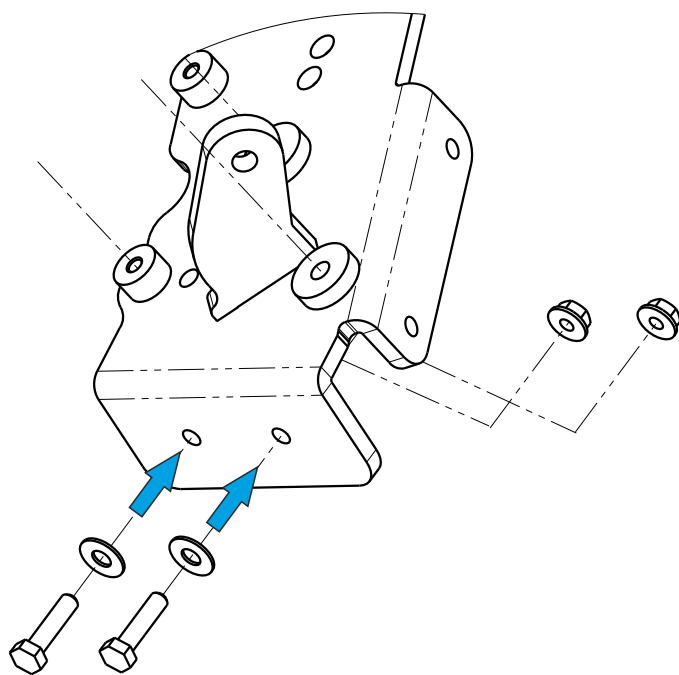
May need closed (re-adjustment)

V363 AAD Door's Bracket Kit
160-14-3630

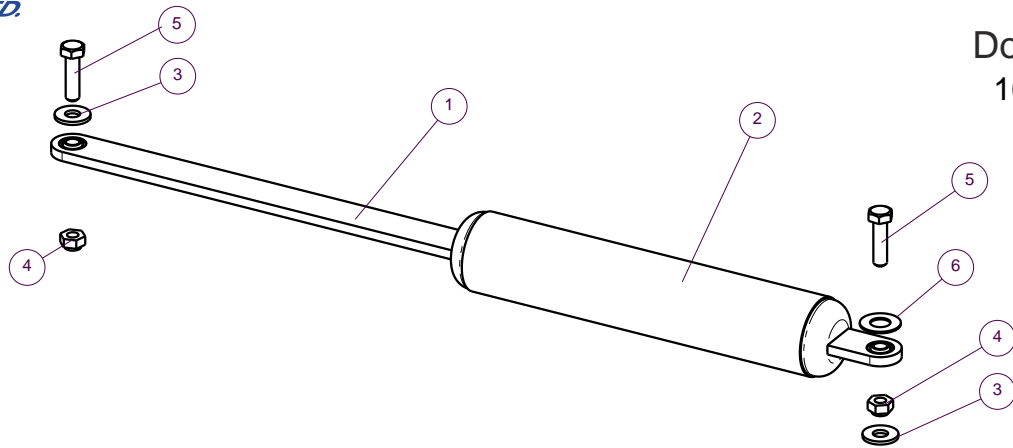


ITEM NO.	PART NUMBER	DESCRIPTION	QTY.
1	111-14-3630	V363 AAD Door's bracket ASSY	1
2	600-04-052	Spring Washer 6	5
3	600-12-080	Flat washer M6,thin DIN735	11
4	632-06-025	Hex cap screw M6x25 DIN933 8.8	11
5	601-06-006	Hex flange nut M6 DIN 6923	6

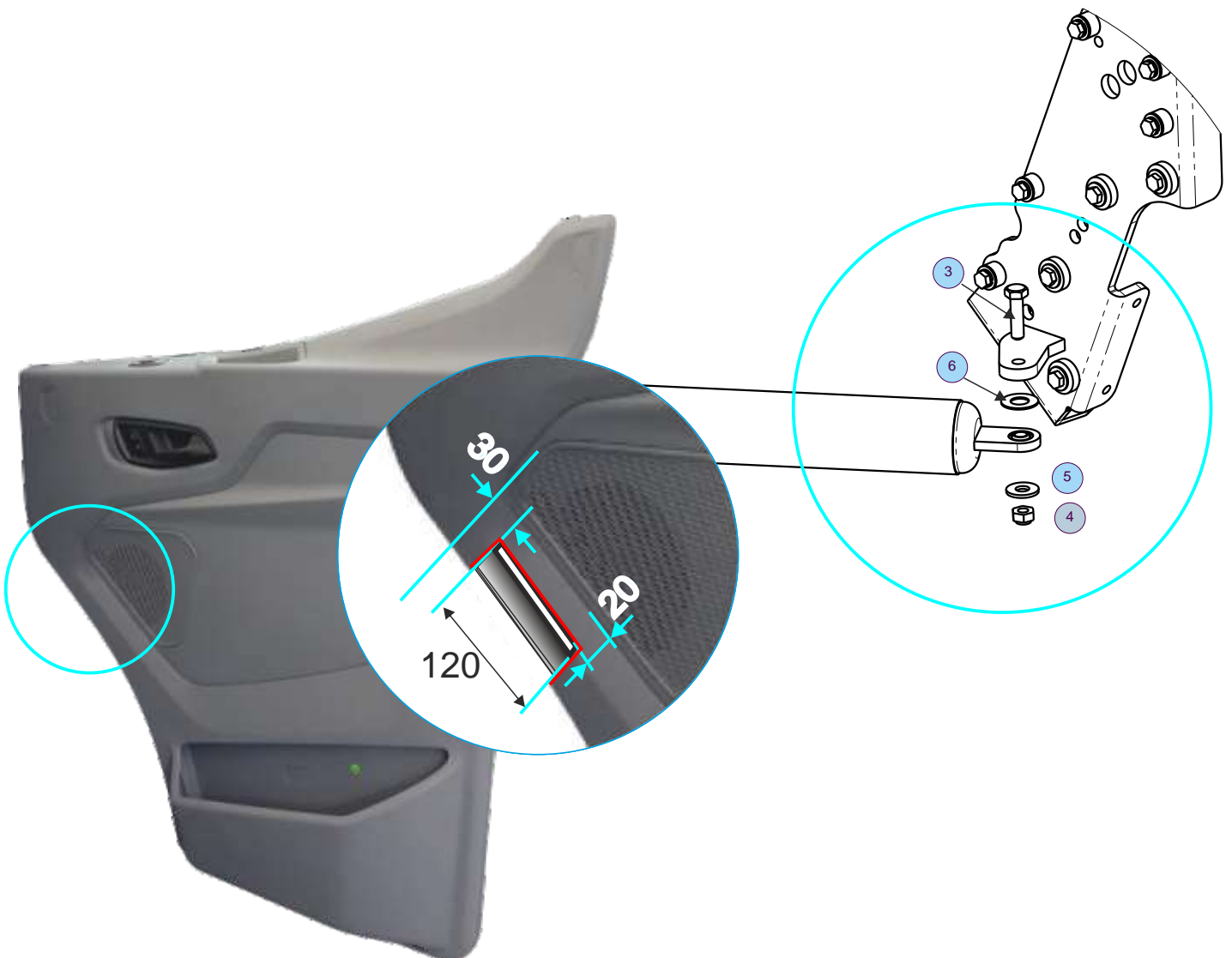


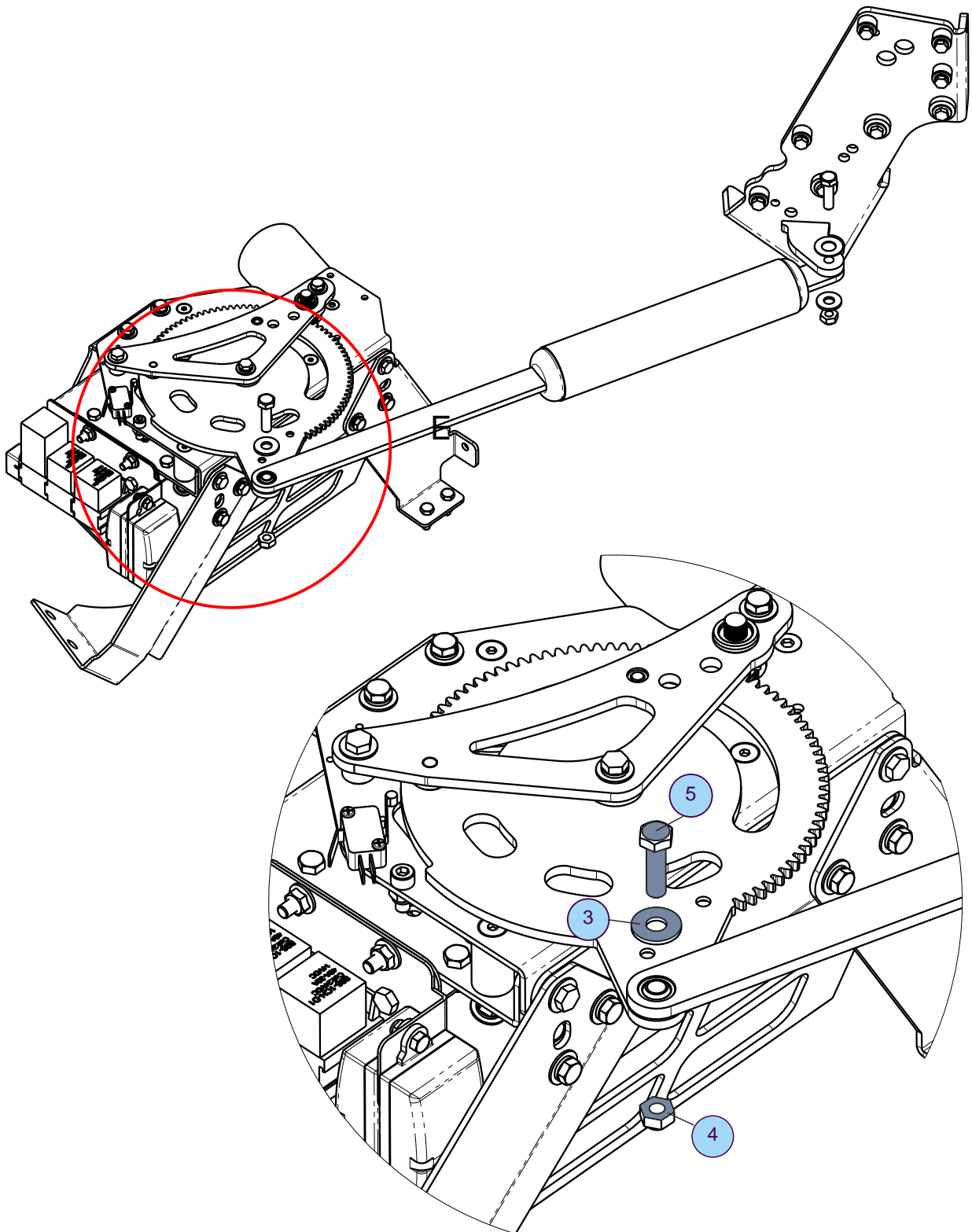


Door Arm Kit
 160-14-304

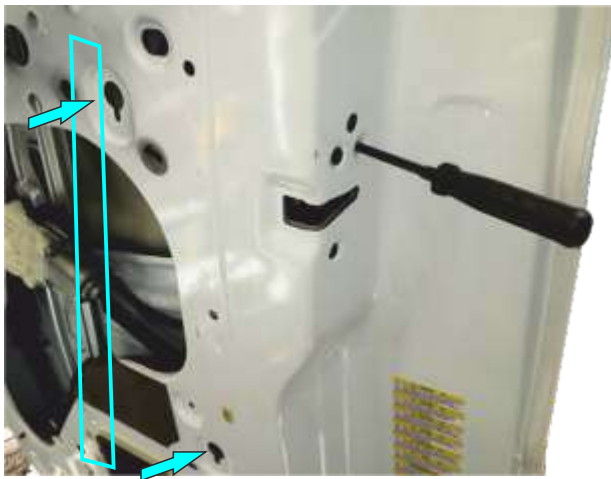


ITEM NO.	PART NUMBER	DESCRIPTION	QTY.
1	111-15-007	AAD Ford Arm	1
2	112-10-077	Cover polyurethane door axial	1
3	600-32-082	Flat washer 8;BN 737	2
4	602-02-008	Hex lock nut M8 DIN 985	2
5	632-08-030	Hex bolt M8X30 DIN933, 8.8	2
6	600-12-001	Delrin gasket 24x12x1	1

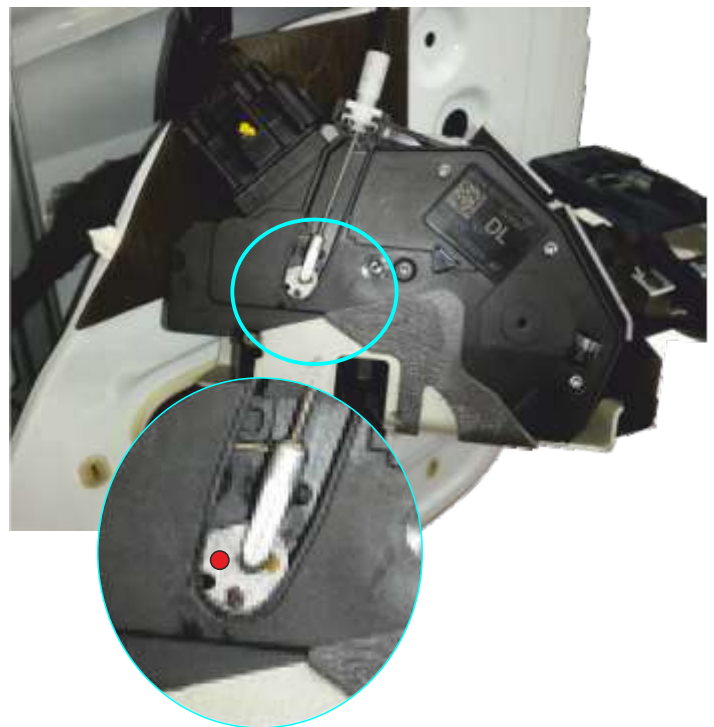




ITEM NO.	PART NUMBER	DESCRIPTION	QTY.
1	111-15-007	AAD Ford Arm	1
2	112-10-077	Cover polyurethane door axial	1
3	600-32-082	Flat washer 8;BN 737	2
4	602-02-008	Hex lock nut M8 DIN 985	2
5	632-08-030	Hex bolt M8X30 DIN933, 8.8	2
6	600-12-001	Delrin gasket 24x12x1	1

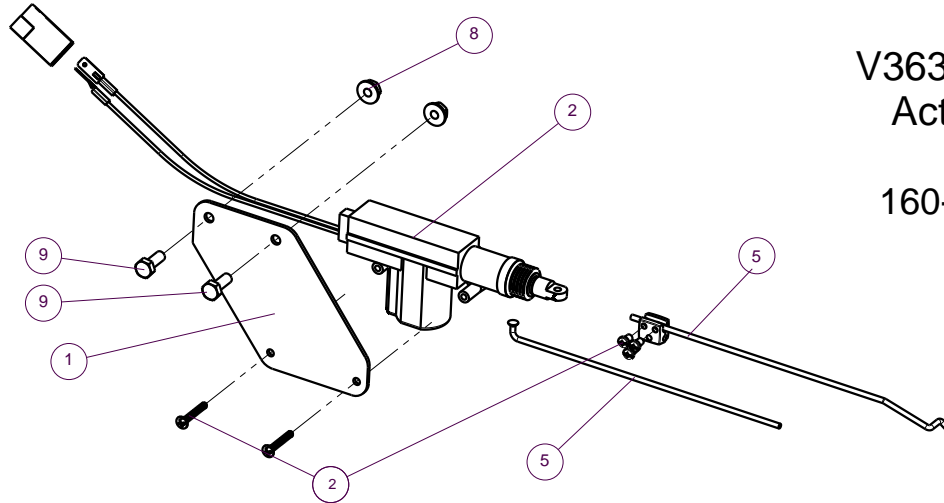


Remove guide rack of side window



V363 Ford AAD
 Actuator Kit

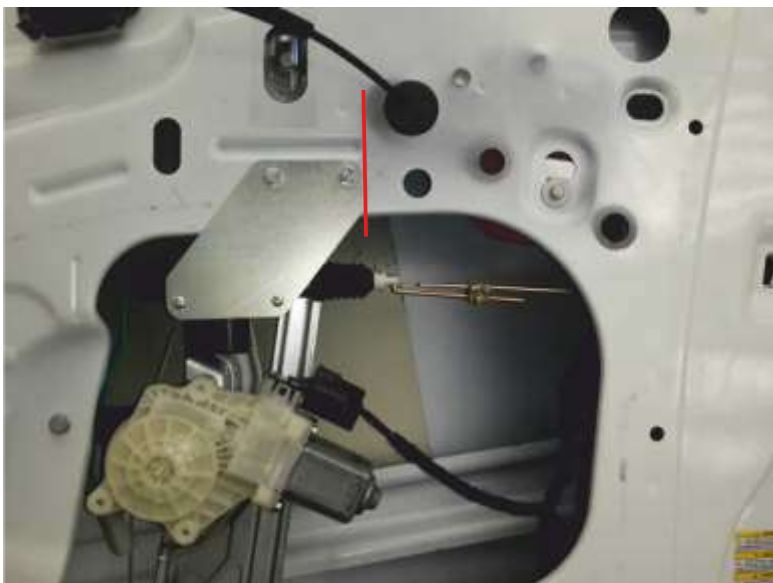
160-14-3634



ITEM NO.	PART NUMBER	DESCRIPTION	Expl./QTY.
1	128-14-811	Bracket	1
2	110-01-006-1	Actuator	1
3	128-14-614A	Lock arm	1
4	601-06-006	Hex flange nut M6 DIN 6923	2
5	632-06-016	Hex cap screw M6x15	2
6	128-14-3636	Arm	1

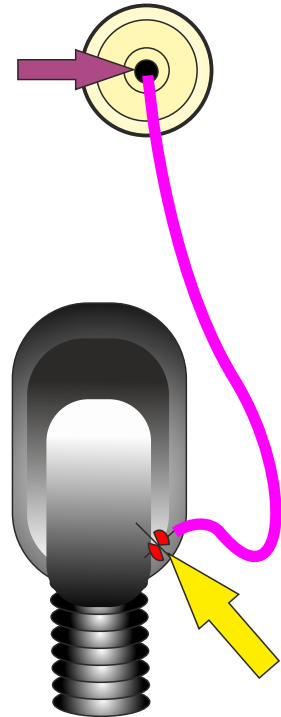
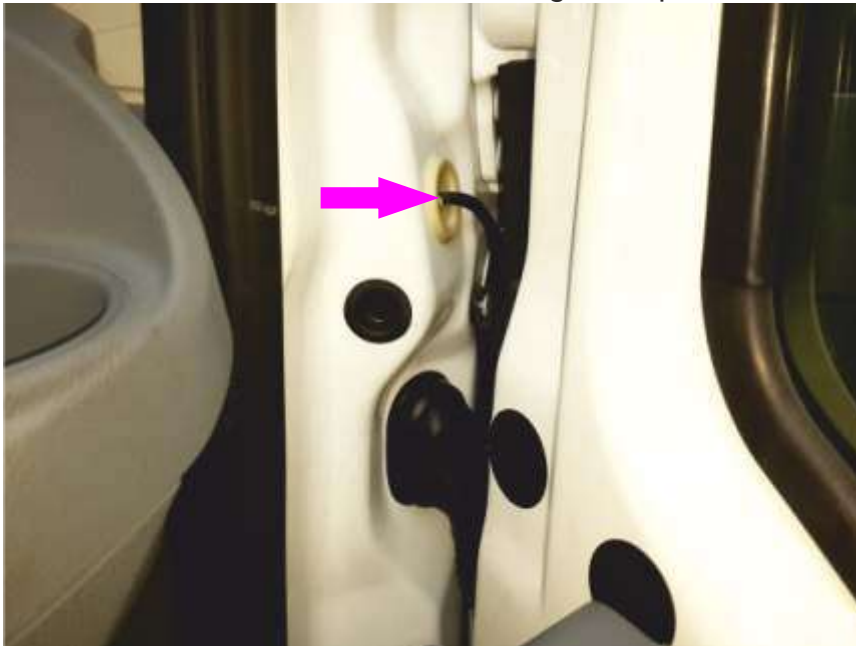


→ Drill 3mm hole



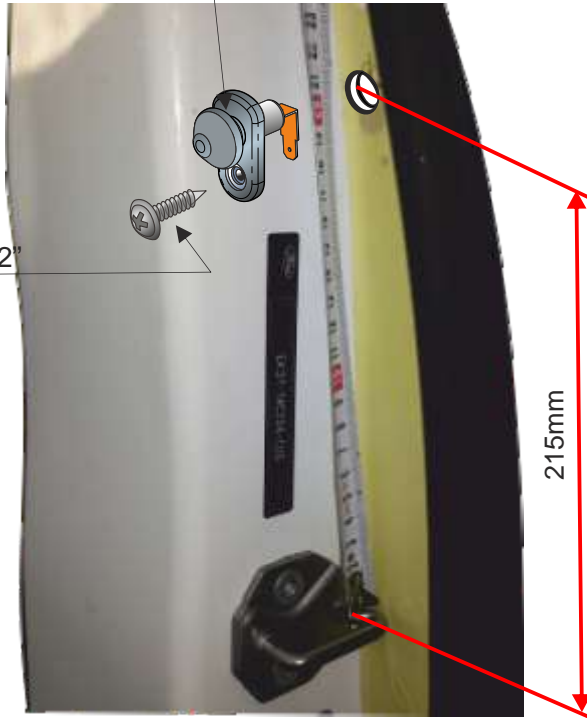


Drill 6mm hole in original cap

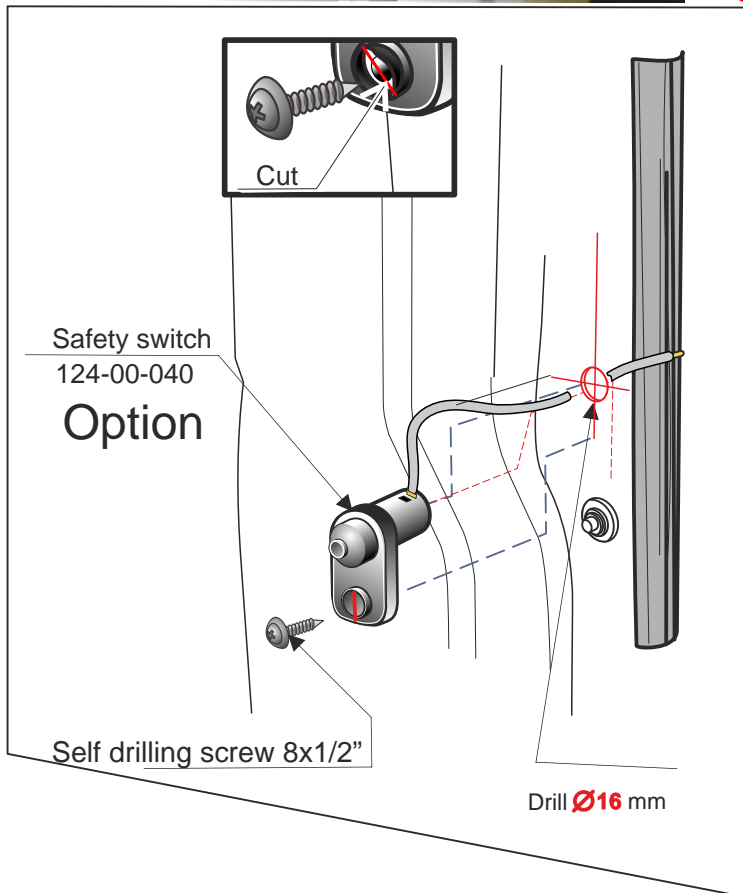


Door Limit Switch
PN:124-00-039 Drill $\varnothing 12$ mm

Self drilling screw 8x1/2"



215mm

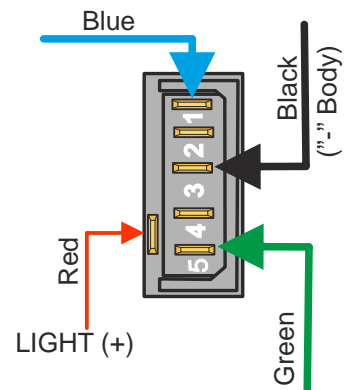




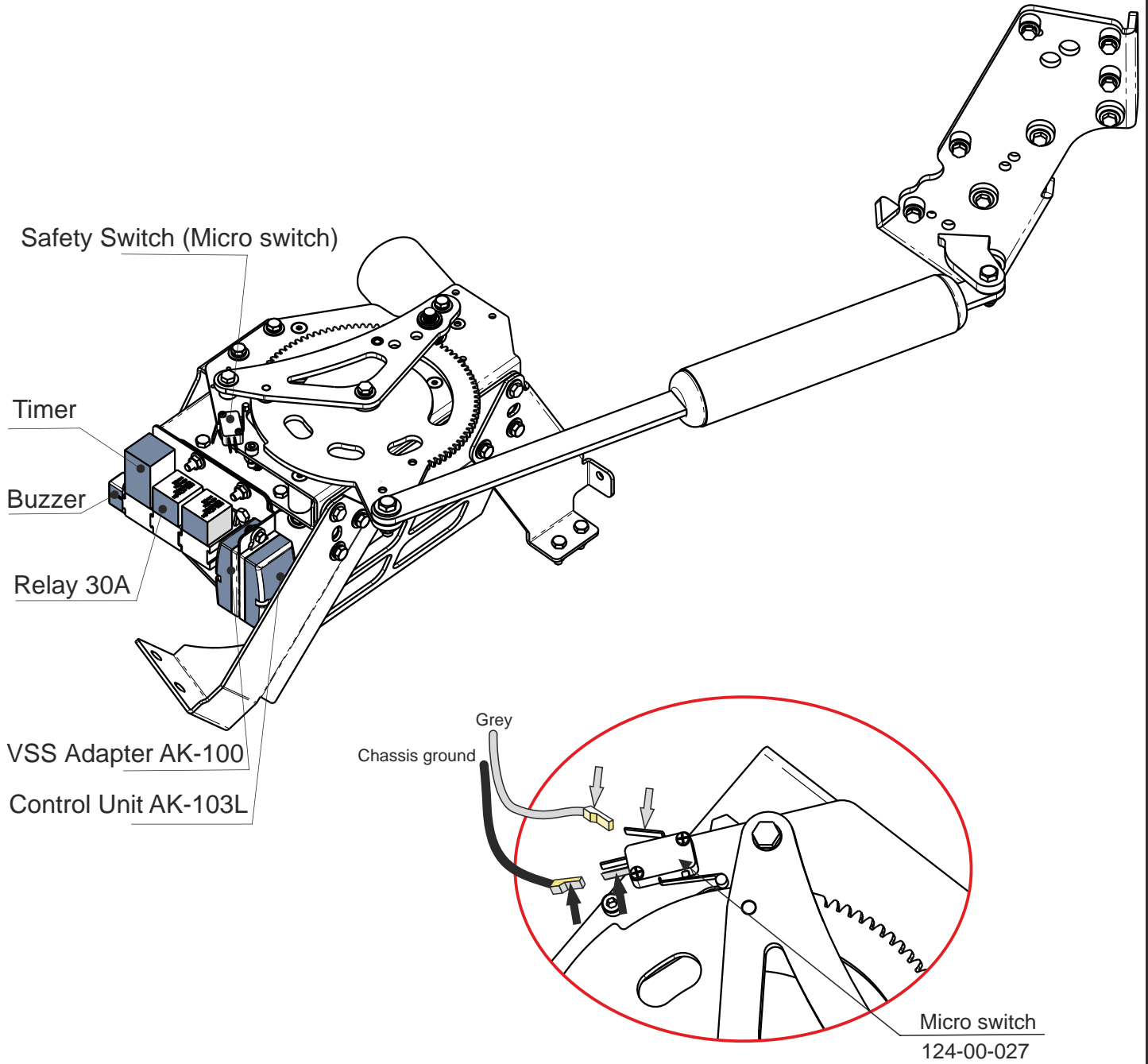
Switch housing
PN:151-14-3632



Philips screw 5/8"



Operating Switch
124-00-026



Cover

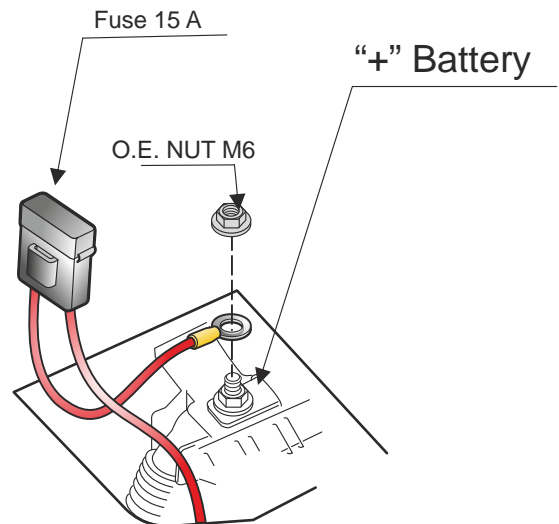
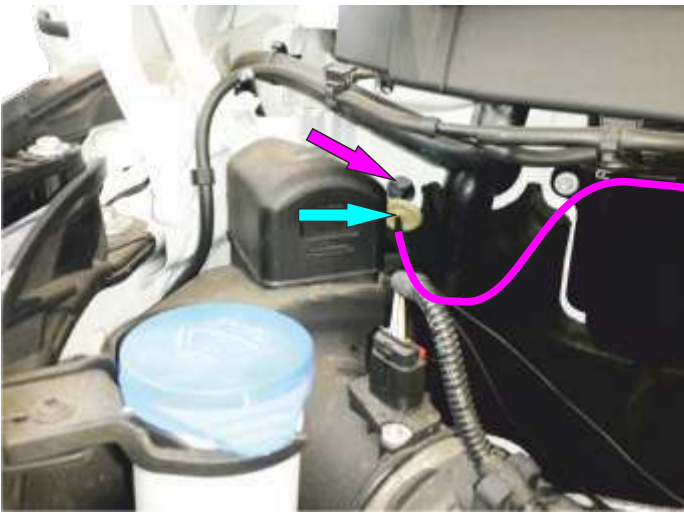
PN:151-14-3630

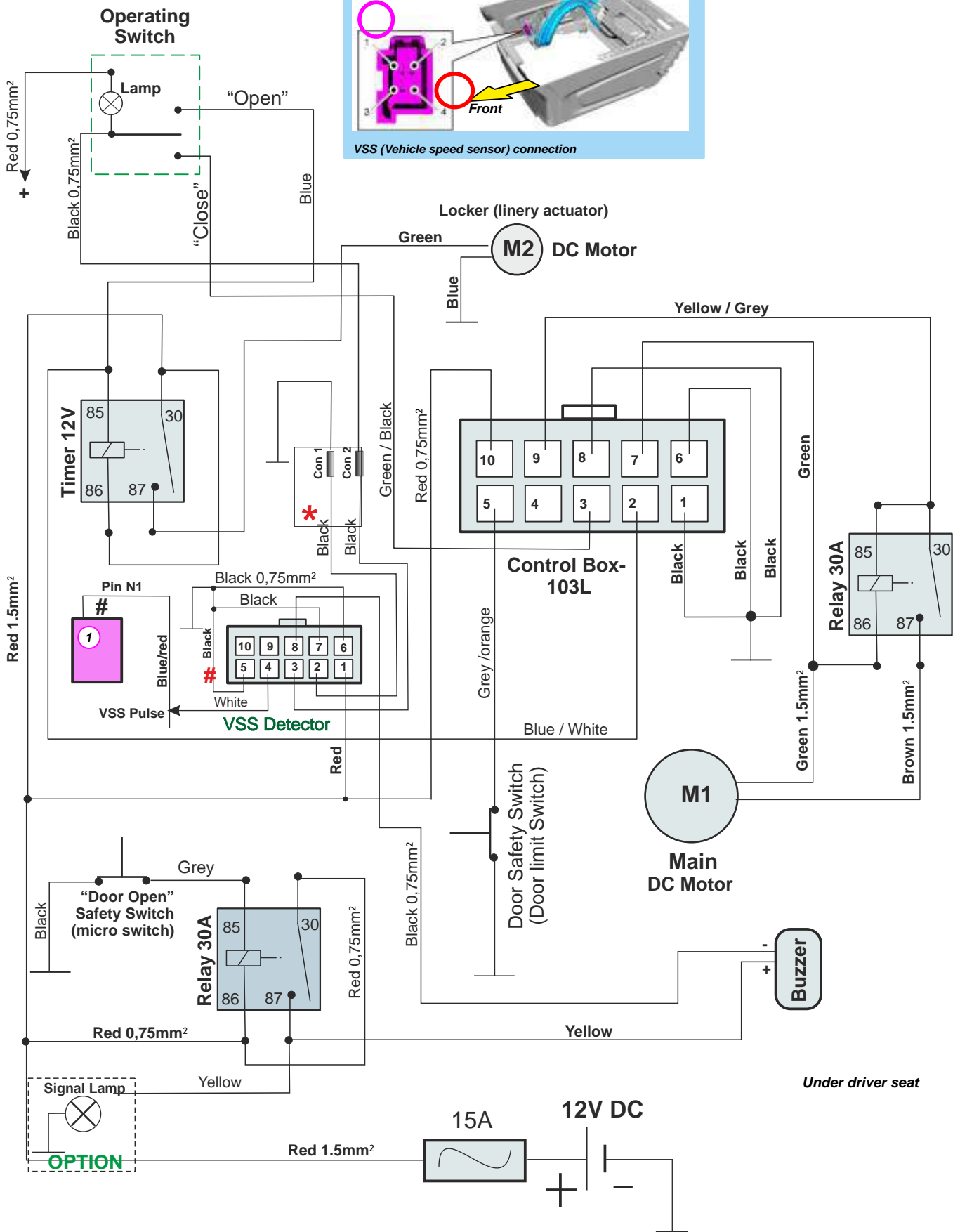
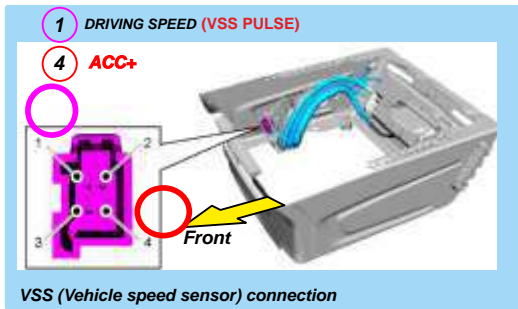


Cover

PN:151-14-3631

➡ Plus wire installation





VSS module (option) disables door opening above 3-5 km/h
Con 1 and Con 2 input and output of VSS module

AAD system Basic Troubleshooting

1. Door does not function in opening or closing modes.
 - Continuously depress the operating knob for a few seconds.
 - Check main fuse
 - Check connections of power terminals to the control units, motor and operation knob.
 - Check connection of the ground terminal (-)
 - Check control unit
2. Door will only function in one direction - opening or closing.
 - Check operation knob
 - Check control unit
3. Door does not close completely.
 - Check voltage of battery, start the engine
 - Check safety switch
 - Try to regulate the door lock “clamp” situated on the door frame.
4. Door does not open, although the motor is trying to move the system
 - Check locker
 - Check power terminals of locker
 - Check timer (1.5-2.0 sec)
5. Door does not automatically reverse when encountering an obstruction during the closing mode.
 - Check safety switch
 - Check control unit
6. Door can be operated although vehicle is in motion.
 - Check connections to the VSS unit.
 - Check VSS unit.
7. Buzzer does not operate, although door is open and the vehicle is in motion.
 - Check buzzer

Paragraphs 6 & 7 appropriate only for systems including the VSS control unit.

Important information

To commence regular operation after the AAD has been disconnected from power (Battery change, Faulty fuse etc.) reset the system by depressing the operation knob for a few seconds.

**AAD – Automatic Axial Door
Operating Instructions**

Prior to operating the **AAD**, verify that there are no obstacles in the way.

The door is electrically operated by a Push Button located on the dashboard. Press the button shortly to fully open or close the door.

While door is in motion, press the switch shortly to stop it.

Continuously pressing the button operates the door until released.

Safety features:

If the door encounters an obstruction while in motion:

While closing: door stops and reopens about 150 mm.

While opening: the door stops.

While the vehicle is in motion: the AAD will not be operational at speeds exceeding 5 km\h

Note 1

For safety (and as emergency operating method), it is possible (by using slight force), to open and close the door manually at all times.

Note 2

If the **AAD** was disconnected from the vehicle battery (for example, after fuse or battery replacement), press the door button for about 5 seconds. The system will self calibrate and reset automatically.

Note 3

Electric door lock is not affected by the AAD system. It remains fully functioning.

Tools required for installation
ASD. AAD. STEP. ATG



Air Reciprocating Saw



Saw BLades



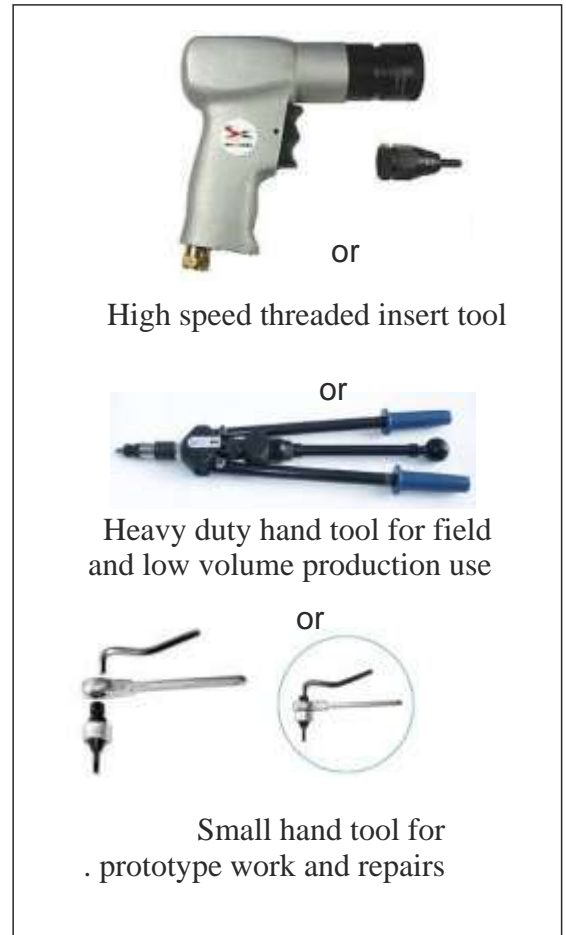
13mm Pneumatic Drill



Air Die Grinder



Hand holding battery-powered electric drill



Soldering-iron



Masking Tape 50MM

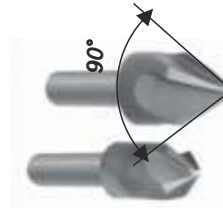
Flashlight or drop light

Pencil or marker

Safety Glasses



Straight Flute HSS Step Drill
diameter 4-30mm



Drill Point Countersinks



Straight Shank Twist Drill

diameter 4mm / 5mm / 6mm / 6.5mm / 7mm / 9.5mm 12mm



T-Handle Set



Hand Files



Heavy Duty Snap Blade Knives



Wire Stripper/Crimper



Locking plier



Combination Wrench Set Metric



Plier Set



1/4" Drive Socket Set metric

