

sugar blossom 

—
SPRING / SUMMER

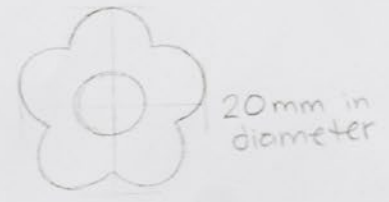
2023 COLLECTION





Florence Flower Ring:

notes:
stainless steel
plated in 14K gold.



engrave
sb
back middle



6mm thick

sides are
to



sugar blossom

Thoughtfully designed by us, for you. From our desks, right to your doorstep, your Sugar Blossom Jewelry is meticulously designed with special consideration for just about everything! There's no denying that it's all in the details.

Each Sugar Blossom collection pulls inspiration from what we're currently loving and dreaming of. Then, we start sketching and every detail is measured and considered down to the millimeter. From sketches to samples, the golden treasures come to life. Our golden rule has always been to make fun jewelry without sacrificing quality materials or practices.

All our jewelry is made from a base of brass or stainless steel and is free of lead, nickel, and cadmium. Sometimes we add tiny treasures, beads, crystals, and enamel to our jewelry. Pieces with a shiny gold finish are plated in 14K gold using an ion plating (often called, Physical Vapor Deposition) method which is the most modern and durable gold plating on the market.

RIDLEY NECKLACE / SB-0537
GEORGIE NECKLACE / SB-0532
JAMES NECKLACE / SB-0539
EMMY BRACELET / SB-0534
ZURI BRACELET / SB-0558



S/S '23 COLLECTION



Ridley Necklace

SB-0537

Finish: Natural shells, glass beads,
semi-precious stones, freshwater
pearls, and brass plated in 14k gold
Length: 16"



Emmy Bracelet

SB-0534

Finish: Freshwater pearls and brass
plated in 14k gold
Length: 7"



Mori Ring

SB-0529 Size 6.5

SB-0530 Size 7.5

Finish: Stainless steel plated in 14k
gold with a cubic zirconia stone



Georgie Necklace

SB-0532

Finish: Freshwater pearls and brass plated
in 14k gold
Length: 17.5"



KAIA BRACELET / SB-0562 ASPEN BRACELET / SB-0564 WILLA BRACELET / SB-0563
LANE BRACELET / SB-0561

IVY ANKLET / SB-0565
REMI ANKLET / SB-0566
NICO ANKLET / SB-0567



KAIA BRACELET / SB-0562
ASPEN BRACELET / SB-0564
WILLA BRACELET / SB-0563
LANE BRACELET / SB-0561
MORI RING / SB-0529



S/S '23 COLLECTION



Kaia Bracelet

SB-0562
Diamond Chain
Finish: Brass plated in 14k gold
Length: 6.75" with a 0.5" extender



Aspen Bracelet

SB-0564
Thin Curb Chain
Finish: Brass plated in 14k gold
Length: 6.75" with a 0.5" extender



Willa Bracelet

SB-0563
Open Curb Chain
Finish: Stainless steel plated in 14k gold
Length: 7"



Lane Bracelet

SB-0561
Herringbone Chain
Finish: Stainless steel plated in 14k gold
Length: 6.75" with a 0.5" extender



sugar blossom



CLARA NECKLACE / SB-0525 REENA NECKLACE / SB-0546
 MYRA CARABINER NECKLACE / SB-0536

S/S '23 COLLECTION



Reena Necklace
 SB-0546
 Finish: Stainless steel plated
 in 14k gold
 Length: 15" with a 2" extender



Frankie Ring
 SB-0548 Size 6.5
 SB-0549 Size 7.5
 Finish: Stainless steel plated in 14k gold



Bailey Ring
 SB-0550 Size 6.5
 SB-0551 Size 7.5
 Finish: Stainless steel plated in 14k gold



Solana Necklace
 SB-0535
 Finish: Semi-precious orange agate
 stones and brass plated in 14k gold
 Length: 16"



Suri Necklace
 SB-0545
 Finish: Brass plated in 14k gold
 Length: 21" with a 2" extender



JOLIE NECKLACE / SB-0414 MAIE NECKLACE / SB-0542
KEL NECKLACE / SB-0309

JOLIE NECKLACE / SB-0414
MAIE NECKLACE / SB-0542
KEL NECKLACE / SB-0309





S/S '23 COLLECTION



Nico Anklet
SB-0567
Finish: Stainless steel plated in 14k gold
Length: 9" with a 1" extender



Ivy Anklet
SB-0565
Finish: Stainless steel plated in 14k gold
Length: 9" with a 1" extender



Remi Anklet
SB-0565
Finish: Brass plated in 14k gold
Length: 9" with a 1" extender



Magnolia Necklace
SB-0538
Finish: Glass beads, natural stones, japanese seed beads, and freshwater pearls with brass plated in 14k gold
Length: 22" with a 2" extender



Aylin Necklace
SB-0544
Finish: Satin rope and brass plated in 14k gold
Length: 18"



S/S '23 COLLECTION



AMORA NECKLACE / SB-0542



Charlotte Necklace
 SB-0547
 Finish: Brass plated in 14k gold
 Length: 15" with a 2" extender



Amora Necklace
 SB-0543
 Finish: Satin rope and brass plated in 14k gold
 Length: 18"



Ari Earrings
 SB-0557
 Finish: Brass and stainless steel plated in 14k gold with cubic zirconia stones



Palmer Ring
 SB-0555 Size 6.5
 SB-0556 Size 7.5
 Finish: Stainless steel plated in 14k gold with cubic zirconia stones



Gigi Ring
 SB-0552 Size 6.5
 SB-0553 Size 7.5
 Finish: Stainless steel plated in 14k gold

JOSEY NECKLACE / SB-0560
GEORGIE NECKLACE / SB-0532
SURI NECKLACE / SB-0545



S/S '23 COLLECTION



Josey Necklace (White + Gold)
SB-0560
Finish: Brass plated in a 14k gold with seed beads
Length: 16" with a 2" extender



Dandy Bracelet
SB-0559
Finish: Brass plated in a 14k gold with seed beads
Length: 6.75" with a 0.5" extender chain



Maie Necklace
SB-0542
Finish: Brass plated in 14k gold.
Length: 16" with a 2" extender chain. Pendant size: 10mm tall 8mm wide



James Necklace
SB-0539
Finish: Brass plated in 14k gold with a cubic zirconia stone
Length: 16 with a 2" extender chain



SOLANA NECKLACE / SB-0535



S/S '23 COLLECTION



EMMY BRACELET / SB-0534 ZURI BRACELET / SB-0558



Zuri Bracelet
SB-0558
Finish: Brass plated in 14k gold
Length: 7"



Bowie Bracelet
SB-0533
Finish: Brass plated in a 14k gold
Length: 7.5"



Millie Necklace
SB-0570
Finish: Brass plated in 14k gold
Length: 16" with a 2" extender

S/S '23 COLLECTION



APRIL EARRINGS / SB-0161 ARI EARRINGS / SB-0557
KENNIE EAR CUFFS / SB-0275

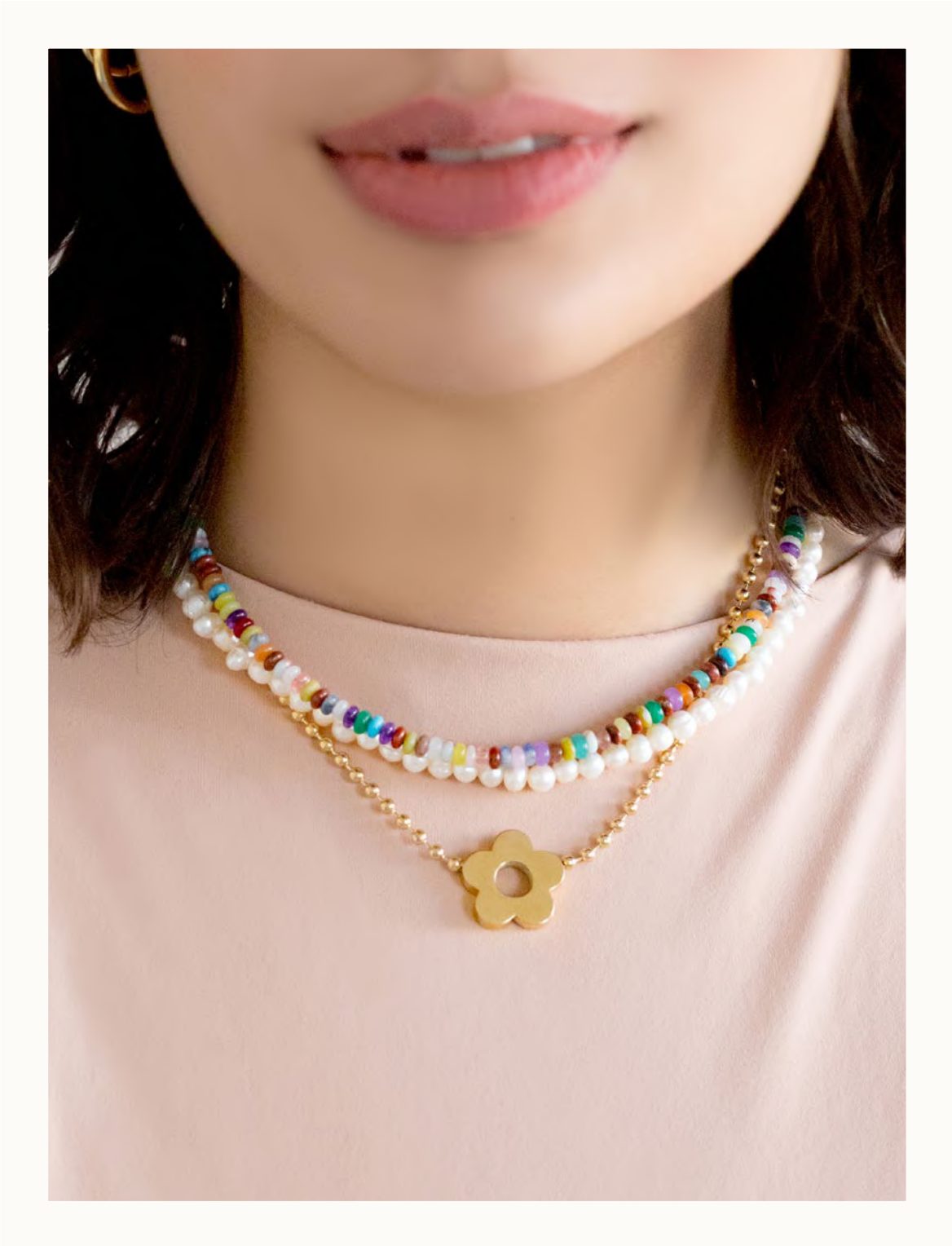


Myra Carabiner Necklace
SB-0536
Finish: Brass plated in 14k gold
Length: 18"



RIDLEY NECKLACE / SB-0537

S/S '23 COLLECTION



EMERY NECKLACE / SB-0457 JOLIE NECKLACE / SB-0501
 VALENCIA NECKLACE / SB-0475



Valencia Necklace
 SB-0475
 Finish: Brass plated in 14k gold
 Length: 16"



Florence Ring
 SB-0334 Size 6.5
 SB-0335 Size 7.5
 Finish: Stainless steel plated in 14k gold



Florence Ring
 SB-0513 Size 7.5
 Finish: Stainless steel



Rishi Necklace
 SB-0476
 Finish: Stainless steel



S/S '23 COLLECTION



Romeo Necklace

SB-0477

Finish: Stainless steel plated in 14k gold
Length: 15.5" chain with a 2" extender



Meg Necklace

SB-0385

Finish: Stainless steel plated in 14k gold
Length: 16" with a 1" extender chain
Clasp can be done up into the chain



Pia Earrings

SB-0482

Finish: Brass plated in 14k gold with a stainless steel post, cubic zirconia stones
Size: 10mm diameter, 2mm thick
Snap Closure



Grayson Ring

SB-0494 Size 6.5

SB-0495 Size 7.5

Finish: Stainless steel plated in 14k gold



LOCKLYN NECKLACE / SB-0471 MIKELYN NECKLACE / SB-0472 BROOKLYN NECKLACE / SB-0469
NELL BRACELET / SB-0439 INDY BRACELET / SB-0439



LOCKLYN NECKLACE / SB-0471 GIANNI NECKLACE / SB-0470
BROOKLYN NECKLACE / SB-0469 MIKELYN NECKLACE / SB-0472



Locklyn Necklace
 SB-0471
 Finish: Brass plated in 14k gold
 Length: 18" chain with a 2" extender



Mikelyn Necklace
 SB-0472
 Finish: Brass plated in 14k gold
 Length: 18" chain



Kinoko Necklace
 SB-0761
 Finish: Brass pendant and stainless steel chain plated in 14k gold
 Length: 16" chain with a 2" extender



Emery Necklace
 SB-0457
 Finish: Brass plated in 14k gold with semi-precious stone beads
 Length: 16"



Indy Bracelet
 SB-0458
 Finish: Brass plated in 14k gold with semi-precious stone beads
 Length: 7.25"



Kylie Ear Cuff
 SB-0333
 Finish: Brass plated in 14k gold
 Size: 13mm in diameter
 Opening: 5mm



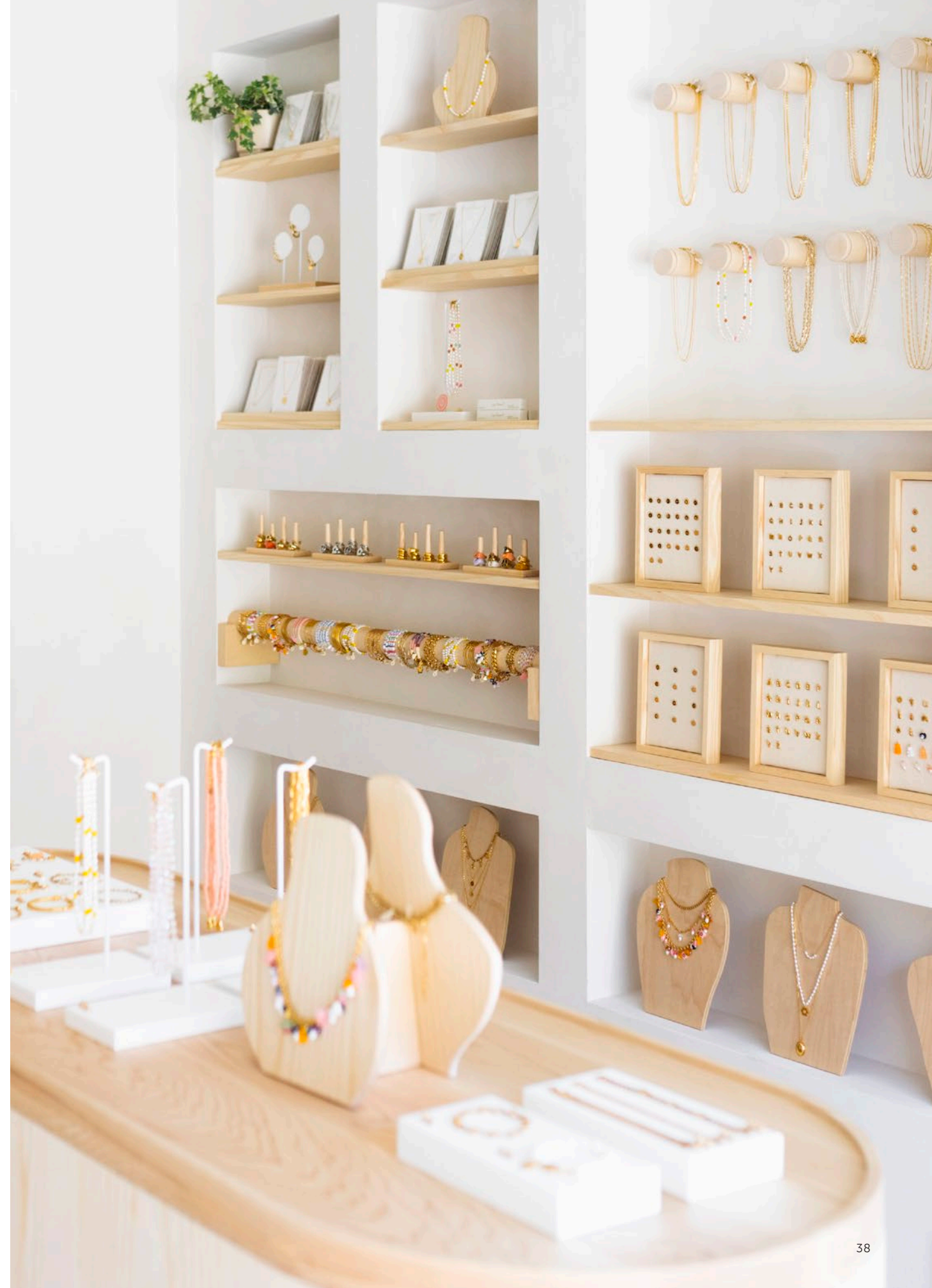
Verona Earrings
 SB-0332
 Finish: Brass plated in 14k gold with stainless steel posts
 Size: 13mm in diameter



Eve Ring
 SB-0347 Size 6.5
 SB-0348 Size 7.5
 Finish: Stainless steel plated in 14k gold



SUGAR BLOSSOM STUDIO | WINNIPEG, MANITOBA



IOS NECKLACE / SB-0515
COMO BRACELET / SB-0485
AMBER BRACELET / SSB-0520



S/S '23 COLLECTION



ios Necklace

SB-0515

Finish: Brass plated in 14k gold with semi-precious stone beads

Length: 16" with a 2" extender



Leona Ring

SB-0080 Size 6.5

SB-0140 Size 7.5

Finish: Stainless steel plated in 14k gold



Como Bracelet

SB-0485

Finish: Brass plated in 14k gold

Length: 7.25"



Goldie Earrings

SB-0356

Finish: Stainless steel plated in 14k gold

Size: 22mm in diameter

Snap Closure



MAE BRACELET / SB-0479
ZEV BRACELET / SB-0478
BANKS BRACELET / SB-0464
GETTY BRACELET / SB-0463



MAE BRACELET / SB-0479 ZEV BRACELET / SB-0478 BANKS BRACELET / SB-0464
GETTY BRACELET / SB-0463



Lolli Necklace
 SB-0402
 Finish: Brass plated in 18k gold with glass and acrylic charms
 Length: 16" with a 2" extender



Lolli 2.0 Necklace
 SB-0455
 Finish: Brass plated in 18k gold with glass and acrylic charms
 Length: 16" with a 2" extender



Kit Bracelet
 SB-0403
 Finish: Stainless steel plated in 18k gold with glass and acrylic charms
 Length: 6.75" extends to 7.5"



Mae Bracelet
 SB-0479
 Finish: Brass plated in 14k gold, glass beads and cotton string
 Length: When the bracelet is fully opened diameter is 3", pull ends to tighten on the wrist



Kit 2.0 Bracelet
 SB-0454
 Finish: Stainless steel plated in 18k gold with glass and acrylic charms
 Length: 6.75" extends to 7.5"



Zev Bracelet
 SB-0478
 Finish: Brass plated in 14k gold, glass beads and cotton string
 Length: When the bracelet is fully opened diameter is 3", pull ends to tighten on the wrist



KIT 2.0 BRACELET / SB-0454

S/S '23 COLLECTION



Tedi Necklace
SB-0474
Finish: Brass plated in 14k gold
Length: 18" chain with a 2" extender



Jesse Necklace
SB-0415
Engraved with 'HOWDY' on the backside
Finish: Brass plated in 18k gold
Length: 18" chain with a 2" extender



Brooklyn Necklace
SB-0469
Finish: Brass plated in 14k gold
Length: 19" chain with a 2" extender



Amber Bracelet
SB-0520
Finish: Brass plated in 14k gold with freshwater pearls and a glass heart
Length: 7"



Banks Bracelet
SB-0464
Finish: Brass plated in 14k gold with glass seed beads
Length: 6.5" extends to 7.5"



Getty Bracelet
SB-0463
Finish: Brass plated in 14k gold with glass seed beads
Length: 6.5" extends to 7.5"



Helen Necklace
SB-0413
Finish: Brass plated in 14k gold
Length: 16" chain with a 2" extender



Violet Necklace
SB-0381
Engraved with "YOU ARE MAGIC" on the backside
Finish: Brass plated in 18k gold
Length: 25" chain with 2" extender



JAMES NECKLACE / SB-0539

PAVÉ LETTER NECKLACE / SB-0503
JAMES NECKLACE / SB-0539
MYRA CARABINER NECKLACE / SB-0536



ADELAIDE NECKLACE / SB-0447
CAPRI NECKLACE / SB-0459
AMORA NECKLACE / SB-0543



S/S '23 COLLECTION



Capri Necklace

SB-0432

Finish: Brass plated in 14k gold with semi-precious stone beads

Length: 16" with a 2" extender



April Earrings

SB-0161

Finish: Stainless steel plated in 14k gold

Size: 16mm in diameter

Snap Closure



Harlow Bracelet

SB-0500

Finish: Stainless steel plated in 14k gold

Length: 7"



Henley Ring

SB-0488 Size 6.5

SB-0489 Size 7.5

Finish: Stainless steel plated in 14k gold

**Jewelry Card samples on page 109.*

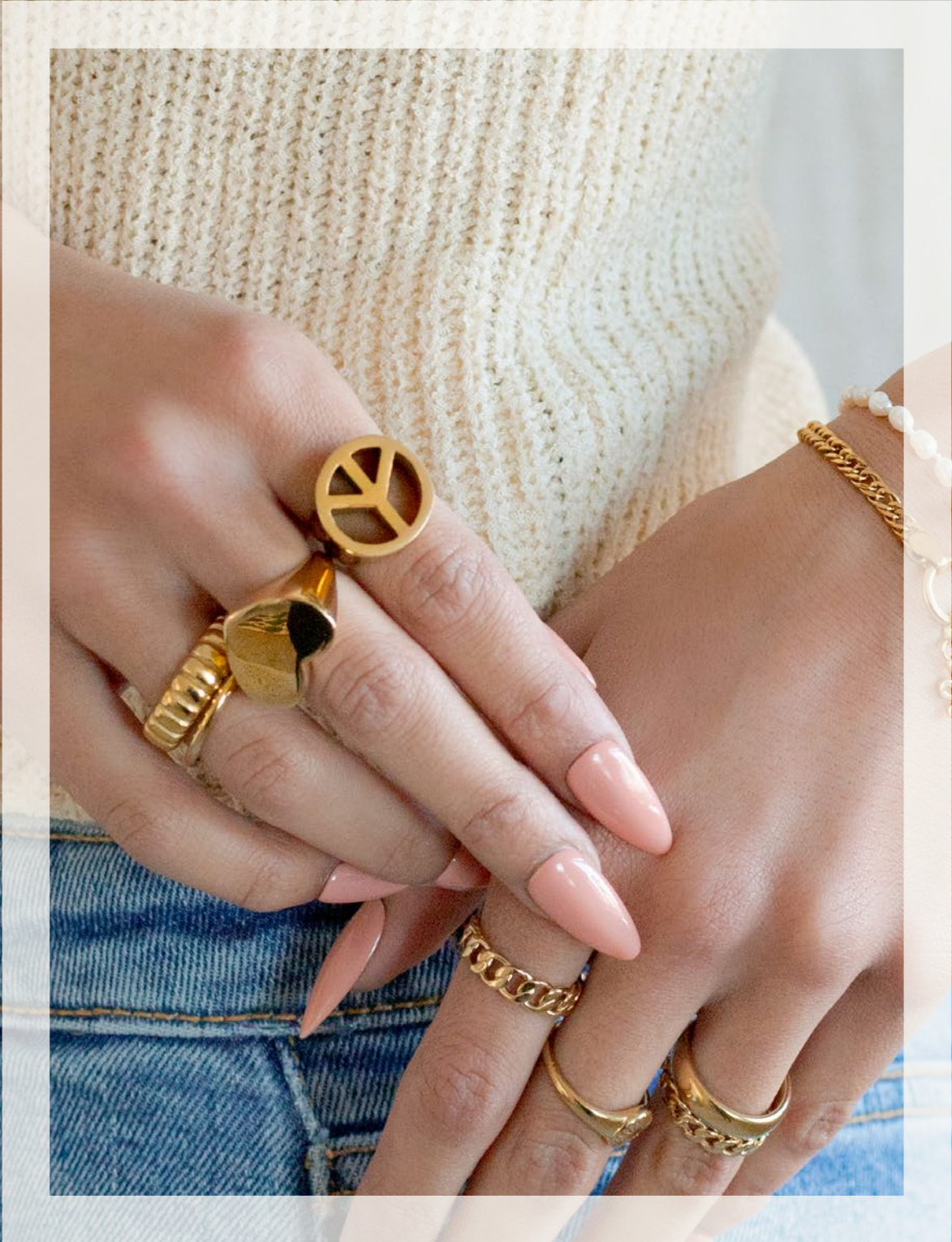


EMMY BRACELET / SB-0534

GOLDIE EARRINGS / SB-0356
VERONA NECKLACE / SB-0354



S/S '23 COLLECTION



FABLE RING / SB-0363 GIGI RING / SB-0552 CHARLIE RING / SB-0496 JACE RING / SB-0510
 EVE RING / SB-0449 LEONA RING / SB-0080 BLAKELYN RING / SB-0508



Mary-Kate Bracelets
 SB-0498
 Finish: Brass plated in 14k gold
 Length: 6.25" extends to 7.25"
 Set of 2 each featuring a different chain



Bettie Earring
 SB-0526
 Finish: Stainless steel plated in 14k gold
 Features a sparkle chain



Charlie Ring
 SB-0496 Size 6.5
 SB-0497 Size 7.5
 Finish: Stainless steel plated in 14k gold



Jace Ring
 SB-0250 size 6.5
 SB-0223 size 7.5
 Finish: Stainless Steel plated in 14k gold



Ziggy Necklace
 SB-0541
 Finish: Brass plated in 14k gold
 Length: 16"

PALMER RING / SB-0555
FLORENCE RING / SB-0334
COMO BRACELET / SB-0485



FLORENCE RING / SB-0257 PALMER RING / SB-0257 HENLEY RING / SB-0488
COMO BRACELET / SB-0485 HARLOW BRACELET / SB-0500

S/S '23 COLLECTION



Rita Necklace
SB-0427
Finish: Brass plated in 18k gold
with cubic zirconia stones
Length: 17" chain with a 2" extender



Lou Necklace
SB-0428
Finish: Brass plated in 18k gold
Length: 17.25" chain with a 2" extender



Chariot Necklace
SB-0380
Finish: Brass plated in 14k gold
Length: 15.5" chain with a 2" extension



Blakelyn Ring
SB-0508 Size 6.5
SB-0509 Size 7.5
Finish: Stainless steel plated in 14k gold



Pepper Earrings
SB-0492
Finish: Brass plated in 14k gold
Size: 20mm diameter, 5mm thick
Snap Closure



Rue Earrings
SB-0493
Finish: Brass plated in 14k gold
Size: 30mm diameter hoops
Snap Closure



Mada Necklaces
SB-0452
Finish: Brass plated in 14k gold
with freshwater pearls
Length: 16" with a 2" extender



Gianni Necklace
SB-0470
Engraved with "KEEP SMILING"
on the backside
Finish: Brass plated in 14k gold
Length: 16" chain with a 2" extender

RUE EARRINGS / SB-0523
PEPPER EARRINGS / SB-0524
GWEN NECKLACE / SB-0528
VERA NECKLACE / SB-0528



S/S '23 COLLECTION



Meadow Earrings Silver

SB-0522

Finish: Stainless steel

Size: 12mm in diameter

Snap Closure



Pepper Earrings Silver

SB-0524

Finish: Stainless steel

Size: 20mm diameter hoops

Snap Closure



Rue Earrings Silver

SB-0523

Finish: Stainless steel

Size: 30mm diameter hoops

Snap Closure



Gwen Necklace

SB-0528

Finish: Stainless steel

Length: 16" with a 1" extender chain

Clasp can be done up in the chain



Oxford Necklace

SB-0527

Finish: Stainless steel

Length: 7" with a 1" extender chain

Clasp can be done up in the chain



FLORENCE RING SILVER / SB-0513
 FABLE RING SILVER / SB-0511
 BEATRICE RING SILVER / SB-0512
 GIGI RING SILVER / SB-0554
 HENLEY RING SILVER / SB-0490



FLORENCE RING / SB-0334 FLORENCE RING SILVER / SB-0513 FABLE RING / SB-0363
 FABLE RING SILVER / SB-0511 BEATRICE RING SILVER / SB-0512
 JACE RING SILVER / SB-0510

RUE EARRINGS / SB-0523
 PEPPER EARRINGS / SB-0524
 GWEN NECKLACE / SB-0528
 VERA NECKLACE / SB-0528
 OXFORD BRACELET / SB-0527
 GIGI RING / SB-0554



S/S '23 COLLECTION



Goldie Earrings Silver
 SB-0521
 Finish: Stainless steel
 Size: 22mm diameter hoops
Snap Closure



Beatrice Ring Silver
 SB-0512 Size 7.5
 Finish: Stainless steel



Jace Ring Silver
 SB-0510 size 7.5
 Finish: Stainless steel



Vera Necklace Silver
 SB-0401
 Finish: Stainless steel
 Length 17"



Henley Ring
 SB-0490 Size 6.5
 SB-0491 Size 7.5
 Finish: Stainless steel



Gigi Ring Silver
 SB-0554 Size 7.5
 Finish: Stainless steel



SUNNIE NECKLACE / SB-0538

GOLDIE EARRING / SB-0356
APRIL EARRING / SB-0161
KENNIE EAR CUFF / SB-0275
MORI RING / SB-0529



S/S '23 COLLECTION



Sage Earrings

SB-0514
Finish: Stainless steel plated in 14k gold
Size: 15mm diameter hoops
Snap Closure



Maryel Earrings

SB-0431
Finish: Brass plated in 14k gold
Size: 17mm diameter hoops
Snap Closure



London Bracelet

SB-0331
Finish: Stainless steel plated in 14k gold
Length: 7.75"



Ruth Necklace

SB-0516
Finish: Stainless Steel in 14k gold
Length: 16" with a 2" extender



Stella Necklace

SB-0092
Finish: Brass plated in 14k gold
Length: 21.5" chain with a 2" extender



Sophie Necklace

SB-0158
Finish: Brass plated in 14k gold
Length: 18" chain with a 2" extender



Esme Locket Necklace

SB-0404
Engraved with "FOREVER YOURS"
Finish: Brass plated in 18k gold
Length: 17.75" chain with a 2" extender



Bindi Necklace

SB-0442
Finish: Brass plated in 18k gold with cubic zirconia stone
Length: 18" chain with a 2" extender



S/S '23 COLLECTION



VERA NECKLACE / SB-0401 DANDY BRACELET / SB-0559 ZURI BRACELET / SB-0558
 EMMY BRACELET / SB-0534 GIGI RING / SB-0552



Kel Necklace
 SB-0309
 Finish: Stainless Steel plated in 14k gold
 Length: 16.5"
 Width: 4mm



Clara Necklace
 SB-0525
 Finish: Stainless steel plated in 14k gold
 Length: 15.5" extends to 18.5"



Fable Ring
 SB-0363 Size 6.5
 SB-0364 Size 7.5
 Finish: Stainless steel plated 14k gold



Fable Ring
 SB-0512 Size 7.5
 Finish: Stainless steel



Kennie Ear Cuffs (Set of 2)
 SB-0331
 Finish: Brass plated in 14k gold
 Size: 13mm diameter

APRIL EARRING / SB-0161
ARI EARRING / SB-0557
KENNIE EAR CUFF / SB-0275
BLAKELYN RING / SB-0508



MORI RING / SB-0529 KOURT EAR CUFF / SB-0531

JOLIE NECKLACE / SB-0414
MAIE NECKLACE / SB-0542
KEL NECKLACE / SB-0309



S/S '23 COLLECTION



Jolie Necklace

SB-0414

Finish: Freshwater pearls, brass plated in 14k gold

Length: 16"



Meadow Earrings

SB-0432

Finish: Brass plated in 14k gold

Size: 17mm diameter hoops

Snap Closure



Clover Earrings

SB-0332

Finish: Stainless steel plated in 14k gold

Size: 13mm in diameter

Snap Closure



Kat Necklace

SB-0257

Finish: Stainless steel plated in 14k gold

Size: 17"

S/S '23 COLLECTION



SWEET MAMA NECKLACE / SB-0233



Sweet Mama Necklace
SB-0233
Finish: Brass plated in 14k gold
Length: 16" with a 2" extension



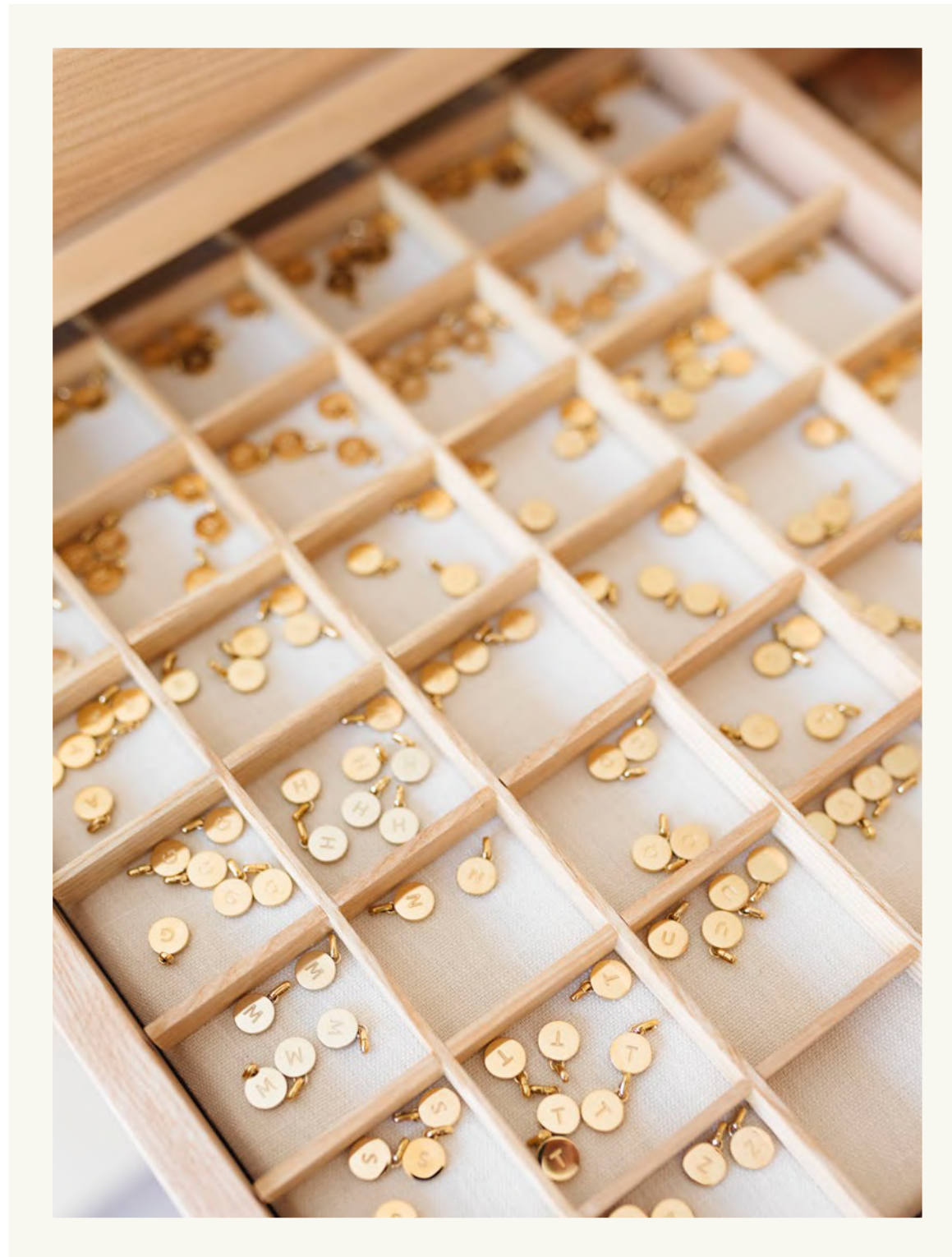
Mama Necklace
SB-0119
Engraved with 'MAMA'
Finish: Brass plated in 14k gold
Length: 16" with a 2" extender



Little Mama Bracelet
SB-0164
Finish: Stainless steel plated in 14k gold
Length: 7.5"

Sonny Bracelet
SB-0326
Finish: Brass plated in a shiny 14k gold
Length: 7" extends to 7.5"





SUGAR BLOSSOM STUDIO | CUSTOMIZE ME CHARMS

S/S '23 COLLECTION



Adelaide Necklace
 SB-0447
 Finish: Freshwater peach pearls,
 glass beads, brass plated in 18k gold
 Length: 15.5" with a 2" extender



Georgia Anklet
 SB-0438
 Finish: Brass plated in 18k gold
 Length: 9" chain with a 1" extender



Flossie Necklace
 SB-0262
 Finish: Brass plated in a shiny 18k gold
 Two best friend necklaces
 Length: 17" with 2" extension



Fiona Bracelet
 SB-0331
 Finish: Brass plated in 14k gold
 Length: 7.75"



Taffy Ring
 SB-0423 Size 6.5
 SB-0424 Size 7.5
 Engraved with tiny treasures
 Finish: Stainless steel plated in 18k gold



Beatrice Ring
 SB-0236 Size 6.5
 SB-0256 Size 7.5
 Finish: Brass plated in 14k gold



Palma Necklace
 SB-0440
 Finish: Brass pendant plated in 18k
 gold with a stainless steel chain
 plated in 18K gold
 Length: 17"



Amie Necklace
 SB-0760
 Finish: Brass plated in 14k gold
 Features two chains (Box chain and
 thin cable chain)
 Length: 16" with a 2" extender






CUSTOMIZE ME COLLECTION



FOR WHOLESALE INQUIRIES
cady@sugarblossomjewelry.com

SUGAR BLOSSOM STUDIO
138 Provencher Boulevard
Winnipeg, Manitoba
R2H 0G3 Canada

 SHOPSUGARBLOSSOM.COM
 @SUGARBLOSSOMJEWELRY
 SUGARBLOSSOMJEWELRY