

purecold

INSPIRATION 2

(2CS7MA1)

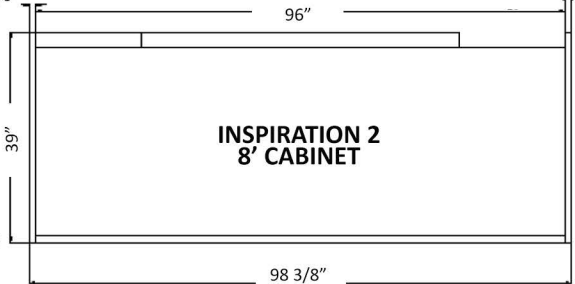
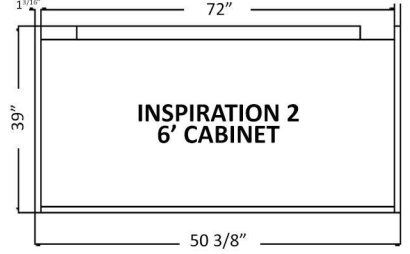
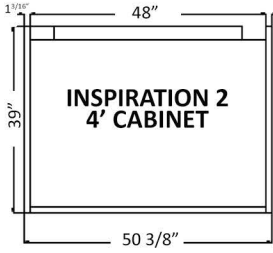
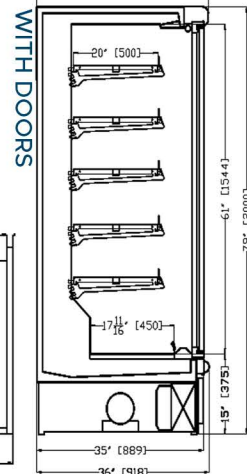
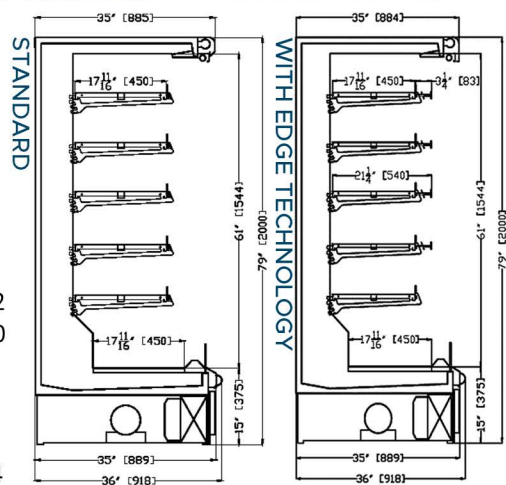
Self-Contained, Medium Temperature
Slide-Out Bottom Mount
Open-Air & Doored Profile Merchandiser



Case Length	48"	72"	96"
Case Height	79"	79"	79"
Case Depth (Add 6" for Setback)	36"	36"	36"
Total Display Area (ft ²)	20.3	30.48	40.64
Refrigerated Volume (ft ³)	30.45	45.72	60.96
Maximum Shelf Depth	18"	18"	18"

INSPIRATION2 Energy Data

<i>*Standard</i>			
THR in BTU/HR instantaneous	8,345	12,092	16,872
THR in BTU/HR average	7,564	11,065	15,340
Net Environmental Cooling Effect (BTU/hr)	2,642	4,572	6,175
Daily Energy Use (Kwh)	17.55	21.68	34.10
<i>*With edge technology</i>			
THR in BTU/HR instantaneous	6,564	9,468	12,624
THR in BTU/HR average	5,420	6,680	10,431
Net Environmental Cooling Effect (BTU/hr)	2,183	2,687	4,199
Daily Energy Use (Kwh)	12.07	14.86	23.22
<i>*With Doors</i>			
THR in BTU/HR instantaneous	6,564	9,468	12,624
THR in BTU/HR average	3,282	4,734	6,312
Net Environmental Cooling Effect (BTU/hr)	2,953	4,260	5,680
Daily Energy Use (Kwh)	5.24	7.72	10.30



INSPIRATION2 Power Information

208V-1P (nec) 4 Wire (2-hots - 1 neutral - 1 ground)

Electrical Data (115V 60Hz)	Amps	Amps	Amps
Case Load	0.5	1.0	1.0
Electrical Data (208V 60Hz)			
Condensing Unit	4.5	6.0	8.5
MOCP (per phase) Amps	10	10	15

Electrical Connections - Bottom Right Hand Side

features

- No drains, no pipework. plug and play!
- Low energy and heat rejection values
- Fixtures have similar pack-out as remote application
- Recessed wheels and leveling bolts
- Self-evaporative drain pan
- Condensing unit on pull out tray^{1/16"}
- Single electrical connection (NEMA Twist Lock)
- Medium Temperature for Dairy - Produce - Beverage
- Fits through 38" Standard Opening
- 4 foot | 6 foot | 8 foot Options
- Refrigerant: R448a
- Lighting: LED Mullion Lighting
- Shelving: 5x18" (open) 5x22" (doors)
- Ticket Rail: 1 1/4"



Conforming to UL471 & NSF7
DOE 2017 Compliant



www.prohvacr.com