

powerhouse
sport



CUSTOM ROWING CLOTHING

Since 1994





INTRODUCTION

Powerhouse Sport design and produce high performance custom clothing for rowers.

Founded in 1994 just outside Belfast in Northern Ireland, Powerhouse Sport clothing is now worn all around the world, by everyone from Olympic Champions to weekend paddlers.



CHOOSE POWERHOUSE

Just like training for success at any level, there are no shortcuts to almost 30 years in business.

When you order from us you benefit from our vast accumulated experience, knowledge and expertise.

We have built a solid reputation over 30 years for providing excellent products and services.

We don't make excuses, we make custom clothing.



ETHICAL

Powerhouse Sport garments are produced to a high standard using the finest quality materials, handmade in our European production facility by highly skilled staff.

We constantly strive to improve our products and processes.

Embracing the latest technologies in fabrics and machinery to ensure the best garments are produced in the best environment.



CUSTOM PROCESS

CONTACT US

E: sales@powerhousesport.com
T: +44 28 9268 9890

Every club or organisation has a unique requirement - it's best to discuss yours with us by phone or email, and based on our experience we can advise the best way to proceed with your order

DESIGN

We will work with you to create a unique identity for your club, and you can help as much as you like! Or we can match to your traditional design.

ORDER

Place your order directly with our sales team, or take the pressure off and set up an online Team Store and we will manage the orders from your members, from payment to delivery.

SUPPORT

We are at the end of a phone or an email to help with detailed product information and advice on sizing etc

LEAD TIME

Once your order is placed, sit back and relax while it is handmade in our factory, this is usually 4-6 weeks. We are always realistic about lead times, and we don't take on orders we can't fulfill.

DELIVERY

As soon as all the garments are ready, we will sort them into individual packages and despatch them through your chosen method.



PRODUCTS



P7 ROWING SUITS



P8 SHORTS & LEGGINGS



P9 BASE & MID LAYERS



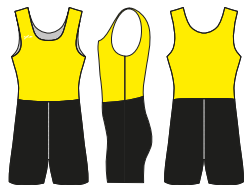
P10 JACKETS



P11 GILETS

P12 OFF WATER

BORA
no side panel



CIRRUS
3cm side panel



RIDGE
6cm side panel



SQUALL
side panel with slight flare to front only



CHINOOK
side panel with slight flare to front & back



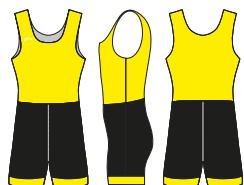
CYCLONE
side panel with full flare to front only



TWISTER
side panel with full flare to front & back



BORA CUFF
no side panel and 4.5cm cuff



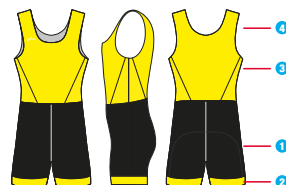
RIDGE CUFF
6cm side panel and 4.5cm cuff



RACER BACK
an option for female sizes on any of the designs



BORA X-CUFF
our top of the range one-piece rowing suit



With our BORA X-CUFF suit we have created a rowing suit which does more than simply display your club's identity - a suit which could potentially enhance performance.

- 1 Starting with the shorts we use a 'Hydrophilic' layer in the area which is in contact with the seat to draw moisture away from your skin to optimise comfort.
- 2 The shorts have a deep mesh Power Cuff with integrated silicone gripper to hold the leg of the suit in the optimum position.
- 3 The side panels of the vest are made from a lightweight stretch mesh to enhance breathability and combined with the flat seam joining the front and back panels will disrupt airflow potentially enhancing the aerodynamic effect.
- 4 The centre front and back of the vest utilise nano technology with a water repellent treatment resulting in splashes of water beading and falling away rather than soaking in to the fabric.

The result is our most comfortable rowing suit yet and yes we could argue the most comfortable rowing suit on the market.

ONE-PIECE ROWING SUITS

All Powerhouse Sport Rowing Suits are produced using a 205 gr/sm polyamide microfibre with 30% Elastane. Unique features of this fabric are its compactness, durability, balanced elasticity and greater covering.

The remarkable burst, nervousness, elasticity and power effect features, mark its powerful character, while microfibres grant unique hand feel characteristics, softness and full dull look that together with Interpower treatment, (moisture management property), assure an unrivalled comfort of use. This fabric has a long-lasting finish which wicks perspiration away from the body to the outside for rapid drying. The body stays dry giving the wearer maximum comfort.

Not only has it superior wicking ability, but the fabric used in our suits is also lighter than the heavy, and less stretchy fabric used by many of our competitors - well you wouldn't buy a heavy boat - would you?

Hydrophilic seat - wicks moisture from the skin, all suits have this in the back seat of the shorts - this means an enhanced comfortable fit without bulk or restriction.

Flat-lock seams - where two layers are joined by overlapping and stitching with 6 threads to leave a flat seam.

Since 2005 we have been using dye sublimation to create any customization within the one-piece rowing suit - **the yellow areas above can have ANY DESIGN or COLOUR.** This means that not only are the design possibilities almost unlimited but that we can once again eliminate the bulky seams which were a result of cut and sew techniques.

And for ultimate performance - when races are won by the smallest of margins the smallest of gains are important - and the Bora X-Power Rowing Suit has been proven at the highest level, worn by Olympic and World Champion athletes.



moisture controlling



breathable



flat lock





LEGGINGS & SHORTS

Powerhouse Sport Leggings and Shorts are designed for rowing and produced using a 205 gr/sm polyamide microfibre with 30% Elastane, the same fabric we use for our rowing suits.

With a flat elasticated waistband both leggings and shorts have a higher back, so the waistband sits in the right place when seated and reaching forward during the rowing stroke.

Lightweight and breathable, the shorts also feature a hydrophilic seat panel in the rear which wicks moisture from the skin for an enhanced comfortable fit without bulk or restriction.

Flat-lock seams - where two layers are joined by overlapping and stitching with 6 threads to leave a flat seam.

Leggings are available with or without a 20cm zip at the ankle to make getting them on and off easier.

In addition Powerhouse Sport leggings are available in a choice of fabrics -

Standard - all year round use, produced in fabric described above.

Thermal - for winter use, a heavier fabric, brushed on the inside for heat retention.

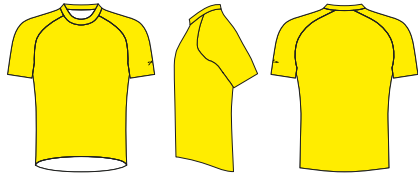
Gym - a tighter knit, 'squatproof' fabric - if you intend using your leggings on their own off-the-water then you might want to consider this option.

All the leggings are customisable to match your club colours - with the yellow area above produced using the dye sublimation process with unlimited design possibilities, from a simple 3cm side stripe through to fully sublimated - let your imagination flow.



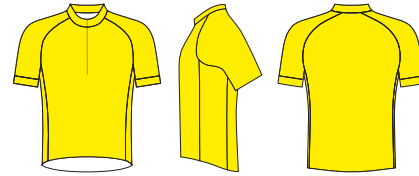
T-Shirt

Fully Customisable



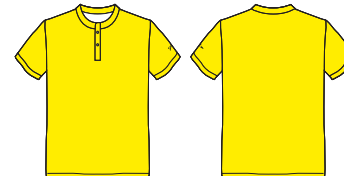
Power T

Fully Customisable



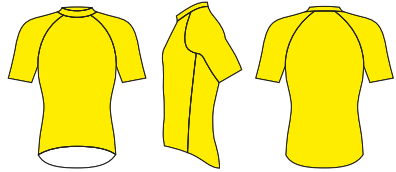
Rowing Zephyr

Fully Customisable



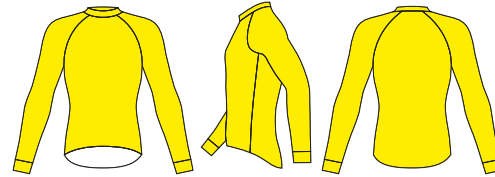
FB17

Fully Customisable



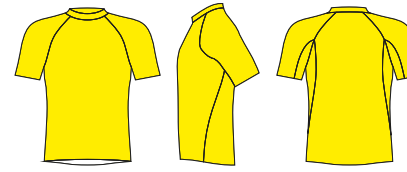
FB17 L/S

Fully Customisable Long Sleeved



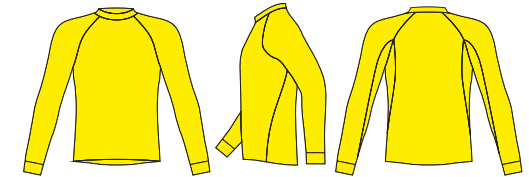
Power Base

Fully Customisable



Power Base L/S

Fully Customisable Long Sleeved



BASE & MID LAYERS

Whatever the climate, whatever your requirement we will have something to suit.

Powerhouse Sport offers a range of Base Layers, from lightweight fitted short sleeve through to thermal long sleeved.

FB17 fully customisable is our most popular and most versatile fitted base layer, available in 2 fabrics

FB17 EPM uses a 140 g/m² stretch fabric which is lightweight and suitable for use all year round.

FB17 LYBR uses a 200g/m² brushed stretch thermal fabric and is perfect as a long sleeved winter base layer.

If you prefer something unique, even a combination of fabrics then we have many other options available, contact us for more details.

POWER BASE is a slightly looser garment produced using fabrics with less stretch

Power Base Thermal - for extreme winter use only, a heavy fabric, brushed on the inside for heat retention.

Power Base Coolplus - a classic fabric, midweight, wicking, great 'all rounder'.

T-SHIRT often called 'competition shirt' is a great option for new members who don't want to invest in all the kit yet but want to display a club identity.

POWER-T think of it as an updated Rowing Zephyr, if you are unsure about wearing a One-piece suit then pair the Power T with a pair of our rowing shorts. Semi-fitted garment with a short zip and produced in 145g/m² Coolplus fabric.

ROWING ZEPHYR is a traditional style rowing garment, loose fitting with a basic open collar and placket with pop fasteners. Often bought as an extra to commemorate a special event.



heat retention



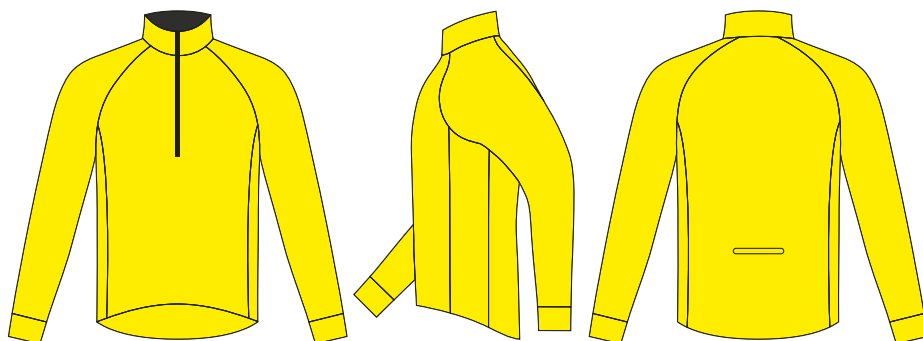
moisture controlling



breathable

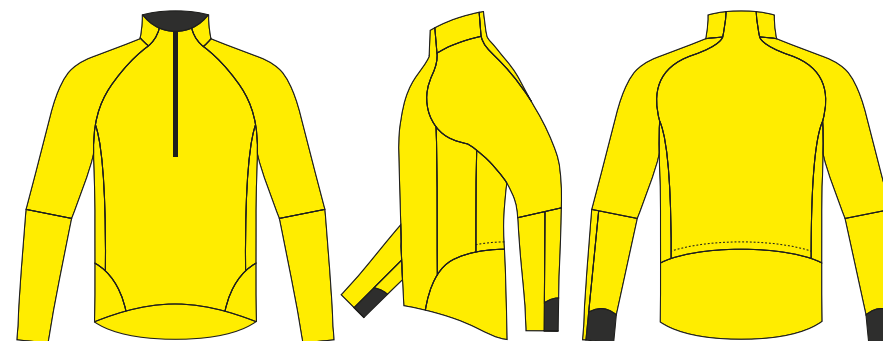
CLUB SPLASH JACKET

Fully Customisable



ELITE SPLASH JACKET

Fully Customisable



JACKETS

Splash Jackets from Powerhouse Sport are available in two fabric options, **WINDBLOC** and **THERMAL** and both can be fully customised to suit your club identity. Available with full length or 1/4 length Zip, all the jackets have a zippered pocket at the rear.

WINDBLOC Fabric -

The Windblock Rowing Jacket uses a 185gm² fabric with a wind and waterproof membrane on the front, back and sleeves. The side panels are made from a lightweight stretch lycra fabric with a nano treatment to repel water. This panel is essential for enhanced breathability allowing you to wear it in the boat - while the wind and waterproof shell fabric protects your body and sleeves from wind and rain.

Ideal for transitional seasons and climates the Windbloc fabric offers protection from rain and prevents the effects of 'wind-chill'.

THERMAL Fabric -

This custom sublimation Rowing Jacket the same windblocking laminate at the core but with a soft fleece interior which keeps you warm and dry.

The fabric provides full stretch with thermal protection.

CLUB SPLASH JACKET is designed for in boat use, the hem is longer at the back, a rear zippered pocket allows you to carry essentials when required.

The cadet collar is designed for extra protection and has a soft inside lining for comfort. The 1/4 zip has an inner storm flap and soft chin guard to further protect against irritation.

The sleeves are long enough to prevent them creeping up the arm when reaching for the catch and the water repelling cuff provides extra comfort.

The membrane at the core of the fabric used in all the jackets is waterproof offering protection from rain and combined with the windblocking characteristic prevents the effects of 'wind-chill'.

ELITE SPLASH JACKET this is a more tailored garment, designed for the serious competitor, with articulation in the sleeves for an enhanced fit, a soft cuff and the whole garment is produced in a stretch fabric with a waterproof/windproof/breathable membrane at the core.



breathable



heat retention



moisture controlling



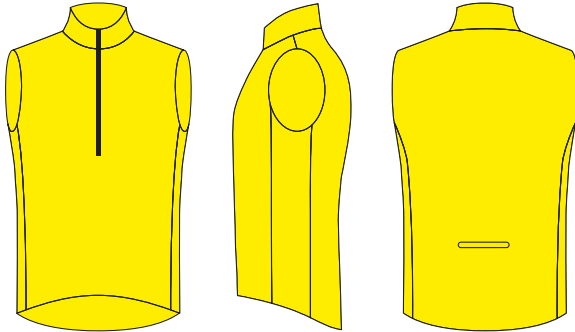
wind repellent



water repellent

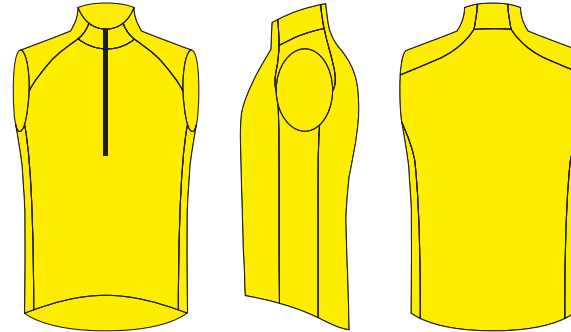
CLUB ROWING GILET

Fully Customisable



ELITE ROWING GILET

Fully Customisable



GILETS

Powerhouse Sport Rowing Gilets offer comfort and performance combined with **unlimited customising potential**.

Constructed using a combination of fabrics to achieve an uncompromised level of comfort this semi-fitted Rowing Gilet is designed for in the boat but still looks great off the water. The curved hem is longer at the back and now features a lightweight binding on the hem with points of silicone to hold it in place without adding bulk.

CLUB ROWING GILET - with a 3-ply laminate thermal fabric on the back which offers protection from the elements - at the core of this fabric is a totally windproof, flexible, waterproof membrane. Inside, the soft fleece layer offers insulation from the cold protecting your back and allowing you to focus on your rowing rather than worrying about the weather. The front panel is made from a lightweight thermal fabric with Lycra on the front of the garment which moves with your body as you compress for the catch. This combination of fabrics provides protection from the wind and water whilst remaining very breathable leaving your body comfortable inside.

A cadet collar which is higher at the back than at the front has a soft inside lining for comfort. The 1/3 zip has an inner storm flap and soft chin guard to further protect against irritation.

A rear zipped pocket allows you to carry essentials when required and optional reflective strips on the rear of the garment give the garment improved visibility.

This garment is best suited for use in weather conditions experienced by rowers based in Northern Europe - of course other combinations of fabrics are available to suit prevailing weather conditions in other areas - contact us for further details.

ELITE ROWING GILET - lighter in weight than the Club Rowing Gilet, the Elite Gilet is produced from a stretch fabric with a wind and waterproof breathable membrane at its core on the front and back.

The side panels are a lightweight stretch lycra fabric with a water repelling nano treatment for enhanced breathability.

The Elite Rowing Gilet has all the other features of the Club Gilet but in a neater fit and a lighter weight.



heat retention



moisture controlling



breathable



wind repellent



water repellent



MIDLAYER



POLY HOODIE

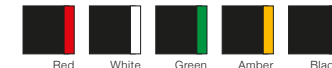


APEX GILET



TRAINING TEE

Black available with the following detail colours -



MIDLAYER



POLY HOODIE



APEX GILET



TRAINING TEE

Navy available with the following detail colours -



OFF WATER

Available in Black or Navy with coloured detail as shown, the Edge Range from Powerhouse Sport is for wearing 'off the water'.

Customisable with your club logo on the front and back (gilet front only) these garments are stylish and durable.

Edge MIDLAYER

- Premium quality 1/4 zip, fleece lined midlayer
- Premium 1/4 zip midlayer
- 220gsm full dull flat knit polyester with antipill fleece reverse
- Contoured arm panel in two tone contrast mesh fabric
- Scooped hem with contrast colour reversed zipper tape
- Signature "Edge" range colour contrast print details
- Perfect for layering up in style

Edge POLY HOODIE

- Premium quality, technical Hoodie
- Ultra warm hooded top
- 260gsm full dull polyester face with heavy brushed back
- Contemporary design front pocket pouch
- Contoured arm panel in two tone contrast mesh fabric
- Signature "Edge" range colour contrast print details
- A forward thinking performance hoodie

Apex GILET

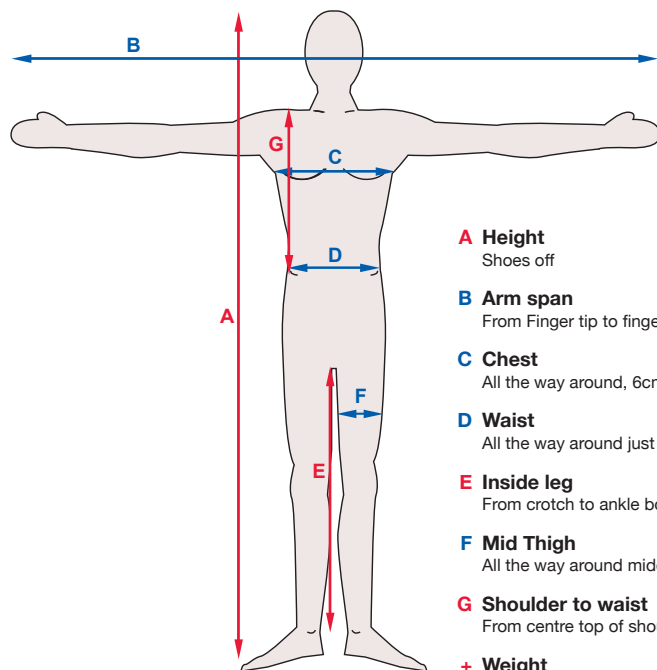
- Lightweight, Stylish, Showerproof Gilet
- Lightweight ultra stylish bodywarmer
- 60gsm hi density downproof miniature polyester ripstop
- Durable water repellent
- 160gsm wadding
- Brushed back polyester stretch side panels
- 2 side pockets
- Modern, versatile mid or outerlayer to keep you warm to the core

Edge TRAINING TEE

- Premium Quality, Performance Fit Technical Tee
- Quick dry moisture management technical tee
- 140gsm ultra soft performance polyester micro knit
- Lightweight
- Scooped hem and contoured side panel
- Performance fit
- Signature "Edge" range colour contrast print details
- A premium quality multipurpose tee

SIZING GUIDE

These measurements are a guide - but please contact us for advice - we are there to help you, by email - sales@powerhousesport.com or call 028 9268 9890



- A Height**
Shoes off
- B Arm span**
From Finger tip to finger tip
- C Chest**
All the way around, 6cm below arms
- D Waist**
All the way around just above hip bone
- E Inside leg**
From crotch to ankle bone
- F Mid Thigh**
All the way around middle of thigh
- G Shoulder to waist**
From centre top of shoulder to waist
- + Weight**

Availability of sizes for all Powerhouse Sport garments

The sizes with a W prefix are women specific sizes

Others are Male or Unisex cut

Sizes	XS	S	M	L	XL	XXL	3XL	WXS	WS	WM	WL	WXL
One-piece Suit	■	■	■	■	■	■		■	■	■	■	■
Leggings/Shorts		■	■	■	■	■		■	■	■	■	■
FB17	■	■	■	■	■	■						
T-Shirt/Zephyr/PowerT	■	■	■	■	■	■	■	■	■	■	■	■
Rowing Gilet	■	■	■	■	■	■	■	■	■	■	■	■
Splash Jacket	■	■	■	■	■	■	■					

ROWING SUITS | LEGGINGS | SHORTS | ROWING GILET

	MS	MM	ML	MXL	MXXL
To Suit Height	5'1"-5'5"	5'6"-5'10"	5'10"-6'1"	6'1"-6'3"	6'3"-6'5"
Chest	36"	38"	40"	42"	44"
Waist	28-30"	30-32"	32-34"	34-36"	36-38"
Inside Leg	28"	30"	32"	34"	36"
Approx. Weight	50-60kg	60-70kg	70-75kg	75-85kg	85kg+

Size	WXS	WS	WM	WL	WXL
Suit Height	4'11"-5'1"	5'1"-5'6"	5'6"-5'8"	5'8"-5'11"	5'11"-6'1"
Chest Inches (to fit)	30-32"	32-34"	34-36"	36-38"	38-40"
Waist	22-24"	24-26"	26-28"	28-30"	30-32"
Inside Leg	25"	26"	28"	30"	32"
Approx. UK size	8	10-12	12-14	14-16	16-18

POWER T

	MS	MM	ML	MXL	MXXL
To Suit Height	5'1"-5'5"	5'6"-5'10"	5'10"-6'1"	6'1"-6'3"	6'3"-6'5"
To Suit Chest	36"	38"	40"	42"	44"
Actual measurement 2.5" below arms	36"	38"	40"	42"	44"

Size	WXS	WS	WM	WL	WXL
Suit Height	4'11"-5'1"	5'1"-5'6"	5'6"-5'8"	5'8"-5'11"	5'11"-6'1"
To Suit Chest	30-32"	32-34"	34-36"	36-38"	38-40"
Actual measurement 2.5" below arms	32"	34"	36"	38"	40"

SPLASH JACKET

	XS	S	M	L	XL	XXL	3XL
To Suit Chest	34"	36"	38"	40"	42"	44"	46"
Actual Chest	36"	38"	40"	42"	44"	46"	48"
Front Length	19"	20"	21"	22"	23"	24"	24"
Sleeve Length	31"	32"	33"	34"	36"	37"	37"

FB17 | ZEPHYR | T-SHIRT | POWER BASE

Size	S	M	L	XL	XXL
To Suit Chest	36"	38"	40"	42"	44"

EDGE

International Size	SY	MY	LY	XLY	S	M	L	XL	XXL	3XL
Years	8/9	10/11	12/13							
Chest Inches (to fit)	26/28	28/30	30/32	32/34	34/36	38/40	42/44	46/48	48/50	50/52
Chest cm (to fit)	66/71	71/76	76/81	81/86	86/91	97/102	107/112	117/122	122/127	127/132
Vatable	No	No	No	No	Yes	Yes	Yes	Yes	Yes	Yes

CHOOSE POWERHOUSE

We hope this catalogue will help you make the right decision to choose Powerhouse Sport to be your clothing partner.

Please contact us -
sales@powerhousesport.com
+44 28 9268 9890

We are here to help and more than happy to discuss your requirements for the seasons ahead in detail.

Yours,
Ali and Garth
Founders, Powerhouse Sport

powerhouse
sport 

