

# SENSE TILE

Fixed all in one ceiling mounted  
interactive projector

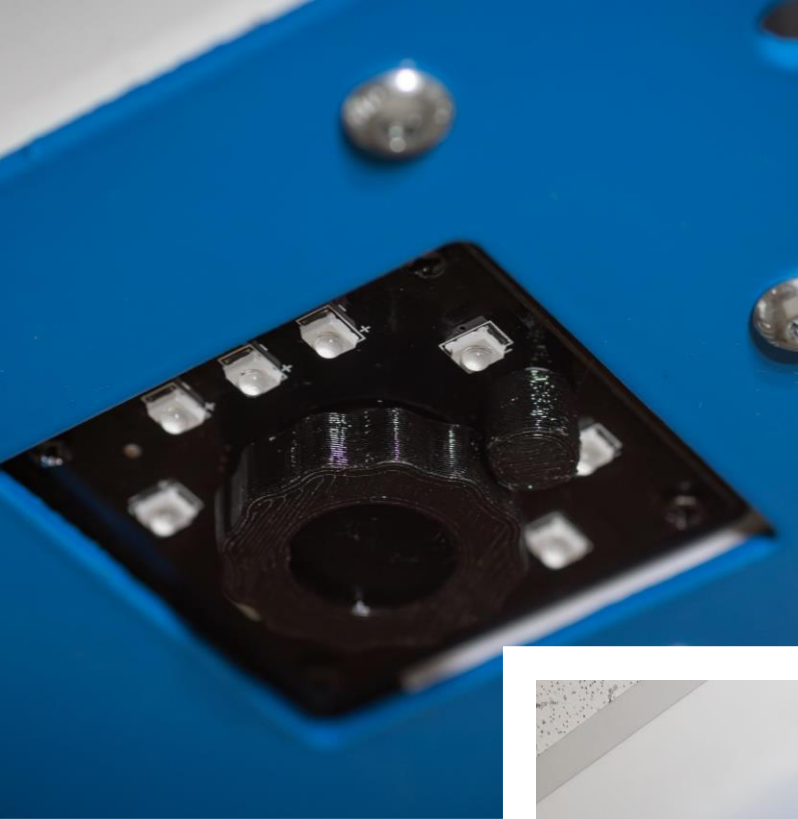


- ▶ The SENSE Tile is the latest in the SENSE range, an effortless installation which can be used in any setting.
- ▶ Simply replace the ceiling tile in an existing suspended ceiling grid, connect the mains and your interactive projection system is ready to go. (please enquire if you don't have a suspended ceiling so we can advise if this product can still be used)
- ▶ The SENSE Tile will project bright, engaging interactive content on the floor or any other surface such as a table if positioned under the SENSE Tile.

Imagine for SEN environments, education establishments, hospitals, home use and children's areas

Wellbeing Suite- For use within Dementia care, Adults and older care establishments

- ▶ Imagine software comes preinstalled and ready to use, there are over 350+ activities for you to use plus the ability to create your own through our editor portal \*
- ▶ Wellbeing Suite- 100 + targeted activities to cover objectives such as Social, physical and mental wellbeing as well as maintaining cognitive and physical health.



- ▶ Fixed all in one unit designed to replace a ceiling tile in a suspended ceiling grid.
- ▶ The SENSE Tile is pre installed with Imagine software
- ▶ Easy to install design
- ▶ Large, bright interactive projection on the floor with speakers and amp
- ▶ Projection size (dependant on installation height) Approx. 2.6m x 1.7m installed at a height of 2.5m

# Imaginate Software



Simple to use Interactive software for  
Interactive projection and rooms



Includes over 300 premade activities



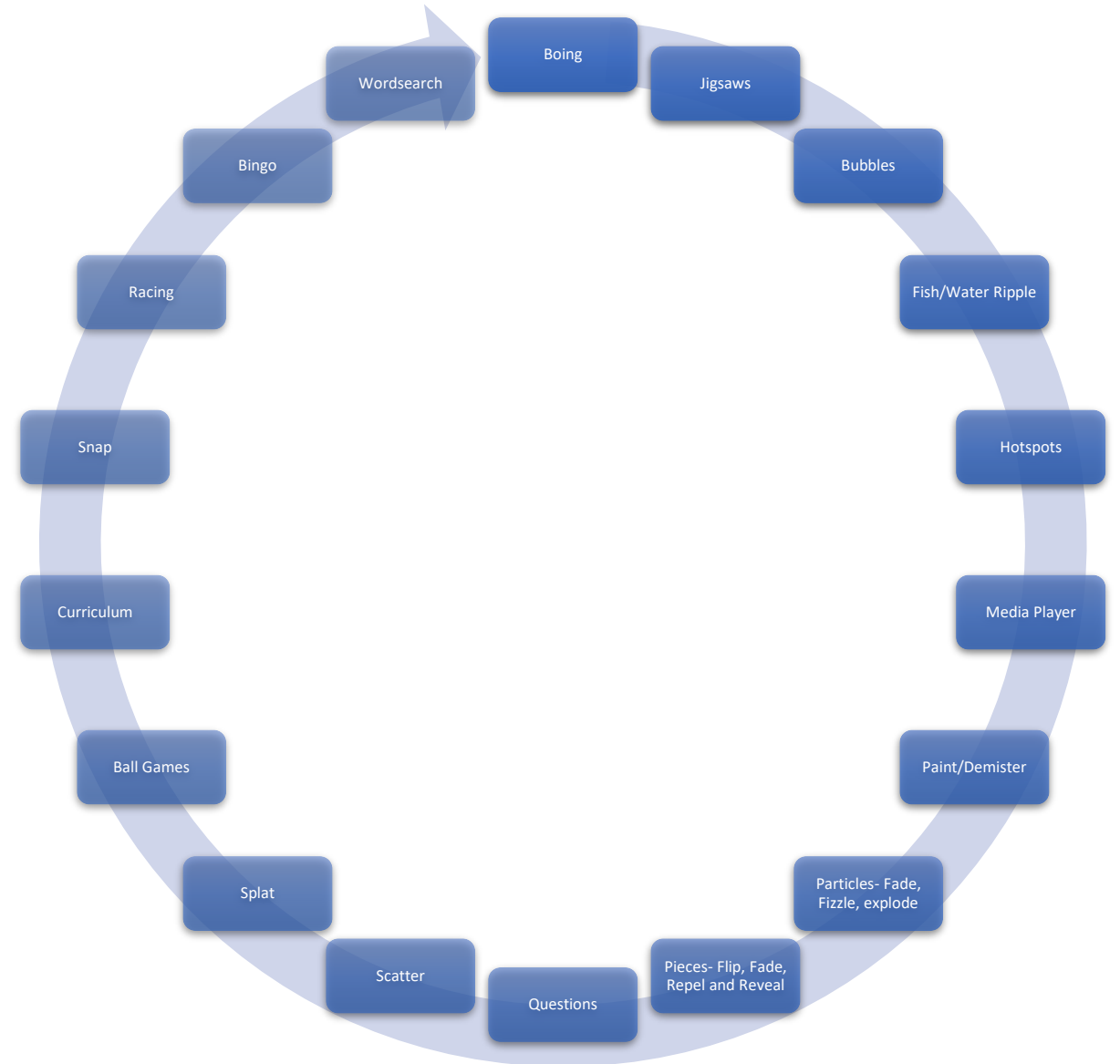
Import your own images, videos and audio  
and create your own interactive activities



Cloud based remote editor- create  
activities from any device anywhere



# Activity categories





# Questions

Create more educational content with the questions theme or engage the user with a general knowledge quiz\*

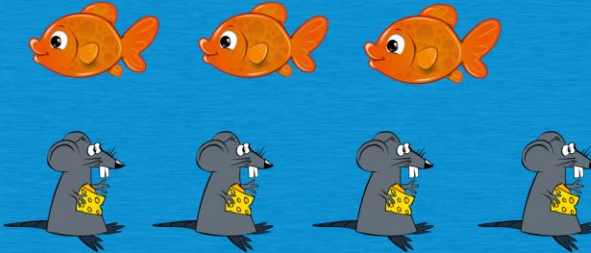
\*cloud editor subscription required to create questions activities that are not included as standard

Import your own images, videos and audio to help with creation of educational quizzes or use the library of multimedia included with the imagine software.

Ideal for use in an educational environment or for entertainment


Counting

More or less- Are there more or less fish then mice?



More Less

Dividing



Share these balls into groups of 2, what is the missing number?

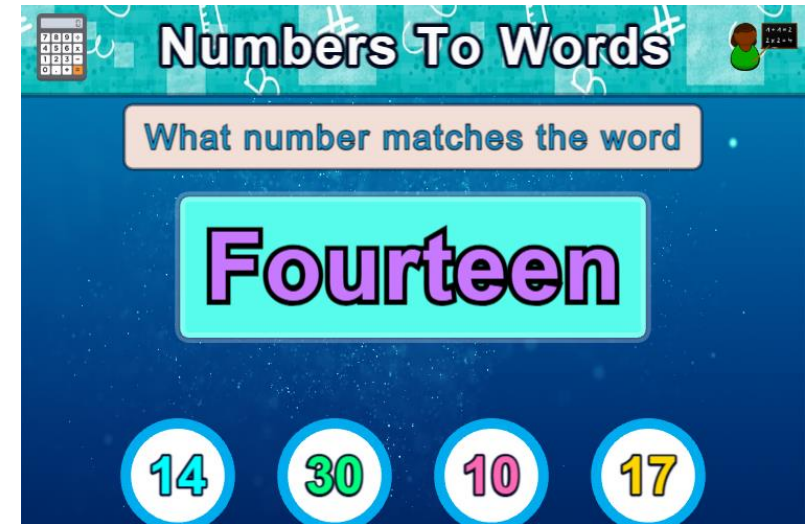
6 ÷ 2 =

6 3 2

# Curriculum

Maths and phonics Year 1 and year 2 activities have been created for you. A range of questions covering various key stage 1 and 2 activities ready to interact with

In the cloud editor you can select the range of numbers to use in the maths activities as well as the number of questions in each set



# Scatter

Encourage movement with the scatter theme

Pick the item you want to scatter with the theme packs available

Scatter the objects to see the image underneath. Use a brush to scatter the leaves across the surface





# Particles

Encourage movement with the Particles theme

Pick the item you want the particle to be from the theme packs available

As you interact with the image the selected particle will appear on the screen and either fizzle, fade or explode dependant on what mode you chose when creating the activity



# Fish/Water Ripple

Create a calming experience and improve mood with the water ripple

Stand or touch the pond and the fish will swim towards you or away from you and the water will ripple around your touch.

Water ripple can be with or without the fish





# Hotspots

Create more educational content with the hotspot theme. Create a hotspot within an image or video and when the user touches that area another action is triggered.

Stand on the planets and the system will pop up with a text box and the name of that planet, the system will also read the text aloud.



# Splat

Encourage movement with the splat theme

Pick the item you want to splat with the theme packs available

Choose the image or video in the background and music to play while you happily splat away

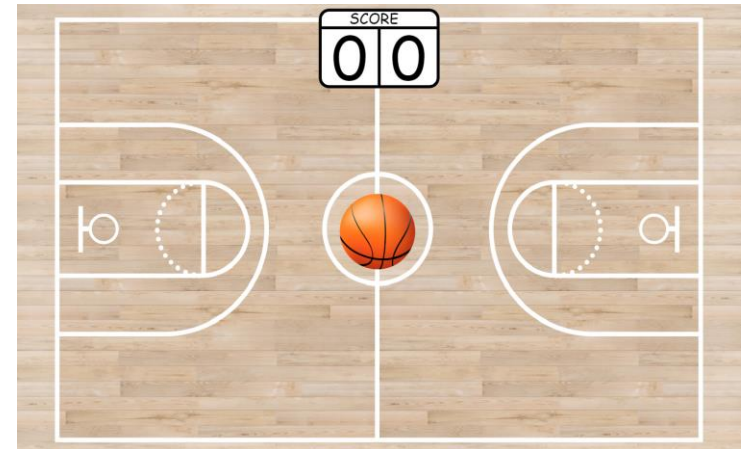
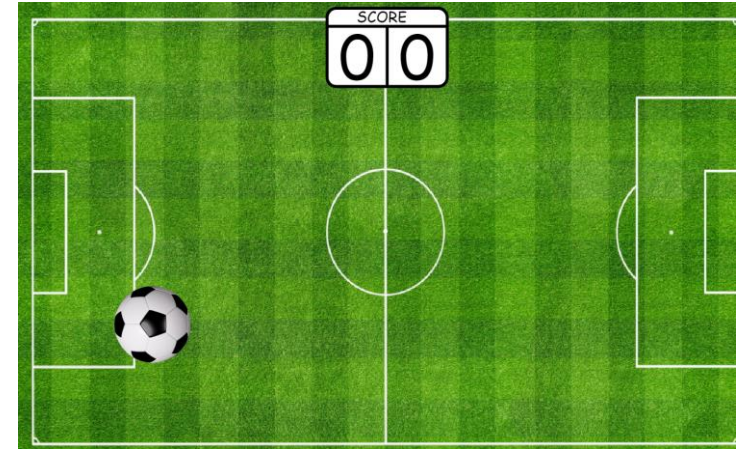




# Ball games

Choose from Football, Basketball, Air Hockey and tennis

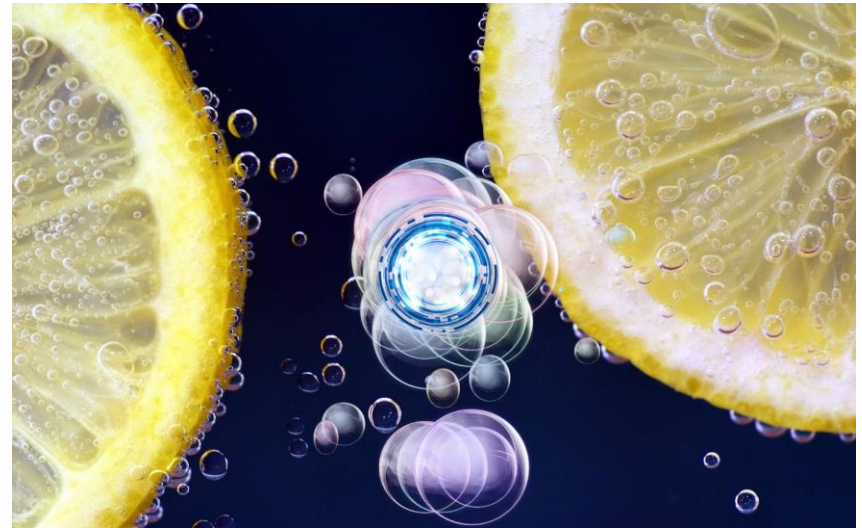
The ball game activity provides entertainment and encourages movement and social interaction



# Bubbles

What's more relaxing than popping bubbles?

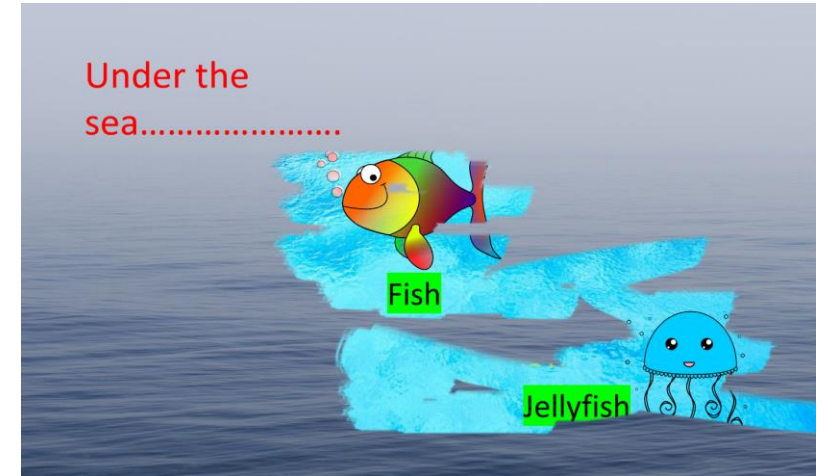
The bubble pop theme creates a bubble pop interaction over a customer image



# Image Painter/Demister

The image painter activity is great for providing sensory responses and Interaction

Colour in the black and white image with a hand a foot or even a paint brush. This activity can also be used to wipe away one image to reveal another, this can be used for reminiscence and Nostalgia start with an image from days gone by and reveal the here and now, or an educational tool what would you see under the water?





# Boing

Hit the objects around the projection area

Choose the object from the theme pack, encourages movement, co-ordination and stretching.

Sensory cause and effect





# Pieces- Flip/Fade/Reveal

Reveal one image under another

Choose which effect will happen when the interactive pieces move from flip, fade or reveal . Can be used for cause and effect or education, for example wipe over the image of the fire engine to reveal the fire fighter





# Cloud editor/Profiles



Login to the remote editor from any device anywhere



Create content away from the machine



Create profiles away from the machine



Create login for additional users so others can create activities and profiles.



Import images, videos and audio to create custom activities



Remote support for imagine software is included while the subscription is live