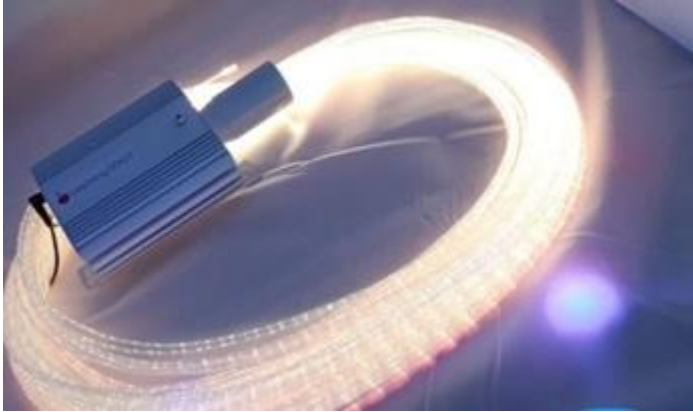




learning space

Thank You for choosing a Connect Pro Light Source & Fibre Optic Harness



Remember:

Your fibre optics are from the unique 'Build as you go' Connect Pro Sensory range.

You can build your interactive sensory room using Connect Pro Sensory range where every piece of equipment can change colour at the same time when used with an Oval Controller, Cube Controller or Tablet Controller (available late 2020). Have fun building up your sensory room stage by stage over time knowing that they will work together when selecting Connect Pro range.

The following instructions explain how to set up, use, and maintain your new light source.

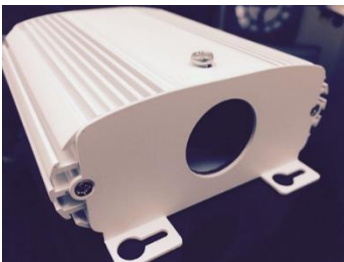
In the box you will have received:

- 1 x Light Source
- 1 x Power adapter with UK, American, European and Australian plugs
- 1 x Fibre Optic Harness

Set Up Instructions:

Step 1:

Carefully remove the Light Source and Fibre Optic Harness from the packaging.



Telephone: 02890 319360

Email: admin@learningspaceuk.co.uk



Step 2:

- 2.1 Insert the Fibre Optic metal end into the large hole at the front of the Light Source. Before doing so, check that the securing screw is sufficiently unscrewed to allow the Fibre Optic Harness to enter.
- 2.2 Ensure that the Fibre Optic Harness is pushed fully in, as shown in the photo. You may need to wiggle it as you push, to ensure that it goes through the 2 securing rings inside the Light Source.



- 2.3 Tighten the top screw to secure the Fibre Optic Harness in place.

Step 3:

Unpack the power adapter from its cardboard box and plastic bag. Fit the appropriate country plug pins by clipping the desired pins onto the adapter.

Do this by first hooking one side of the pin adapter into the adapter and then pushing the other side home until it clicks into place.

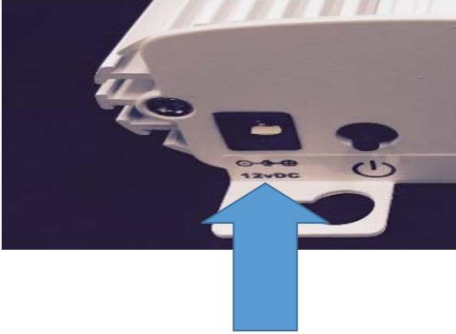




learning space

Step 4:

Connect the power adapter wire to the back of the Light Source.

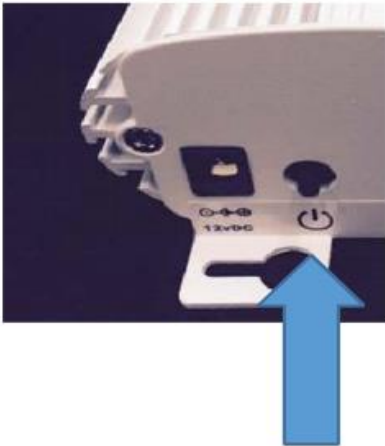


Step 5:

Plug the power adapter into the wall and switch on the power.

Step 6:

Switch on the Light Source.

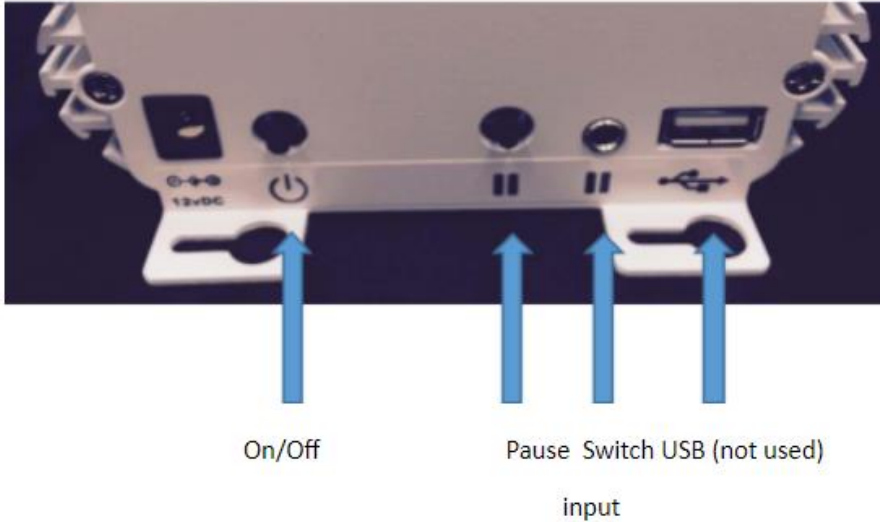


Telephone: 02890 319360

Email: admin@learningspaceuk.co.uk



OPERATION:



On/Off: Use this button to turn the Light Source On and Off.

Pause: Press to stop the colour cycling. Press again to restart.

Switch Input: Same functionality as the Pause button, except by using an external switch with a 3.5mm jack plug (not supplied).

SAFETY INFORMATION:

- For use indoors, in a dry environment.
- Never attempt to open the Light Source. It contains sensitive electronics.
- Ensure that the Light Source is placed in a well-ventilated area and not under or behind cushions or soft furnishings. The unit will get warm and requires air around it.
- Refrain from inserting anything except the Fibre Optic Harness into the large hole in the front of the unit.
- Only use the power adapter supplied with the unit.

ELECTRICAL INFORMATION:

Power adapter:

- Mains input voltage (power adapter) 100-240Vac 50/60HZ
- Input current 0.6A
- Adapter output 12V 1.25A (15Watt)
- Approvals: CE, UL, CUL

Light Source

- Input voltage 12V
- LED output power 9W
- Approval: CE – ROHS

