

EU Type Examination Certificate

Date: 2021/04/14

n. **549211501/OE**

Validity:
2026/04/13

The hereunder described items of Personal Protective Equipment have overcome positively the "EU type examination" (Module B), proving their conformity to the safety and health requirements of the Regulation (EU) 2016/425 (Annex II)

Manufacturer: **ATLAS BRACE TECHNOLOGIES INC.**
(Responsible of the PPE) #107 - 19155 38th Avenue, Surrey – British Columbia V3Z 0Y6 - CANADA.

Type of PPE: **Neck protector for use by motorcyclists.**

Category of PPE: **II** : "medium" risks.
This certificate is based on reference standards listed below: its validity is no longer ensured should new version of the standards come into force.

Model **"VISION" = VC1-01/07-xx**
2 colourways (*)

Description: Atlas Vision materials



Part	Description
Plastic (All)	Hi Impact PP
Release system	6061 T6 Aluminum/POM/Steel spring
Foam padding (All)	D3O/Loop fabric laminate
Rear Tether	NBR rubber
Tether Bolts	Plated Steel
Velcro	Hook velcro with adhesive
Threaded inserts	Stainless steel
Strap Clip Mounts	Steel
Chest Strap	Elastic/Nylon
Graphics	Water Decal

(*) The neck brace is also available in the following colourways:

BLACK/BLACK codes VC1-01-010 + VC1-01-020;

GREY/ORANGE codes VC1-07-010 + VC1-07-020

- See also pictures on page 2.

Technical Standard: **me-int. 088 rev.11**
(incorporating also me-int. 074-00) Based on partial application of:
EN ISO 13688:2013 + A1:2020 + EN 1621-2:2014 (neck-brace).



EU Type Examination Certificate

Date: 2021/04/14

n. **549211501/OE**

Validity:
2026/04/13

Intended use:	for motorcycle or motocross activities – to be used only in conjunction with a compatible full-face helmet –to give limited protection against axial loading (spinal column compression) only.
Size range:	SM/MD: 84-100cm chest-girth – LG/XL: 100-114cm chest-girth
Technical File:	DC-12920
Test report:	RCT n° 4010608/E
Functions and performance levels:	To reduce the severity of traumas caused by impacts, the protectors provide limited protection against mechanical impact, in particular axial loading (spinal loading compression) in case of falls: Method: "Kerbstone" impact testing at 50J with ref. to EN 1621-2 requirements (analogous method). - Obtained values of transmitted force (MAX requirement: ≤ 18 kN) = PASS ; - all other tests (among which: impact resistance of the quick release system, resistance to conditioning at 70°C/4 h, tensile strength, resistance to lateral displacement, ergonomics, information sheet): PASS . NOTE: The protective functions also depend on the correct positioning/adjusting of the protector (in particular on a correct connection with the other protective devices, such as chest/back protectors and helmet) which is not part of this assessment.

Marking: printed on indelible + not-removable stickers and on labels affixed to the visible face of the lining – used in conjunction they include the following information:

 DESIGNED IN CANADA
 ASSEMBLED IN TAIWAN
 ATLASBRACE.COM
 INFO@ATLASBRACE.COM
 604 542 3596

PATENTS PENDING

CAT. II - 2ND CAT. P.P.E IN ACCORDANCE WITH EU REGULATION 2016/425



- **CE Marking:**
- Trademark and Logo of the Manufacturer;
- Univocal designation of the P.P.E. article name (each variant has an article code starting with the indication of the Quarter + Year of the production + code of the "family" or series of article + code referring to the color/size)
- indication of the main material components;
- WARNING! Label for the EMERGENCY REMOVAL;
- "designed /assembled" infos + contacts (web – phone – email) + full infos about: CAT.II + EU-Regulation 2016/425;
- sizing label (chest-girth vs international sizes table); etc.

See also next page:



EU Type Examination Certificate

Date: 2021/04/14

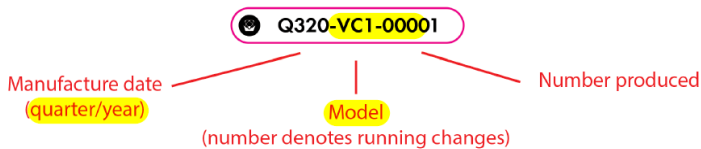
n. **549211501/OE**

Validity:
2026/04/13

CE-Marking + Manufacturer's identification:



product identification:



Size indication:

SIZE	CHEST SIZE	ATLAS VISION		ATLAS AIR		
		SM/MD	LG/XL	SM	MD	LG
SM/MD	33-40" (84-100cm)					
LG/XL	40-45" (100-114cm)					

DESIGNED IN CANADA ASSEMBLED IN TAIWAN | CE | WWW.ATLASBRACE.COM/SIZING TM & © ATLAS BRACE TECHNOLOGIES, INC

atlasbrace.com/user-manuals

BLACK/BLACK
VC1-01-xx



GREY/ORANGE
VC1-07-xx



EMERGENCY REMOVAL/ QUICK RELEASE:



NOTE: the Technical File contains a more detailed description of the PPE (material, method of assembly, photographs or drawings), performance data, safety functions and level of protection, elements of conformity to the basic and supplementary requirements. The Technical File is integral part of the present Certification, which has to be kept available by the applicant to be forwarded - upon request - to the entitled person (supervising body, Controlling Officer).

