

LOW VOLTAGE, CASAMBI ENABLED CEILING OCCUPANCY SENSOR LARGE, PASSIVE INFRARED (PIR)



CODE: OS-LV-CM-CB-PI-CPL

FEATURES

- Digital Passive Infrared (PIR) Detection
- 360° Coverage Patterns
- Large Motion Detection (~2000 ft2 of coverage)
- Wirelessly Communicates on Casambi Bluetooth Mesh Networks
- Four Contractor Friendly Mounting Methods
- Mounting Nipple Attachment with Integrated Hole Saw

SPECIFICATIONS

ELECTRICAL

OPERATING VOLTAGE
12-24 VAC/VDC

CURRENT DRAW
15mA

WIRELESS (CASAMBI) RANGE

Up to 150' w/o obstructions

FREQUENCY / STANDARD
2.4 MHz / Bluetooth 4.0

WIRELESS PAIRING
Configured in Casambi app.

PHYSICAL

SIZE:
4.00" Diameter x 1.25" H
(10.16 x 3.17 cm)

WEIGHT: 4.75 oz.

ENVIRONMENTAL

OPERATING TEMP
32°F to 122°F (0°C to 50°C)

RELATIVE HUMIDITY
0-95% Non-Condensing,
Indoor Use Only

OVERVIEW

Suitable for a range of spaces with finished ceilings (e.g., tiles, sheetrock, and plaster). Features the latest passive infrared technology and digital signal processing techniques to provide unmatched detection performance.

Sensors detect movement in the infrared energy that radiates from occupants as they move within the devices field-of-view. Changes in the occupancy status of the sensor are wirelessly communicated over the Casambi bluetooth mesh network to Casambi enabled fixtures and load controllers in order to turn on lighting. All time delays and operational modes are maintained by the load controller(s) and configured with the Casambi App (available for iOS and Android devices)

APPLICATIONS

A single sensor may provide sufficient coverage in many spaces, however, multiple low voltage sensors can be easily wired together to provide improved coverage for large or irregular shaped spaces.

- Classrooms
- Open Areas
- Conference Rooms
- Hallways & Corridors
- Large Offices
- and more

CASAMBI

ACCESSORIES:

OSA-T-CM Ceiling Sensor Trim Ring for Mounting to Single Gang Mudring, Handy Box, or 4" Octagon Box.

Requires power pack sold separately.

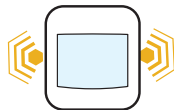


APPLICATION DIAGRAM

CASAMBI - ENABLED FIXTURES



CASAMBI-ENABLED
SENSOR



CASAMBI - ENABLED FIXTURES



COVERAGE

PASSIVE INFRARED (PIR)

8 to 15 ft (2.44 to 4.57 m) mounting height recommended for small and large motion lenses.
Detection range improves when walking across beams as compared to into beams
Lenses can be swapped in field if necessary, contact technical support for assistance

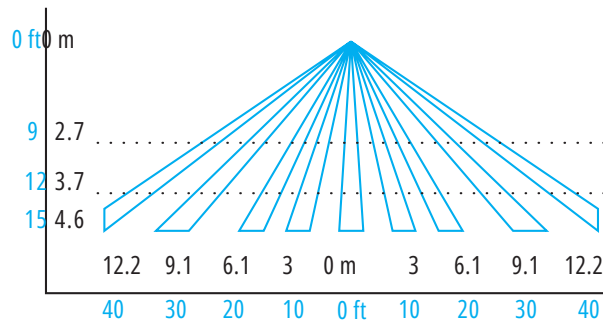
LARGE MOTION 360°

Best choice for detection of larger motion (e.g., walking)

~2000 ft² of coverage

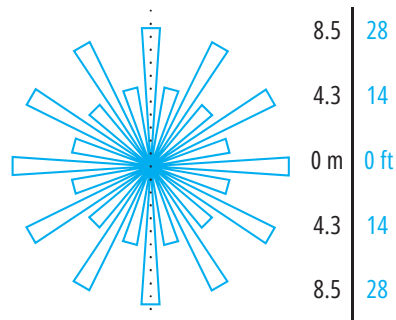
One of the longer segments of the coverage pattern aligns with the screw hole axis on the sensor (shown as dotted line on Top View diagram below)

SIDE VIEW

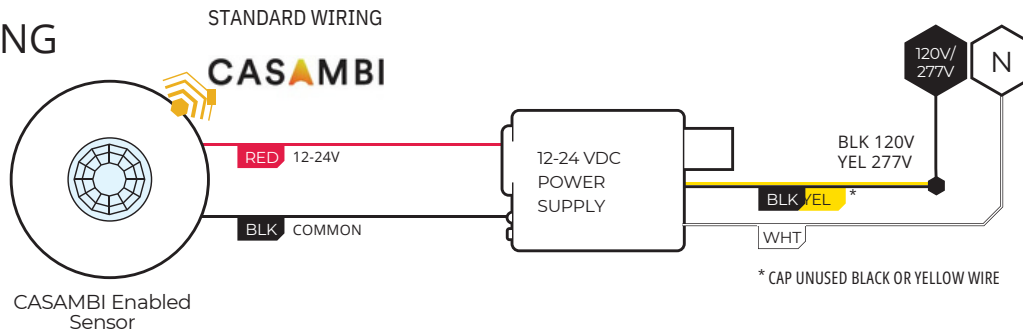


TOP VIEW

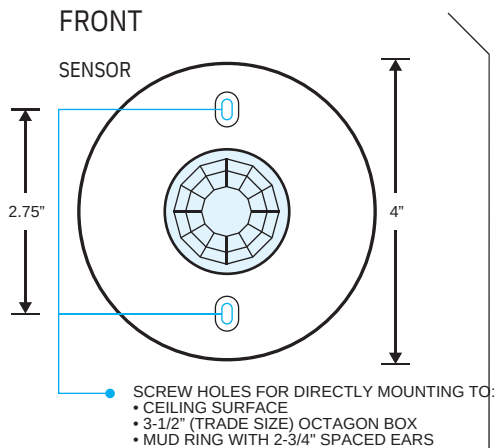
9 ft Mount



WIRING

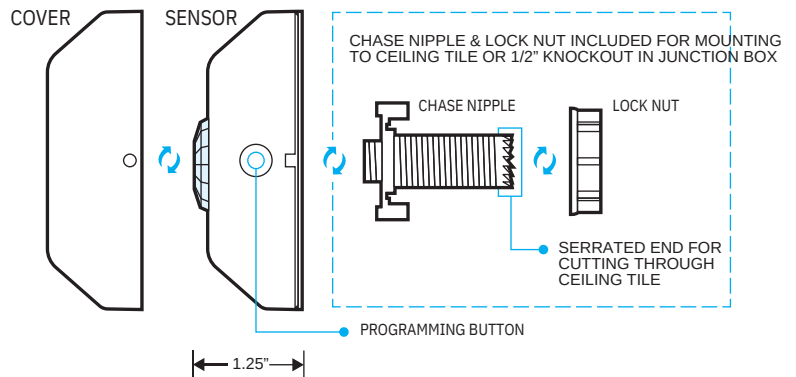


INSTALLATION OPTIONS



Note: If mounting to a Single Gang Mudring, Handy Box, or 4" Octagon Box, a trim ring is required.

SIDE



ADDITIONAL MOUNTING OPTIONS USING TRIM RING

