



EV WALL CHARGER

Model : WS1 - User Manual

Before operating this product, please read the enclosed Operating Instructions completely

▲ INSTRUCTIONS PERTAINING TO A RISK OF FIRE OR ELECTRIC SHOCK

IMPORTANT SAFETY INSTRUCTIONS

WARNING :

When using electric products, basic precautions should always be followed, including the following. This manual contains important instructions for Models WS1 that shall be followed during installation, operation and maintenance of the unit.

a)Read all the instructions before using this product.

b)This device should be supervised when used around children.

c)Do not put fingers into the electric vehicle connector.

d)Do not use this product if the flexible power cord or EV cable is frayed, has broken insulation, or any other signs of damage.

e)Do not use this product if the enclosure or the EV connector is broken, cracked, open, or shows any other indication of damage.

f)Caution - To reduce the risk of fire, connect only to a circuit provided with 60amperes maximum branch circuit over- current protection in accordance with the NEC.

g)This product must be grounded. If it should malfunction or break down,grounding provides a path of least resistance for electric current to reduce the risk of electric shock. The power cord for this product has an equipment grounding conductor and a grounding terminal. The terminals must be connected to the corresponding correct port and must be properly installed and grounded in accordance with all local codes and ordinances.

h)WARNING - Improper connection of the equipment-grounding conductor is able to result in a risk of electric shock. Check with a qualified electrician or serviceman if you are in doubt as to whether the product is properly grounded.Do not modify the terminals supplied with the product - If the terminals do not match the electrical box, have a qualified electrician install a suitable outlet.

SAVE THESE INSTRUCTIONS

Before the operation, please read the operation manual carefully to know the equipment and the correct method of use. Please keep it for future reference.

1. Before installation, please check the grid for the Level II 240 v ~ ±10% (60 Hz) ". Otherwise unable to use it.

2. Do not use flammable, explosive, or combustible materials, chemicals, combustible gas and other dangerous goods near the charging pile.

3. Keep dry and clean on the charging point. If there is any dirt, please use a clean, dry cloth to wipe it. It is forbidden to touch the point pin.

4. Hybrid car, please recharge again after flame-out. In the process of charging, vehicle driving is prohibited.

5. Children do not get close to the process of charging so as not to cause harm.

6. In case of rain, thunder, or weather, be a cautious charge, please. It is strictly prohibited that the charging cable breaks, wear and tear, charging cable nudity, charging pile has obviously been knocked down, damaged, etc. If the charging post is used, please stay away from the charging post immediately and contact the staff.

7. If there is a fire in the process of charging electric shock and other abnormal situation occurs, immediately press the stop button to ensure personal safety.

8. Please do not try to remove, maintain, or modify the charging pile. Improper use may cause damage, leakage, and so on and so forth.

▲ PRODUCT INTRODUCTION

1.Product Introduction

EV AC charging pile is designed for the pain points of the charging pile industry. It has the characteristics of convenient installation and debugging, simple operation and maintenance, accurate measurement, perfect protection function, etc., with good compatibility, and meets the charging requirements of the SAE J1772 standard.

This AC pile protection grade Type 4, with good dust-proof, waterproof functions, can be safe indoor and outdoor operation.

2.Product Parameters

| | |
|------------------------|---|
| Type no. | EV-WS1 |
| Input voltage | Level II 240V~±10% (60Hz) |
| Output voltage | Level II 240V~±10% (60Hz) |
| Power output | 12 KW |
| Maximum output current | 50A |
| Class of protection | NEMA Type 4 |
| Protection Function | Over / under voltage protection, over current protection, Current leakage protection(CCID20), grounding detection protection, emergency stop protection |
| Indicator light | Standby - blue on ; Charging - green blinking ; Alarm - red on |
| Indication of status | 4.3-inch |
| Mode of charging | Swipe card charging / APP charging / Appointment charging |
| Charging interface | SAE J1772 |
| Material of case | PC+ABS |
| Operating temperature | -30 ℃~50 ℃ |
| Storage temperature | -40 ℃~80 ℃ |
| Relative humidity | 5% to 95% no condensation |
| Overall dimensions | 333*213*92mm(H*W*D) |

▲ PRODUCT OVERVIEW



▲ INSTALLATION INSTRUCTION

List of Parts

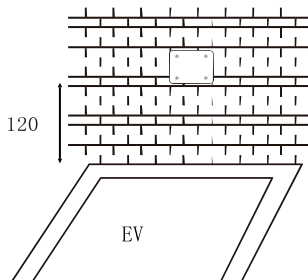
| General purpose accessories | | |
|-----------------------------|----------------------------|--------|
| Product specification | Ac pile instruction manual | 1 copy |
| RFID card | M1 card | 2 pcs |
| Wall mount installation | | |
| Expansion screw | M8*60 expansion screw | 4pcs |
| Wall hanging fixed plate | Mounting the chassis | 1 pc |
| Expansion screw | M6*40 expansion screw | 3 pcs |
| Charging cable hook | Plastic hook | 1pc |

1.The installation method is wall hanging

a.Take out the mounting plate of the charging pile at the bottom of the device, and carefully check the mounting size of the screw holes.

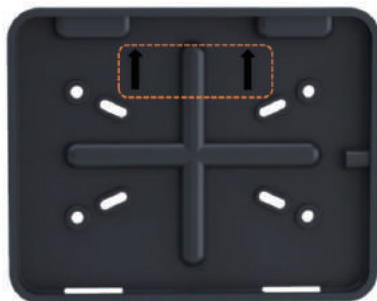
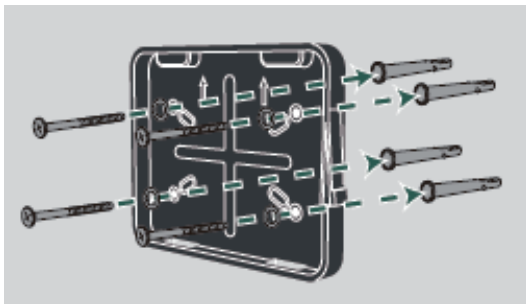


b.Select the parking space where the charging pile is to be installed. The lowest position of the fixing plate of the charging pile should be 120cm above the ground.

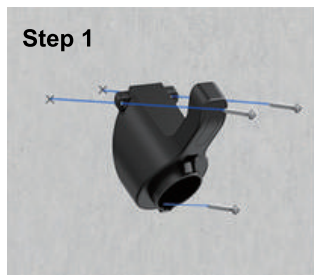


c. Drill four M8 diameter holes according to the positions of the screw holes in the fixing disk, knock in the expansion rubber plugs, and secure the mounting disk with nuts on the fixing chassis.

Fix the bottom plate on the wall or support (pay attention to the installation direction, Installation in the direction of the arrow)



d. For charging gun/cable storage bracket, please refer to the following installation



Step 1

Drawing of fixing holes



Step 2

Drilling with tools

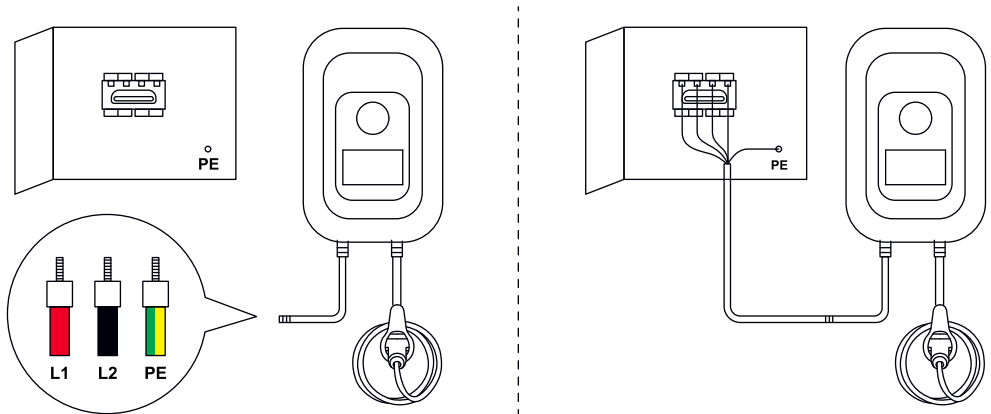


Step 3

Insert the expansion tube and screw it in

2.Wire Connection Instructions

A power distribution box is used , the L(Red) L(Black) PE (Green&Yellow) ends of the input cable of the plug correspond to the L1,L2 and PE ends of the circuit breaker respectively



3.Hang the charging pile on the bottom plate , charger gun cord hang on the plastic hook

120cm / 47.24inch



▲ MOBILE PHONE APP CHARGING OPERATING INSTRUCTIONS

1. APP download and binding use

a. To download the smart APP, enter the following address in the mobile browser:
<https://developer.tuya.com/cn/docs/iot/tuya-smart-app-smart-life-app-advantages?id=K989rqa49rluq>

Click the website and follow the prompts to install.



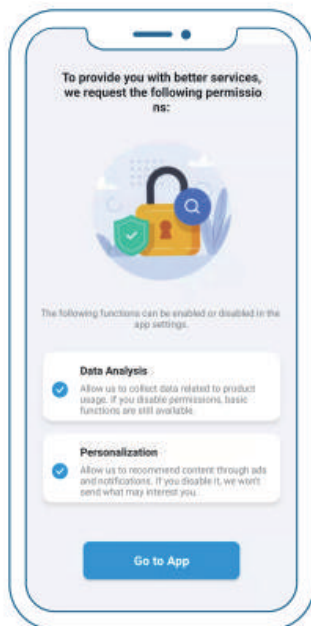
b. Qr code download :

Open the mobile browser or other social software, scan the QR code, and follow the APP according to the prompts.

2.Binding and Using Devices

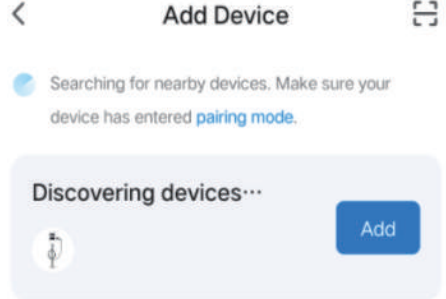
Step1:

Open the installed APP, click Agree privacy Statement, you can register with your mobile phone number, social software binding registration, and log in to the APP after a successful registration. Open the Location, Bluetooth, and WIFI of the mobile phone. If the charging device is in standby state, the APP will automatically search for the charging device and the device name will be displayed.

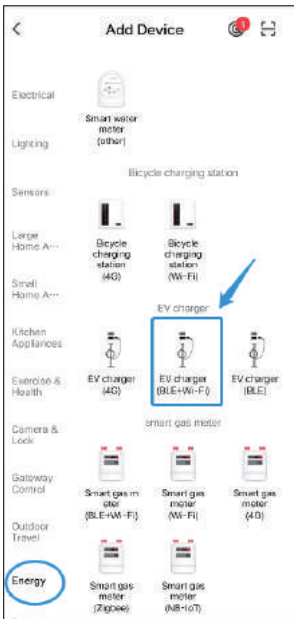


Step 2:

Click "Add device", enter the WIFI pairing interface, automatically identify the WIFI name of the phone. Click Next, and the device will be automatically bound. After the binding is successful, a message will be displayed indicating that the device has been successfully added. Finally, click the icon of "Finish" and wait about 5 seconds for the device to be bound.

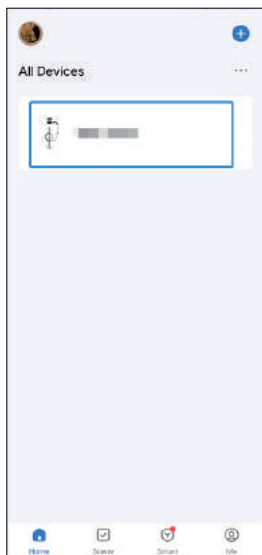
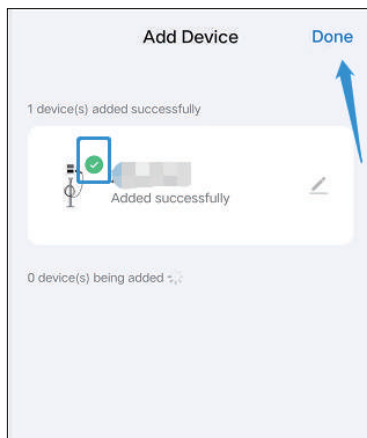
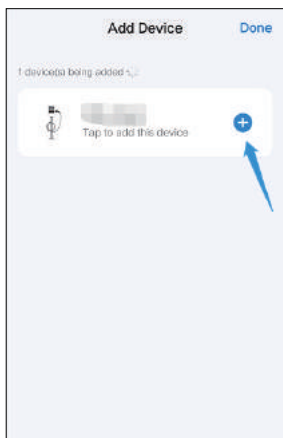
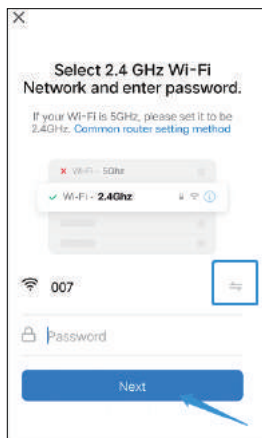


You can also click "+" in the upper right corner of the APP to manually add the device, select the category of "Energy" in the left column, pull up the device type, find the device "Car charging pile (Bluetooth + WIFI)", Click to enter, then follow the prompts and click on "Confirm if the indicator light is flashing", then click on "Quick flashing" again.



Step 3 :

Enter the WIFI password (WIFI password connected to the mobile phone) and click Next to match the password, and always set the bound device as prompted.



Step 4 :

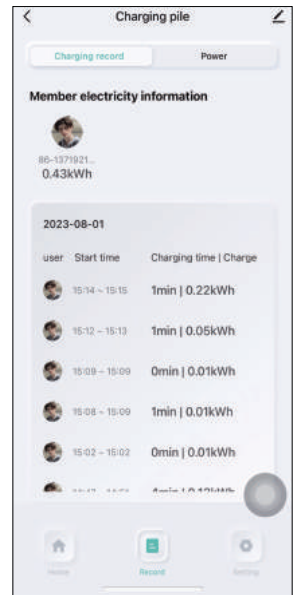
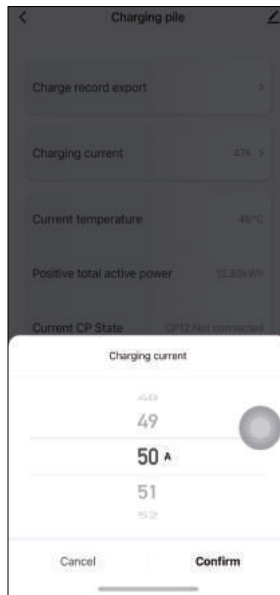
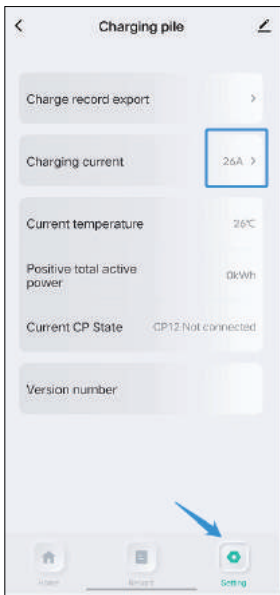
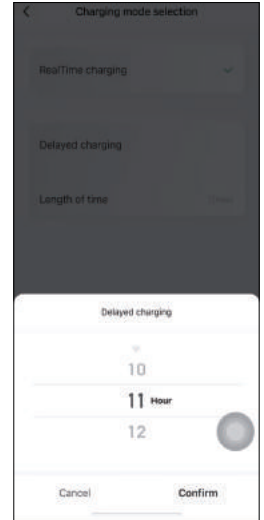
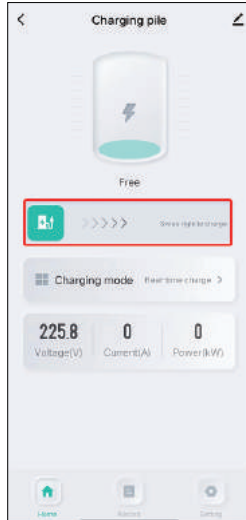
After binding the device, charge it according to the APP interface. In addition, the application can also support the functions of "adjusting current" and "delayed charging".

▲ APP FUNCTION

Charging mode function :

Click “Charging mode” to switch between real-time charging and delayed charging mode (appointment charging mode) , You can set an appointment to delay charging for a period of 1-12 hours

Adjust charging current :
Click “Setting”into“Charging current” ,Slide up and down to set charging current .

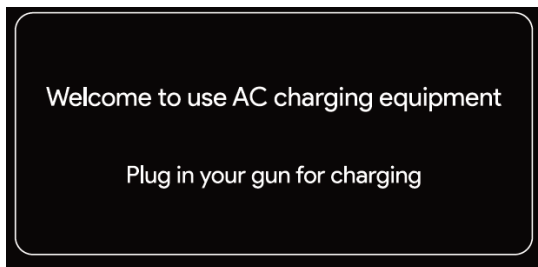
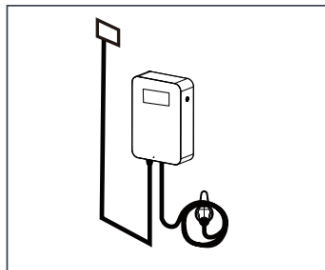


Record of charging :

Click “Charge record export ”,you can check the charging record and Power record .

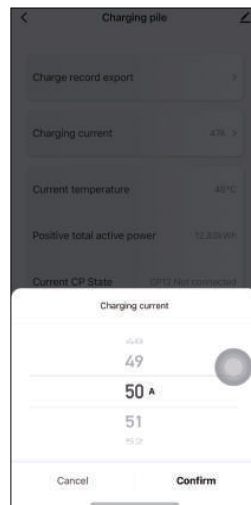
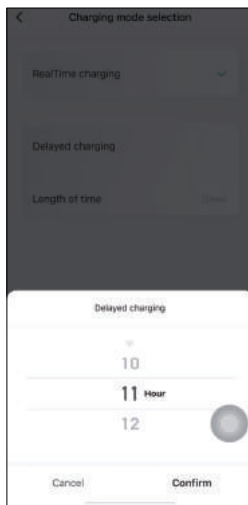
▲ CHARGING INSTRUCTIONS

1. Make sure the charging pile is properly connected to the power supply, After the device is powered on, it enters the standby state. The device display interface is shown below :

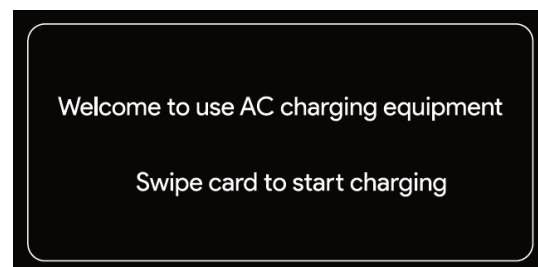
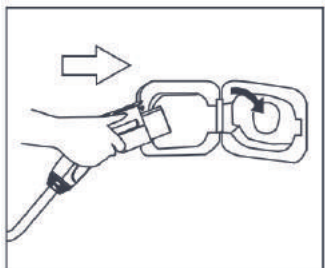


2. Adjust the time :
Selecting an appointment time

Set power : Slide up and down
to set charging power



2. Plug in the charging connector to the vehicle inlet of the car. The device display interface is shown below right side:

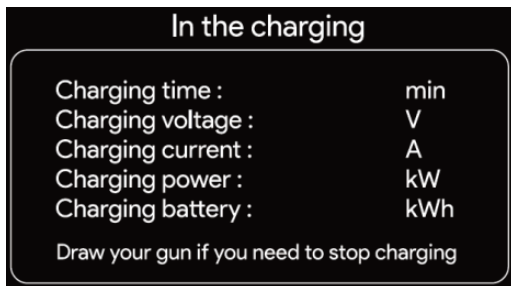
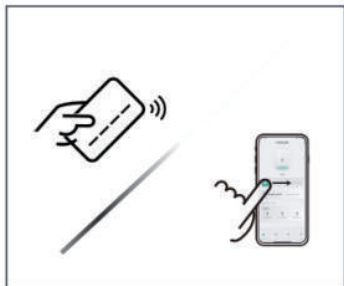


3. Swipe the card on the logo to start charging. The device display interface is shown below:

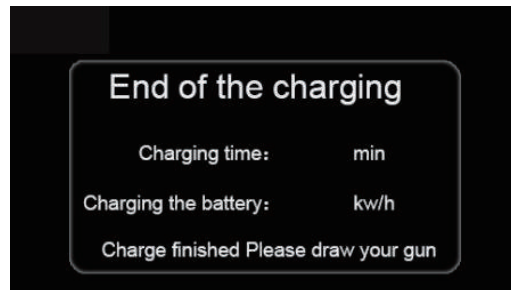
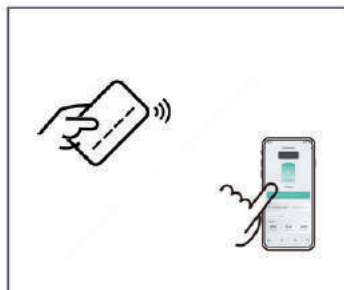
Note:

If the card stay on the logo area more than 15s,the charging station enters plug-charge mode. In this mode, the charging station will start without swiping card.

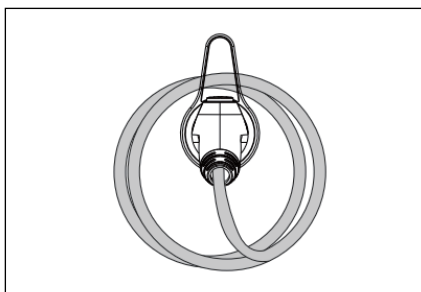
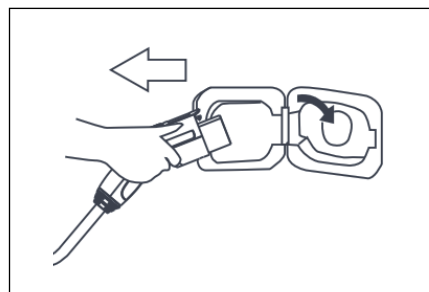
When you swipe the card again for 15S, it will switch back to swipe mode, at which point you need to swipe the card before charging it.



4.The station will stop charging until your car is fully charged ,you can click the APP or swipe the card to end



5.After charging is complete, unplug the charging gun and place the dust cover onto the charging connector.

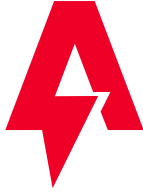


▲ STATUS INDICATOR

| Charging indicator LED indicator status table | |
|---|---|
| Three color indicators status | blue light: standby |
| | green light: charging |
| | red light / purple light :failure |
| Standby | steady blue light |
| Connected | steady green light |
| Charging | green light flashing Green Breathing Lighting |
| CP fault | steady red light |
| Over voltage or under voltage | the red light blinks once every 1S |
| No ground wire | the red light blinks once every 2S |
| Emergency stop | the red light blinks once every 4S |
| Over current | the red light on for 3s,off for 3s |
| Electric leakage | the purple light blink once every 1S |
| Over temperature | the purple light blink once every 2S |
| Relay adhesion | the purple light blink once every 4S |

▲ COMMON PROBLEMS AND SOLUTIONS

| Problems | Cause | Solution |
|---|--|---|
| The Display is black (LED indicator is off) | The AC inlet switch is not closed, and the AC inlet switch is tripping. | Close the AC incoming wire switch again. If it trips all the time, please check whether the wiring of the equipment is correct and the L or N wire is connected to the L1,L2 terminal. |
| Controller Boot Failure | The gun is not inserted properly; During the charging process, someone pressed a button on the charging handle. | Put the gun back in place; Strengthen supervision after normal charging to prevent someone from pressing the handle button during charging |
| End lock gun | The WIFI signal network is unstable, and unlocking failed. Vehicle communication problem. | turn off the car starting key, turn off the engine and lock the car, and then restart the car; If the problem cannot be solved, please contact the car dealers! |
| Symptom Possible causes | AC input voltage too high | <ol style="list-style-type: none"> 1. If the voltage exceeds 265Vac for a short time, wait for the power grid to restore itself to the normal voltage range. 2. Check the background monitoring data and analyze. If the voltage in this area is overvoltage for a long time, adjust the input overvoltage protection point to 265Vac by configuring software. |
| AC undervoltage | AC input voltage too low | Check the background monitoring data and analyze. If the voltage in this area is chronically undervoltage (175Vac), the protection point of input undervoltage can be adjusted to 90 Vac at least by configuring software. |
| AC overcurrent | Excessive AC input current | <ol style="list-style-type: none"> 1. Immediately turn off the leakage/overcurrent protection circuit breaker of the power distribution box. 2. Check whether there is low impedance or short circuit between the output line of AC pile. 3. After the fault is rectified, power on the device again. If the fault persists |
| Overtemperature | The temperature in the AC pile is too high | Check the ac pile installation environment. Check whether there are other heating devices nearby. Ensure that the ambient temperature is below 50 ° C. |
| Current cannot reach the set or defined value | <ol style="list-style-type: none"> 1. Using an adapter 2. Vehicle is set for charging current 3. The vehicle's power is relatively full (more than 90%) 4. Setting of the current level of the charging pile | <ol style="list-style-type: none"> 1.If the adapter is used, please check whether the rated working current of the adapter is matched; 2. if the vehicle can set the charging current, please check whether the vehicle setting current gear is matched; 3.If the vehicle's power is relatively full (more than 90%), the vehicle may reduce the charging current, which is normal; 4.Check whether the current gear of the charging pile is set correctly ,you can check the set current gear through APP. |



FCC statement:

This equipment has been tested and found to comply with the limits for a Class B digital device, pursuant to part 15 of the FCC Rules. These limits are designed to provide reasonable protection against harmful interference in a residential installation. This equipment generates, uses and can radiate radio frequency energy and, if not installed and used in accordance with the instructions, may cause harmful interference to radio communications. However, there is no guarantee that interference will not occur in a particular installation. If this equipment does cause harmful interference to radio or television reception, which can be determined by turning the equipment off and on, the user is encouraged to try to correct the interference by one or more of the following measures:

- Reorient or relocate the receiving antenna.
- Increase the separation between the equipment and receiver.
- Connect the equipment into an outlet on a circuit different from that to which the receiver is connected.
- Consult the dealer or an experienced radio/TV technician for help.

This device complies with part 15 of the FCC Rules. Operation is subject to the following two conditions: (1) This device may not cause harmful interference, and (2) this device must accept any interference received, including interference that may cause undesired operation.

EU importer

VISHTEC Ltd

Address: 3 rd floor office 5, Plovdiv 2 Liuben Karavelov bul, 4002 Bulgaria

Email: compliance@vish-tec.com

UK Importer

VISHTEC UK Co.,Ltd

Address: 275 ISLINGTON SUITE 1405 NEW NORTH ROAD LONDON ENGLAND N1 7AA

Email: Vincent.feng@vish-tec.com



MADE IN CHINA