

# Installation Guide

## Floating Numbers Invisible standoffs

If you are not confident in installing the sign yourself, please enlist the services of a competent handy person to do this for you. The Laser Cut Shop shall not be liable for any costs associated with the installation, removal or repair of damages incurred by the end user or client. These conditions are deemed to have been read and understood.

### Included



#### Wall plugs (for masonry)

5mm or 6mm masonry bit required depending on what size plug we have provided. Measure the diameter of the plug.



#### Screws

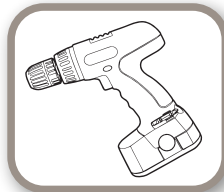


#### Sockets

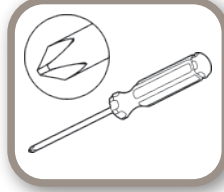


#### Studs (pre attached to your sign)

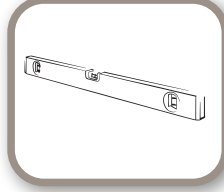
### Required



#### Drill (Hammer drill for masonry)



#### Phillips head Screwdriver



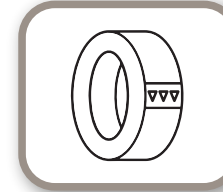
#### Spirit/Bubble level



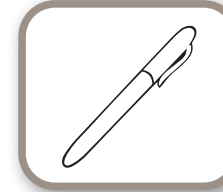
#### Drill Bit (masonry / Twist) Depending on Substrate



#### Paper (or cardboard for template)



#### Tape



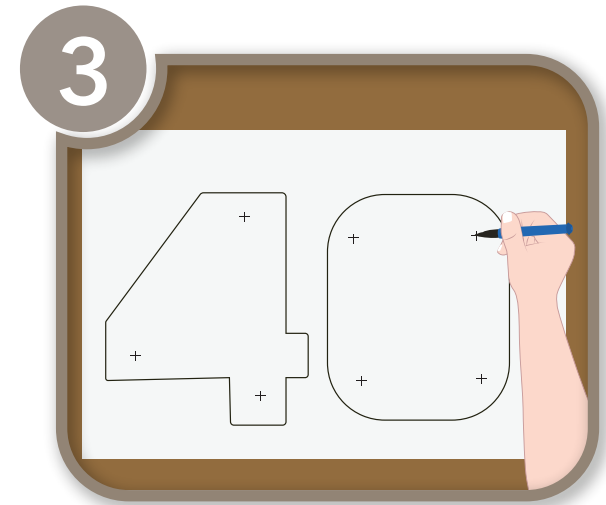
#### Marker Pen



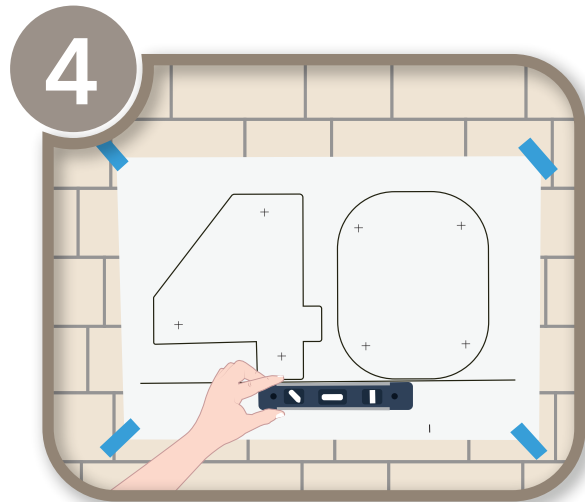
**1** Place your floating numbers on a large piece of paper. Ensure they are level, aligned and spaced exactly as you wish them to be mounted. Trace around the perimeter with a marker pen.



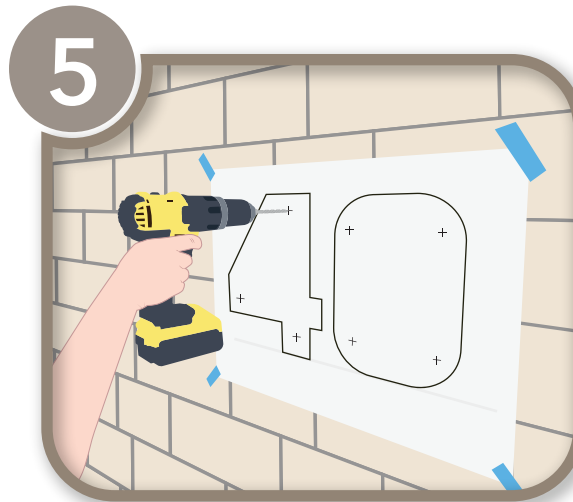
**2** Gently press down on the sign. The studs attached to the back have sharp points to pierce the paper, precisely marking their location.



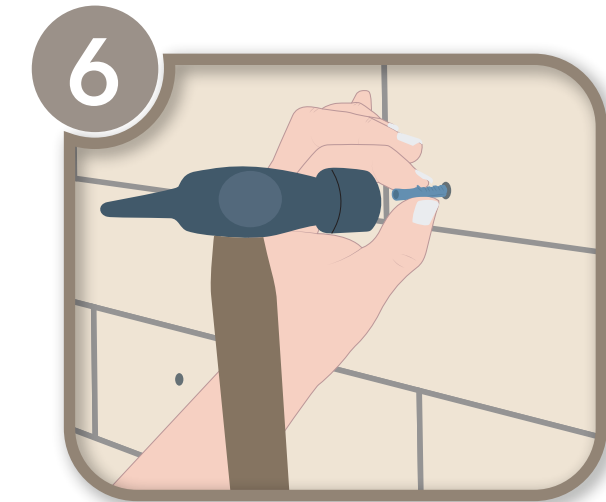
**3** Cross all of the points with a marker to make them more visible.



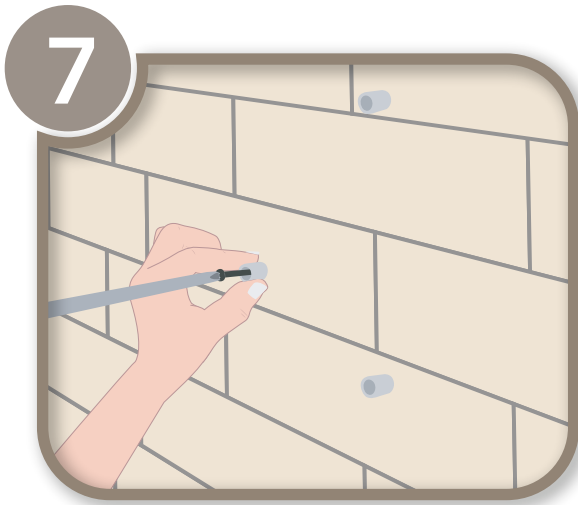
**4** Ensure your template is level and in the desired position on your wall. Tape the template in place when you are happy with the placement.



**5** The crossed points on your template show exactly where you need to drill or screw directly into your wall. (If you are NOT installing onto masonry go to step 7)



**6** Ensure drilled holes are free of any excess dust and deep enough to accommodate the length of the plugs & screws being used. Gently tap a wall plug into each hole until flush with the surface.



**Screw sockets firmly into place. Do not over tighten as you may damage the socket piece.**



**Carefully line up the studs on the back of your floating number with the sockets on the wall and press into place. You will feel a firm click. Visually inspect to ensure all sockets have clicked in.**



**Take care and gently peel off protective paper or plastic.**