

CREALITY

创造现实，成就梦想

Create reality, achieve dreams

UW-02

UW-02



Washing and Curing Machine User Manual

清洗固化机使用说明书

V1.5

Dear Consumers,

Thank you for choosing our products. For the best experience, please read the instructions before operating the Printer. Our teams will always be ready to render you the best services. Please contact us via the phone number or e-mail address provided at the end when you encounter any problem with the machine.

For a better experience in using our product, you can also learn how to use the machine in the following ways:

Visit our official website www.creality.com to find relevant software/hardware information, contact details and operation and maintenance instructions.

尊敬的用户：

感谢您选择创想三维的产品。为了您使用方便，请您在使用之前仔细阅读本说明书，并严格按照说明书的指示进行操作。

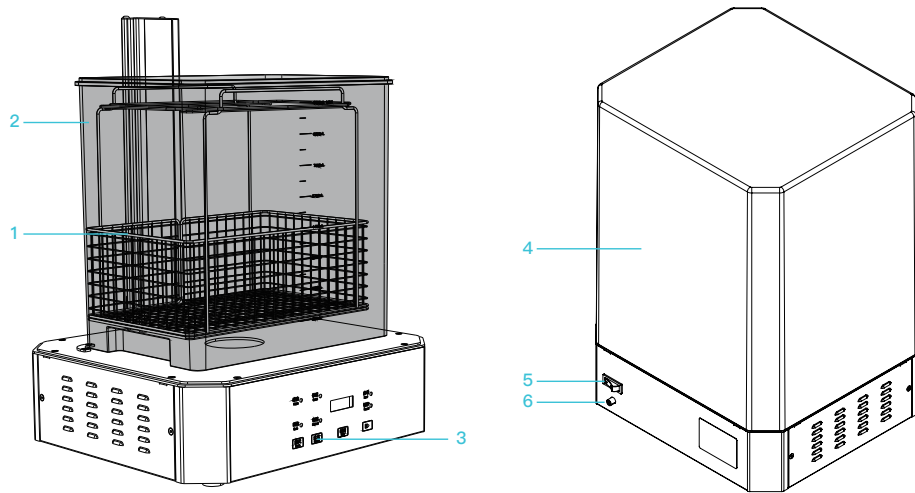
创想三维团队时刻准备为您提供优质的服务。在使用过程中无论遇到什么问题，请按照说明书结尾所提供的电话、邮箱与我们进行联系。为了您能够更好地体验我们的产品，您还可以从以下方式获取设备操作知识：

您可以登陆创想三维官网(www.cxsw3d.com)寻找相关软硬件、联系方式、设备操作、设备保养等信息。

- 1 Do not try to use any other methods that not been described in the instruction to avoid personal injury or property damage.
- 2 Do not place the machine near flammable and explosive materials or high heat sources. Please place the machine in a ventilated, cool and dust-less environment;
- 3 Do not place the machine in a vibrating or other unstable environment, the shaking of the machine will affect the working effect of the machine.
- 4 Do not use any other power cables except the one supplied.
- 5 Product maintenance is often done. When the power is cut off regularly, use a dry cloth to clean the body of the cleaning and curing machine to wipe off the dust.
- 6 Children under the age of 10, please do not use this machine without personal supervision to avoid personal injury;
- 7 After the washing liquid is used, it should be sealed in a cool and dry place. If the washing liquid is alcohol, it should be operated in strict accordance with the use specification of alcohol.
- 8 Do not pick up the upper cover when the cleaning and curing machine is in the curing working mode to prevent harm to human body caused by direct ultraviolet rays.
- 9 In case of emergency, please turn off the power of cleaning and curing machine directly.
- 10 Please do not disassemble, clean and solidify the machine without permission. If there is any problem, please contact the after-sale service.
- 11 Users should comply with the laws and regulations of the corresponding countries and regions where the equipment is located (used), abide by professional ethics, pay attention to safety obligations, and strictly prohibit the use of our products or equipment for any illegal purposes. Creality will not be responsible for any violators' legal liability under any circumstance.
- 12 Caution: Magnetic components included, please mind your safety during operation.

- 1 请勿尝试任何使用说明中没有描述的方法来使用本机，避免造成意外的人身伤害和财产损失；
- 2 请勿将本机放置在易燃易爆物中或高热源附近，请将本机放置在通风、阴凉、少尘的环境内；
- 3 请勿将本机放置在振动较大或者其他不稳定的环境内，机器晃动会影响机器的工作效果；
- 4 请勿在安装过程中使用其他产品电源线代替，请使用本机附带的电源线；
- 5 常做产品维护，定期在断电的情况下，用干布对清洗固化机做机身清洁，拭去灰尘；
- 6 年龄在10岁以下的儿童，请勿在没有人员监督的情况下使用本机，以免造成人身伤害；
- 7 洗涤剂用完后要密封在阴凉干燥的地方，若洗涤剂为酒精，要严格按照酒精的使用规范进行操作；
- 8 清洗固化机在固化的工作模式下，请勿拿起上盖，防止紫外线直射对人体造成伤害；
- 9 如遇紧急情况，请直接关闭清洗固化机的电源；
- 10 请勿私自拆装清洗固化机，如有问题请联系售后；
- 11 使用者应遵守设备所在地(使用地)相应国家、地区法律法规，恪守职业道德，注意安全生产，严禁将我司的产品或设备使用在任何非法用途上；如有违反者所应承担的相关法律责任我司概不负责。
- 12 警告：机器包含磁性部件，使用时请注意安全。

Introduction 设备简介	01-01
Parameters 设备参数	02-02
Parts List 零部件清单	03-03
Washing Container Installation 清洗桶安装	04-04
Washing Model 模型清洗	05-05
Loading 装料	06-06
Washing Mode 清洗模式	07-07
Curing Installation 固化安装	08-08
Curing Mode 固化模式	09-09
Daily Care 日常保养	10-10
Maintenance of Stirring Fan 搅拌扇叶的维护	11-11
Troubleshooting Guide 故障排除指南	12-12



1 Washing Basket
清洗篮

2 Washing Container
清洗桶

3 Operation Panel
操作面板

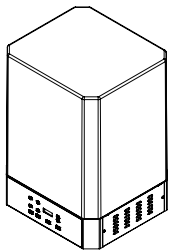
4 UV Protective Cover
UV防护罩

5 Switch
电源开关

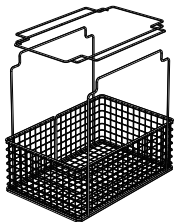
6 Power DC Interface
电源DC接口

Basic Parameters 基本参数	
Model Name 产品型号	UW-02
Control Method 控制方式	Touch button, LED indicator 触摸按键, LED指示灯
Rated Voltage 额定电压	DC 24V
Rated Power 额定功率	60W
Mode 模式	Washing and Curing 清洗固化
Time 时间	2min-30min 2分钟-30分钟
Washing Size 清洗尺寸	240*160*200mm
Curing Size 固化尺寸	Φ200*300mm
Machine Size 设备尺寸	325*295*485mm
Package Size 包装尺寸	381*349*525mm
Net weight 净重	7.1kg
Gross Weight 毛重	8.9kg
Machine Language 设备语言	Chinese/English 中英文

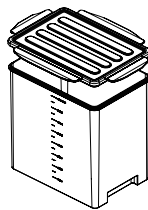
3. Parts List 零部件清单



1 Machine Main-Body | 主机 x 1



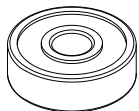
2 Cleaning basket assembly x 1
清洗篮组件 x 1



3 Washing Container and
Washing Container Cover x 1
清洗桶盖子和清洗桶 x 1



4 Hexagon Wrench 1.5#、
2# x 1
内六角扳手1.5#、2# x 1



5 Spare Stainless Steel
Bearing x 1
备用不锈钢轴承 x 1



6 Curing Platform x 1
固化平台 x 1



7 Rubber Ring x 1
胶圈 x 1



8 Power Adapter and Power Cable
电源适配器 x 1 + 电源线 x 1



Notes: The accessories above are only for reference, please refer to the physical accessories!
注意：以上配件仅供参考，请以实物为准！

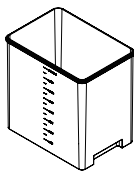
4. Washing Container Installation 清洗桶安装

Align the cleaning bucket with the groove of the bottom platform, put it firmly on the bottom platform, and place the cleaning basket assembly on the cleaning bucket, as shown below:

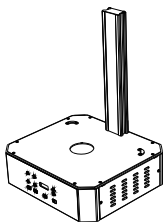
先将清洗桶对准底板平台的凹槽，放稳在底板平台上，其次将清洗篮组件放置于清洗桶上，如下图所示：



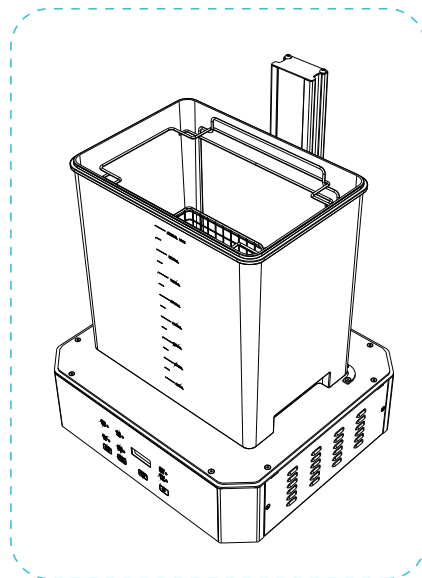
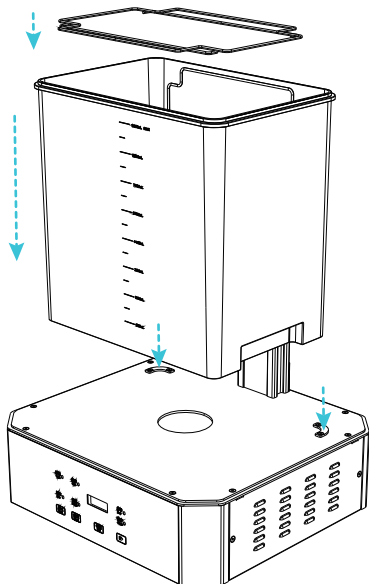
Cleaning basket assembly | 清洗篮组件 x 1



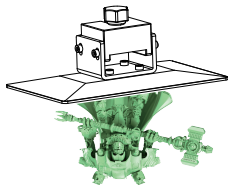
Washing Container | 清洗桶 x 1



Machine Main-Body | 主机 x 1



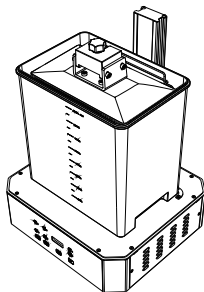
5. Washing Model 模型清洗



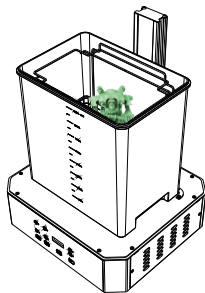
Model has not been removed from the printing platform:
打印模型未从打印平台取下:



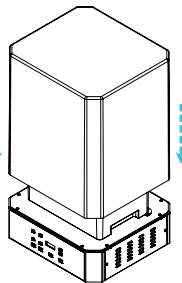
Model has been removed from the printing platform:
打印模型已从打印平台上取下:



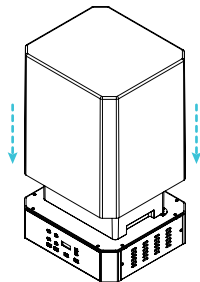
1. As shown in the figure, place the printing platform on the cleaning equipment;
1. 如图所示, 将打印平台放置在清洗设备上;



1. Put the model in the cleaning basket;
1. 将模型放置于清洗篮中;



2. As shown in the figure, place the printing platform on the cleaning platform on the cleaning equipment;
2. 将UV防护罩置于主机上, 启动清洗模式。



2. As shown in the figure, place the printing platform on the cleaning platform on the cleaning equipment;
2. 将UV防护罩置于主机上, 启动清洗模式。



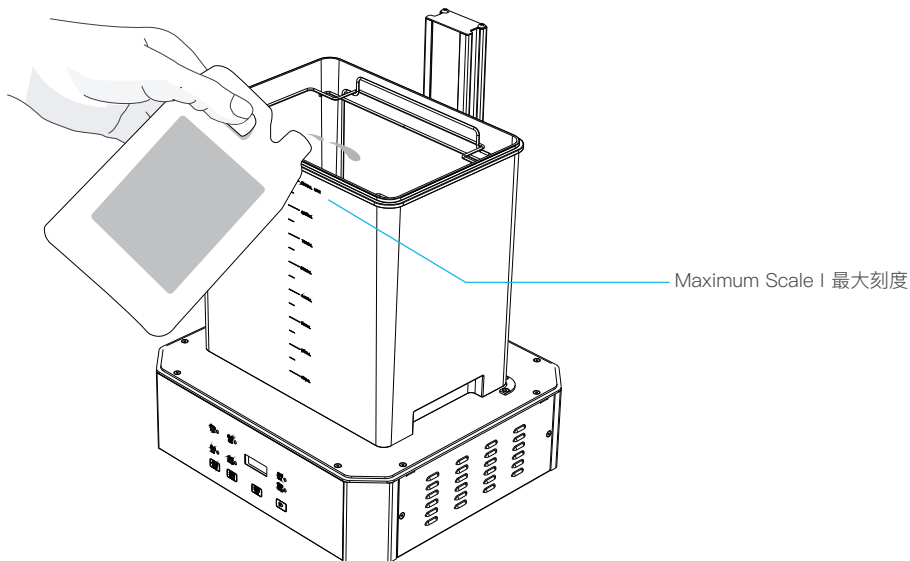
Notes: ① The bore diameter of cleaning basket is 15 mm, so the model of less than 15 mm should not be scooped off the platform to avoid the model from falling into the bottom of the cleaning bucket and damaging the model; ② When the model is fixed, pour in alcohol, which should not exceed the maximum scale of the cleaning bucket.

注意: ① 清洗篮的孔径为15mm, 小于15mm的模型不要从平台铲下, 避免模型掉入清洗桶底部而损坏模型;

② 模型固定好后倒入酒精, 倒入的酒精不能超过清洗桶的最大刻度;

6.Loading 装料

Pour the cleaning liquid into the washing container, the tank capacity is: 500ml/1800ml/3100ml/4400ml/5700ml/7000ml/8300ml/9600ml.
将清洗液体倒入清洗桶，桶位容量分别是：500ml/1800ml/3100ml/4400ml/5700ml/7000ml/8300ml/9600ml.



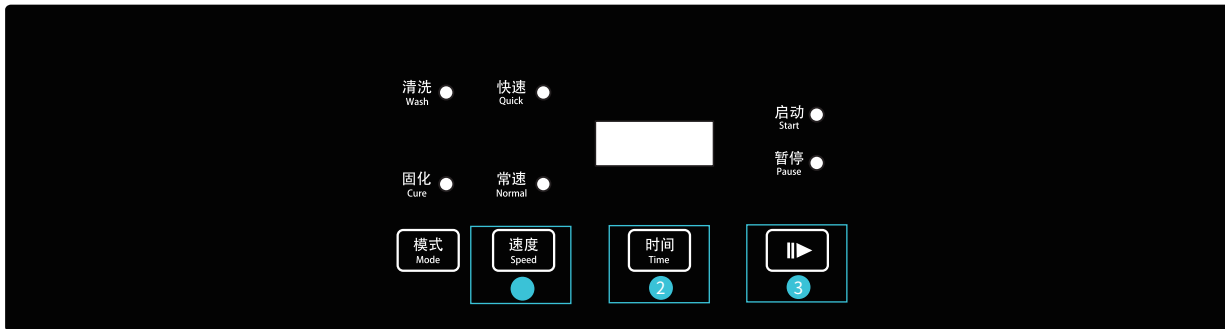
Tips: The cleaning liquid can be alcohol, detergent solution and other liquids.
提示:清洗液体可以是酒精、洗涤剂溶液等液体。



Warning: The cleaning fluid cannot exceed the maximum scale of the washing container!
警示: 清洗液不能超过清洗桶的最大刻度!

7. Washing Mode 清洗模式

After the power is started, the default working mode is washing mode. Touch the Speed→Time→Start and the machine will work. The machine beeps to indicate the end of the washing. (If you pick up the UV protective cover during the washing, the program will be paused. When close the UV protective cover, you need to press the start button to resume working.) | 待电源启动之后，机器默认工作模式为清洗模式，轻触面板上的速度→时间→启动，机器就处于清洗工作状态，清洗完成后，机器发出蜂鸣声提示清洗结束。（机器运行中拿起UV防护罩，程序将被暂停，盖上UV防护罩后需按启动键，程序才会恢复运行。）



Note: The operation interface is for reference only, please refer to the real product! | 注意：操作界面仅供参考，请以实物为准！



Reminder: The washing time is set to 2、5、10、15、20、30min, from 2min to 30min, Every time you press the time button, the working time will be displayed accordingly, when starting, the starting indicator light will be on.

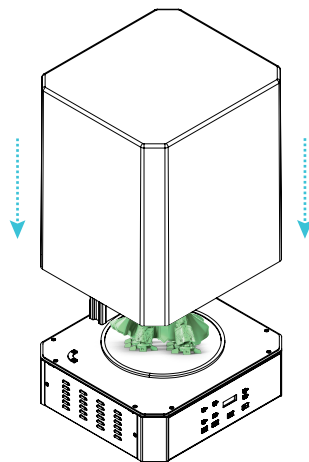
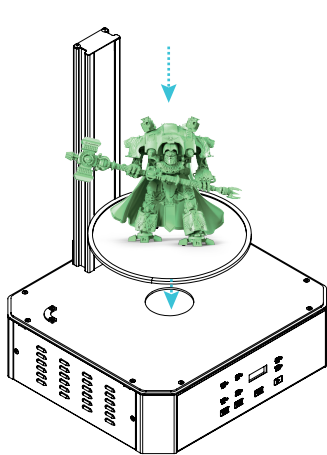
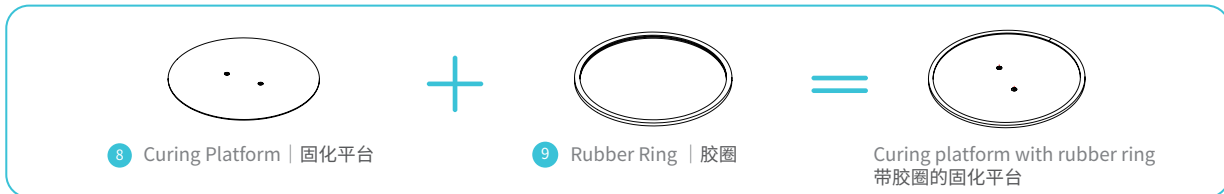
温馨提示：清洗时间设置是2、5、10、15、20、30min，从2min到30min，每按一次时间按钮，工作的时间会相应显示出来，启动时，启动指示灯亮。



Notes: 1. The washing time is 2 minutes for the smooth model surface, and the time can appropriately prolong for the complicated model. 2.The washing speed is selected according to the amount of cleaning fluid in the washing container. When finish the washing, remove the washing container and close the washing container cover to avoid spilling cleaning fluid on the machine and causing the machine to short circuit. 3.When washing the model, the model should be completely immersed in cleaning fluid. | 注：1. 清洗的时间，对于模型表面不复杂的模型清洗时间为2min，对于复杂的模型适当的增加时间。2. 清洗的速度根据清洗桶清洗液的多少，来选定清洗的速度。清洗结束后，请将清洗桶取下并盖上清洗桶盖；避免清洗液洒落到机器上，造成机器短路。3. 清洗模型时，模型要完全浸泡在清洗液里。

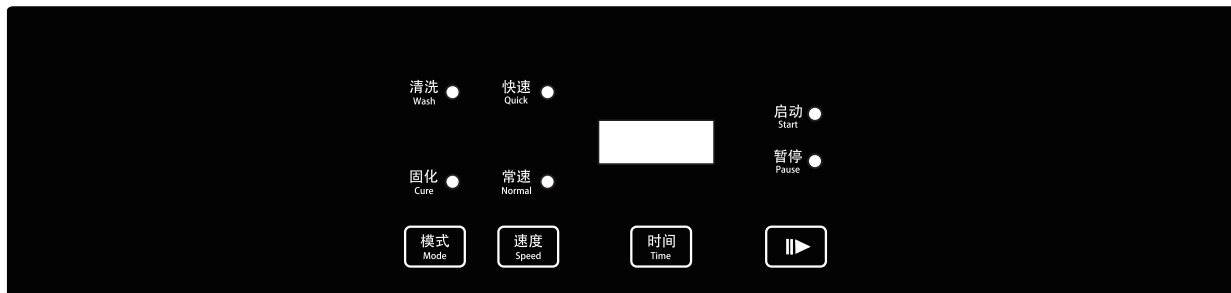
8.Curing Installation 固化安装

1. Please tear off the protective film of the curing platform before use. The curing platform has the effect of mirror reflection. When curing the model, the UV light will be reflected on the curing platform, which can increase the curing effect. | 使用前请撕开固化平台的保护膜,固化平台具有镜面反光的效果,当固化模型的时候,UV光照在固化平台,会被反射,可以增加固化的效果。
2. For your safe use, please wrap the protective rubber ring around the edge of the curing platform before installing the curing platform, so as to avoid the model from falling off when the platform rotates. | 为确保您的安全使用,在安装固化平台之前请将保护胶圈包裹在固化平台边缘,这样也可以避免模型在平台转动时掉落。
3. Align the curing platform with the card position of the bottom plate platform and insert it (if the washing container is on the bottom plate platform, take out the washing container first), then place the model on the curing platform and cover the UV protective cover. | 将固化平台对准底板平台的卡位插入。(清洗桶如果在底板平台上应先将清洗桶取出),然后将模型放在固化平台上,盖上UV防护罩。



9.Curing Mode 固化模式

Touch the mode on the panel → choose curing mode → curing speed → curing time → start icon to start curing the model; after curing is completed, the machine will send out the buzzer indicates the end of curing. | 轻触面板上的模式(选择固化)→速度→时间→启动;固化完成后,机器发出蜂鸣声提示固化结束。



Note: The operation interface is for reference only, please refer to the real product! | 注意: 操作界面仅供参考, 请以实物为准!



Reminders: 1.The washing time is set to 2、5、10、15、20、30min, from 2min to 30min,Every time you press the time button,the working time will be displayed accordingly2.The choice of curing time, the model time for the model surface is not complicated is 2min, for the complicated model, the appropriate increase time
温馨提示: 1.清洗时间设置是2、5、10、15、20、30min, 从2min到30min, 每按一次时间按钮, 工作的时间会相应显示出来。2.固化时间的选择, 对于模型表面不复杂的模型时间为2min, 对于复杂的模型适当的增加时间。



Note 1: During the curing process, if you pick up the UV protective cover during the washing, the program will be paused. When close the UV protective cover, you need to press the start button to resume working. Don't pick up the UV protective cover during the curing.

Note 2: The high temperature of UV protective cover foreplate is regular due to the direct curing light when model solidifying.

Note 3: Do not look at the curing light cause it is too harsh even though UV protective cover has been obstruct 99.995% UV-light when model solidifying
Note 4: The inherent attribute of magnet may cause acceleration tardiness (which is normal) when starting curing.

注意1:模型固化过程中,拿起UV防护罩固化程序将被暂停,盖上UV防护罩后需按下启动键程序才会恢复运行;为了不影响固化效果,固化过程中请勿拿起UV防护罩。

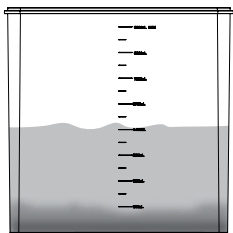
注意2:模型固化过程中,因固化灯直射UV防护罩前板,UV防护罩前板温度较高,属正常现象。

注意3:模型固化过程中,UV防护罩已阻隔99.995%紫外光,灯光刺眼,请勿直视固化灯。

注意4:固化模式启动时可能存在加速缓慢的现象,此情况由磁铁的固有属性导致,属正常现象。

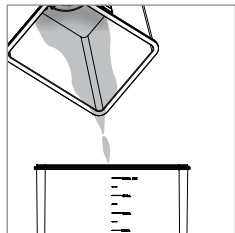
10. Daily Care 日常保养

Recycling of washing liquid: The following treatment method of washing liquid takes "alcohol" as an example. The filtered alcohol still has some resin dissolved in it, but it can still be used to clean the model. | 洗涤液的循环利用：以下对洗涤液的处理方法以“酒精”为例，过滤后的酒精仍溶有部分树脂，但仍然可以继续用于清洗模型。



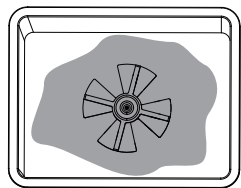
1. After washing about 30 models with the same barrel of alcohol, the alcohol will become more and more turbid. Let the turbid alcohol stand for about 10 hours to allow the waste to settle.

1. 当用同一桶酒精清洗了大概30个模型后，酒精会越来越浑浊。将浑浊的酒精静置大约10个小时，让废弃物沉淀。



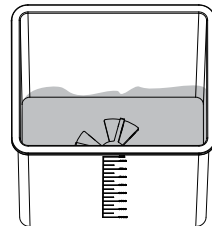
2. Pour the standing upper layer of alcohol into another container, and then clean up the bottom layer of waste. (Exposure the waste to the sun, wait until the alcohol is completely volatilized, and after the resin is cured, it can be treated as ordinary solid waste)

2. 将静置后的上层酒精倒入另一个容器中，再把底层的废弃物清理干净。（把废弃物在阳光下暴晒，待酒精完全挥发，树脂固化后，可做普通固体废物处理）



3. After cleaning up the waste, rinse the washing container several times with water; if the sediment at the bottom of the washing container cannot be washed away, you can remove the stirring fan and scrub separately. (For the method of removing the stirring fan, see the first step of "Maintenance stirring fan" on the next page).

3. 清理完废弃物后，用水将清洗桶冲洗几遍；若清洗桶底部沉淀物粘稠冲洗不掉，可将搅拌扇叶取下后分别刷洗。（搅拌扇叶取下方法见下页“搅拌扇叶的维护”的第一步）。



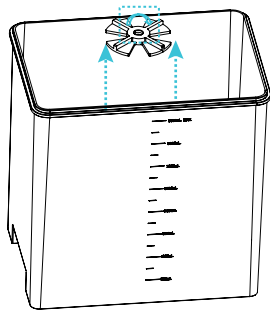
4. After cleaning the washing container, you can pour the filtered alcohol into the washing container again, and cover the washing container lid for the next time you clean the model.

4. 清洗完清洗桶后，可将过滤后的酒精重新倒入清洗桶里，并盖上清洗桶盖，以便下次清洗模型用。

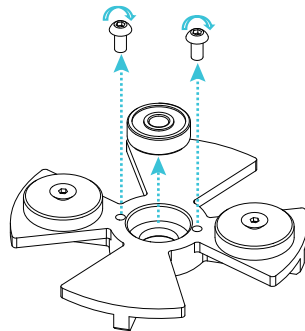
11.Maintenance of Stirring Fan 搅拌扇叶的维护

The stirring fan will run at high speed during model cleaning. If any rub occurring to the stainless steel bearing after long-term use, as shown in the following figure, replace the bearing.

清洗模型时,清洗桶上的搅拌扇叶会高速运转,若长期使用后,扇叶里不锈钢轴承有磨损,如下图所示,更换轴承。



Loosen the screws and remove the stirring fan.
拧松螺丝,取下搅拌扇叶。



Loosen the screw and replace the bearing.
拧松螺丝,更换新轴承。



Install the new bearings according to the reverse operation mentioned above after removing the bearings. | 取下轴承后,按上述反操作安装新的轴承。



Tips: Prompt maintenance and servicing is required during daily operation to prevent corrosion of the stirring fan. | 提示:日常使用中应及时维护保养,防止搅拌扇叶发生锈蚀。

1. The washing machine does not run

- ①The power connection is poor, unplug the power cord, and then plug it in again.
- ②The UV protection cover is not covered. Put the UV protection cover on and try again.

2. During the washing process, the stirring fan in the washing container does not rotate

- ①The stirring fan in the washing container is blocked by foreign objects and does not move. After the power is turned off, pour out the alcohol, remove the foreign objects and power on and clean again.
- ②The sediment at the bottom of the washing container is too viscous, which affects the normal rotation of the motor.

3. Abnormal noise occurs during the operation of the washing machine

- ①The ground where the washing machine is placed is not level enough.
- ②The motor bearing is out of oil. Need to inject ordinary butter into the oil injection hole of the motor.
- ③The screw of the mixing fan in the barrel is loose, and it makes abnormal noise when rotating during the washing process. Reinforce the mixing fan in the barrel with a screwdriver.

4. The model turns white after washing and curing

- ①The concentration of alcohol used for washing is not pure. Need to use more than 95% alcohol for washing.
- ②If the alcohol on the surface of the model solidifies without air drying, whitening will appear. The alcohol on the surface of the model should be allowed to dry before curing.

5. Press the mode switch button of the washing machine, the two mode lights are off

Please try again or restart the machine.

1. 清洗机不运行

- ①电源接触不良,将电源线拔出,再重新插上。
- ②UV防护罩没盖上,将UV防护罩盖上后再次尝试。

2. 清洗过程中,清洗桶内搅拌风扇不转动

- ①清洗桶内搅拌风扇被异物卡住导致不动,断电后将酒精倒出、取下异物后重新上电后再次清洗。
- ②清洗桶底部沉淀物过于粘稠,影响电机的正常转动。

3. 清洗机在运行的过程中出现异响

- ①清洗机放置的地面不够平整。
- ②电机轴承缺油,需在电机的注油孔注入普通黄油。
- ③桶内搅拌风扇螺丝松动,在清洗过程中旋转时发出异响,将桶内搅拌风扇用螺丝刀加固。

4. 清洗固化后模型发白

- ①用于清洗的酒精浓度不纯,需使用超过95%浓度的酒精进行清洗。
- ②如果模型表面的酒精没有风干就固化,就会出现发白。应使模型表面的酒精风干之后,再固化。

5. 清洗机按下模式切换键,两个模式灯都不亮

请再次尝试或重新启动机器。

3D PRINTING FILAMENTS

3D PRINTER UV SENSITIVE RESIN

Standard Resin

Low shrinkage, fast printing speed, almost odorless, and it's equipped with rigidity and toughness, suitable for printing common product prototypes and display models, that's also highly compatible with LCD printers.

Low Odor Resin

Low odor, high precision, detail textures are very expressive. Good fluidity, high printing success rate. Rich colors, to meet the customer's color needs, preferred for animation manual, craft furnishing industry, etc..

ABS Like Resin

With high hardness, high toughness of physical properties and strong impact resistance, it can be directly drilled on the finished models, mainly used in industrial prototype and other fields.

Dental Cast Resin

Low shrinkage, due to the low shrinkage characteristics, the size is more accurate. It's not easy to deform under pressure after molding. Used for making porcelain teeth.

Elastic Resin

Elastic Resin features good elasticity after high-strength extruding or stretching, widely applied to damping and contacting surfaces, etc., preferred to be used by people full of originality and ideas in design.

Water Washable Resin

The model can be washed with water directly, and it's safe, environmentally friendly, with high surface accuracy, short cleaning time and low material cost. Water Washable Resin is currently one of the favorite new materials for schools, educational institutions and printing enthusiasts.

Dental Mode Resin

The surface hardness is extremely high, scratch-resistant, and has low shrinkage characteristics. It is mainly used in dental implant restoration and invisible braces printing in medical dentistry.

Toughness Resin

Toughness Resin is a medium-hard, wear-resistant, and repeatedly stretchable material. It is used in parts which need to be repeatedly stretched in friction devices.

High Temperature Resin

High Temperature Resin is mainly used in making high temperature rubber molds, which can withstand temperatures of about 200°C without cracking and maintain good strength, stiffness and thermal stability.

Jewelry Cast Resin

Widely applied to jewelry industry. Excellent combustion performance, low expansion coefficient, combustion without residue. Forming process is stable without deformation. The finished product has smooth surface and high precision.

14. UV sensitive resin parameter information

Related Parameters	Standard Resin	ABS Like Resin	Dental Cast Resin	Elastic Resin	Water Washable Resin	Dental Mode Resin	Toughness Resin	High Temperature Resin	Jewelry Cast Resin
Viscosity	150-250MPa·s (NDJ-8S Rotational Viscometer (25°C))	200-350MPa·s (NDJ-8S Rotational Viscometer (25°C))	50-170MPa·s (NDJ-8S Rotational Viscometer (25°C))	300-1000MPa·s (NDJ-8S Rotational Viscometer (25°C))	100-350MPa·s (NDJ-8S Rotational Viscometer (25°C))	150-300MPa·s (NDJ-8S Rotational Viscometer (25°C))	150-300MPa·s (NDJ-8S Rotational Viscometer (25°C))	150-300MPa·s (NDJ-8S Rotational Viscometer (25°C))	100-150MPa·s (NDJ-8S Rotational Viscometer (25°C))
Absorption Band	355nm-410nm	355nm-410nm	355nm-410nm	385nm-410nm	385nm-410nm	355nm-410nm	355nm-410nm	355nm-410nm	355nm-410nm
Liquid Density	1.05-1.25g/cm ³ (Density meter (25°C))	1.05-1.13g/cm ³ (Density meter (25°C))	1.05-1.25g/cm ³ (Density meter (25°C))	1.05-1.25g/cm ³ (Density meter (25°C))	1.05-1.25g/cm ³ (Density meter (25°C))	1.05-1.25g/cm ³ (Density meter (25°C))	1.05-1.25g/cm ³ (Density meter (25°C))	1.05-1.25g/cm ³ (Density meter (25°C))	1.05-1.13g/cm ³ (Density meter (25°C))
Flexural Modulus	1.882-2.385Mpa	1.192-2.525Mpa	1.192-2.525Mpa	1.882-2.385Mpa	1.882-2.385Mpa	1.882-2.385Mpa	1.882-2.385Mpa	1.882-2.385Mpa	1.192-2.525Mpa
Bending Strength	59-70MPa	68-80MPa	49-58MPa	40-70MPa	40-70MPa	59-70MPa	40-70MPa	59-70MPa	49-58MPa
Heat Distortion Temperature	80°C	80°C	75°C	80°C	80°C	80°C	80°C	220°C	65°C
Thermal Expansion Coefficient	95*E-6	95*E-6	95*E-6	95*E-6	95*E-6	95*E-6	95*E-6	95*E-6	95*E-6
Volume Shrinkage	3.72-4.24%	3.72-4.24%	1.88-2.45%	3.72-4.24%	3.72-4.24%	1.56-1.95%	3.72-4.24%	3.72-4.24%	4.06-5.08%
Linear Shrinkage	1.05-1.35%	1.05-1.35%	0.8-1%	1.05-1.35%	1.05-1.35%	0.85-1.05%	1.05-1.35%	1.05-1.35%	1.05-1.35%
Tensile Strength	36-52MPa	42-62MPa	42-62MPa	30-52MPa	30-52MPa	42-62MPa	30-52MPa	36-52MPa	42-62MPa
Tensile Modulus	1.779-2.385MPa	1.86-2.645MPa	1.86-2.645MPa	1.779-2.385MPa	1.779-2.385MPa	1.779-2.385MPa	1.779-2.385MPa	1.779-2.385MPa	1.86-2.645MPa
Elongation at Break	11%-20%	11%-21%	11%-20%	200%	120%	11%-20%	130%	11%-20%	11%-20%
Shore Hardness	84D	75-80D	80-88D	20-30D	80-85D	82D	65-75D	86D	65D
Glass Transition Temperature	100°C	100°C	78°C	100°C	100°C	100°C	100°C	100°C	78°C
Solid Density	1.05-1.25g/cm ³	1.05-1.13g/cm ³	1.05-1.13g/cm ³	1.05-1.25g/cm ³	1.05-1.25g/cm ³	1.05-1.25g/cm ³	1.05-1.25g/cm ³	1.05-1.25g/cm ³	1.05-1.13g/cm ³
Notched Impact Strength	44-49J/m ²	60-80J/m ²	44-49J/m ²	41-48J/m ²	41-48J/m ²	41-49J/m ²	41-48J/m ²	44-49J/m ²	44-49J/m ²

3D打印机耗材

光敏树脂

刚性树脂

低收缩率、打印速度较快，低味无毒，具备刚性和韧性。适合打印普通的产品原型及展示模型，高度兼容LCD型打印机。

低气味刚性树脂

低气味，高精度，细节纹理表现力佳。流动性好，打印成功率高。色系丰富，可满足客户对颜色的需求，适用于动漫手办，工艺摆设等。

类ABS树脂

具有高硬度，高韧性的物理性能，且抗冲击能力强，可以在模型成品上直接攻牙钻孔，主要应用于工业手板等领域。

可铸造牙冠树脂

具备低收缩率的特性，尺寸更加精准。成型后硬度高，遇到压力挤压不易变形。适用于制作烤瓷牙。

弹性树脂

弹性树脂是在高强度挤压和反复拉伸下表现出优秀弹性的材料，这种新材料可应用于减震、接触面，和其他工程应用。适合有趣创意的实现。

水洗树脂

模型可直接用水冲洗，安全环保干净，表面精度高，清洁的时间和材料成本低，是目前学校、教育机构及打印爱好者的喜欢的新材料之一。

牙模树脂

表面硬度极高，耐刮，具有低收缩特性，主要应用于医疗齿科的牙模种植修复以及隐形牙套打印制作等。

柔性树脂

柔性树脂是一种中等硬度、耐磨、可反复拉伸的材料。这种材料被用于摩擦装置需要反复拉伸的零部件中。

压模树脂

压模树脂主要应用于饰品的高温橡胶翻模，能承受200°C左右的温度不开裂，并能保持良好的强度，刚度和热稳定性。

可铸造首饰树脂

广泛应用于珠宝行业。燃烧性能优良，膨胀系数小，燃烧无残留。成型过程稳定不变形，成品表面光滑，精度高。

16.光敏树脂种类参数信息

相关参数	刚性树脂	类ABS树脂	可铸造牙冠树脂	弹性树脂	水洗树脂	牙模树脂	柔性树脂	压模树脂	可铸造首饰树脂
粘度	150-250MPa·s (NDJ-8S 旋转粘度仪(25°C))	200-350MPa·s (NDJ-8S 旋转粘度仪(25°C))	50-170MPa·s (NDJ-8S 旋转粘度仪(25°C))	300-1000MPa·s (NDJ-8S 旋转粘度仪(25°C))	100-350MPa·s (NDJ-8S 旋转粘度仪(25°C))	150-300MPa·s (NDJ-8S 旋转粘度仪(25°C))	150-300MPa·s (NDJ-8S 旋转粘度仪(25°C))	150-300MPa·s (NDJ-8S 旋转粘度仪(25°C))	100-150MPa·s (NDJ-8S 旋转粘度仪(25°C))
吸收波段	355nm-410nm	355nm-410nm	355nm-410nm	385nm-410nm	385nm-410nm	355nm-410nm	355nm-410nm	355nm-410nm	355nm-410nm
液体密度	1.05-1.25g/cm ³ (密度计(25°C))	1.05-1.13g/cm ³ (密度计(25°C))	1.05-1.25g/cm ³ (密度计(25°C))	1.05-1.25g/cm ³ (密度计(25°C))	1.05-1.25g/cm ³ (密度计(25°C))	1.05-1.25g/cm ³ (密度计(25°C))	1.05-1.25g/cm ³ (密度计(25°C))	1.05-1.25g/cm ³ (密度计(25°C))	1.05-1.13g/cm ³ (密度计(25°C))
弯曲模量	1.882-2.385Mpa	1.192-2.525Mpa	1.192-2.525Mpa	1.882-2.385Mpa	1.882-2.385Mpa	1.882-2.385Mpa	1.882-2.385Mpa	1.882-2.385Mpa	1.192-2.525Mpa
弯曲强度	59-70MPa	68-80MPa	49-58MPa	40-70MPa	40-70MPa	59-70MPa	40-70MPa	59-70MPa	49-58MPa
热变形温度	80°C	80°C	75°C	80°C	80°C	80°C	80°C	220°C	65°C
热膨胀系数	95*E-6	95*E-6	95*E-6	95*E-6	95*E-6	95*E-6	95*E-6	95*E-6	95*E-6
体积收缩率	3.72-4.24%	3.72-4.24%	1.88-2.45%	3.72-4.24%	3.72-4.24%	1.56-1.95%	3.72-4.24%	3.72-4.24%	4.06-5.08%
线收缩率	1.05-1.35%	1.05-1.35%	0.8-1%	1.05-1.35%	1.05-1.35%	0.85-1.05%	1.05-1.35%	1.05-1.35%	1.05-1.35%
拉伸强度	36-52MPa	42-62MPa	42-62Mpa	30-52MPa	30-52MPa	42-62MPa	30-52MPa	36-52MPa	42-62MPa
拉伸模量	1.779-2.385MPa	1.86-2.645MPa	1.86-2.645MPa	1.779-2.385MPa	1.779-2.385MPa	1.779-2.385MPa	1.779-2.385MPa	1.779-2.385MPa	1.86-2.645MPa
断裂拉伸应变	11%-20%	11%-21%	11%-20%	200%	120%	11%-20%	130%	11%-20%	11%-20%
邵氏硬度	84D	75-80D	80-88D	20-30D	80-85D	82D	65-75D	86D	65D
玻璃化温	100°C	100°C	78°C	100°C	100°C	100°C	100°C	100°C	78°C
固体密度	1.05-1.25g/cm ³	1.05-1.13g/cm ³	1.05-1.13g/cm ³	1.05-1.25g/cm ³	1.05-1.25g/cm ³	1.05-1.25g/cm ³	1.05-1.25g/cm ³	1.05-1.25g/cm ³	1.05-1.13g/cm ³
缺口冲击强度	44-49J/m ²	60-80J/m ²	44-49J/m ²	41-48J/m ²	41-48J/m ²	41-49J/m ²	41-48J/m ²	44-49J/m ²	44-49J/m ²



Scan the code to know more

Warranty Policy ←

- 1-year Limited Warranty since the date of product purchase.
- 6-months Limited Part Warranty for UV light.
- 3-months Limited Part Warranty for 2K Screen.
- No Warranty for the Release Film and Product Gift (Wrench ,Spare Stainless Steel Bearing , etc.).

What Is Covered? ←

Any defects in material, workmanship of product will be covered until you provide any relating documents and information, including but not limited to:

- User of the product are in the country of purchase
- Defective product is a CREALITY product
- Proof of Purchase

What Is Not Covered? ←

CREALITY does not guarantee the service as a result of:

1. The proof of purchase being altered or made illegible.
2. The product label or serial number on the product being altered or made illegible.
3. Normal wear of accessories or consumables for use as release film.
4. Malfunction or damage caused by personal retrofitting, or improper installation and usage.
5. Malfunction or damage caused by use in non-recommended working environments.
6. Malfunction or damage caused by overuse (overload) or wrong maintenance (damp, mildew, etc.)
7. Malfunction or damage caused by Force Majeure (fire hazard, earthquake, lightning and floods, etc.)
8. Malfunction or damage caused by the use of other brand parts or consumable.

Technical Support ←

Please enjoy our technical support of the whole lifetime (Except technical problem beyond product itself) and refer to the manual at the same time.

Please provide product Serial Number when apply for technical support

Kindly Notification ←

Please read the user manual and warranty card carefully before the use.

For any service, Please priory contact local seller or contact us via

Email: cs@creality.com for support.

See www.creality.com/after-service-policy/ for specific warranty information about your product and procedures to act on a warranty claim.



扫码了解更多

退/换货政策 ←

一、满足退/换货时间

- ① 电商平台购买支持7天无理由退货，即产品签收时间起算，满168小时为7天。
- ② 因机器品质问题，非人为损坏的情况，签收后15天内可申请退换货。
- ③ 如另通过合同购买且有签订退换货时间的以合同为准，运费标准以售后服务卡为准。

二、产品外观要求无损伤、划痕、污迹、裂纹、变形等；随机配件、工具、赠品、包装等要求齐全完好。经我司售后检测判定，如退/换货收到的产品外观损坏，配件不全或未按原包装打包邮寄导致的问题，客户需承担相应的费用，具体损耗及费用需寄回后经专业售后人员进行检测核算。

三、非质量问题退/换货，如使用了耗材，客户需承担耗材的费用；由于包装纸盒或打木架返厂后是无法二次使用的，因此客户需承担包装费；具体损耗及费用需寄回后经专业售后人员进行检测核算。

四、因不喜欢、不想要、拍错、使用不当、不满意产品等原因造成的退换货，退回运费需客户自行承担。

五、换货时，客户需先将机器寄回，公司收到机器后会及时安排发货。

退/换货运费标准 ←

类型	分类	寄回运费	出库运费
换货	非品质问题	客户承担	公司承担
	品质问题	公司承担	公司承担
退货	非品质问题	客户承担	/
	品质问题	公司承担	/

保修政策 ←

一、质保期

- ① 产品保修一年，易损件和赠品除外。
- ② 易损件（轴承等）保修三个月。
- ③ 赠品（扳手、备用不锈钢轴承等）无保质期。收到产品后，请核对说明书部件清单，如赠品有缺少或品质问题，7天内可联系售后申请补发或更换。

二、质保期内保修：经我司售后检测判定为品质问题，公司提供免费维修服务；如果是人为导致的非品质问题，客户需承担相应更换的配件费用，无需承担维修费。

三、质保期外维修：由客户承担维修过程中产生的人工费、配件费、包装费、来回运费等所有费用。

返厂维修运费标准 ←

类型	返厂时间	返厂运费	出库运费
非品质问题	三个月以内	客户承担	公司承担
	三个月以上	客户承担	客户承担
品质问题	一个月以内	公司承担	公司承担
	一至三个月	客户承担	公司承担
	三个月以上	客户承担	客户承担

下列情况不列入质保范围 <

- ① 无法提供有效的机器制造编码、购买凭证和保修卡，或信息被涂改、字迹模糊、无法辨认等。
- ② 正常的使用磨损而造成的部件损坏。
- ③ 未按说明书指导，不正确安装、使用及操作，或私自对机器进行改装而造成机器故障或损坏。
- ④ 在非机器规定的工作环境下使用而造成机器故障或损坏。
- ⑤ 由于滥用（超出工作负荷等）或维护不当（受潮、进液、浸泡、发霉等）造成机器故障或损坏。
- ⑥ 由于不可抗因素（如：火灾、地震、雷击、水灾等）造成机器故障或损坏。
- ⑦ 由于使用其他品牌部件或低质量耗材造成的设备故障或损坏。
- ⑧ 未经官方授权的服务点维修过的机器。

技术支持 <

凡购买创想三维清洗固化机，均可享受（除产品本身之外）终生技术支持，如超越产品本身的技术问题恕不提供。如在使用过程中遇到技术问题，请联系售后客服帮您解决。

温馨提示 <

- ① 使用机器前请仔细阅读说明书和售后服务卡。
- ② 质保期内维修过的机器后仍享有剩余质保服务。
- ③ 退/换货及返厂维修需按原包装寄回机器，以免快递过程中产生其他问题，建议妥善保存好产品原包装。
- ④ 申请质保服务时，需提供产品制造编码、购买凭证、订单号、保修卡、发票等信息。如未提供，公司有权拒绝提供质保服务。
- ⑤ 服务时间：周一至周五，8:30-20:30；周六至周日，8:30-18:00（法定节假日除外）。热线：400-613-3882，邮箱：cs@creality.com

WARRANTY

Before returning the product and filling in a warranty, please contact after-sale person for going through after-sale formality. And attach this warranty card along with the returned machine.

Repair

Change

Return

Name: _____ Telephone: _____

Address: _____

Serial Number: _____ Order Number: _____

Channel: Platform Offline

Date of purchase Day _____ Mon. _____ Year _____

Malfunction And Damage Depiction Or Return And Change Reasons\
Suggestions:

Repair Records:



Note: Client need filling in basic infor. and return reasons. Repair records shall retain for technicians.



产品保修卡



产品寄回前请先联系售后专员，为正常进行售后处理，请务必填写此卡，并随机器寄回。

返修

换货

退货

客户名称：_____联系电话：_____

收件地址：_____

机器制造编码：_____订单编号：_____

购买渠道：电商平台 线下

购买日期：_____年_____月_____日

故障描述或退、换货原因和建议：

维修情况记录：



温馨提示：基本信息及返厂原因为客户必填项，维修情况记录部分为维修人员填写项。



Due to the differences between different machine models, the physical objects and the final images can differ. The final explanation rights shall be reserved by Shenzhen Creality 3D Technology Co., Ltd.

因每款机型不同,实物与图可能有所差异,请以实物为准,最终解释权归深圳市创想三维科技股份有限公司所有。



SHENZHEN CREALITY 3D TECHNOLOGY CO., LTD.

Add: 18F, JinXiuHongDu Building, Meilong Blvd., Longhua Dist.,
Shenzhen, China 518131

Official Website: www.creality.com

Tel: +86 755-8523 4565

E-mail: info@creality.com cs@creality.com

深圳市创想三维科技股份有限公司

深圳市龙华区民治街道新牛社区梅龙大道锦绣鸿都大厦18F

公司网站: www.cxsw3d.com

服务热线: 400 6133 882 0755-8523 4565

Scan To Learn More

扫码了解更多

