

MAYWOOD  STUDIO

WEB OF ROSES QUILT



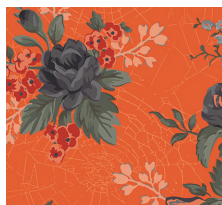
Web of Roses Quilt by Jera Brandvig
featuring the Web of Roses collection by Jera Brandvig

54½" x 54½"

maywoodstudio.com

WEB of ROSES

By Jera Brandwig



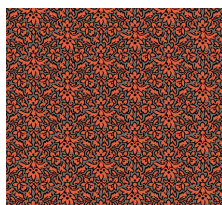
Fabric 1
M10210-O



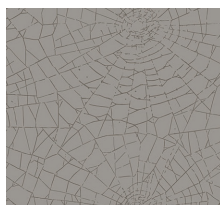
Fabric 2
M10214-O



Fabric 3
M10213-O



Fabric 4
M10215-O



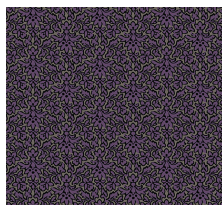
Fabric 5
M10212-K



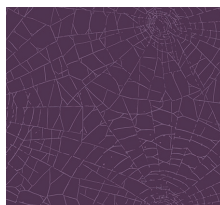
Fabric 6
10214-K



Fabric 7
10213-K



Fabric 8
M10215-V



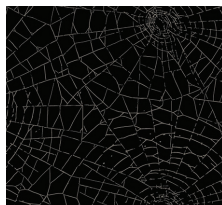
Fabric 9
M10212-V



Fabric 10
10214-V



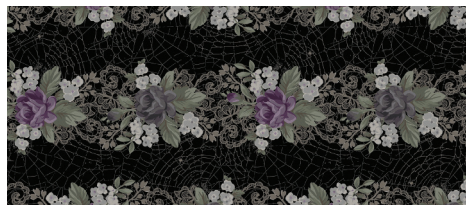
Fabric 11 + Binding
10216-V



Fabric 12
M10212-J



Fabric 13
M10210-J



Fabric 14
M10211-J

MAYWOOD  STUDIO

Maywood Studio makes every effort to make sure our patterns are accurate.
Check for updates at maywoodstudio.com/projects

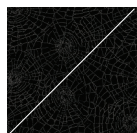
Fabric Requirements

Fabric 1	M10210-O	1/4
Fabric 2	M10214-O	1/4
Fabric 3	M10213-O	1/4
Fabric 4	M10215-O	1/4
Fabric 5	M10212-K	1/4
Fabric 6	10214-K	1/4
Fabric 7	10213-K	1/4
Fabric 8	M10215-V	1/4
Fabric 9	M10212-V	1/4
Fabric 10	10214-V	1/4
Fabric 11 + binding	10216-V	5/8
Fabric 12	M10212-J	1-1/8 yards
Fabric 13	M10210-J	1/2
Fabric 14	M10211-J	1-5/8 yards
Backing	108" wide	2 yards
	44/45" wide	4 yards

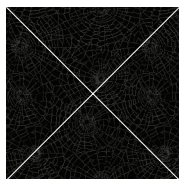
Note: For fabrics 1-12 5" squares,
you can also use
2 Charm Packs CP-MASWEB

From your charms select:

- 20 assorted purples
- 16 assorted oranges
- 12 assorted greys
- 4 assorted blacks.



Corner Setting
Triangles



Side Setting
Triangles

WOF - Width of Fabric
LOF - Length of Fabric
RST - Right Sides Together
HST - Half Square Triangle

Cutting

From Fabrics 1 -12

Cut (1) 5" x WOF strip from:

- F1, 2, 3, 4, 5, 6, 7, *12
Subcut (4) 5" x 5" squares from each strip.

Cut (1) 5" x WOF strip from:

- F8, 9, 10, *11
Subcut (5) 5" x 5" squares from each strip.

*Fabrics 11 and 12 have additional cuts. See below.

Fabric 11

Binding

Cut (6) strips 2-1/2" x WOF

Fabric 12

Corner setting triangles - see below

Cut (2) 4-1/2" squares. Cut once on the diagonal for a total of 4 triangles.

Side setting triangles - see below

Cut (5) 7-1/2" x 7-1/2" squares. Cut twice on the diagonal to yield 4 triangles per square for a total of 20 triangles.

Inner borders (See Jera's method below)

Cut (5) 3-1/2" x WOF strips. Sew together end to end.

Inner side borders: (2) 3-1/2" x 38-1/2"

Inner top/bottom borders: (2) 3-1/2" x 44-1/2"

Fabric 13 Cut (1) 14" x 14" square

Fabric 14

Outer Borders (See Jera's method below)

Cut (4) 5-1/2" x LOF strips

The length of the fabric will measure approximately 58-1/2" long, so you will be cutting the floral borders along that length. Take care to center the florals when you make the cuts.

Outer side borders: (2) 5-1/2" x 44-1/2"

Outer top/bottom borders: (2) 5-1/2" x 54-1/2"

Jera's preferred method for cutting borders

* For the inner border: After you sew the inner border strips end to end, take the long strip and align it with one side of the quilt top, then trim it to the correct length. Sew. Repeat for the other side and for the top and bottom as well.

* For the outer border: Take the border strip and align it with one side of the quilt top, then trim it to the correct length. Sew. Repeat for the other side and for the top and bottom as well.

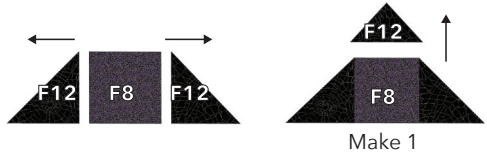
Web of Roses Quilt Instructions

Please read all instructions before you begin. Seam allowance is 1/4. Use a light sizing or starch on the squares before cutting triangles to help control stretching along the edges.

Fabric is abbreviated as 'F' - for example, F1 refers to Fabric 1.

Sew the Corner Units

1. Gather (1) each of the F8, 9, 10, and 11 squares, the (4) F12 corner setting triangles and (8) side setting triangles.



2. Sew the side setting triangles to either side of the squares. Press and trim.



3. Center the corner triangle to the top of each step 2 unit, then sew. Press.

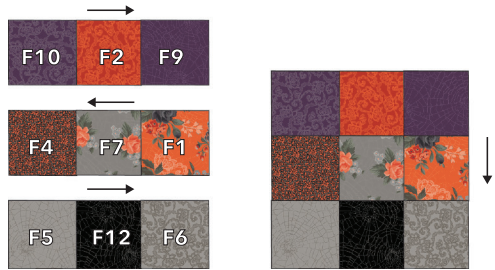


4. Trim the sides so that the corner triangle is flush with the side setting triangles. Make 1 of each.

Make 1 of each

Sew the 9 Patch Blocks

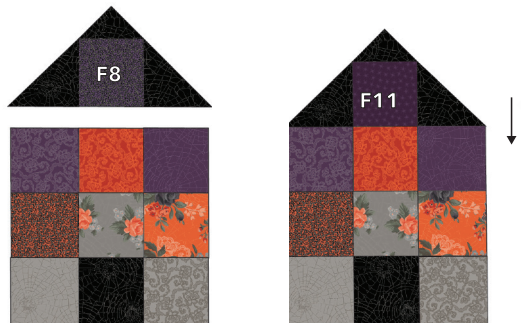
5. Gather (2) each of the F1, F2, F4, F5, F6, F7, F9, F10, F12 squares.



6. Arrange the squares into rows as shown and sew. Press to nest.

7. Sew row to row. Press. Make 2.

8. Sew the corner units to the 9 patch block as shown. Press. Make 1 of each.

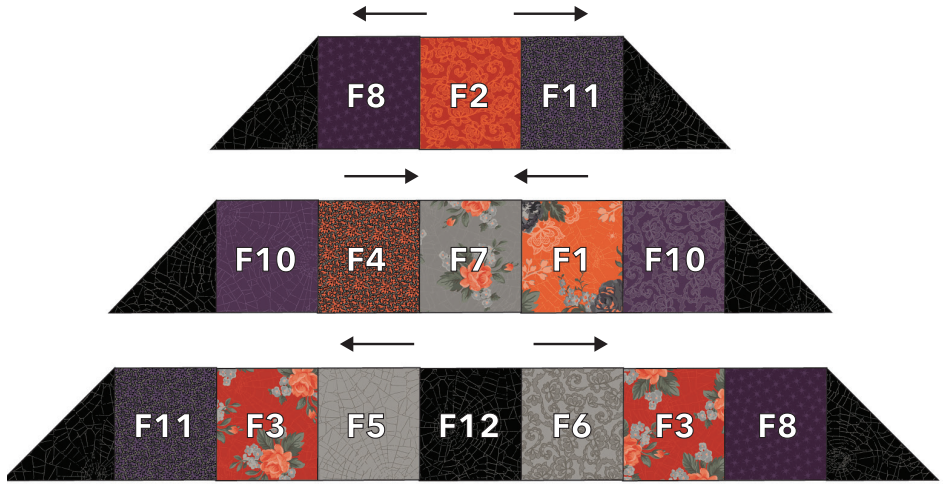


Make 1 of each

Sew the Pyramid Rows

9. Gather the remaining squares and side setting triangles.

10. Lay the rows out as illustrated. Press to nest in opposite directions from the center out.

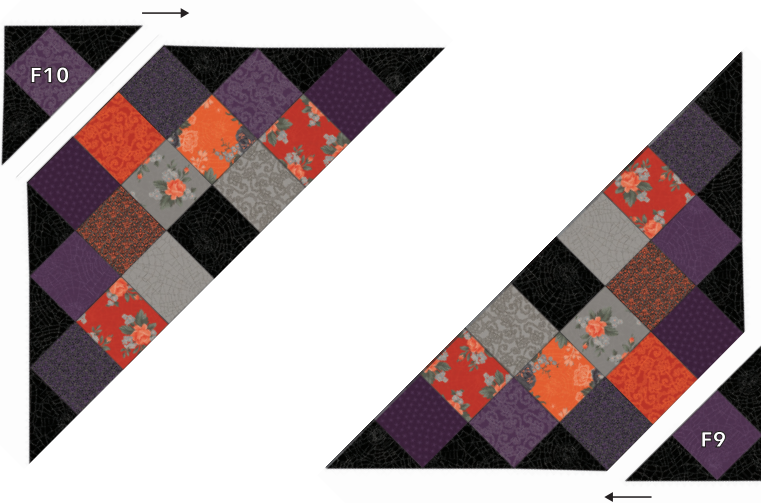


Make 2

Add the Corner Units

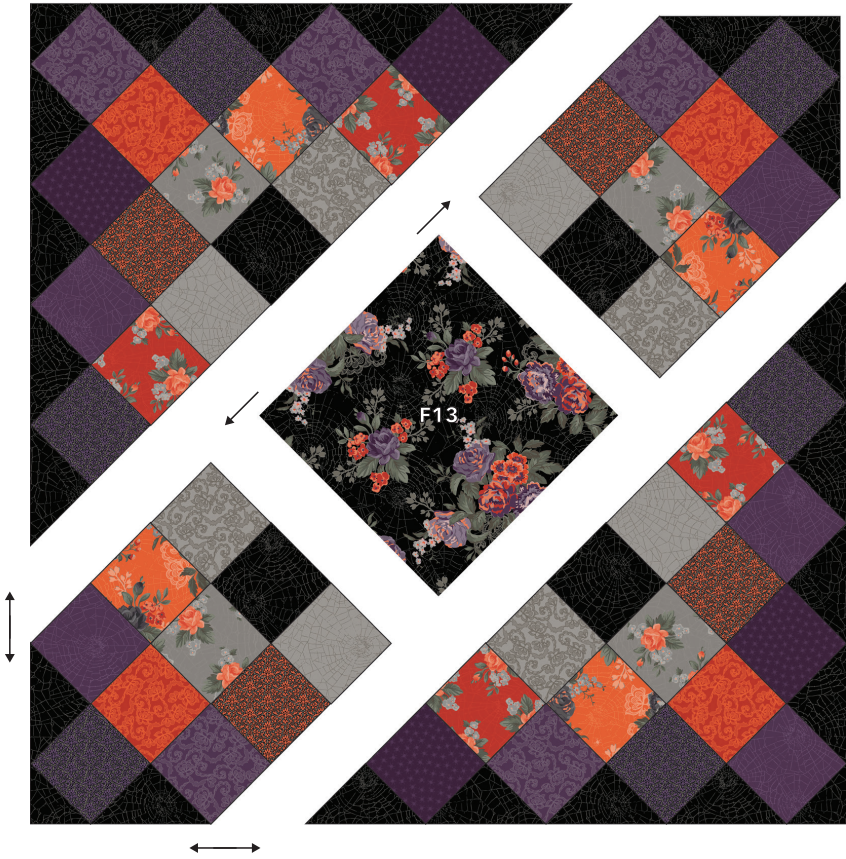
11. Sew row to row. Press in one direction. Make 2.

12. Sew the corner units to the top of the pyramid sections as shown. Press. Make 1 of each.



Assemble the Top Center Section

13. Arrange the sections in the layout illustrated below.
14. Sew the sections together. Press in the direction of arrows.



The top center section is 38-1/2" x 38-1/2" square.

Add the Borders

See p.7 for details

1. Pin the F12 inner side borders, RST, to the quilt top and sew together. Press.
2. Pin the F12 inner top and bottom borders, RST, to the quilt top and sew together. Press.
3. Pin the F14 outer side borders, RST, to the quilt top and sew together. Press.
4. Pin the F14 top and bottom borders, RST, to the quilt top and sew together. Press.

Tip: Mark the centers of the quilt top and borders. Pin the borders onto the top starting from the center and pinning out to the edge.



Finish it up.

1. Layer the backing (wrong side up), batting and quilt top (right side up). Baste layers to secure. Quilt as desired. Trim the excess backing and batting.
2. Sew the binding strips together into one continuous strip. Press in half length-wise. Sew the binding to the quilt top. Turn the binding to the back side of the quilt and stitch down by hand with matching thread.

Web of Roses Quilt Planning Diagram
Use the template below to plan your quilt.

