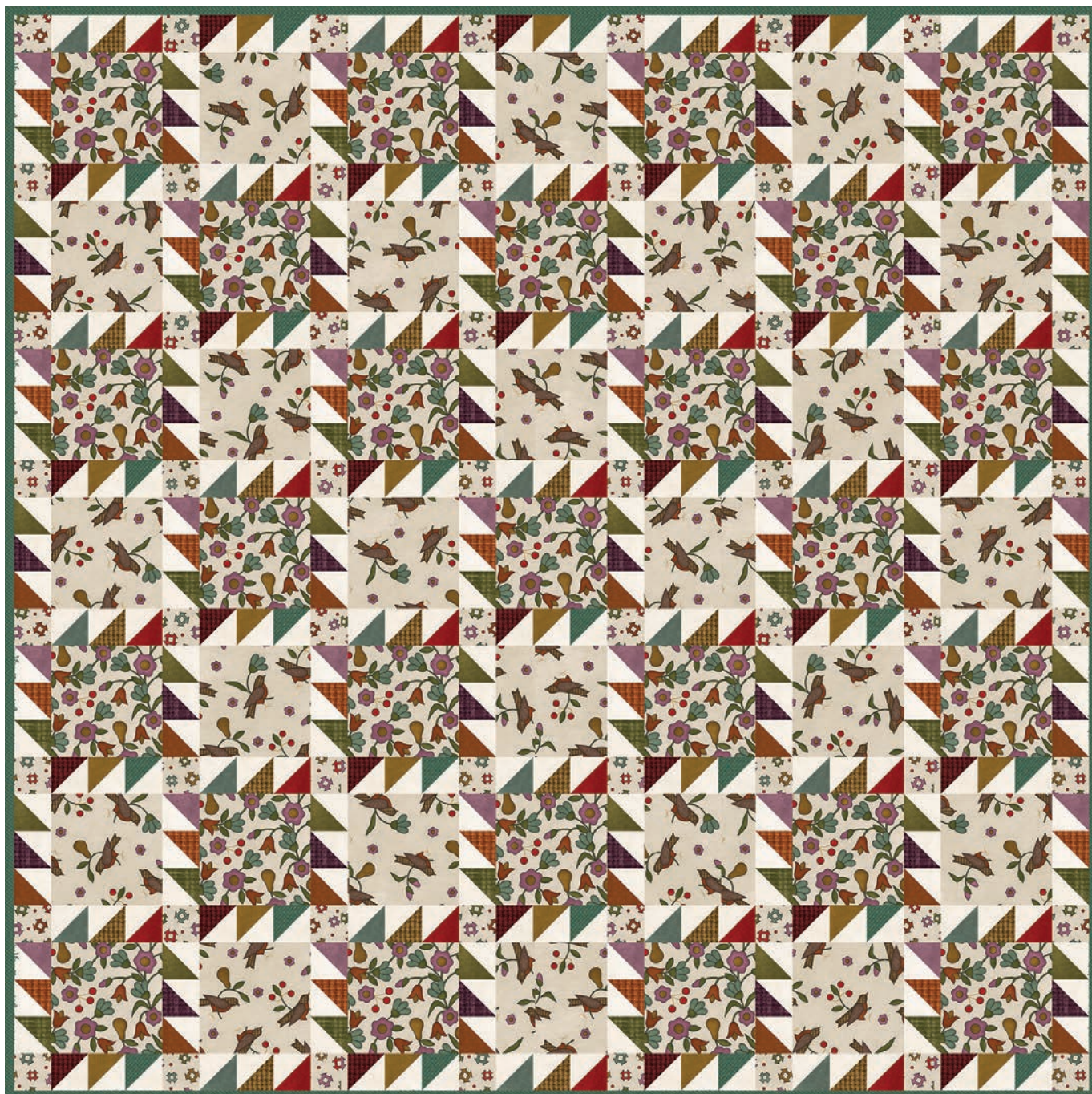


MAYWOOD  STUDIO

# Home Sweet Home Flannel Quilt

designed by Bonnie Sullivan



Home Sweet Home Flannel by Bonnie Sullivan for Maywood Studio

58" x 58" finished size

Confident Beginner ●○○

# MAYWOOD STUDIO

## Home Sweet Home Flannel

by Bonnie Sullivan



Fabric 1  
MASF9411-E



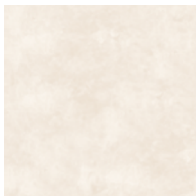
Fabric 2  
MASF9413-E



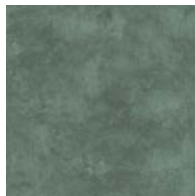
Fabric 3  
MASF9414-E

## COLORWASH Woolies Flannel

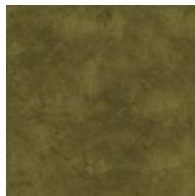
by Bonnie Sullivan



Fabric 4  
MASF9200-E



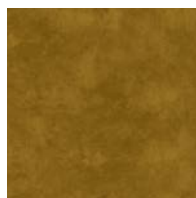
Fabric 5  
plus Binding  
MASF9200-Q



Fabric 6  
MASF9200-G2



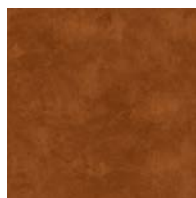
Fabric 7  
MASF9200-R



Fabric 8  
MASF9200-S



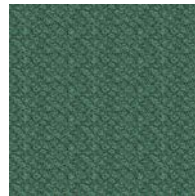
Fabric 9  
MASF9200-V2



Fabric 10  
MASF9200-O

## Woolies flannel

by Bonnie Sullivan



Fabric 11  
MASF18505-G2



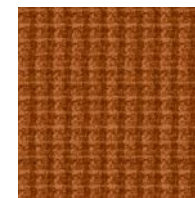
Fabric 12  
MASF18501-G



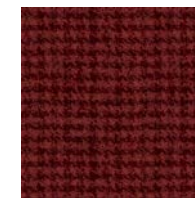
Fabric 13  
MASF18501-V



Fabric 14  
MASF18503-S



Fabric 15  
MASF18504-O



Fabric 16  
MASF18503-RJ



Finished Size 58" x 58"

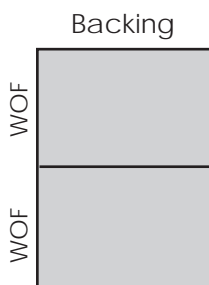
### Fabric Requirements

Fabric 1	MASF9411-E	1 yd
Fabric 2	MASF9413-E	1 yd
Fabric 3	MASF9414-E	1/3 yd
Fabric 4	MASF9200-E	1-1/4 yds
Fabric 5	MASF9200-Q	5/8 yd *includes binding
Fabric 6	MASF9200-G2	1/4 yd
Fabric 7	MASF9200-R	1/4 yd
Fabric 8	MASF9200-S	1/4 yd
Fabric 9	MASF9200-V2	1/4 yd
Fabric 10	MASF9200-O	1/4 yd
Fabric 10	MASF18505-G2	1/4 yd
Fabric 11	MASF18501-G	1/4 yd
Fabric 12	MASF18501-V	1/4 yd
Fabric 13	MASF18503-S	1/4 yd
Fabric 14	MASF18504-O	1/4 yd
Fabric 15	MASF18503-RJ	1/4 yd
Backing	your choice	4 yards

WOF - Width of Fabric  
RST - Right Sides Together  
HST - Half Square Triangle

### Backing

For non-directional fabric,  
cut length into (2) pieces and sew together



Maywood Studio makes every effort  
to make sure our patterns are accurate.  
Please visit [maywoodstudio.com](http://maywoodstudio.com)  
and check for project updates.

### Cutting

- Fabric 1**    **A** - Cut (5) 6-1/2" x WOF strips  
Subcut (25) 6-1/2" squares
- Fabric 2**    **B** - Cut (4) 6-1/2" x WOF strips  
Subcut (24) 6-1/2" squares
- Fabric 3**    **C** - Cut (4) 2-1/2" x WOF strips  
Subcut (64) 2-1/2" squares
- Fabric 4**    **D** - Cut (12) 3" WOF strips  
Subcut (168) 3" squares
- Fabric 5**    **E** - Cut (1) 3" WOF strip  
Subcut (14) 3" squares  
**Binding**  
cut (6) 2-1/2" x WOF strips
- Fabric 6**    **F** - Cut (1) 3" WOF strip  
Subcut (14) 3" squares
- Fabric 7**    **G** - Cut (1) 3" WOF strip  
Subcut (14) 3" squares
- Fabric 8**    **H** - Cut (1) 3" WOF strip  
Subcut (14) 3" squares
- Fabric 9**    **I** - Cut (1) 3" WOF strip  
Subcut (14) 3" squares
- Fabric 10**    **J** - Cut (1) 3" x WOF strip  
Subcut (14) 3" squares
- Fabric 11**    **K** - Cut (1) 3" WOF strip  
Subcut (14) 3" squares
- Fabric 12**    **L** - Cut (1) 3" WOF strip  
Subcut (14) 3" squares
- Fabric 13**    **M** - Cut (1) 3" WOF strip  
Subcut (14) 3" squares
- Fabric 14**    **N** - Cut (1) 3" WOF strip  
Subcut (14) 3" squares
- Fabric 15**    **O** - Cut (1) 3" WOF strip  
Subcut (14) 3" squares
- Fabric 16**    **P** - Cut (1) 3" WOF strip  
Subcut (14) 3" squares

## Home Sweet Home Flannel Quilt – by Bonnie Sullivan

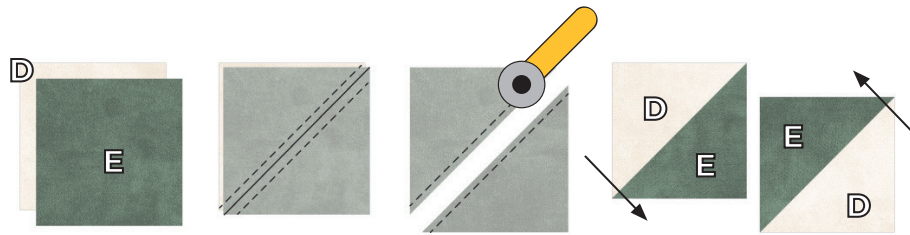
Please read all instructions before you begin. Seam allowance is 1/4" unless otherwise stated. Use a light sizing/starch on the squares before cutting triangles to help control stretching along the bias edges.

Follow arrows for pressing directions.

### Unit Assembly

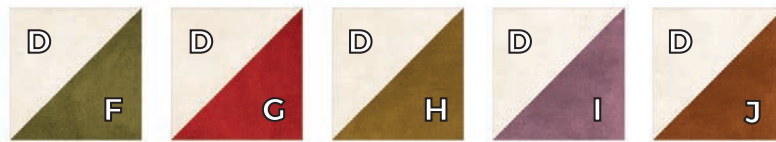
#### Make two-at-a-time Half Square Triangle (HST) units

1. Mark a diagonal line from corner to corner on the wrong side of a (Fabric 4) 3" D square. Place RST over a (Fabric 5) 3" E square. Sew 1/4" away from either side of the marked line. Trim on the marked line. Press away from Fabric 4. Trim to 2-1/2" square. Make 14 for a total of 28 HSTs.



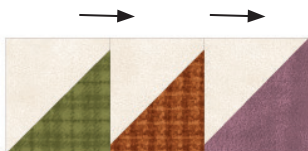
Make 14 for a total of 28 HSTs  
Trim to 2-1/2" square

2. Repeat step 1 to make the following HST units. Make 14 of each for a total of 28 HSTs.

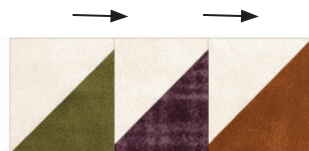


#### Sew the Half Square Triangle (HST) sets

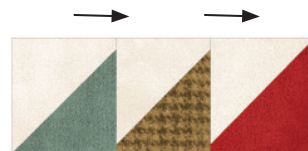
3. Sew the HSTs into sets of three as illustrated below. Make 28 of each set.



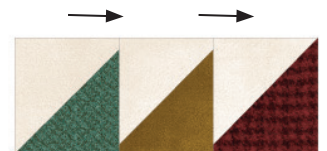
**HST Set 1**  
L-O-I  
Make 28



**HST Set 2**  
F-M-J  
Make 28



**HST Set 3**  
E-N-G  
Make 28



**HST Set 4**  
K-H-P  
Make 28

# Block Assembly

## Block 1

4. Sew the HST sets 1 and 2 to the sides of the Fabric 1 (A) squares, making sure to sew the HST 1 set to the left sides and the HST 2 sets to the right sides. Press.



5. Sew a Fabric 3 (C) square to either side of the HST 3 and 4 sets. Press. Sew the HST sets to the step 4 units making sure to sew the HST 3 set to the top and the HST 4 set to the bottom of the block. Press.



## Block 2

6. Sew a HST set 4 to the top and a HST set 3 to the bottom of a Fabric 2 (B) square. Press.



### Block 3

7. Sew a HST set 2 to the left side and a HST Set 1 to the right side of a Fabric 2 (B) square. Press.



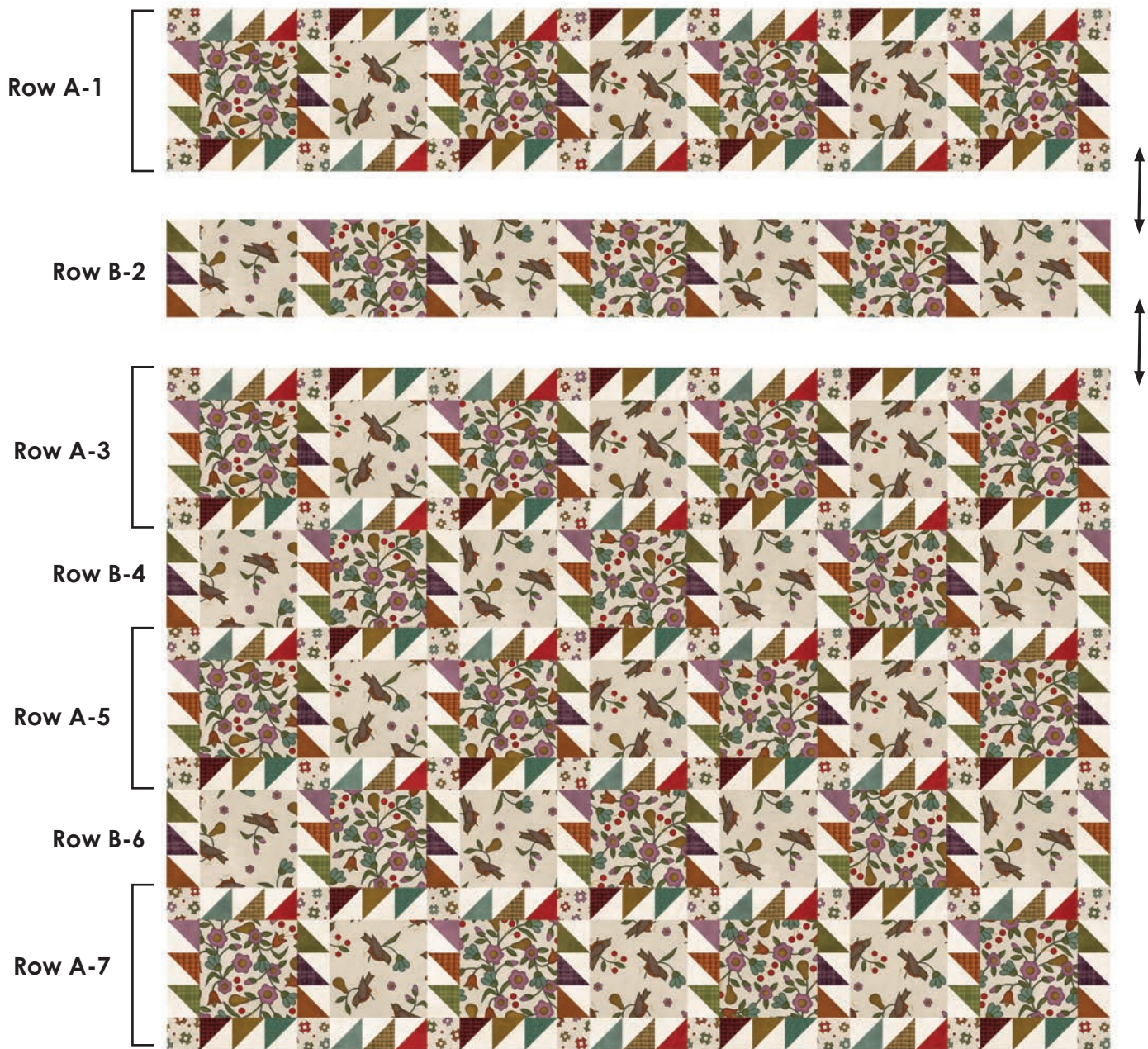
## Row Assembly

8. Sew the blocks into rows following the diagram below. To nest the seams, press in the direction of arrows



## Top Assembly

9. Sew row to row. Press open.



10. Layer the backing (wrong side up), batting and quilt top (right side up). Baste layers to secure.

11. Quilt as desired.

12. Sew the binding strips together into one continuous strip. Press in half length-wise. Sew the binding to the quilt top with a 3/8" seam allowance, mitering the corners. Trim the excess backing and batting, then turn the binding to the back side of the quilt and stitch down by hand with matching thread.

# Top Diagram

Try a different colorway and make it your own! Use this diagram to plan your project.

