

MAYWOOD  STUDIO

# Flower & Vine Quilt



**Flower & Vine Quilt by Monique Jacobs**  
featuring the Flower & Vine Collection

67 x 78"

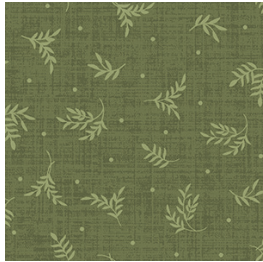
#madewithmaywood  
maywoodstudio.com



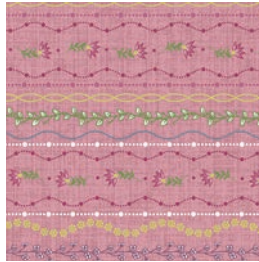
# MAYWOOD STUDIO



Linen  
9889-E



Green Branch  
9886-G



Pink Stripe  
9885-P



Scattered Blue  
Flower 9884-B



Green Berry  
9887-G



Large Pink Floral  
9880-P



Large Linen Floral  
9880-E



Medium Blue Floral  
9881-B



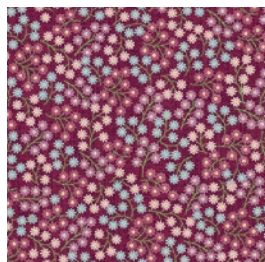
Linen Stripe  
9885-E



White Berry  
9887-E



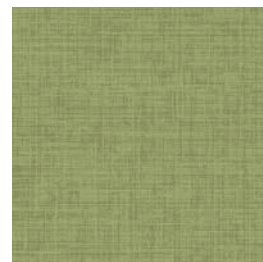
Large Burgundy  
Floral 9881-R



Small Burgundy  
Flower  
9888-R



Burgundy Leaf  
9883-R



Green Linen  
9889-G



Dark Blue Leaf  
9883-B



Burgundy Linen  
9889-R



Blue Border Stripe  
9882-B

## Fabric Requirements and Cutting Guide

R = reverse LOF = Length of Fabric (parallel to the selvage) WOF = Width of Fabric (perpendicular to the selvage)

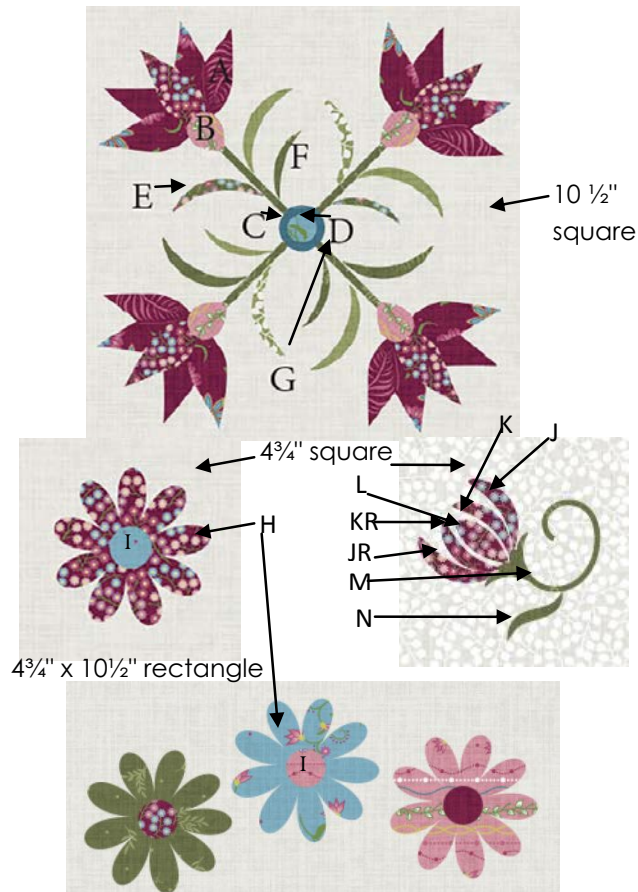
Fabric	Sku	Size	Piecing	Applique
Linen	9889-E	Fat Quarter	1 - 10 1/2" x 10 1/2" square 1 - 4 3/4" x 10 1/2" rectangle 2 - 4 3/4" squares	None
Green Branch	9886-G	Fat Quarter	1 - 10 1/2" x 10 1/2" square 1 - 4 3/4" x 10 1/2" rectangle 2 - 4 3/4" squares	8 - E, 4 - F, 4 - G, 2 - H, 1 - I, 3 - M & 3 - N
Pink Stripe	9885-P	Fat Quarter	1 - 10 1/2" x 10 1/2" square 1 - 4 3/4" x 10 1/2" rectangle 2 - 4 3/4" squares	4 - B, 1 - D, 3 - H, 4 - I
Scattered Blue Flower	9884-B	Fat Quarter	1 - 10 1/2" x 10 1/2" square 1 - 4 3/4" x 10 1/2" rectangle 4 - 4 3/4" squares	4 - B, 1 - D, 2 - H & 1 - I
Green Berry	9887-G	Fat Quarter	1 - 10 1/2" x 10 1/2" square 1 - 4 3/4" x 10 1/2" rectangle 2 - 4 3/4" squares	4 - E & 4 - F
Large Pink Floral	9880-P	Fat Quarter	1 - 10 1/2" x 10 1/2" square 1 - 4 3/4" x 10 1/2" rectangle 2 - 4 3/4" squares	None
Large Linen Floral	9880-E	Fat Quarter	1 - 10 1/2" x 10 1/2" square 1 - 4 3/4" x 10 1/2" rectangle 2 - 4 3/4" squares	None
Medium Blue Floral	9881-B	Fat quarter	1 - 10 1/2" x 10 1/2" square 1 - 4 3/4" x 10 1/2" rectangle 2 - 4 3/4" squares	12 - A, 1 - H, 1 - J, 1 - JR, 1 - K, 1 - KR & 1 - L
Linen Stripe	9885-E	Fat Quarter	1 - 10 1/2" x 10 1/2" square 1 - 4 3/4" x 10 1/2" rectangle 2 - 4 3/4" squares	None
White Berry	9887-E	Fat Quarter	1 - 10 1/2" x 10 1/2" square 1 - 4 3/4" x 10 1/2" rectangle 1 - 4 3/4" square	1 - H, 1 - I, 1 - J, 1 - JR, 1 - K, 1 - KR & 1 - L
Large Burgundy Floral	9881-R	3" x 10"	None	8 - A
Small Burgundy Flower	9888-R	6" x 10"	None	4 - A, 1 - H, 2 - I, 1 - J, 1 - JR, 1 - K, 1 - KR & 1 - L
Burgundy Leaf	9883-R	5" x 10"	None	8 - A, 1 - C, 1 - I
Green Linen	9889-G	3" x 5"	None	4 - E
Dark Blue Leaf	9883-B	5" x 10"	None	8 - A & 1 - C
Burgundy Linen	9889-R	2 yards	From the accent fabric, cut: 20 - 2" x WOF strips, into: 25 - 2" x 10 1/2" rectangles 10 - 2" x 4 3/4" rectangles Cut and piece remaining to make: 2 - 2" x 56 1/2" strips for inner side borders 2 - 2" x 48" strips for top and bottom inner border 4 - 2" x 45" sashing strips 8 - 2 1/2" x WOF binding strips	
Blue Border Stripe	9882-B	2 1/2 yards	Cut: 4 - 10" x <b>LOF</b> strips	
Backing	Your Choice	4 1/2 yards		
Fusible Webbing		5/8 yard		

Please note: There is an alternate cutting guide for a version with the blue stripe at the end of this pattern.

## Applique:

On the paper side of the fusible webbing, draw the applique pieces per the following: 40 - A, 8 - B, 2 - C, 2 - D, 16 - E, 8 - F, 4 - G, 10 - H, 10 - I, 3 - J, 3 - JR, 3 - K, 3 - KR, 3 - L, 3 - M and 3 - N. Cut roughly around the shapes and fuse to the back of the fabrics per chart. Cut each out exactly on the line.

Following the diagrams and quilt assembly, fuse the pieces in place and applique using your favorite applique method.



**Piecing:** If you are using directional fabric, plan your layout so that the directions are correct and place the applique where you would like it.

1. Sew a 2" x 4 3/4" rectangle of accent fabric between two 4 3/4" squares of different fabrics. Sew a 2" x 10 1/2" rectangle of accent fabric to one long side. Sew a 4 3/4" x 10 1/2" rectangle of a third fabric to the piece. Press all seams towards the accent fabric. The block should measure 10 1/2" square. Repeat to make a total of 10.



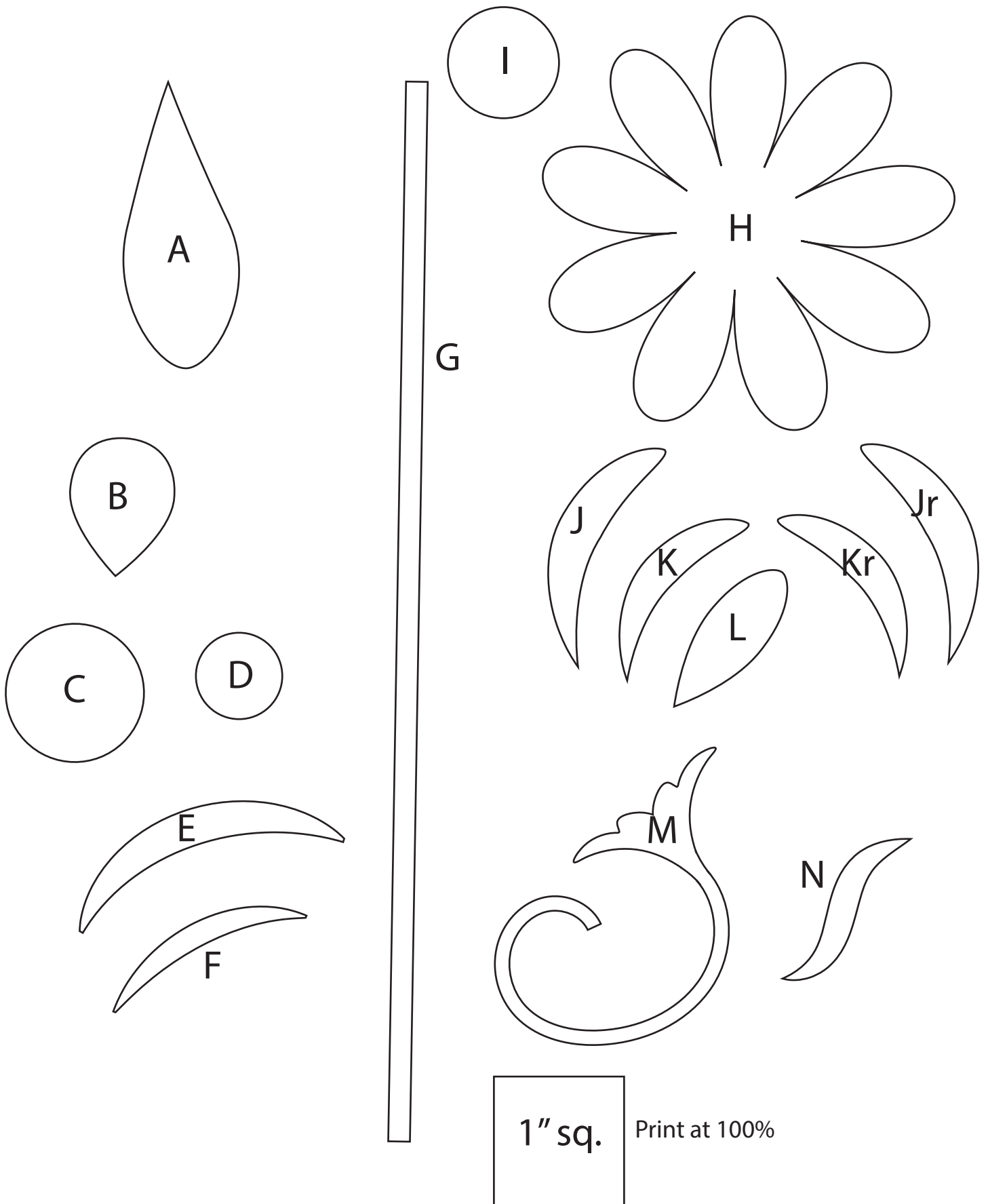
2. Lay out the 10 1/2" squares of fabrics, the 2" x 10 1/2" rectangles of accent fabric, the blocks from step 1 and the 2" x 4 5/8" sashing strips in rows. Sew pieced rows together and press towards the accent fabric. Sew the sashing strips and pieced rows together and press towards the sashing strips.

3. Sew on the inner borders, pressing towards the borders as you add them. Miter the outer borders and press towards the borders as you add them.



4. Quilt, bind and enjoy!

Applique Pieces

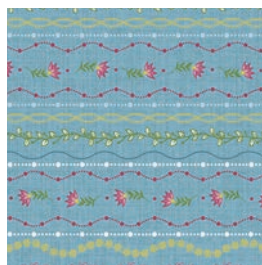




This is an alternate layout that uses the 9885-P blue stripe that Monique showed in her Quilt Along. For more details visit [opengatequilts.com](http://opengatequilts.com)

Follow the cutting instructions on P.7 if you want to make this quilt top.

*9885-P is not included in the quilt kit KIT-MASFLV.*



Blue Stripe  
9885-B

## Fabric Requirements and Cutting Guide for Blue Stripe Version

R = reverse LOF = Length of Fabric (parallel to the selvage) WOF = Width of Fabric (perpendicular to the selvage)

Fabric	Sku	Size	Piecing	Applique
Linen	9889-E	Fat Quarter	1 - 10 1/2" x 10 1/2" square 1 - 4 3/4" x 10 1/2" rectangle 2 - 4 3/4" squares	None
Green Branch	9886-G	Fat Quarter	1 - 10 1/2" x 10 1/2" square 1 - 4 3/4" x 10 1/2" rectangle 2 - 4 3/4" squares	8 - E, 4 - F, 4 - G, 2 - H, 1 - I, 3 - M & 3 - N
Pink Stripe	9885-P	Fat Quarter	1 - 10 1/2" x 10 1/2" square 1 - 4 3/4" x 10 1/2" rectangle 2 - 4 3/4" squares	4 - B, 1 - D, 3 - H, 4 - I
Blue Stripe	9885-B	Fat Quarter	1 - 10 1/2" x 10 1/2" square 1 - 4 3/4" x 10 1/2" rectangle 2 - 4 3/4" squares	None
Green Berry	9887-G	Fat Quarter	1 - 10 1/2" x 10 1/2" square 1 - 4 3/4" x 10 1/2" rectangle 2 - 4 3/4" squares	4 - E & 4 - F
Large Pink Floral	9880-P	Fat Quarter	1 - 10 1/2" x 10 1/2" square 1 - 4 3/4" x 10 1/2" rectangle 2 - 4 3/4" squares	None
Large Linen Floral	9880-E	Fat Quarter	1 - 10 1/2" x 10 1/2" square 1 - 4 3/4" x 10 1/2" rectangle 2 - 4 3/4" squares	None
Medium Blue Floral	9881-B	Fat quarter	1 - 10 1/2" x 10 1/2" square 1 - 4 3/4" x 10 1/2" rectangle 2 - 4 3/4" squares	12 - A, 1 - H, 1 - J, 1 - JR, 1 - K, 1 - KR & 1 - L
Linen Stripe	9885-E	Fat Quarter	1 - 10 1/2" x 10 1/2" square 1 - 4 3/4" x 10 1/2" rectangle 2 - 4 3/4" squares	None
White Berry	9887-E	Fat Quarter	1 - 10 1/2" x 10 1/2" square 1 - 4 3/4" x 10 1/2" rectangle 1 - 4 3/4" square	1 - H, 1 - I, 1 - J, 1 - JR, 1 - K, 1 - KR & 1 - L
Large Burgundy Floral	9881-R	3" x 10"	None	8 - A
Small Burgundy Flower	9888-R	6" x 10"	None	4 - A, 1 - H, 2 - I, 1 - J, 1 - JR, 1 - K, 1 - KR & 1 - L
Burgundy Leaf	9883-R	5" x 10"	None	8 - A, 1 - C, 1 - I
Green Linen	9889-G	3" x 5"	None	4 - E
Dark Blue Leaf	9883-B	5" x 10"	None	8 - A & 1 - C
Scattered Blue Flower	9884-B	5" x 21"	1 - 4 3/4" square	4 - B, 1 - D, 2 - H & 1 - I
Burgundy Linen	9889-R	2 yards	From the accent fabric, cut: 20 - 2" x WOF strips, into: 25 - 2" x 10 1/2" rectangles 10 - 2" x 4 3/4" rectangles Cut and piece remaining to make: 2 - 2" x 56 1/2" strips for inner side borders 2 - 2" x 48" strips for top and bottom inner border 4 - 2" x 45" sashing strips 8 - 2 1/2" x WOF binding strips	
Blue Border Stripe	9882-B	2 1/2 yards	Cut: 4 - 10" x <b>LOF</b> strips	
Backing	Your Choice	4 1/2 yards		
Fusible Webbing		5/8 yard		

# Flower & Vine Quilt Planning Diagram

