

MAYWOOD  STUDIO

EVERGREEN BOWS QUILT



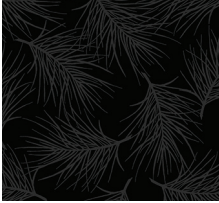
Evergreen Bows Quilt

featuring the Evergreen Bows Collection from Maywood Studio

61" x 75"

maywoodstudio.com

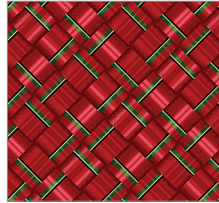
EVERGREEN BOWS



Fabric 1
M10187-J



Fabric 2
M10188-R2



Fabric 3 + Binding
M10186-R



Fabric 4
M10188-J



Fabric 5
M10184-R

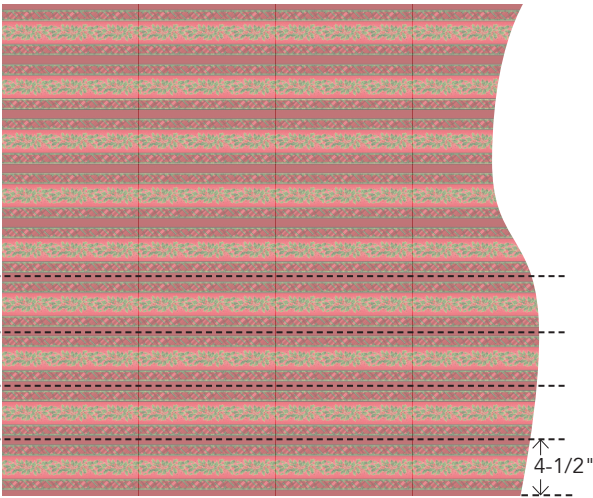


Fabric 6
M10181-J



Panel M10180-J

Cut the stripes along the Length of the Fabric (LOF)



MAYWOOD  STUDIO

Maywood Studio makes every effort to make sure our patterns are accurate.
Check for updates at maywoodstudio.com/projects

Fabric Requirements

Fabric 1	10187-J	1
Fabric 2	M10188-R2	1/2
Fabric 3	M10186-R	1 yard
Fabric 4	M10188-J	5/8
Fabric 5	M10184-R	1-3/4 yards
Fabric 6	M10181-J	1-1/8 yard
Panel	M10180-J	1 panel
Backing	108" wide	2 yards
	44/45" wide	4 yards

WOF - Width of Fabric
 LOF - Length of Fabric
 RST - Right Sides Together
 HST - Half Square Triangle



Cutting

Finished Size: 61" x 75"

Fabric 1 - black pine needles

Cut (2) 5" x WOF strips. Subcut into:

A: (2) 4-1/2" x 4-1/2" squares

B: (10) 5" x 5" squares

Cut (2) 2" x WOF strips. Subcut into

(2) 2" x 28-1/2" top and bottom borders

Cut (2) 1-1/2" x WOF strips. Subcut into

(2) 1-1/2" x 39-1/2" side borders

Cut (5) 2-1/2" x WOF strips. Sew 3 strips together, end to end. Subcut into (2) 2-1/2" x 49-1/2" strips.

From the remaining 2 strips subcut (2) 2-1/2" x 39-1/2" strips.

Fabric 2 - red and gold dots

Cut (3) 4-1/2" x WOF strips. Subcut into:

C: (22) 4-1/2" x 4-1/2" squares

Fabric 3 - red ribbon plaid

Cut (2) 5" x WOF strips. Subcut into:

D: (10) 5" x 5" squares

Binding

Cut (7) 2-1/4" x WOF strips

Fabric 4 - black and gold dots

(1) 4-1/2" x WOF strip. Subcut into

E: (4) 4-1/2" x 4-1/2" squares

(6) 2-1/2" x WOF strips. Sew together into one continuous strip. Subcut into:

(2) 2-1/2" x 61-1/2" side borders

(2) 2-1/2" x 51-1/2" top and bottom borders

Fabric 5 - red stripes

Cut LOF - See illustration on p.2

(2) 4-1/2" x 53-1/2" side strips

(2) 4-1/2" x 47-1/2" top/bottom strips

Fabric 6 - outer borders

Cut (7) 5-1/2" x WOF strips. Sew together into one continuous strip. Subcut into:

(2) 5-1/2" x 65-1/2" side borders

(2) 5-1/2" x 61-1/2" top and bottom borders

Panel

Fussy cut to measure 26-1/2 x 39-1/2"

Evergreen Bows Quilt Instructions

Please read all instructions before you begin. Seam allowance is 1/4. Fabric is abbreviated as 'F' - for example, F1 refers to Fabric 1. Press in the direction of arrows.

Use the check boxes to mark each step as you complete it.

Half Square Triangles (HST)

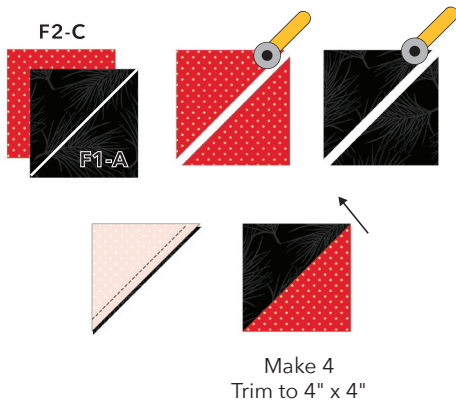
Gather the F1-A and F2-C squares.

1. Mark a diagonal line from corner to corner on the wrong side of the F1-A and F2-C squares. Cut in half on the marked line.

2. Place a F2-C triangle, RST, on an F1-A triangle. Sew together with a 1/4" seam allowance. Press toward F1. Make 4.

3. Trim to 4" x 4"

Reserve the extra F2-C triangles for the Split HSTs.



Split - Half Square Triangles (HST)

Gather (40) F1-C triangles and the (10) F1-B and F3-D squares.

You will be making mirror image blocks.

1. Mark an "X" by drawing two diagonal lines from corner to corner on the wrong side of the F2-B and F3-D squares. Cut into quarters.

2. Left: Sew (20) F1-B and F3-D triangles together. Press toward B.

3. Right: Sew (20) F1-B and F3-D triangles together. Press toward B.

4. Place a F2-C triangle, RST, on a Left BD unit. Sew together. Repeat to make 20 left and 20 right split-half square.

5. Trim to a 4" x 4" square.

Tip: Use your ruler to center the F1-B and F3-D intersection at the 2" mark before trimming.



Ribbon Border

Gather the HSTs and the left and right Split HSTs

Top and Bottom Ribbon Borders

1. Lay the units out as illustrated below, turning as needed.
2. Sew two of each left and right sections. Press open.
3. Sew the left and right sections together. Make 2. Press open.



Make 2 Left Sections
4" x 18"



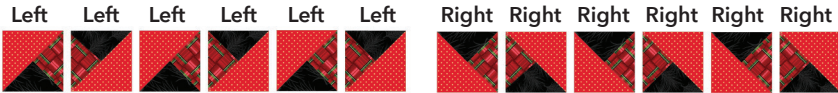
Make 2 Right Sections
4" x 18"



Make 2: Use for 1 Top and 1 Bottom Ribbon Border.
4" x 35-1/2"

Side Ribbon Borders

4. Lay the units out as illustrated below, turning as needed.
5. Sew two of each left and right sections. Press seam allowance open.
6. Sew the left and right sections together. Make 2. Press open.



Make 2 Left Sections
4" x 21-1/2"



Make 2 Right Sections
4" x 21-1/2"



Make 2: Side Ribbon Borders
4" x 42-1/2"

Stripe Borders

- ❑ 1. Mark a diagonal line from corner to corner on the F4-E squares.
- ❑ 2. Lay the F4-E squares, RST, on each end of the F5-4-1/2" x 47-1/2" borders. Pin.
- ❑ 3. Sew on the marked line.
- ❑ 4. Cut away the F4-E corners 1/4" away from the sewn line. Make 2. Press.



F5 Border - 4-1/2" x 47-1/2"



Borders: Sew each round of borders as illustrated. Sew the side borders to the quilt first and then the top and bottom borders. Press toward the borders as you work your way around the quilt top. Tip: Pin the borders to the quilt top starting at the center and pinning out to the edge for each round. This will help to make sure you don't stretch the borders as you sew. This section will finish at 39-1/2" x 53-1/2".





Border Measurements

Panel: fussy cut to 26-1/2" x 39-1/2"

Round 1: F1 Inner Borders (2) 2" x 28-1/2", (2) 1-1/2" x 39-1/2"

Round 2: Ribbon Borders (2) 4" x 35-1/2", (2) 4" x 42-1/2"

Round 3: F1 Outer Borders (2) 2-1/2" x 39-1/2", (2) 2-1/2" x 49-1/2"

Top center should measure 39-1/2" x 53-1/2" at this point.

Round 4: F5-Stripe (2) 4-1/2" x 47-1/2", (2) 4-1/2" x 53-1/2"

Round 5: F4 (2) 2-1/2" x 61-1/2", (2) 2-1/2" x 51-1/2"

Round 6: F6 (2) 5-1/2" x 65-1/2", (2) 5-1/2" x 61-1/2"

Finishing

- ❑ 1. Layer the backing (wrong side up), batting and quilt top (right side up). Baste layers to secure. Quilt as desired. Trim the excess backing and batting.
- ❑ 2. Sew the binding strips together into one continuous strip. Press in half length-wise. Sew the binding to the quilt top with a 1/4" seam allowance. Turn the binding to the back side of the quilt and stitch down by hand with matching thread.

Quilt Planning Diagram

Use this diagram to plan your quilt top.

