



BROCHURE + RRP PRICE LIST

AS SEEN ON



WHY PENTABLOCK?

UP TO 30% CHEAPER & 75% FASTER
TO CONSTRUCT THAN A TRADITIONAL BESSER BLOCK WALL

-  **DIY FRIENDLY AND EASY TO INSTALL**
-  **INNOVATIVE DRY RACK SYSTEM**
-  **HANDCRAFTED NATURAL STONE EXTERIOR**
-  **UNIQUE INTERLOCKING DESIGN**
-  **NO MORTAR OR CLADDING REQUIRED**
-  **MINIMAL CLEAN-UP REQUIRED**
-  **FIRE RATING OF 4 HOURS**
-  **CYCLONE RATED**

NEW vs OLD

Unlike traditional beeser block walls, which require mortar and labor-intensive installation, Pentablock blocks interlock easily and securely without any glue or cement. This means it's faster, easier, and much cheaper to construct than traditional methods. *You don't need to hire a Professional Blocky or a Stone Mason.*



SAVE UP TO 16%



PENTABLOCK RAW DRY RACK SYSTEM

\$470 - \$500 per sq/m

PentaBlock RAW - \$145
Installation - \$325 - \$355
4-5 Days to complete

BESSER BLOCK PLAIN CONCRETE FINISH

\$560 - \$600 per sq/m

Besser Blocks - \$60
Installation - \$500 - \$540
5-7 Days to complete



SAVE UP TO 30%



PENTABLOCK STONE FACE DRY RACK SYSTEM

\$750 - \$900 per sq/m

PentaBlock Stone Face - \$370 - \$420
Installation - \$380 - \$480
4-5 Days to complete

BESSER BLOCK WITH ADDED LEDGESTONE

\$915 - \$1230 per sq/m

Besser Blocks - \$60 - \$100
Stone Cladding - \$100 - \$180
Installation - \$755 - \$950
8-10 Days to complete



STONE FACE PENTABLOCK DRY RACK SYSTEM



PLAIN BESSER BLOCK WITH MORTAR

Based off 20m x 1m (soil type c). Days include drying time of footing, mortar & corefill. Installation includes labour, prep, footing, core fill, mortaring and cladding where applicable.



SHOP NOW



HOW DOES IT WORK?

PentaBlock blocks are easy to install without mortar, thanks to their unique dry stack system and simple rebate joint.

To install PentaBlock blocks, follow these steps:

1. Prepare a level base footing from concrete or sand, and check it with a long straight level.
2. Place your first row of PentaBlock blocks on the base footing, and make sure they are aligned and have no gaps between them. You can use a rubber mallet to adjust them if needed.
3. Stack the rest of the PentaBlock blocks on top of the first row, and use a rubber mallet to fit them snugly together.
4. If necessary, fill the cavities with corefill/concrete. You can find the engineering document for up to 1.6m high structures on our website's product pages.



DAYS TO INSTALL A WALL WITH STONE VENEER

PENTABLOCK STONE FACE



BESSER BLOCK WITH STONE CLADDING



**CUT YOUR BUILD TIME
TIME IN HALF**

■ POUR FOOTING

■ FOOTING CURING TIME

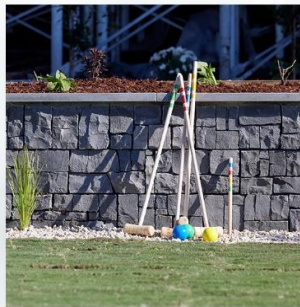
■ INSTALL BLOCKS & STEEL

■ MORTAR SETTING TIME

■ COREFILL & SETTING TIME

■ STONEMASON

PERFECT FOR RETAINING WALLS, FEATURE WALLS, FIRE PITS, FENCES, PILLARS, GARDENS AND POOL AREAS.



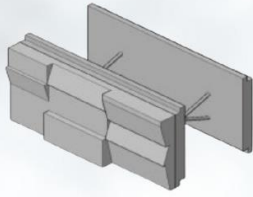
WANT TO SEE IT IN ACTION?

SCAN HERE



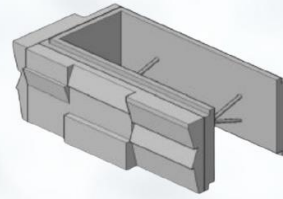
PENTABLOCK TECHNICAL SIZES

STONE SERIES: BLOCK SIZES



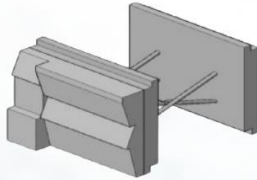
FULL BLOCK

165 SERIES
length: 405
width: 165
height: 205
internal: 100
+stone



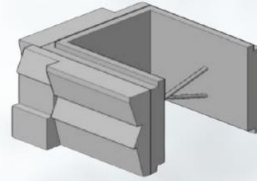
FULL CORNER (L&R)

165 SERIES
length: 363
width: 165
height: 205
internal: 100
+stone



HALF BLOCK

165 SERIES
length: 202
width: 165
height: 205
internal: 100
+stone



HALF CORNER (L&R)

165 SERIES
length: 202
width: 165
height: 205
internal: 100
+stone

STONE SERIES: COLOUR RANGE



MELBOURNE



SORRENTO

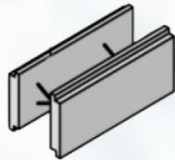


NEWCASTLE



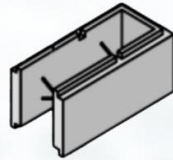
GRAMPIANS

RAW SERIES: BLOCK SIZES



FULL BLOCK

165 SERIES
length: 405
width: 165
height: 205
internal: 100



FULL END

165 SERIES
length: 363
width: 165
height: 205
internal: 100



HALF BLOCK

165 SERIES
length: 202
width: 165
height: 205
internal: 100



HALF END

165 SERIES
length: 202
width: 165
height: 205
internal: 100



SHOP NOW



WALL CAPPING



STRAIGHT

length: 1000
width: 250
height: 35

PILLAR

length: 600
width: 600
height: 35

Available in:
Grey Granite
White Granite
Bluestone

LEDGESTONE

STRAIGHT

length: 600
width: 150
height: 35



Available in:
Melbourne
Grampians
Fink

AusLS SKU	PRODUCT DESCRIPTION	SIZE (mm) LXWXH	UNITS/m2	RRP + Gst	RRP Incl	RRP Incl /m2
RAW Block Range						
PEN-RAW-FB	165 Raw block full block	405x165x205	12.05	\$12.05	\$13.26	\$159.72
PEN-RAW-HB	165 Raw block half block	102x165x205	24.39	\$9.49	\$10.44	
PEN-RAW-FE	165 Raw block full end block	363x165x205	9.26	\$12.05	\$13.26	
PEN-RAW-HE	165 Raw block half end block	165x165x205	14.71	\$9.49	\$10.44	
Grampians (Limestone)						
PEN-GRA-FB	165 Stone single side full block - Grampians	405x165x205	12.05	\$29.95	\$32.95	\$396.99
PEN-GRA-HB	165 Stone single side half block - Grampians	202x165x205	24.39	\$20.95	\$23.05	
PEN-GRA-FL	165 Stone single side end block left (corner) - Grampians	363x165x205	9.26	\$39.95	\$43.95	
PEN-GRA-FR	165 Stone single side end block right (corner) - Grampians	363x165x205	9.26	\$39.95	\$43.95	
PEN-GRA-HL	165 Stone single side half end block left(corner) - Grampians	165x165x205	14.71	\$26.95	\$29.65	
PEN-GRA-HR	165 Stone single side half end block right(corner) - Grampians	165x165x205	14.71	\$26.95	\$29.65	
Newcastle						
PEN-NEW-FB	165 Stone single side full block - Newcastle	405x165x205	12.05	\$29.95	\$32.95	\$396.99
PEN-NEW-HB	165 Stone single side half block - Newcastle	202x165x205	24.39	\$20.95	\$23.05	
PEN-NEW-FL	165 Stone single side end block left (corner) - Newcastle	363x165x205	9.26	\$39.95	\$43.95	
PEN-NEW-FR	165 Stone single side end block right (corner) - Newcastle	363x165x205	9.26	\$39.95	\$43.95	
PEN-NEW-HL	165 Stone single side half end block left(corner) - Newcastle	165x165x205	14.71	\$26.95	\$29.65	
PEN-NEW-HR	165 Stone single side half end block right(corner) - Newcastle	165x165x205	14.71	\$26.95	\$29.65	
Melbourne						
PEN-MEL-FB	165 Stone single side full block - Melbourne	405x165x205	12.05	\$34.95	\$38.45	\$463.26
PEN-MEL-HB	165 Stone single side half block - Melbourne	202x165x205	24.39	\$22.45	\$24.70	
PEN-MEL-FL	165 Stone single side end block left (corner) - Melbourne	363x165x205	9.26	\$44.50	\$48.95	
PEN-MEL-FR	165 Stone single side end block right (corner) - Melbourne	363x165x205	9.26	\$44.50	\$48.95	
PEN-MEL-HL	165 Stone single side half end block left(corner) - Melbourne	165x165x205	14.71	\$27.95	\$30.75	
PEN-MEL-HR	165 Stone single side half end block right(corner) - Melbourne	165x165x205	14.71	\$27.95	\$30.75	
Sorrento						
PEN-SOR-FB	165 Stone single side full block - Sorrento	405x165x205	12.05	\$34.95	\$38.45	\$463.26
PEN-SOR-HB	165 Stone single side half block - Sorrento	202x165x205	24.39	\$22.45	\$24.70	
PEN-SOR-FL	165 Stone single side end block left (corner) - Sorrento	363x165x205	9.26	\$44.50	\$48.95	
PEN-SOR-FR	165 Stone single side end block right (corner) - Sorrento	363x165x205	9.26	\$44.50	\$48.95	
PEN-SOR-HL	165 Stone single side half end block left(corner) - Sorrento	165x165x205	14.71	\$27.95	\$30.75	
PEN-SOR-HR	165 Stone single side half end block right(corner) - Sorrento	165x165x205	14.71	\$27.95	\$30.75	
Capping						
PEN-CAP-BSWC	1m cap pencil edge Bluestone	1000x260x40	3.84	\$69.95	\$76.95	\$295.47
PEN-CAP-BSPC	Pillar Cap - Bluestone	680x680x40	2.16	\$98.00	\$107.80	
PEN-CAP-GGWC	1m cap pencil edge - Golden Graphite	1000x260x40	3.84	\$69.95	\$76.95	\$295.47
PEN-CAP-GGPC	Pillar Cap - Golden Graphite	680x680x40	2.16	\$98.00	\$107.80	
PEN-CAP-BSST	Stepread cap Bluestone	1000x260x40	3.84	\$98.00	\$107.80	

