

Series SSSH: Sanitary Stainless-Steel Housings INLINE GAS HOUSING



INTRODUCTION

Our Sanitary Single Element Gas Housings are designed for high-purity applications and to meet your critical processing needs.

These gas housings are commonly used in the Food & Beverage and Pharmaceutical industries. Housings exceed standards for sterile filtration. The 316L Stainless Steel housings have been designed to meet ASME BPE. The highly polished corrosive-resistant material is ideal because of its superior strength and chemical compatibility.

These gas housings can accept one 2.75-inch diameter 226 O-ring filter configuration of various lengths. The 226 connections guarantee proper sealing preventing fluid bypass. Housings are designed for complete disassembly, allowing full access to all internal surfaces for easy cleaning. No special tools are required to open and close the housing due to it being sealed by a Tri-clamp.

FEATURES

- *Aseptic Design*
- *Electro-Polished*
- *Cartridge Stop*
- *Maximize Product Recovery*
- *Easy to use low point drain valve*
- *Machined Cartridge Connection Lock Options*

APPLICATIONS

- *Food & Beverage*
- *Aggressive Gas Application*
- *High Purity Gas Processing*
- *Pharmaceuticals*
- *High-Pressure Gas Filtration*
- *Microorganism Removal from Air*

BENEFITS:

- *No Dead Legs*
- *Fully Self-draining*
- *Seamless of filter change-out*
- *Removable for Cleanability*
- *Maximize Product Recovery*
- *Crevice Free Electropolished surfaces with 16 RA internal surfaces*

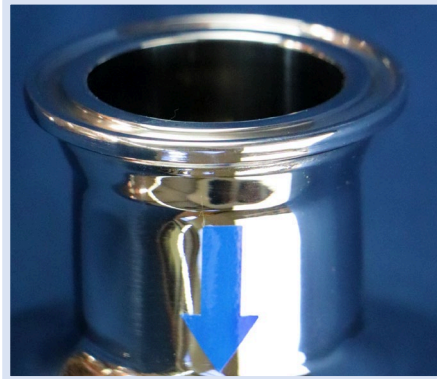
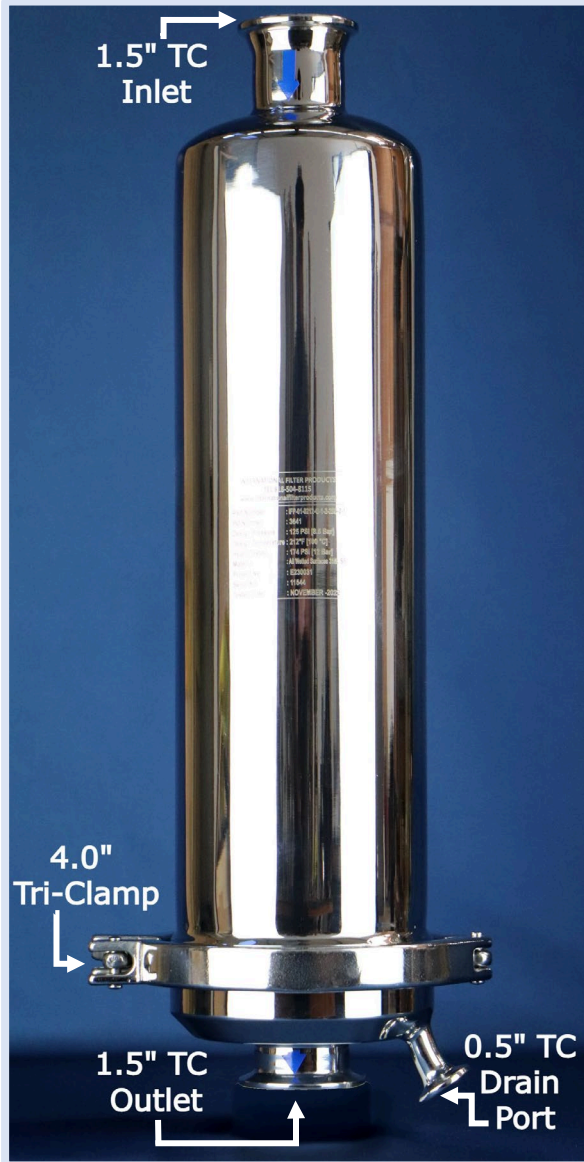


International Filter Products
Revolutionary systems for your industry



7914 Ajay Drive, Sun Valley, CA 91352
www.internationalfilterproducts.com
sales@internationalfilterproducts.com
Phone: (818) 504-8115

Series SSSH



External Design Features –

IFP's Sanitary Single Element Gas Filter Housings have a simple and convenient aseptic design. The tri-clamp that fixes the dome to the base provides simplicity when filter changes or inspecting filter housing seals are required. The filter housing is equipped with one (0.5" TC) drain port, which allows complete drainage of the housing to be achieved. The tri-clamp connection at the top of the housing dome is the inlet of the housing and the tri-clamp connection at the bottom of the base is the outlet. These ports are 1.5-inch connections.

As shown in the photos, the external design feature of our single-element filter housings

Internal Design Features –

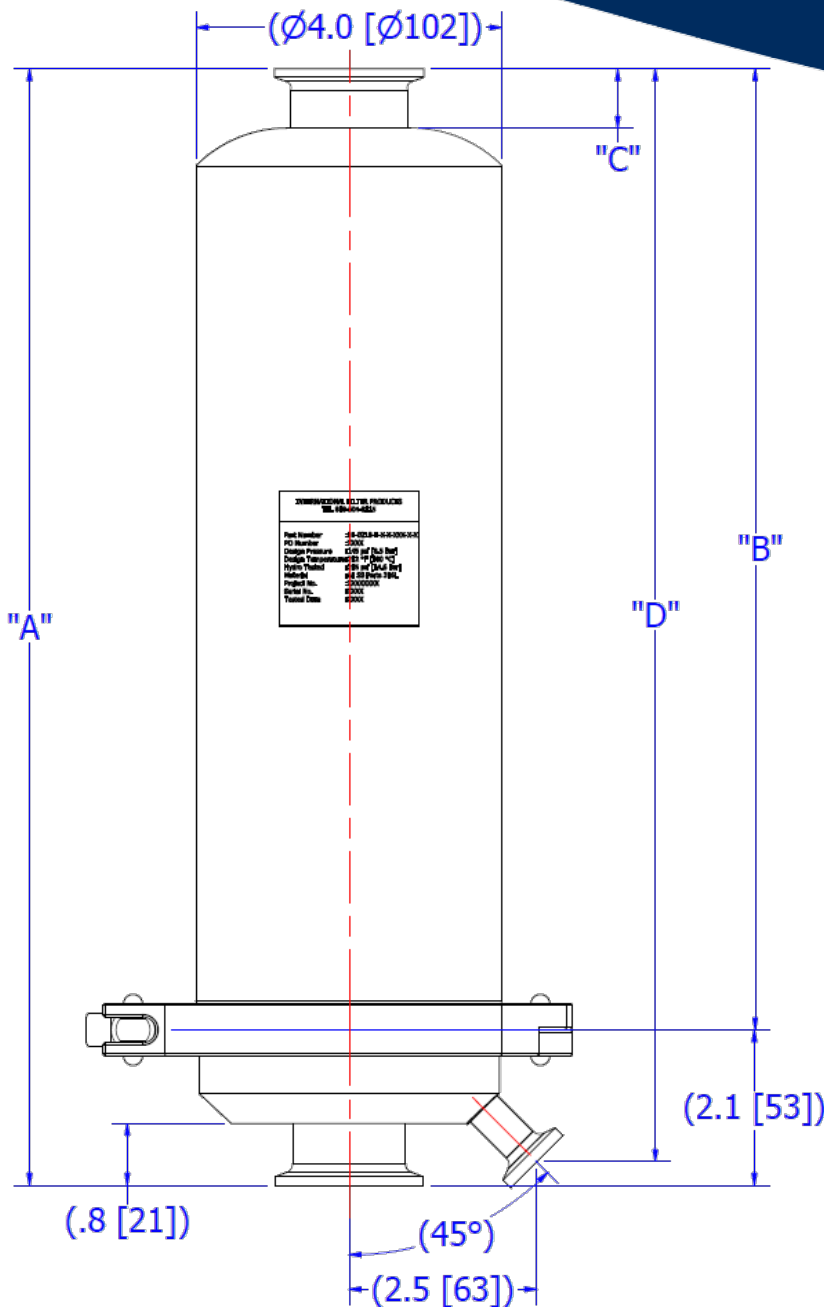
The objective of our Engineers was to design filter housing that is aseptic and convenient to use. Once the tri-clamp is removed the user can remove the lightweight dome, accessing the internal components. At the base, there is a 226 Cartridge slot with Lock tabs. Stops were placed to ensure tabs stay within the tab slots. This connection secures the filter into place and provides a tight seal preventing contaminate bypass. Contact IFP for more information on gas housing with 222/126 cartridge slots

As shown in the photos, the internal design feature of our single-element filter housings

All Filter Housings are designed with similar internal designs.



Series SSSH



Materials of Construction:

Head: 316L Stainless Steel
 Bowl: 316L Stainless Steel
 Clamp: 304 Stainless Steel
 Drain: 316L Stainless Steel
 O-Rings: Silicone, EPDM, Buna N, or Kalrez

Cartridge Dimensions (nominal)

Lengths (in): 5", 10", 20", 30"

Connections:

Inlet/ Outlet: 1.0" or 1.5" Sanitary Flange
 Drain: 1/2" Sanitary Flange

Finish:

Internal Surfaces: Electro-Polished < 16 RA
 External Surfaces: Electro-Polished < 25 RA

Operating Conditions:

Max Operating Pressure, 125 PSI (10 Bar)
 @212 °F (100 °C)

Cleaned & Packaged:

Cleaned per specification NAS 1638, Class 5 on a Class 100 flow bench and packaged.

Element Length	"A"	"B"	"C"	"D"
5.0"	11.1 in (281 mm)	8.9 in (227 mm)	0.5 in (14 mm)	10.7 in (273 mm)
10.0"	14.9 in (378 mm)	12.7 in (323 mm)	0.8 in (20 mm)	14.5 in (369 mm)
20.0"	26.6 in (676 mm)	24.5 in (622 mm)	1.4 in (34 mm)	26.3 in (668 mm)
30.0"	36.6 in (930 mm)	34.5 in (876 mm)	1.3 in (34 mm)	36.3 in (924mm)

**CONTACT INTERNATIONAL FILTER PRODUCTS
 FOR 126 O-RING STYLE CARTRIDGE CONNECTION
 LOCK MODEL DIMENSIONS**

NOMENCLATURE

PART NUMBER EXAMPLE: IFP- 01-0212-G-A-2-226

Style	Application	Element Length	Inlet/Outlet	O-Ring
XX-XXXX	-X	-X	-X	-XXX
01-0212 = IN-LINE	G=Gas	A = 5.0" 1 = 10.0" 2 = 20.0" 3 = 30.0"	2 = 1.5" TC	226=226

PRESSURE VS. FLOW RATE (PES MEMBRANE & POLYPROPYLENE)

