

4

3

2

1

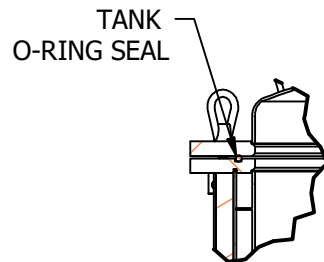
THIS DOCUMENT IS FOR REFERENCE ONLY AND IS PROPRIETARY INFORMATION BELONGING TO INTERNATIONAL FILTER PRODUCTS. UNAUTHORIZED COPIES OR USE FOR OTHER PURPOSES STRICTLY PROHIBITED.

REVISIONS

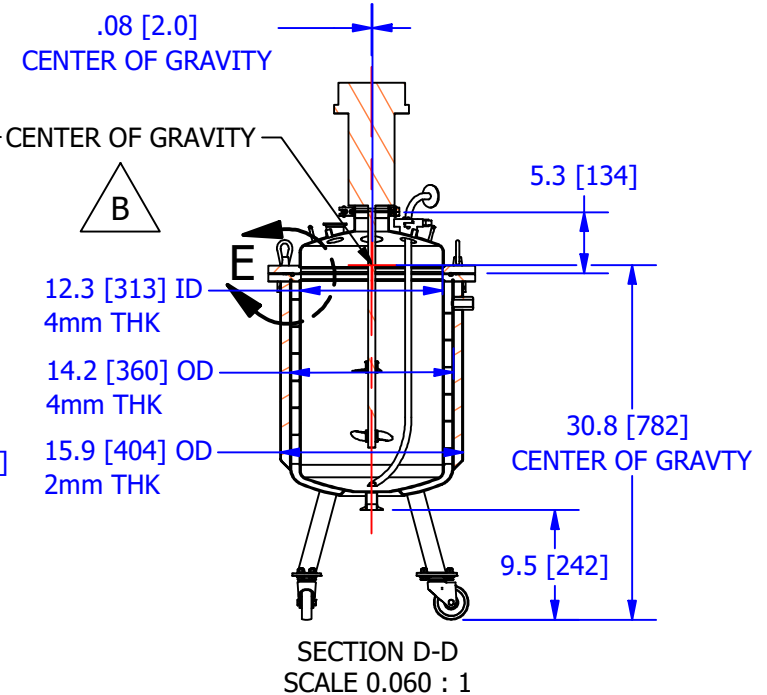
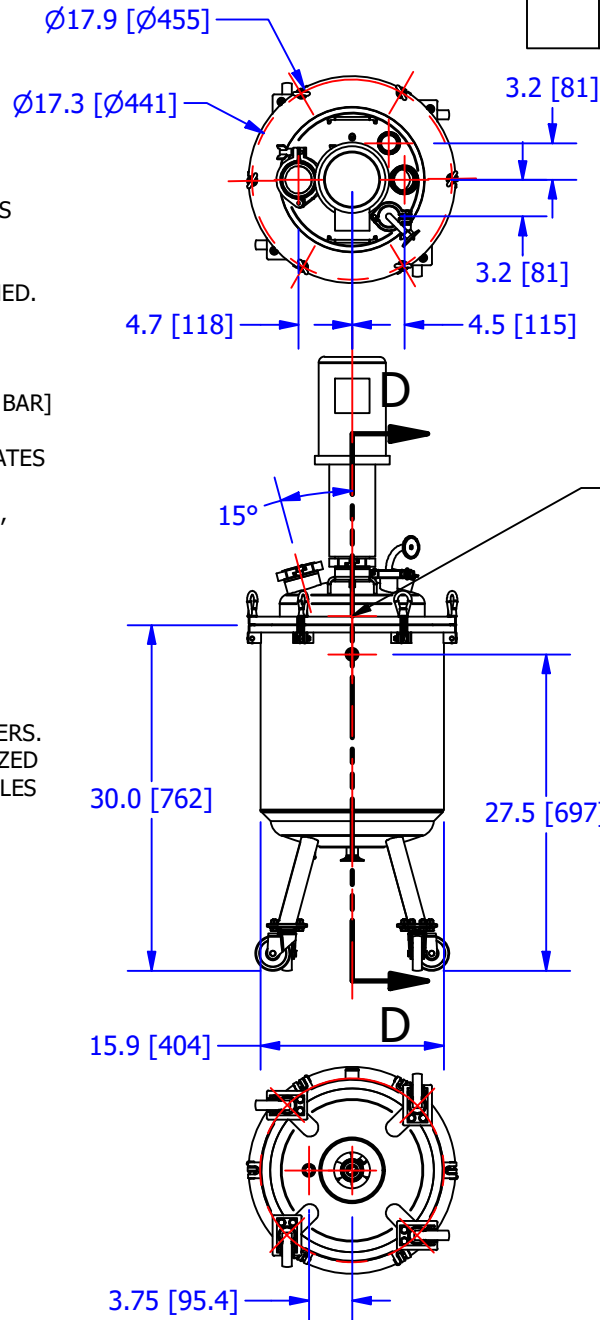
ZONE	REV	DESCRIPTION	DATE	APPROVED
	-	Production Release	7/19/2021	CD Morland
	B	ADDED CENTER OF GRAVITY	8/1/2022	YA Zanki
	B	PROVIDED SHAFT LENGTH, DIAMETER, AND IMPELLER DIAMETER	8/3/2022	YA Zanki

NOTES:

- 1.0 MATERIAL: 316L SS WETTED SURFACES
- 2.0 WORK VOLUME: 25 L [6.6 GALLONS]
- 3.0 THE DRAIN PORT: 1.0" TRI-CLAMP
- 4.0 THE PROCESS VESSEL MUST BE JACKETED ON THE OUTSIDE, JACKET MATERIAL: 304 SS
- 5.0 THE JACKETED TANK MUST BE INSULATED WITH ARMAFLEX HT AND ENCLOSED WITH LAYER 304 SS CLADDING.
- 6.0 INTERNAL WETTED SURFACES ARE 16 RA FINISH; EXTERNAL EXPOSED SURFACES ARE 20 RA FINISHED.
- 7.0 ALL SURFACES ARE TO BE ELECTRO-POLISHED AND PASSIVATED.
- 8.0 GASKET MATERIAL: EPDM; USE O-RING SIZE -456
- 9.0 THE WORKING DESIGN PRESSURE IS 100 PSI [6.8 BAR] @ 250°F [121°C]
- 10.0 JACKET HAS BAFFLES TO ENSURE FLUID CIRCULATES EVENLY AROUND THE PROCESS FLUID VESSEL.
- 11.0 THE JACKET FLUID IS REFRIGERATION COOLANT, INLET/OUTLET PORT: 3/4" NPT
- 12.0 THE JACKET DESIGN PRESSURE IS 100 PSI @ 250 °F [121 °C]
- 13.0 TOP COVER PORTS:
TWO 1.5" TRI-CLAMP
ONE 2" TRI CLAMP
TWO 3" TRI-CLAMP
- 14.0 FOUR LEGS ARE WELDED FOR SUPPORT W/CASTERS.
- 15.0 THE VESSEL IS DESIGNED TO BE STEAM STERILIZED AT 126 C FOR 60 MINUTES MAXIMUM OF 25 CYCLES BEFORE SEAL CHANGE.



DETAIL E
SCALE 0.12 : 1



DRAWN YA Zanki	7/19/2021
CHECKED OS AHMED	7/19/2021
APPROVED CD Morland	7/19/2021

UNLESS OTHERWISE SPECIFIED
DIMENSIONS ARE IN INCHES

DECIMALS FRACTIONS +/- 1/16
X +/- .030 ANGLES +/- 1/2
XX +/- .015 SURFACE ROUGHNESS 125
XXX +/- .005

CONCENTRICITIES .010 (FIM)
INTERNAL RADII .015~.030
BREAK CORNERS .005~.015

International Filter Products

7914 Ajay Dr. PHONE: 818-504-8115
Sun Valley, CA 91352 FAX: 818-841-2947
email: www.internationalfilterproducts.com

TITLE

TANK, ELLIPTICAL, JACKETED, 25L

SIZE	ISOF NO	DWG NO	REV
A		IFP-021-1778-IC-NP	B
SCALE	WEIGHT	SHEET	OF
NA	N/A	1	3

4

3

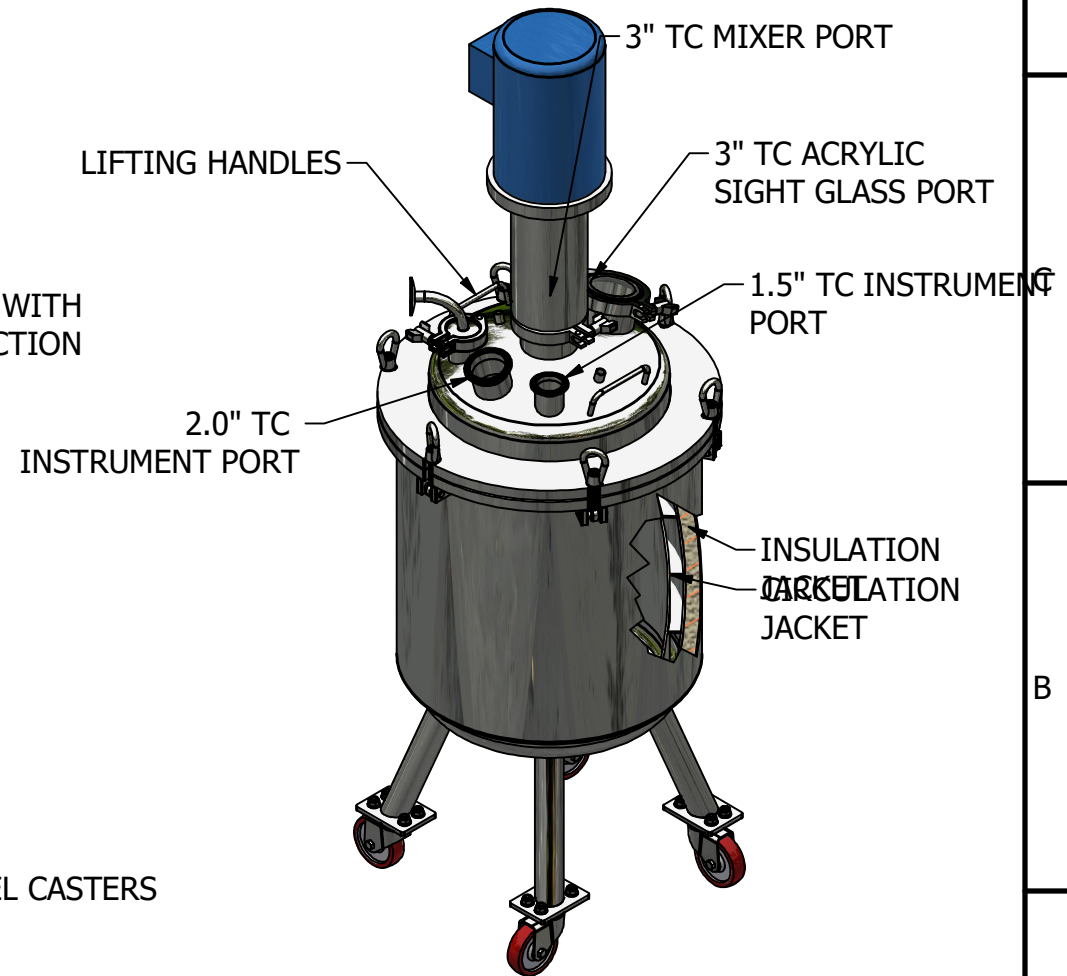
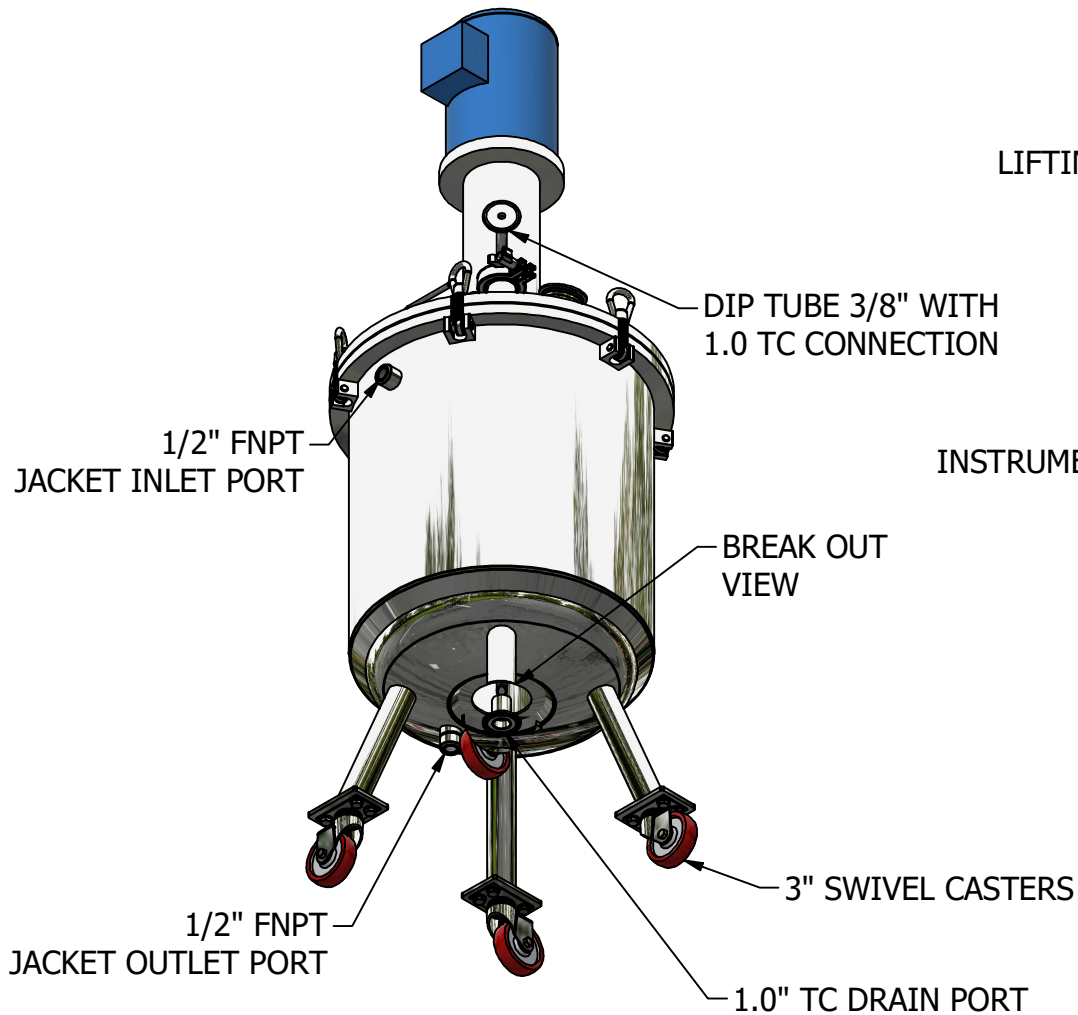
2

1

THIS DOCUMENT IS FOR REFERENCE ONLY AND IS PROPRIETARY INFORMATION BELONGING TO INTERNATIONAL FILTER PRODUCTS. UNAUTHORIZED COPIES OR USE FOR OTHER PURPOSES STRICTLY PROHIBITED.

REVISIONS

ZONE	REV	DESCRIPTION	DATE	APPROVED
	-	Production Release	7/19/2021	CD Morland
	B	PROVIDED SHAFT LENGTH, DIAMETER, AND IMPELLER DIAMETER	8/3/2022	YA Zanki
	B	ADDED CENTER OF GRAVITY	8/1/2022	YA Zanki



DRAWN YA Zanki	7/19/2021	International Filter Products			
CHECKED OS AHMED	7/19/2021	7914 Ajay Dr, Sun Valley, CA 91352	PHONE: 818-504-8115 FAX: 818-841-2947 email: www.internationalfilterproducts.com		
APPROVED CD Morland	7/19/2021	TITLE			
UNLESS OTHERWISE SPECIFIED DIMENSIONS ARE IN INCHES		TANK, ELLIPTICAL, JACKETED, 25L			
DECIMALS X +/- .030 XX +/- .015 XXX +/- .005	FRACTIONS +/- 1/16 ANGLES +/- 1/2 SURFACE ROUGHNESS 125	SIZE A	ISOF NO	DWG NO IFP-021-1778-IC-NP	REV B
CONCENTRICITIES .010 (FIM) INTERNAL RADII .015~.030 BREAK CORNERS .005~.015		SCALE NA	WEIGHT N/A	SHEET 2 OF 3	

4

3

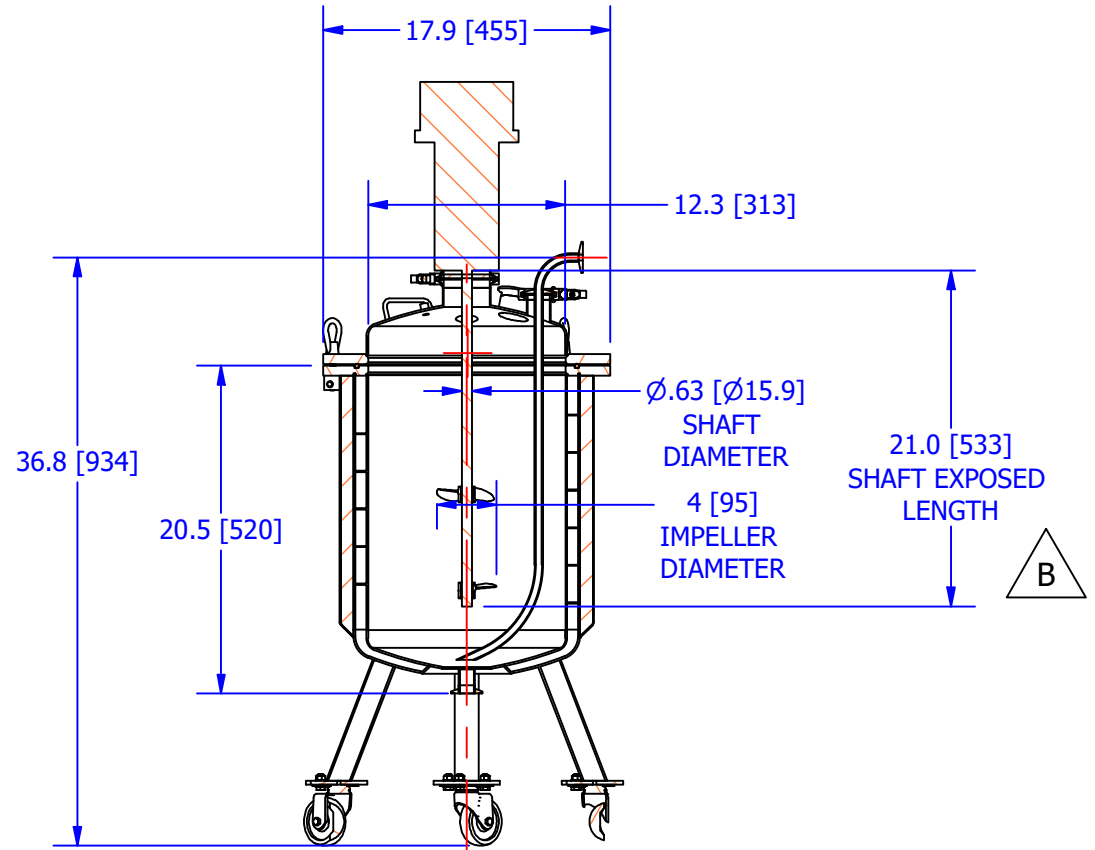
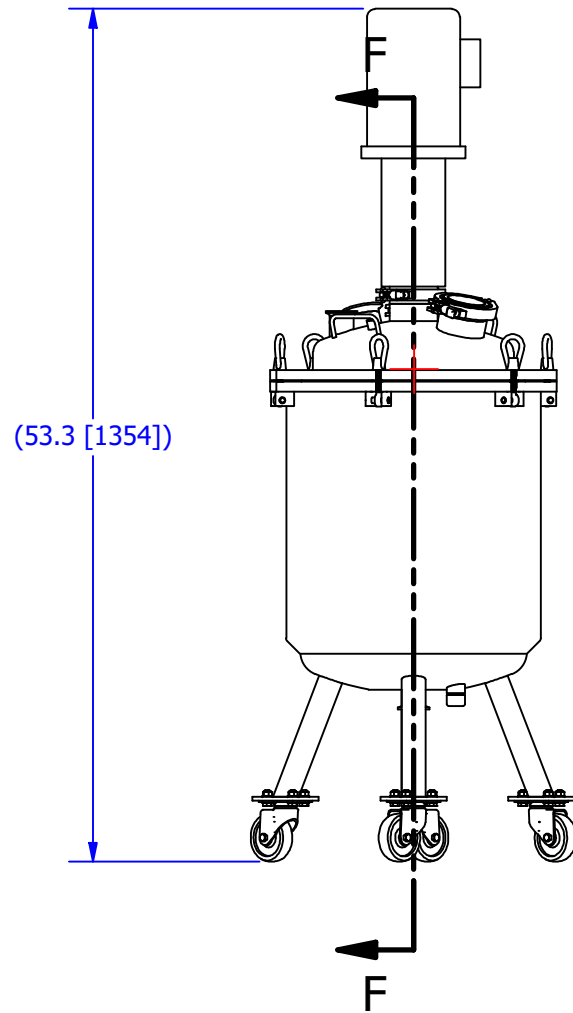
2

1

THIS DOCUMENT IS FOR REFERENCE ONLY AND IS PROPRIETARY INFORMATION BELONGING TO INTERNATIONAL FILTER PRODUCTS. UNAUTHORIZED COPIES OR USE FOR OTHER PURPOSES STRICTLY PROHIBITED.

REVISIONS

ZONE	REV	DESCRIPTION	DATE	APPROVED
	-	Production Release	7/19/2021	CD Morland
	B	PROVIDED SHAFT LENGTH, DIAMETER, AND IMPELLER DIAMETER	8/3/2022	YA Zanki
	B	ADDED CENTER OF GRAVITY	8/1/2022	YA Zanki



SECTION F-F
SCALE 1 / 12

DRAWN
YA Zanki
7/19/2021
CHECKED
OS AHMED
7/19/2021
APPROVED
CD Morland
7/19/2021

International Filter Products

7914 Ajay Dr.
Sun Valley, CA 91352

PHONE: 818-504-8115
FAX: 818-841-2947
email: www.internationalfilterproducts.com

UNLESS OTHERWISE SPECIFIED
DIMENSIONS ARE IN INCHES
DECIMALS FRACTIONS +/- 1/16
X +/- .030 ANGLES +/- 1/2
XX +/- .015 SURFACE ROUGHNESS 125
XXX +/- .005
CONCENTRICITIES .010 (FIM)
INTERNAL RADII .015~.030
BREAK CORNERS .005~.015

TITLE TANK, ELLIPTICAL, JACKETED, 25L			
SIZE A	ISOF NO	DWG NO IFP-021-1778-IC-NP	REV B
SCALE NA	WEIGHT N/A	SHEET 3 OF 3	

4

3

2

1