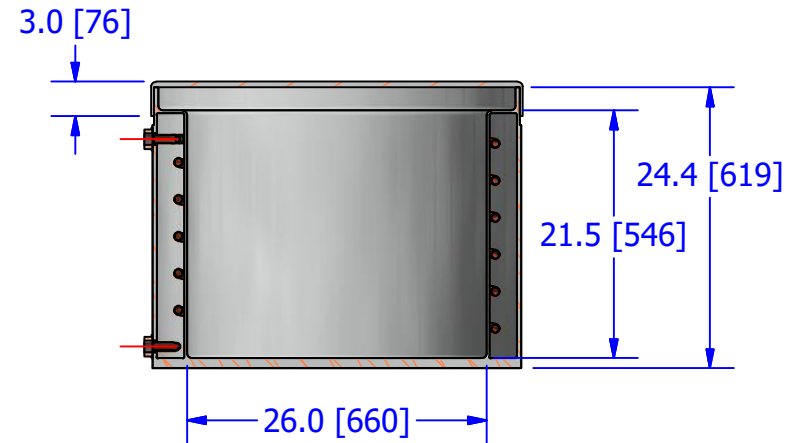
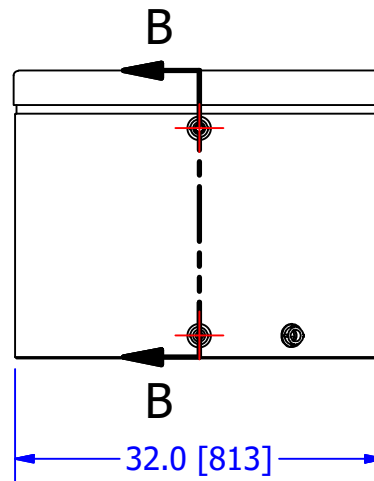
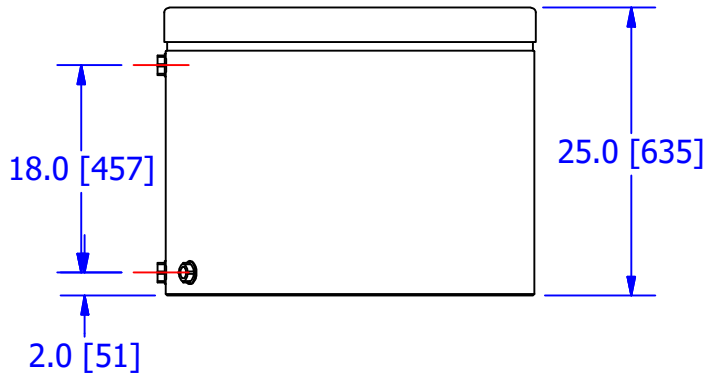
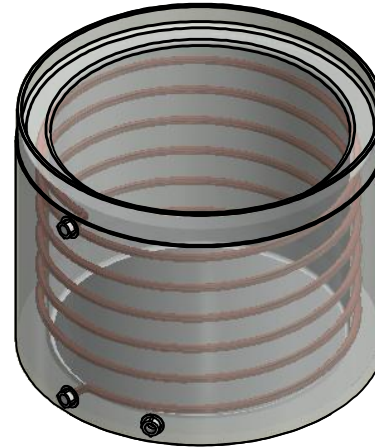
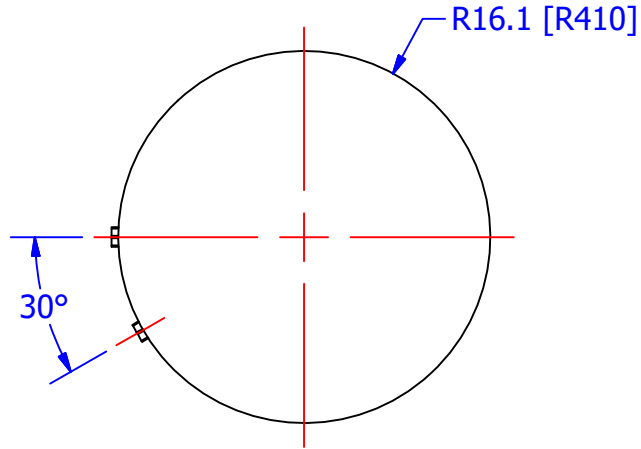


THIS DOCUMENT IS FOR REFERENCE ONLY AND IS PROPRIETARY INFORMATION BELONGING TO INTERNATIONAL FILTER PRODUCTS UNAUTHORIZED COPIES OR USE FOR OTHER PURPOSES STRICTLY PROHIBITED.

| REVISIONS |     |  |           |            |
|-----------|-----|--|-----------|------------|
| ZONE      | REV | DESCRIPTION  | DATE      | APPROVED   |
|           | -   | PRODUCTION RELEASE                                   | 10/5/2012 | CD Morland |
|           | A   | ADDED DIMENSIONS, CHANGED NOTES, AND ADDED 2nd PAGE. | 1/28/2020 | CD Morland |



SECTION B-B  
SCALE 0.06 : 1

NOTES:

- 1.0 TANK MATERIAL IS HDPE.
- 2.0 THE COPPER TUBING COIL IS 3/4" AND FORMS A HELICOIL AROUND THE INNER PIPE OF THE TANK. THE TUBING IS RATED @ 75 PSI [5.1 BAR] @ 104 °F [40 °C].
- 3.0 THE FILLER PORT PURPOSE IS TO PERMIT THE 50% GLYCOL WATER SOLUTION TO BE PUMPED INTO AND/OR DRAINED FROM COOLING JACKET.

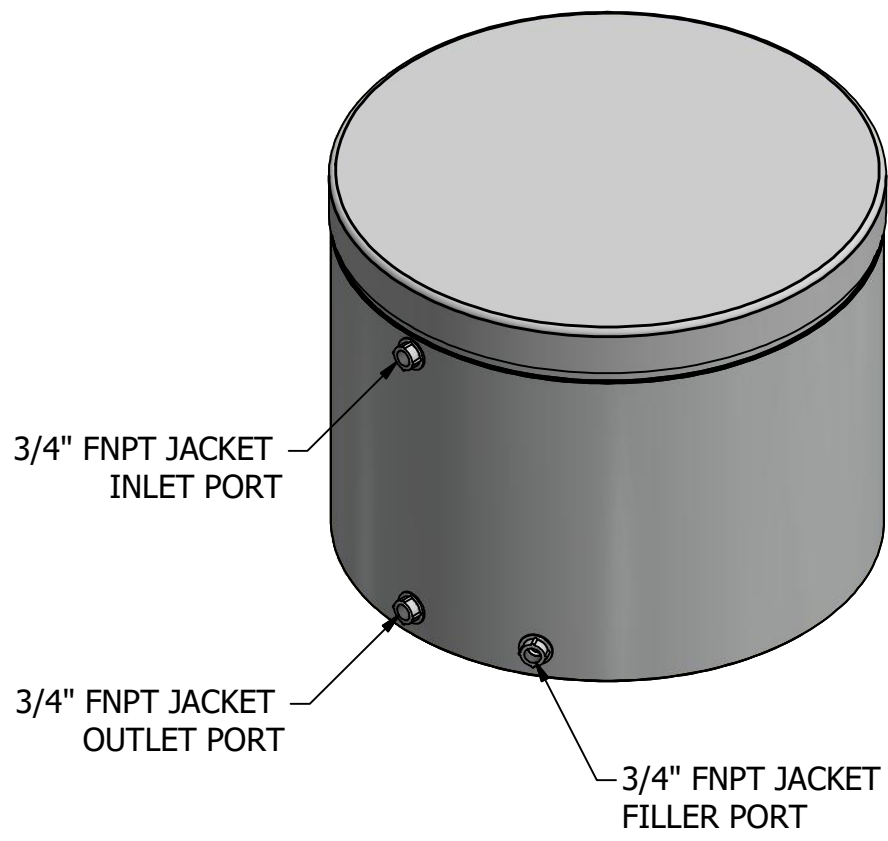
|   |                       |   |  |
|---|-----------------------|---|--|
| DRAWN<br>YA ZANKI                                   | 10/5/2012             | <b>International Filter Products</b>      |  |
| CHECKED<br>CD Morland                               | 10/5/2012             | 7914 Ajay Dr.<br>SUN VALLEY, CA 91352     | PHONE: 818-504-8115<br>FAX: 818-841-2947<br>email: sales@internationalfilterproducts.com |
| APPROVED<br>CD Morland                              | 10/5/2012             | TITLE<br><b>JACKETED TANK, 200L, HDPE</b> |  |
| UNLESS OTHERWISE SPECIFIED DIMENSIONS ARE IN INCHES |                       | SIZE<br><b>A</b>                          | ISOF NO  |
| DECIMALS X +/- .030                                 | FRACTIONS +/- 1/16    | DWG NO<br><b>FSF00001.03</b>              | REV<br><b>A</b>  |
| XX +/- .015   | ANGLES +/- 1/2        | SCALE<br>NA                               | WEIGHT<br>56 LBS [25.4 KG]   |
| XXX +/- .005  | SURFACE ROUGHNESS 125 | SHEET <b>1</b> OF <b>2</b>                |  |
| CONCENTRICITIES .010 (FIM)                          |                       |   |  |
| INTERNAL RADII .015~.030                            |                       |   |  |
| BREAK CORNERS .005~.015                             |                       |   |  |

THIS DOCUMENT IS FOR REFERENCE ONLY AND IS PROPRIETARY INFORMATION BELONGING TO INTERNATIONAL FILTER PRODUCTS UNAUTHORIZED COPIES OR USE FOR OTHER PURPOSES STRICTLY PROHIBITED.

| REVISIONS |     |  |           |            |
|-----------|-----|--|-----------|------------|
| ZONE      | REV | DESCRIPTION  | DATE      | APPROVED   |
|           | -   | PRODUCTION RELEASE                                   | 10/5/2012 | CD Morland |
|           | A   | ADDED DIMENSIONS, CHANGED NOTES, AND ADDED 2nd PAGE. | 1/28/2020 | CD Morland |

D  
C  
B  
A

D  
C  
B  
A



|                        |           |
|------------------------|-----------|
| DRAWN<br>YA ZANKI      | 10/5/2012 |
| CHECKED<br>CD Morland  | 10/5/2012 |
| APPROVED<br>CD Morland | 10/5/2012 |

**International Filter Products**  
 7914 Ajay Dr. PHONE: 818-504-8115  
 SUN VALLEY, CA 91352 FAX: 818-841-2947  
 email: sales@internationalfilterproducts.com

TITLE **JACKETED TANK, 200L, HDPE**

UNLESS OTHERWISE SPECIFIED  
 DIMENSIONS ARE IN INCHES

DECIMALS FRACTIONS +/- 1/16  
 X +/- .030 ANGLES +/- 1/2  
 XX +/- .015 SURFACE ROUGHNESS 125  
 XXX +/- .005

CONCENTRICITIES .010 (FIM)  
 INTERNAL RADII .015~.030  
 BREAK CORNERS .005~.015

|                  |                            |                              |                 |
|------------------|----------------------------|------------------------------|-----------------|
| SIZE<br><b>A</b> | ISOF NO                    | DWG NO<br><b>FSF00001.03</b> | REV<br><b>A</b> |
| SCALE<br>NA      | WEIGHT<br>56 LBS (25.4 KG) | SHEET<br><b>2</b>            | OF<br><b>2</b>  |

4 3 2 1