

Series SSSH: Sanitary Stainless-Steel Housings BIOLOGICAL

INTRODUCTION

Our Sanitary Single Element Housings are designed for high-purity applications and to meet your critical processing needs.

These housings are commonly used in the biological industries. Housings exceed standards for sterile filtration. The 316L Stainless Steel housings have been designed to meet ASME BPE. The highly polished corrosive-resistant material is ideal because of its superior strength and chemical compatibility.

The housings can accept one 2.75 diameter 226 O-ring filter configuration of various lengths. The 226 connection guarantees proper sealing preventing fluid bypass. Housings are designed for complete disassembly, allowing full access to all internal surfaces for easy cleaning. No special tools are required to open and close the housing due to it being sealed by a Tri-clamp

FEATURES

- *Aseptic Design*
- *Electro-Polished*
- *Cartridge Stop*
- *Maximize Product Recovery*
- *Easy to use low point drain valve*



APPLICATIONS

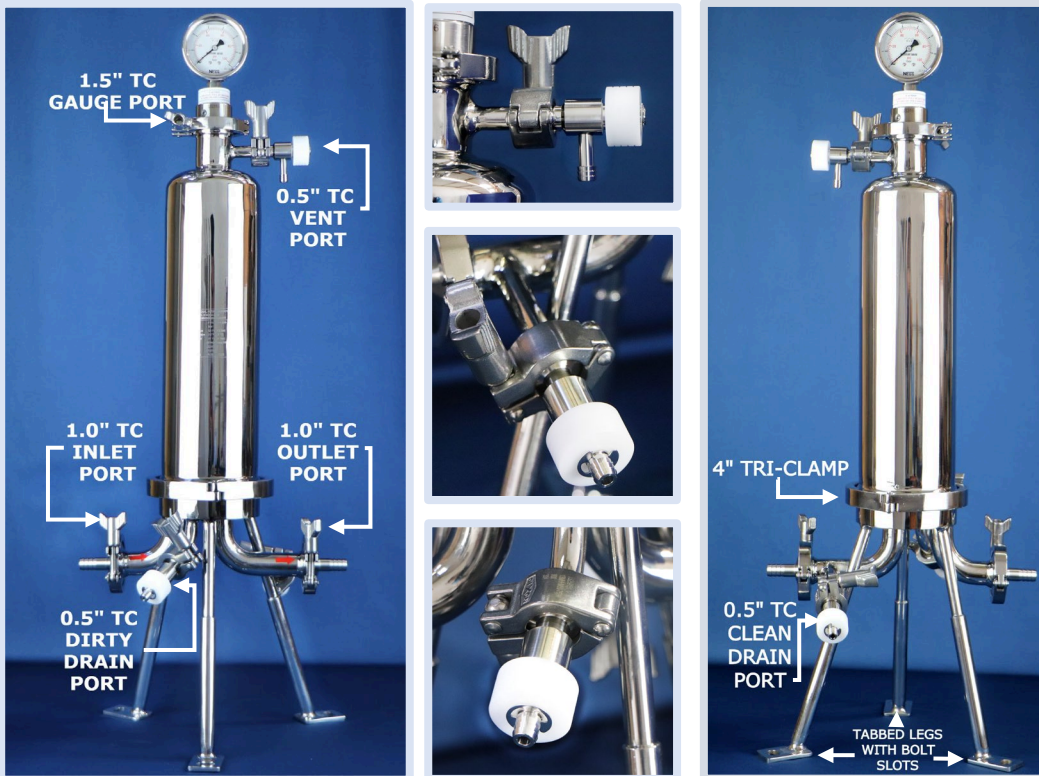
- *Biologics*
- *Electronics*
- *Fine Chemical*
- *Serums*
- *Pharmaceuticals*

BENEFITS:

- *No Dead Legs*
- *Fully Self draining*
- *Seamless of filter change-out*
- *Removable for Cleanability*
- *Maximize Product Recovery*
- *Crevice Free Electropolished surfaces with 8-10 RA internal surfaces*

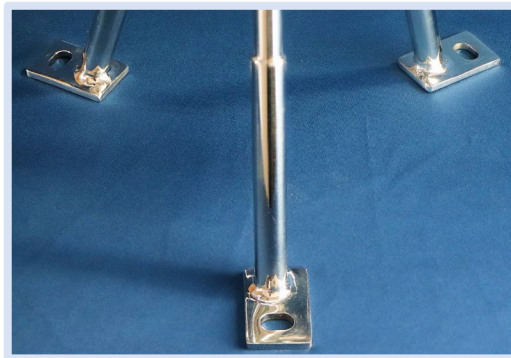
Series SSSH

Clamp and Seal Kits,
Gauges and Valves Sold
Separately



External Design Features - IFP's Sanitary Single Element Filter Housing is an aseptic design that is simple and convenient. The tri-clamp that fixes the dome to the base provides simplicity when filter changes or inspecting filter housing seals are required. The housing base has tabbed legs which provide stability and the option of fixing the housing onto a platform (see Single-Element Housing Duplex System Literature). The filter housing is equipped with one vent port and two drain ports, which allow for solution sampling before and after traveling through the filter.

As shown in the photos, the external design feature of our single-element filter housings. (Housing Part Number 01-0210-1-1-226-2)



All Filter Housings are designed with similar internal designs.



Internal Design Features - The objective of our Engineers was to design filter housing that is aseptic and convenient to use. Once the tri-clamp is removed the user can remove the lightweight dome, accessing the internal components. At the base, there is a 226 Cartridge slot with Lock tabs. Stops were placed to ensure tabs stay within the tab slots. This connection secures the filter into place and provides a tight seal preventing contaminate bypass.

As shown in the photos, the internal design feature of our single-element filter housings

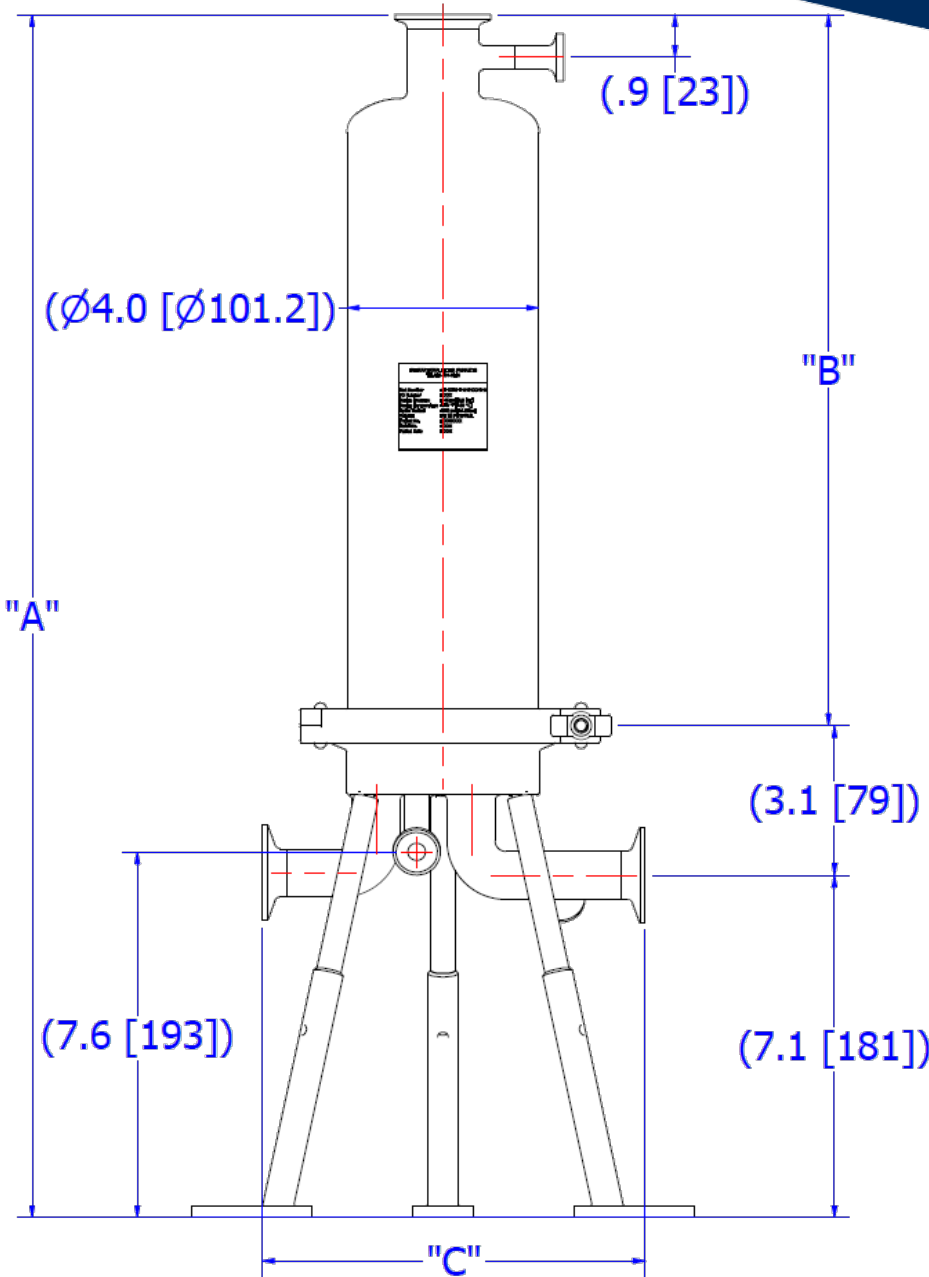


International Filter Products
Revolutionary systems for your industry



7914 Ajay Drive, Sun Valley, CA 91352
www.internationalfilterproducts.com
sales@internationalfilterproducts.com
Phone: (818) 504-8115

Series SSSH



Materials of Construction:

Head: 316L Stainless Steel
 Bowl: 316L Stainless Steel
 Clamp: 304 Stainless Steel
 Legs: 304 Stainless Steel
 Vent: 316L Stainless Steel
 O-Rings: Silicone, EPDM, Buna N, or Viton

Cartridge Dimensions (nominal)

Lengths (in): 5", 10", 20", 30"

Connections:

Inlet/ Outlet: 1.0" Sanitary Flange (5" & 10")
 1.5" Sanitary Flange (20" & 30")
 Gauge Port: 1.5" Sanitary Flange
 Vent / Drain: 1/2" Sanitary Flange

Finish:

Internal Surfaces: Electro-Polished < 10 RA
 External Surfaces: Electro-Polished < 16 RA

Operating Conditions:

Max Operating Pressure, 125 PSI (10 Bar)
 @212 °F (100 °C)

Cleaned & Packaged:

Cleaned per specification NAS 1638, Class 5
 on a Class 100 flow bench and packaged.

Element Length	"A"	"B"	"C"
5.0"	20.3 in (517 mm)	10.3 in (262 mm)	8.0 in (202 mm)
10.0"	25.0 in (636 mm)	14.8 in (375 mm)	8.0 in (202 mm)
20.0"	35.2 in (895 mm)	25.2 in (640 mm)	9.0 in (225 mm)
30.0"	45.0 in (1138 mm)	34.8 in (883 mm)	9.0 in (225 mm)

NOMENCLATURE

PART NUMBER EXAMPLE: 01-0210-1-1-226-2

Style	Element Length	Inlet/Outlet	O-Ring	Vent/Drain
XX-XXXX	-X	-X	-XXX	-X
01-0210 = T-TYPE	A = 5.0"	1 = 1.0" TC (5" & 10")	226=226	2 = 1/2" TC
	1 = 10.0"			
	2 = 20.0"	2 = 1.5" TC (20" & 30")		
	3 = 30.0"			

PRESSURE VS. FLOW RATE (PES MEMBRANE & POLYPROPYLENE)

