

## DESIGN

Only use the **DESIGN** layer for your design (see the layers panel). This layer is marked green.

### PLEASE DON'T MODIFY THE OTHER LAYERS!

Once you're done, **OUTLINE** all text and save as a .ai file

The **MAGENTA** line is the **DIELINE**. This is the printed area. Ensure your design is **WITHIN** this area.

The **CYAN** line is the **BLEED** line. Make sure **all** your photos/solid colours **COVER** this area. This is for small variances when printing. You can extend the design past the bleed line if you need to. We will crop it out when we print.

You can preview the design without the dieline and bleed by showing the **PREVIEW** layer (Click the eyeball on the second

## PRINT

Print is CMYK digital. You can add vectored logos, artwork and even photos! The quality of the print is very high and super durable!

## OPTIONS

We can print **VARIABLE DATA** such as sequential numbers, barcodes, QR codes and even unique names etc from an excel spreadsheet. If you're interested in this option email us for more information.

The Merch Factory website is included in the standard price one side **only**. You can delete one and change the colour if needed. You can remove the merchfactory website for an additional 10%

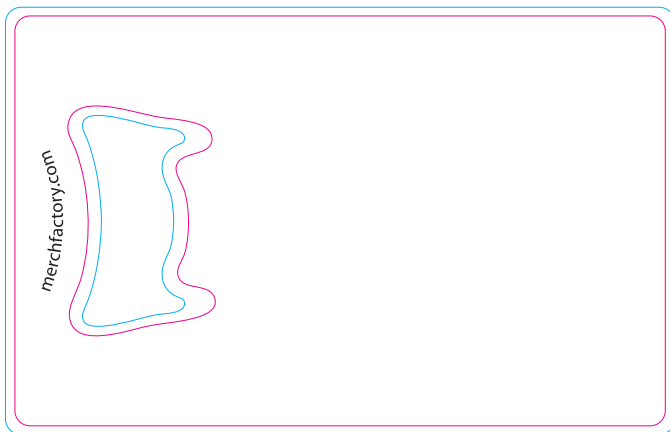
### MOCKUP APPROVAL CHECKLIST

- Check Spelling
- Check Phone Numbers etc
- Check Colours
- Check Print Positions/Sizes

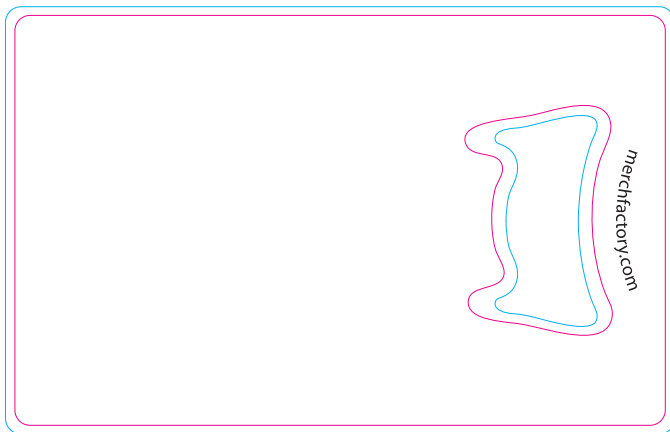
### CONFIRM THE MOCKUP VIA EMAIL

### PRODUCT DETAILS

- WIDTH - 54mm
- HEIGHT - 86mm
- THICKNESS - 1.2mm
- WEIGHT - 32g
- MATERIAL - STAINLESS STEEL



FRONT



BACK

