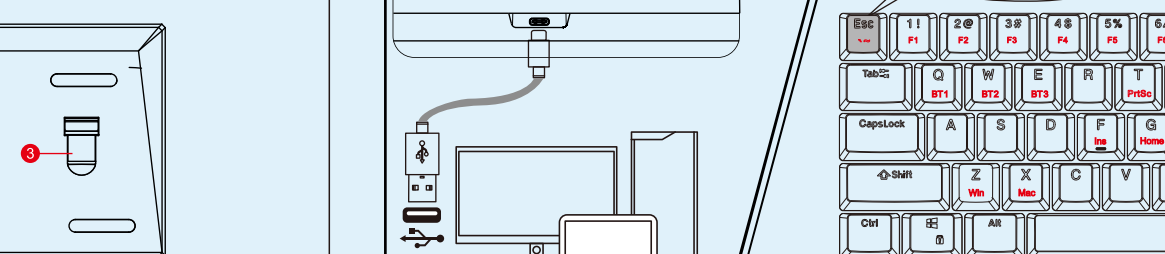
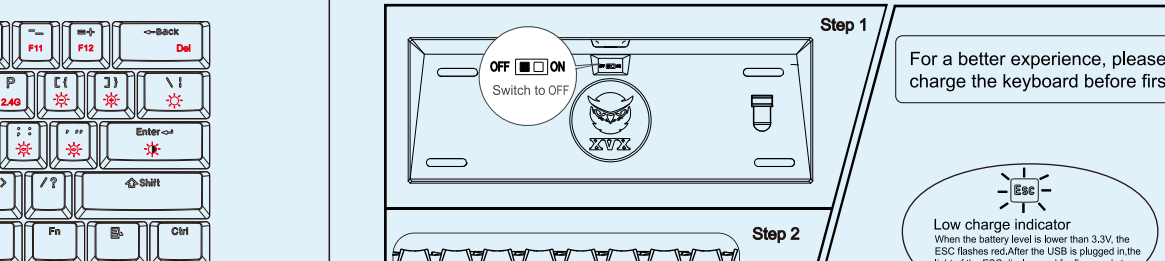


Theme Series

M61 PRO

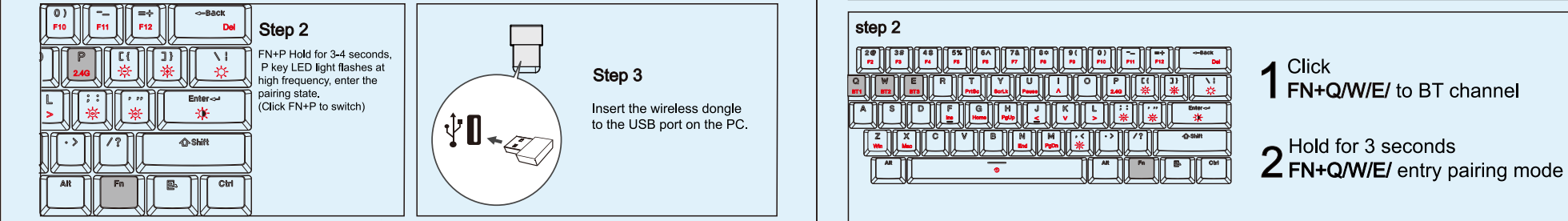
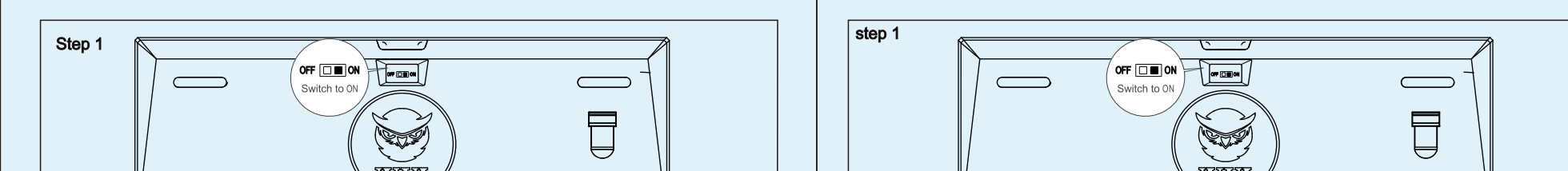
User Manual

INTRODUCTION

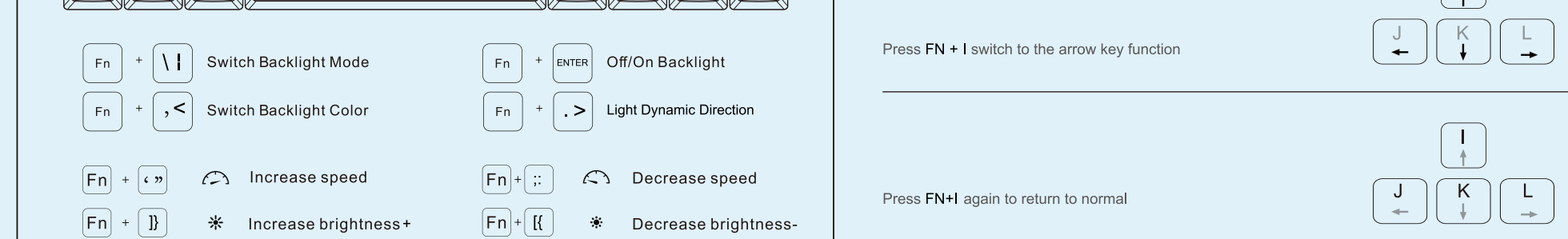
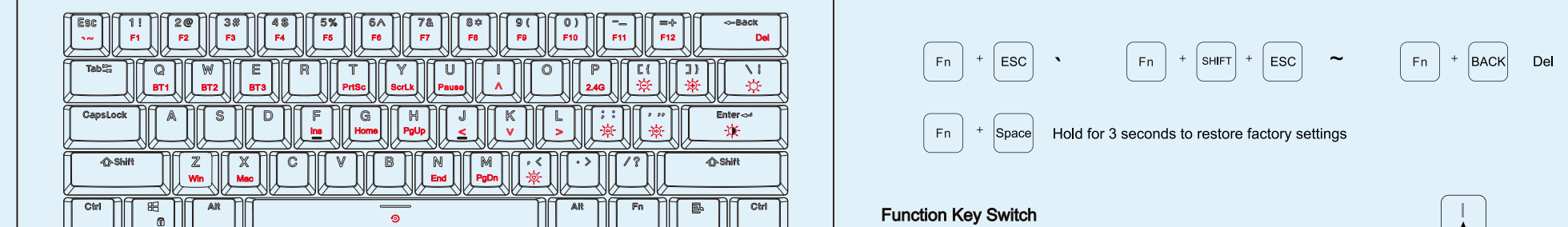


1. USB Type-C Port 2. Power Switch 3. 2.4G Receiver Placement Hole

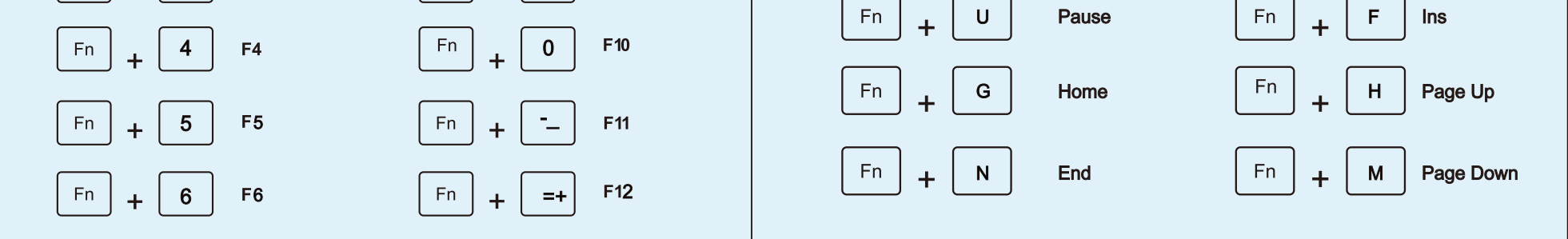
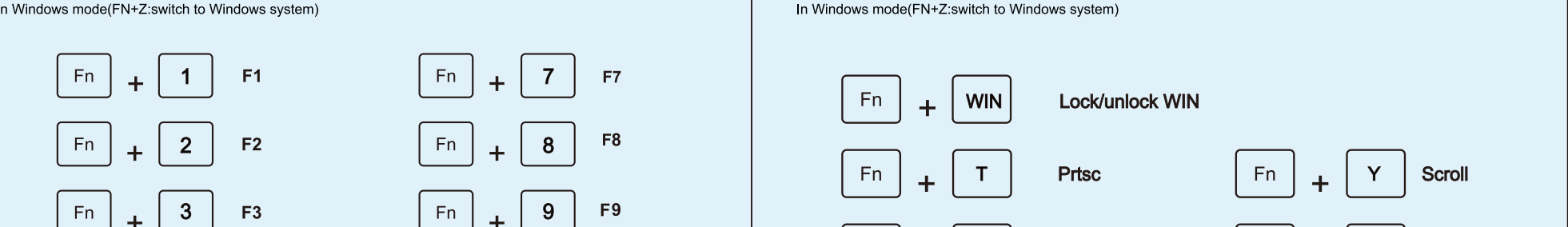
WIRED MODE&CHARGING



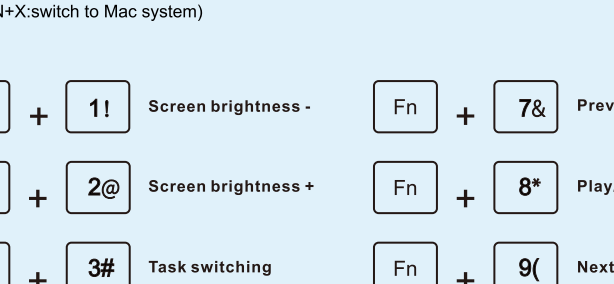
HOW TO USE 2.4GHZ



HOW TO USE BT CONNECTION



BACKLIGHT CONTROL



- Fn + [|] Switch Backlight Mode
- Fn + [, <] Switch Backlight Color
- Fn + [< >] Increase speed
- Fn + [] * Increase brightness+
- Fn + [ENTER] Off/On Backlight
- Fn + [. >] Light Dynamic Direction
- Fn + [: ;] Decrease speed
- Fn + [[] * Decrease brightness-

SPECIAL FUNCTION KEYS

- Fn + ESC ~
- Fn + SHIFT + ESC ~
- Fn + BACK Del
- Fn + Space Hold for 3 seconds to restore factory settings

Function Key Switch

- Press FN + I switch to the arrow key function
- Press FN+I again to return to normal

MULTIMEDIA KEY FOR WINDOWS

In Windows mode(FN+Z:switch to Windows system)

- Fn + 1 F1
- Fn + 2 F2
- Fn + 3 F3
- Fn + 4 F4
- Fn + 5 F5
- Fn + 6 F6
- Fn + 7 F7
- Fn + 8 F8
- Fn + 9 F9
- Fn + 0 F10
- Fn + - F11
- Fn + =+ F12
- Fn + WIN Lock/unlock WIN
- Fn + T Prtsc
- Fn + U Pause
- Fn + G Home
- Fn + N End
- Fn + Y Scroll
- Fn + F Ins
- Fn + H Page Up
- Fn + M Page Down

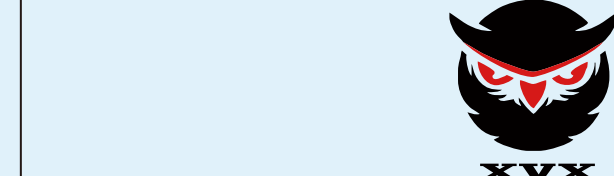
MULTIMEDIA KEY FOR MAC

In Mac mode(FN+X:switch to Mac system)

- Fn + 1! Screen brightness -
- Fn + 2@ Screen brightness +
- Fn + 3# Task switching
- Fn + 4\$ Fast access
- Fn + 5% Keyboard brightness -
- Fn + 6^ Keyboard brightness +
- Fn + 7& Previous playlist
- Fn + 8* Play/Pause
- Fn + 9(Next playlist
- Fn + 0 Mute
- Fn + =+ Volume +
- Fn + - Volume -

PRO SOFTWARE DOWNLOAD LINK

<https://www.xvxchannel.com>
 * Please note the macro software is only available for Windows PC at this time.
 * The software can be used in wire mode and 2.4G wireless mode.



<https://www.xvxchannel.com>
 Instagram.com/xvx_keyboard

