



**26V**  
**LITHIUM-ION**  
**BATTERY**

---

QUICK START GUIDE

---

# Overview

## Remaining Power Indicator LEDs

- 81-100% Power
- 61-80% Power
- 41-60% Power
- 21-40% Power
- 1-20% Power

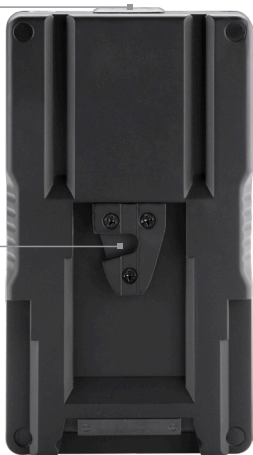
## Remaining Power Check Button

## Heat-Resistant Housing



## D-Tap Battery Charging Port (No Power Output)

## V-Mount



## Warning

- Use only in 26V applications
- Charge with only the recommended Westcott 26V Battery Charger #7585 or Westcott 26V Dual Battery Charger #7584
- Do not immerse in water
- Keep dry and away from excessively dry or humid environments
- Never expose to temperatures above 60°C (140°F)
- Do not attempt to open, disassemble, or modify
- Do not short battery terminals
- Air travel eligibility should be confirmed with TSA and ticketed airlines. Westcott is not responsible for any batteries confiscated by governing bodies.
- Store away from metal objects that may potentially come in contact with battery terminals
- Do not pierce, strike, step on, or subject to strong impacts or shocks
- Never leave the battery unattended while charging
- Refer to local regulations prior to disposing

## Operation

### Attaching to a 26V Battery Charger

1. Align the V-Mount on the back of the battery to the V-Mount docking station, ensuring that the point of the “V” shape on each are pointed in the same direction.
2. Gently press the battery against the docking station and slide the battery into place until it clicks.
3. If the battery does not click into place, remove the battery from the docking station and repeat mounting steps.

### Removing from a 26V Battery Charger

To remove battery, hold the release button located alongside the V-Mount docking station while sliding the battery out of the docking station. Then, release the button and store battery when not in use.

### D-Tap Connection

- To avoid damage to 14.4V - 14.8V products, the D-tap connection located on the top of the 26V Battery does NOT output power
- D-Tap connection is for charging the 26V Battery

## Charging

It is recommended to charge this 26V Battery with a Westcott 26V Battery Charger #7585 or Westcott 26V Dual Battery Charger #7584.

Charging current should not exceed 5A.

Estimated charge time from fully discharged is approximately 75 - 90 minutes. Charge time may vary depending on chargers and conditions.

This battery has a life of 300+ charge cycles. One charge cycle is equivalent to one full charge, full discharge, and full recharge.

## Discharging

The battery usually holds 30% of its capacity when packaged and can be used at once. It can reach full capacity after it has been fully charged and discharged at least two times.

The battery can be used in ambient temperature of  $-30^{\circ}\text{C}$  ( $-22^{\circ}\text{F}$ ) to  $50^{\circ}\text{C}$  ( $122^{\circ}\text{F}$ ). It must be noted however that, while Li-ion performs better in lower temperature than other battery chemistries, the operating time will still be shorter in lower temperature conditions. It will also vary with the power consumption of the equipment connected and the condition of the battery. If temperature of the battery itself is below  $-30^{\circ}\text{C}$  ( $-22^{\circ}\text{F}$ ), discharge may stop.

## Storage

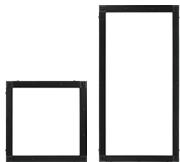
Storage temperature range is  $-20^{\circ}\text{C}$  ( $-4^{\circ}\text{F}$ ) to  $60^{\circ}\text{C}$  ( $140^{\circ}\text{F}$ ), for prolonging battery life,  $0^{\circ}\text{C}$  ( $32^{\circ}\text{F}$ ) to  $20^{\circ}\text{C}$  ( $68^{\circ}\text{F}$ ) is recommended.

To store the battery for a short period the battery should be stored in discharged condition.

To store the battery for a long period, the battery should be charged up to 50% of capacity and left in this condition. This should be repeated every 3 months.

After storage, while Li-ion is better than other battery chemistries, some self-discharge will occur, before reuse it is advisable to fully recharge the battery.

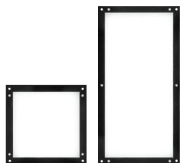
# Flex Cine Mounts & Modifiers



Scrim Jim® Cine Frames



Yokes



Hard Diffusion Panels



Barndoors



Drum Softbox



China Cubes



Portable Softboxes



Egg Crate Grids

Learn more at [FJWESTCOTT.COM/FLEX](http://FJWESTCOTT.COM/FLEX)

# Warranty

Westcott's warranty obligations for this product are limited to the following terms.

The F.J. Westcott Co. ("Westcott") warrants this Westcott branded product against defects in materials and workmanship under normal use for a period of ONE (1) YEAR from the date of retail purchase from Westcott or an authorized retailer by the original end-user purchaser ("Warranty Period"). If a defect arises and a valid claim is received within the Warranty Period, at its option and to the extent permitted by law, Westcott will either (1) repair the defect at no charge, using new or refurbished replacement parts, or (2) exchange the product with a product that is new or which has been manufactured from new or serviceable used parts and is at least functionally equivalent to the original product. This Limited Warranty applies only to products manufactured by or for Westcott that can be identified by the Westcott trademark, trade name, or logo affixed to them.

This warranty does not apply to: (a) damage caused by accident, abuse, misuse, flood, fire, earthquake, mold, or other external causes; (b) damage caused by operating the product outside the permitted or intended uses described by Westcott; (c) a product or part that has been modified to alter functionality or capability without the written permission of Westcott; or (d) cosmetic damage, including but not limited to scratches, dents and broken plastic.

**Disclaimer:** By purchasing, borrowing and/or using this product for any event, both public or private, you, the customer, accepts all responsibility and releases Westcott, and its associates, of any and all liability in the event of manufacturer's defect, malfunction or misuse of the product which may lead to further injuries or complications unforeseen by the user. Westcott is not responsible for any potential or incurred damage caused by failure to properly mount, hang, or store the product, which includes, but is not limited to damage to cameras, electronics, electrical equipment, buildings, building materials, personal injury, death, or disability, fire damage, or any and all other damage not mentioned previously.

Please contact Westcott's Repair Department for a Return Authorization Number "RMA" prior to requesting warranty service. This RMA must be clearly written on the outside of the box to the left of the shipping label. Items sent in without pre-authorization or that do not fall under the limited warranty will be returned at the expense of the sender.

**Repair Department:** 800-886-1689 / 419-243-7311 (International)

**Email:** [service@fjwestcott.com](mailto:service@fjwestcott.com)

**Shipping:** F.J. Westcott Co, 1425-B Holland Rd. Maumee, OH 43537

[Register your new gear online at FJWESTCOTT.COM/REGISTER](https://www.fjwestcott.com/register)

**Visit FJWESTCOTT.COM for videos, pro tips, inspiration, and more!**

Westcott products are made to the company's traditionally high standards of quality and comply with all applicable government safety regulations and requirements. In an effort to provide the best quality products possible, we periodically make product modifications. Actual products may not be identical to items pictured. Made in China. ©F.J. Westcott Co. All rights reserved. HWO918