



# Juke Box HiFi/Stereo Set

Setup Guide

Please read before unpacking!

# Setup Guide for Juke Box E HiFi Set Juke Box S2 Stereo Set



# Get started:

- Make sure you have enough space to unpack your turntable.
- Make sure to unpack it in a clean environment.
- Do not throw packaging away.

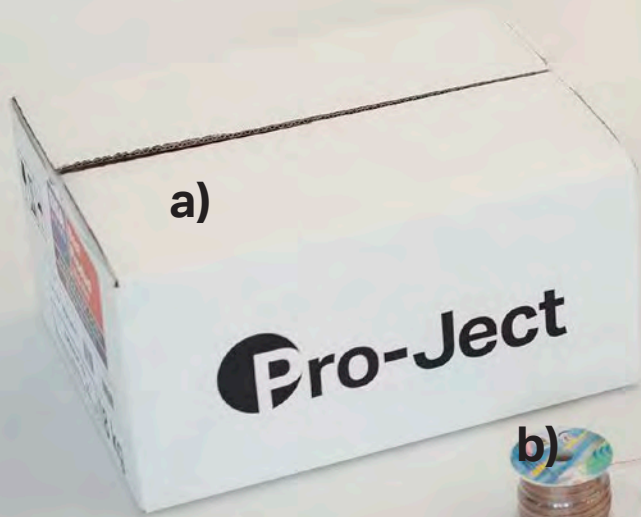
**Important for warranty!**

**More information about the product in the manual.**

**1**

**Unpack all items from outer carton.**

- a) Juke Box turntable
- b) Speaker cable spool
- c) Banana plugs
- d) Damp it rubber damping feet
- e) Speaker Box

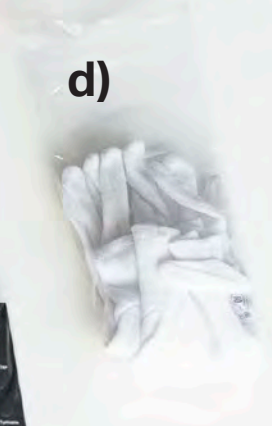
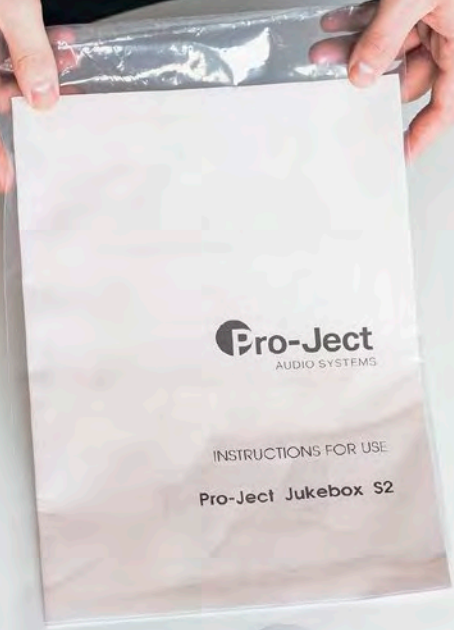


2

## Open turntable carton and unpack all items from accessory bag.

- a) Stylus pressure gauge
- b) Batteries for remote control
- c) Drive Belt
- d) Fabric gloves
- e) Adapter for 7" singles / allen key for counterweight setting
- f) Weight for ultra light cartridges
- g) Bluetooth antenna
- h) Power cable (power supply on step 6 )
- i) Remote control





**3**

**Remove dust cover carton from the box.**





**4**

**Carefully remove the turntable protection insert.**



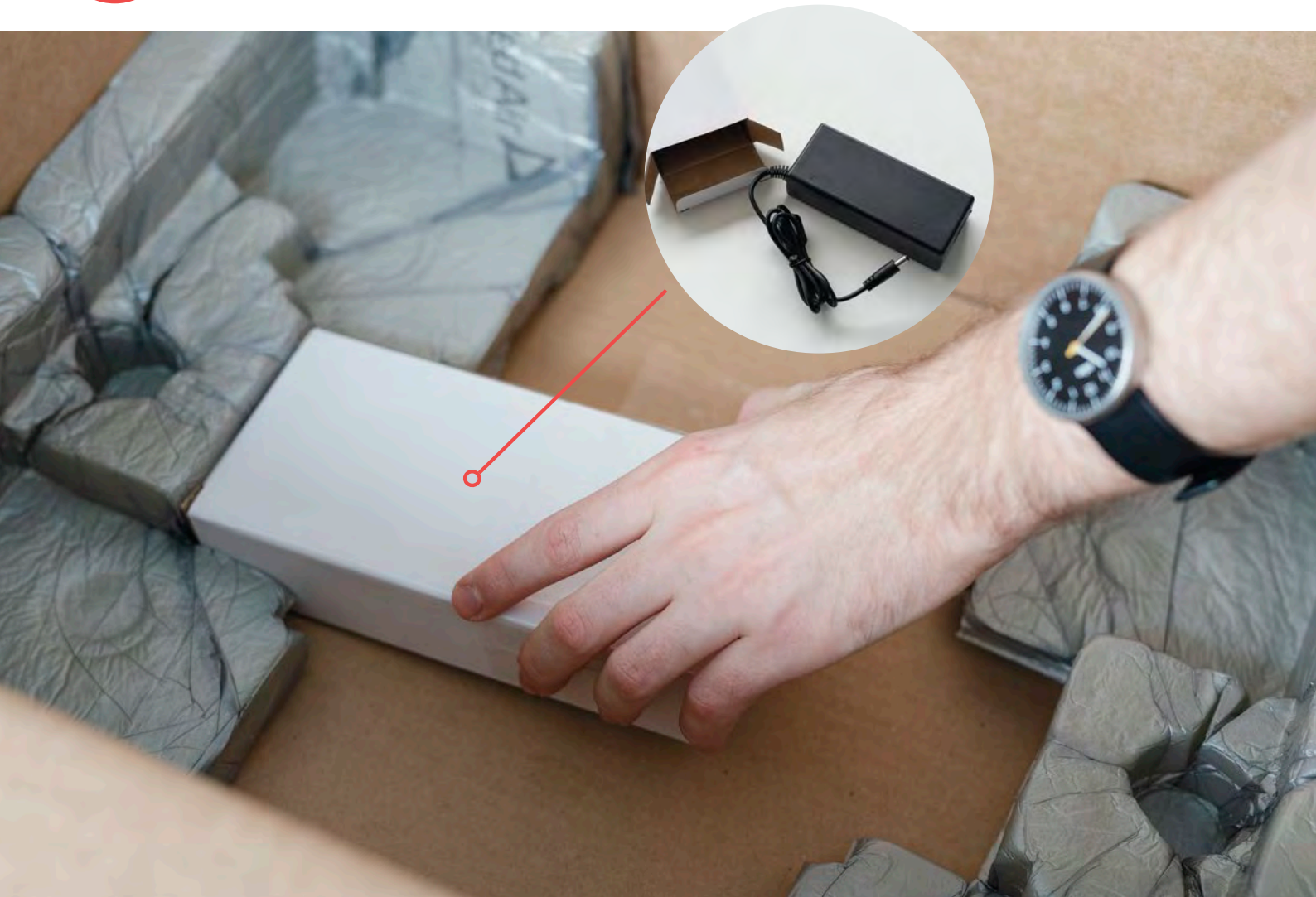
**5**

**Lift the wrapped turntable out of the box.**



6

Unpack the power supply.





7

Carefully remove the protection covering.



**Tonearm is fragile!**

8

Remove the platter protection.





9

Put the drive belt on the pulley and platter.



**Start with the pulley!**

Small pulley- 33 RPM

Big pulley - 45 RPM

**Important:** Make sure to have clean hands when touching the belt. Dirt on the belt can cause it to slip.

10

Install the Bluetooth antenna.



11

Unpack dust cover and put it on the turntable.





**12**

**Carefully lift the speakers out of the packaging.**



# 13

## How to correctly position your Juke Box Set.

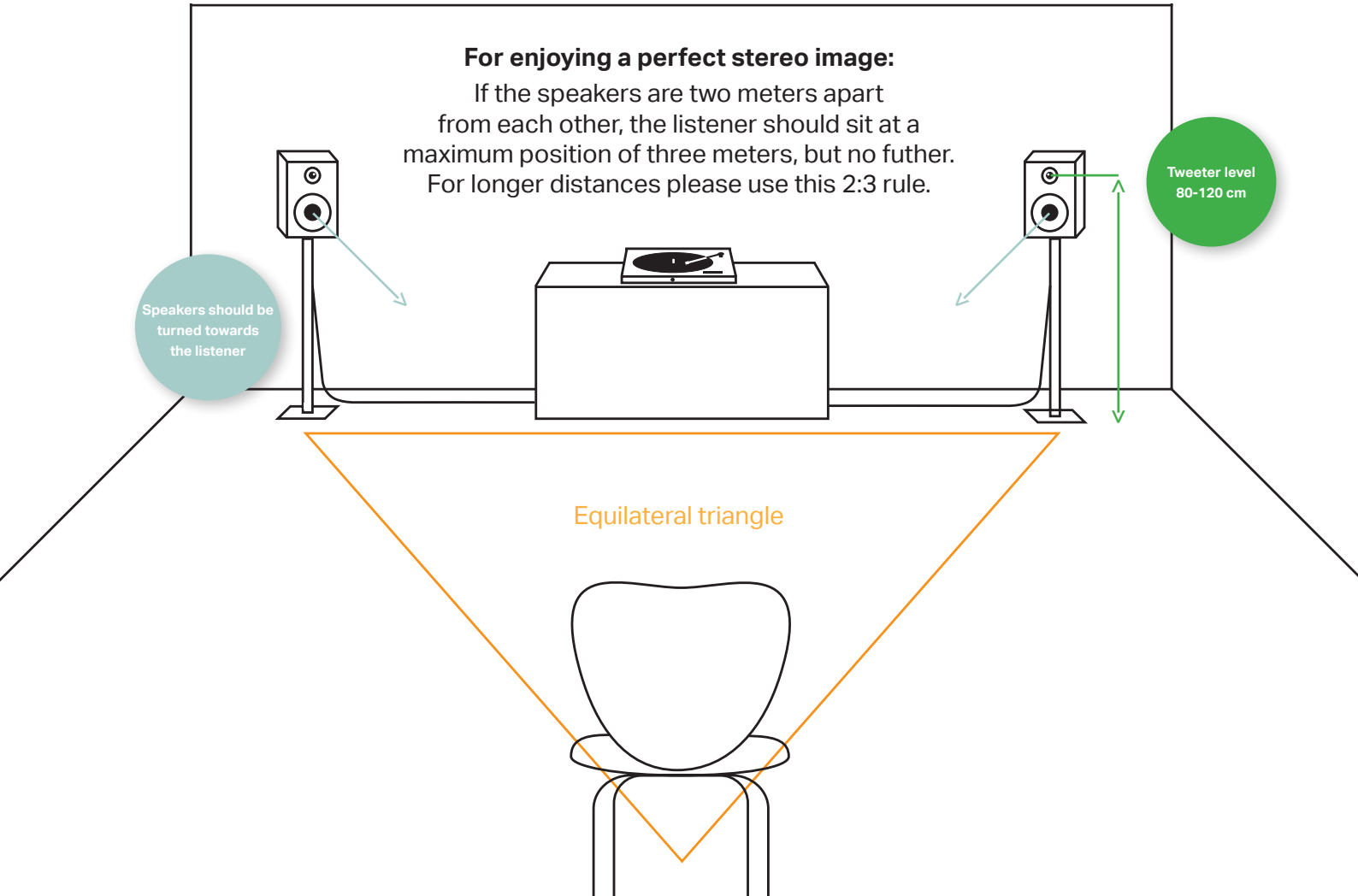
**For enjoying a perfect stereo image:**

If the speakers are two meters apart from each other, the listener should sit at a maximum position of three meters, but no further. For longer distances please use this 2:3 rule.

Speakers should be turned towards the listener

Tweeter level  
80-120 cm

Equilateral triangle





**14**

**Please use the supplied Damp-it rubber feet for optimal sound and less surface vibration.**



# 15

## How to correctly assemble the supplied cable.

### Supplied contents



Speaker cable



4 Banana plugs

### Needed contents



Splitting pliers



Slotted  
screwdriver



Box cutter



Side cutter

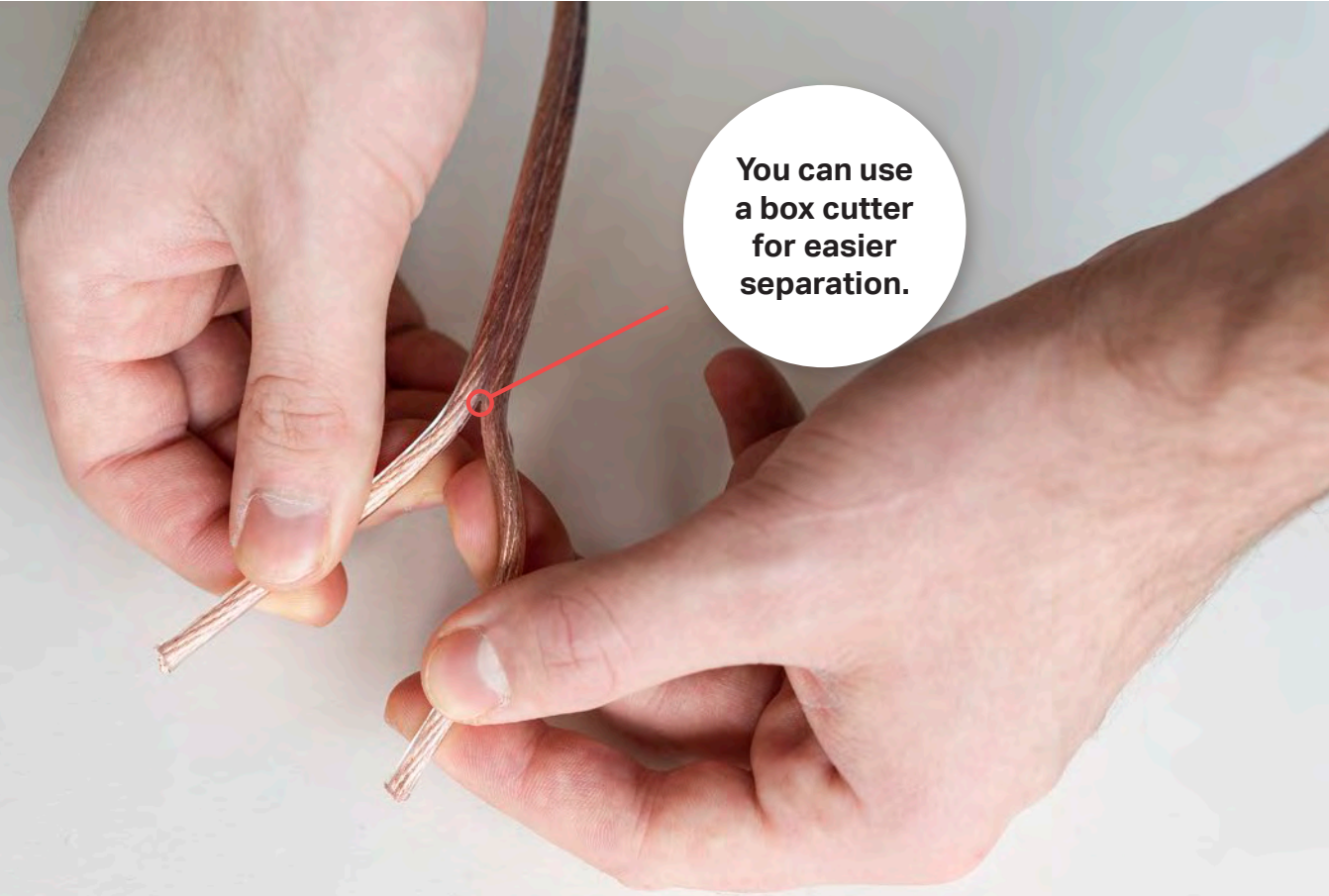
**16**

**Cut the 6m cable to your desired length.**



**17**

**Separate the channels from each other.**



**You can use  
a box cutter  
for easier  
separation.**



18

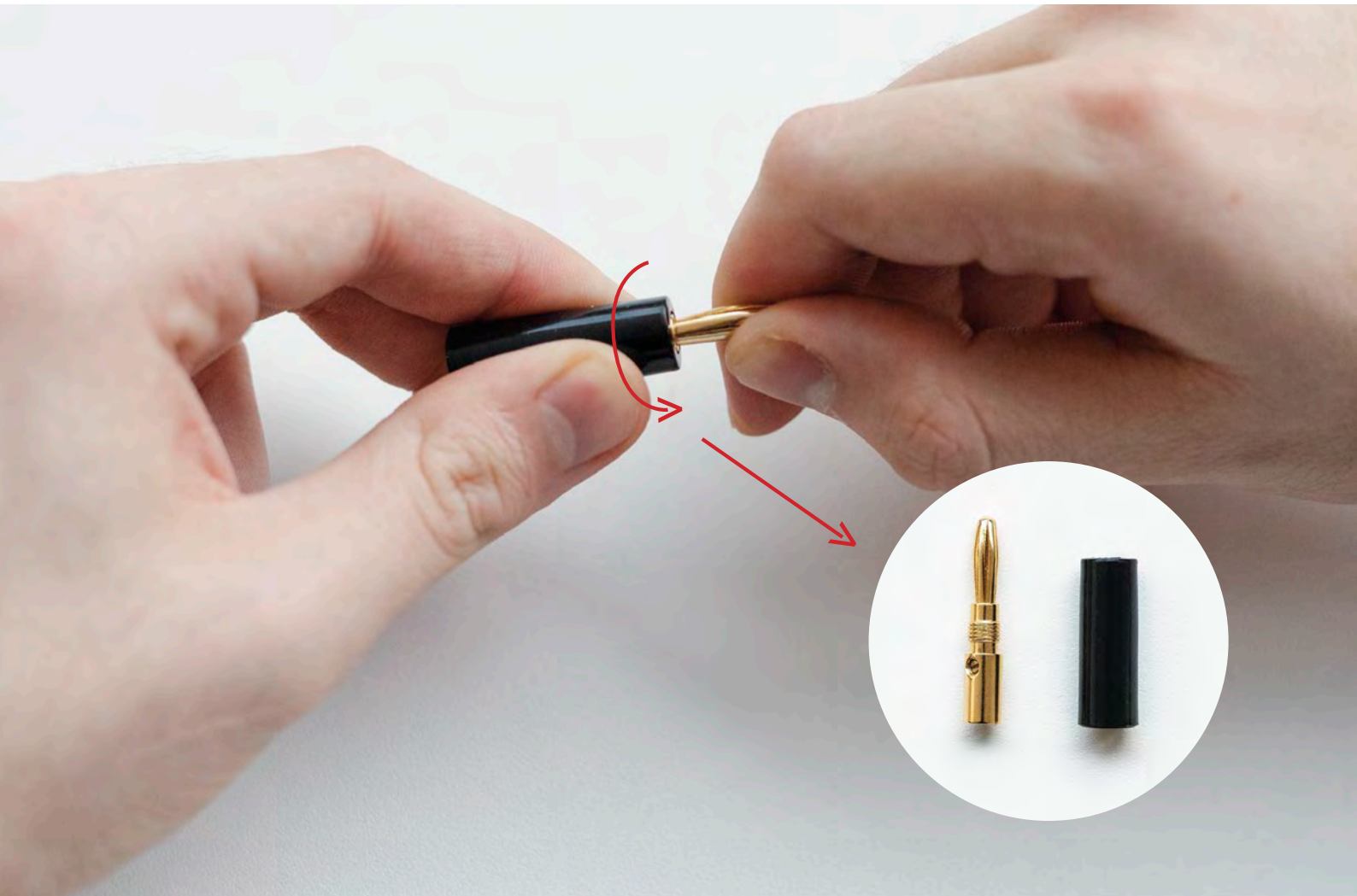
Strip the insulation from each cable end.





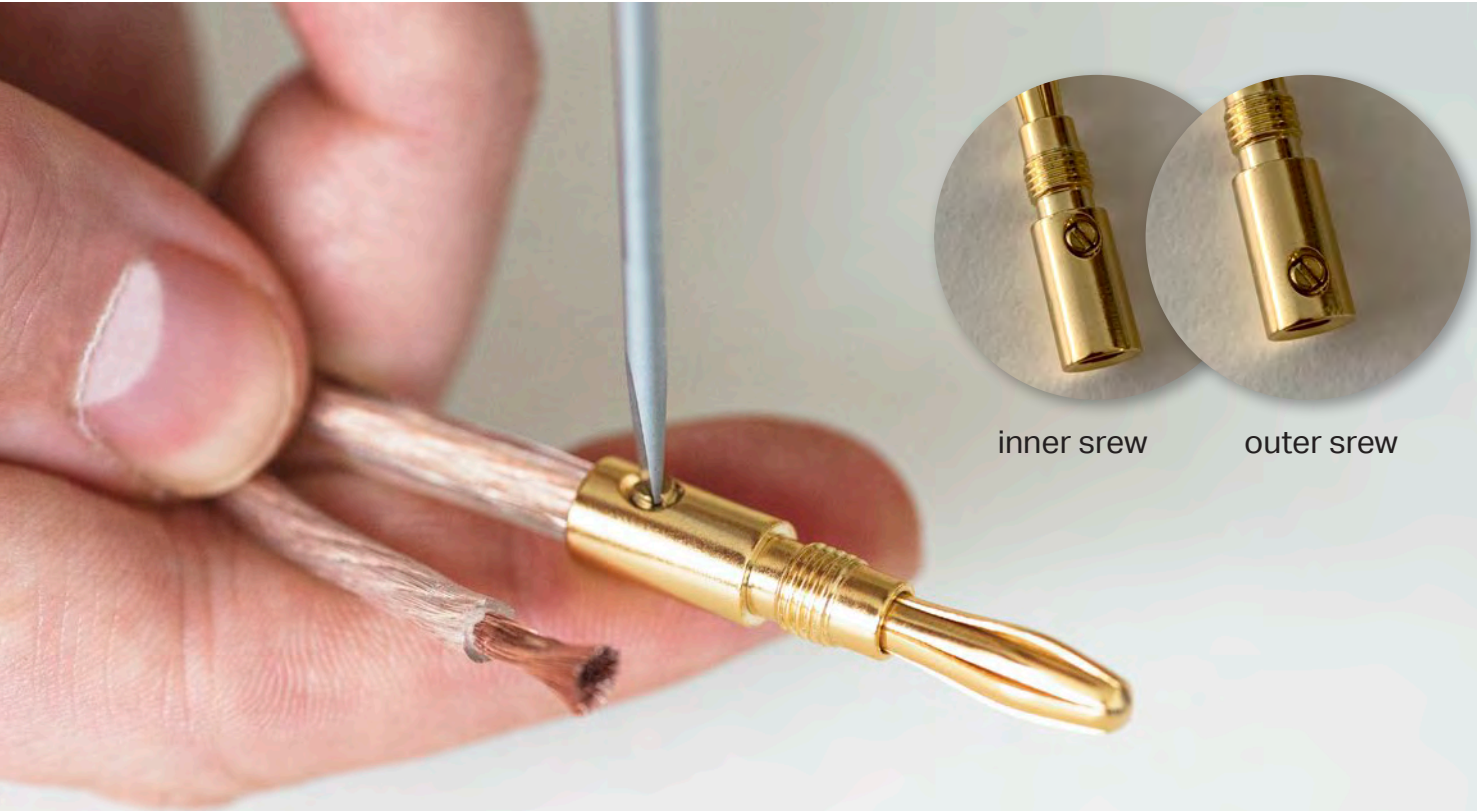
19

Unscrew the plastic housings from the banana plugs.



20

**Screw the metal parts of the plugs onto the cable and put the plastic housing on again.**



inner screw

outer screw

**Important:** Please make sure that the Banana plugs are screwed onto the cable with the included screws. The outer screw is for the strain relief and should be placed on the insulation of the cable. The inner screw should fix the naked wires.

21

Repeat for all eight plugs.





22

Plug speaker cables into the turntable / connect the power cable.

Power cable

Speaker cables  
left and right  
speaker channel



**Please note:** „L“ out is going to the speaker that you see on your left when you're looking at your system. „R“ to the right speaker.

23

Connect each Speaker Box with the turntable.





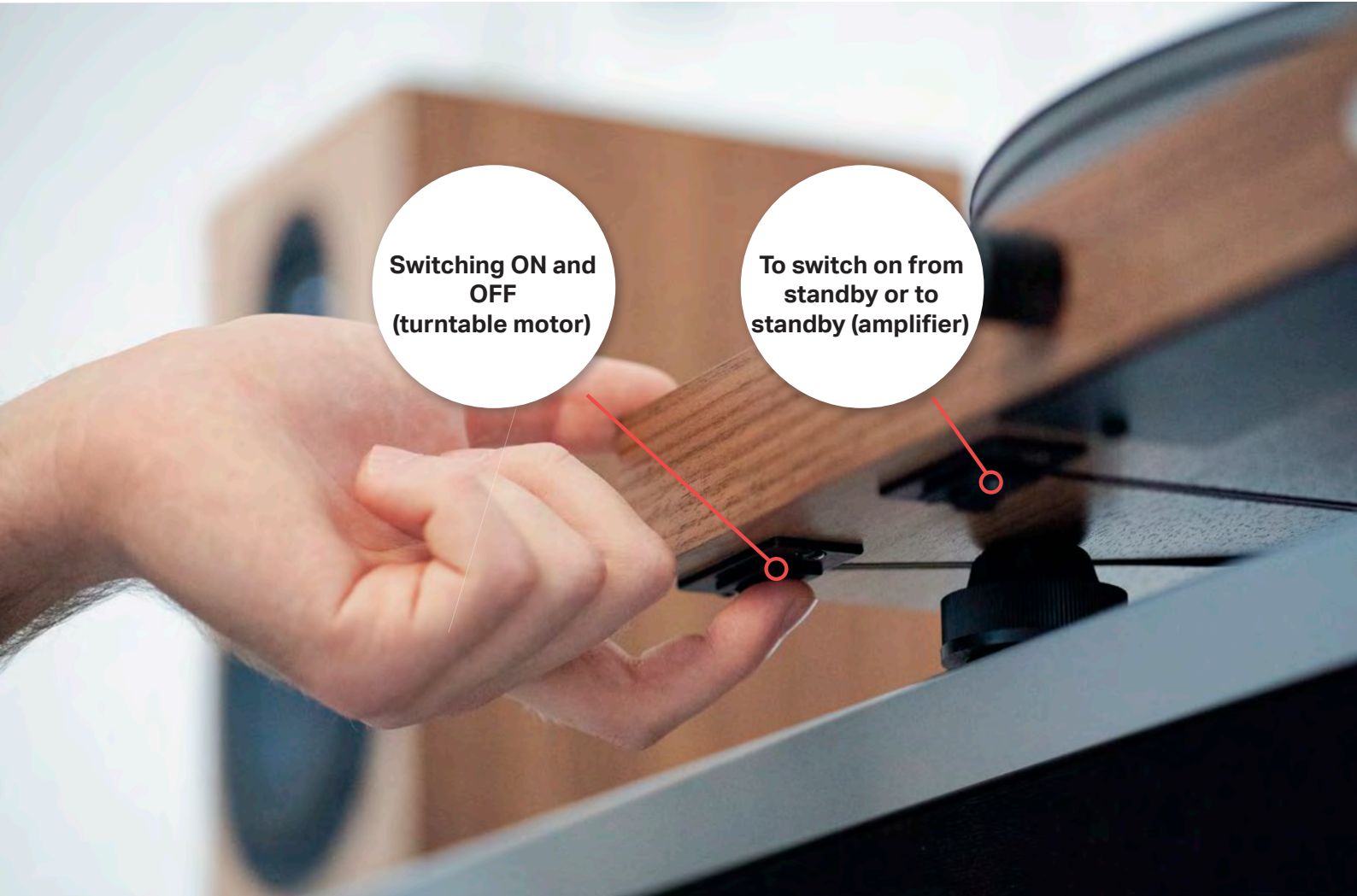
**24**

**Remove tonearm twist tie.**



**25**

## Turning on the Juke Box.



**Switching ON and  
OFF  
(turntable motor)**

**To switch on from  
standby or to  
standby (amplifier)**

# 26

## Control of the unit using the knob on the front.

### Standby

Press the knob for 3 seconds to turn the unit on.

### Input selector

Briefly press the knob to switch between Bluetooth > Turntable > Line In

### Volume

Adjust volume by turning the knob.

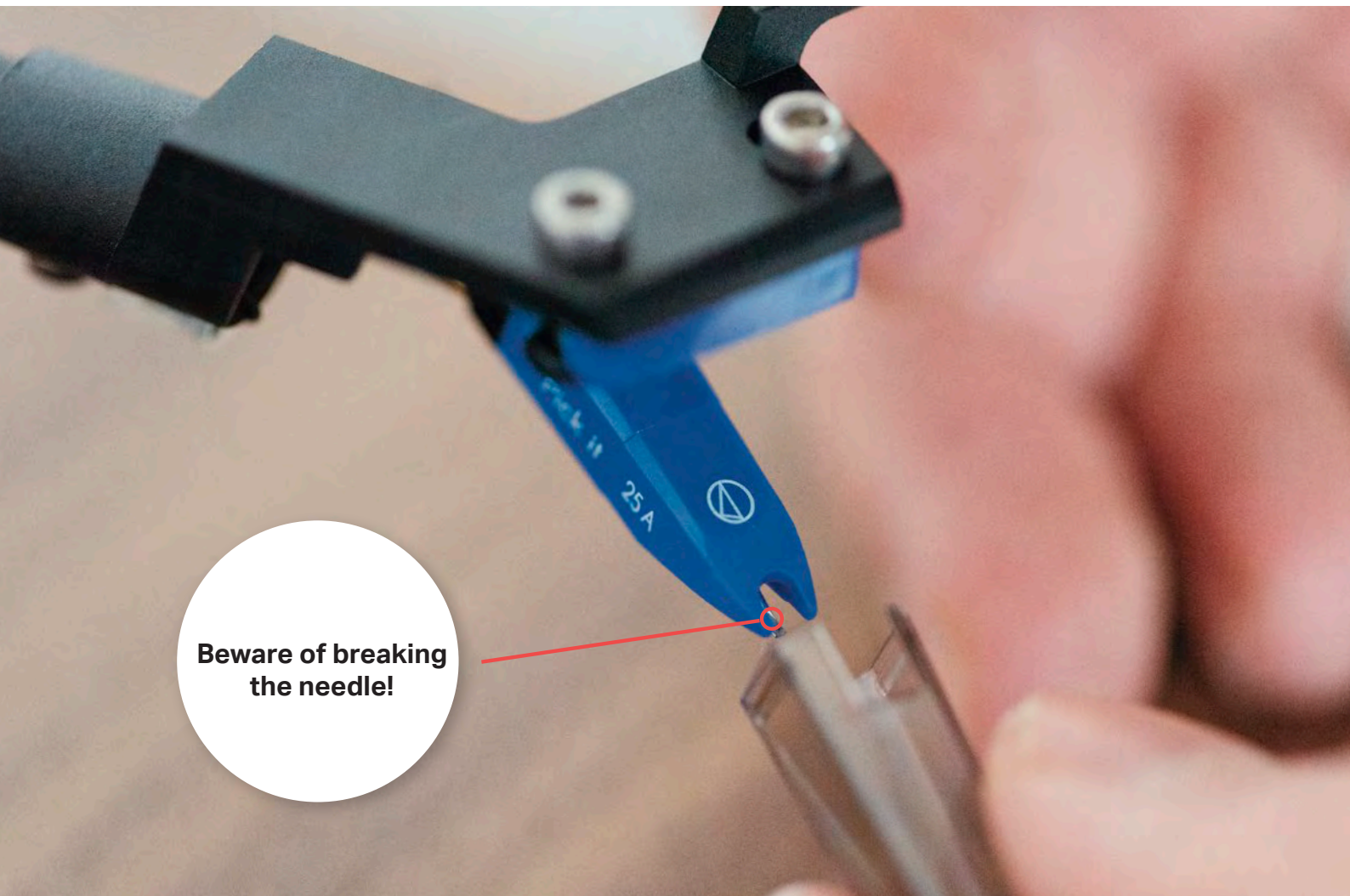


Selected input and  
volume is indicated  
on the display



**27**

**Remove the needle protection cover.**



**Beware of breaking  
the needle!**



**28**

**Play your records**

**Make sure the tonearm lift lever is in an upright position.**



29

Move the tonearm over the lead in groove.





**30**

**Move the tonearm lever down.**



31

Enjoy your music!

