

waterpik®
waterflosser™

Congratulations!

You are now on your way
to better oral health!

✓ Register and Save

Register your product at waterpik.com/registration to receive over **\$50** in savings (includes **50%** off your next order of assorted tips + tip storage case).

✓ Write a Review

Creating innovative Waterpik® products that inspire better oral health is our passion. We invite you to leave a review by sharing your thoughts on the Cordless Select Water Flosser on waterpik.com or the retailer's website.

✓ We're Here to Help

We hope you are loving your new Cordless Select Water Flosser. If for any reason you are not satisfied or have any product questions, please contact our fast and friendly Customer Service Team based in Fort Collins, Colorado. The Cordless Select Water Flosser is backed by a 2-year manufacturer's warranty.

Call: 1-800-525-2774
Monday-Friday
7 am - 5 pm MST



Chat or E-mail
service@waterpik.com



**Quick Start
Guide Inside!**



Register and Save!

Save over \$50!

Register at Waterpik.com/Registration to receive exclusive discount code.

Offer includes
50% off
your next order
of assorted
tips + tip
storage case.



We'd Love to Hear from You!



Connect with Us
@Waterpik



Call: 1-800-525-2774
www.waterpik.com

Waterpik® 14 Day Challenge App



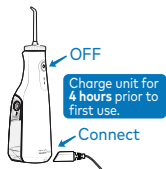
Make water flossing a habit! Try our new mobile App for the best water flossing experience.



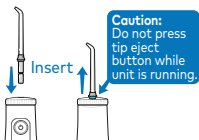
Quick Start Guide

GETTING STARTED

- 1 Power unit OFF before charging. Plug power cord into outlet and connect the charging cord to the unit.



- 2 Press tip firmly into unit until it clicks into place. To remove tip, push the tip eject button.



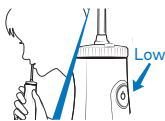
- 3 Disconnect charging cord from unit. Lift the flip top on reservoir and fill with warm water.



Refill as needed.

WATER FLOSS

- 4 With unit OFF, place tip in mouth. Start on low pressure, by pressing the power button once. Press the Power button twice for high pressure.



- 5 Lean over sink. Close lips enough to prevent splashing.

Keep unit upright during use to ensure continuous water flow.



TECHNIQUE

- 6 Aim water at the gumline at a 90 degree angle. Follow the gumline and pause briefly between teeth.



TO AVOID MESS: KEEP TIP IN MOUTH WHILE UNIT IS ON.

NEED HELP?

Visit Waterpik.com/WelcomeWF

To watch a How To Video and find additional product support.

Call Us! 1-800-525-2774