



Chain Checker Plus II

PN 6460701
Made in Taiwan
Specifications subject to
change without notice.

Pedro's NA
P.O. Box 320635
Boston, MA 02132, USA

Pedro's Europe AB
Västra Granholmen 13
SE-18599 Vaxholm, Sweden

Checking your chain for wear is one of the simplest things any cyclist can do to maintain drivetrain performance and minimize maintenance costs. The Pedro's Chain Checker Plus II makes this task quick and easy offering a simple check of 0.5% and 0.75% chain wear. To ensure the maximum life from your chain and accuracy of measurement, the tool employs a three-point design which properly isolates pin wear from roller wear. Other two-point designs do not and can incorrectly indicate a worn chain, robbing the user of additional miles and money. The Chain Checker Plus II also includes a chain hook tool, perfect for simplifying chain removal and installation, and a chainering nut wrench, essential for removal and installation of chainrings. Works on 1-12 speed chains. Chain wear tool approved by SRAM® for use on EAGLE® 12-speed chains. Visit pedros.com/chainfit for compatibility info.

How to Check Chain Wear

1. Position the Chain Checker just above the chain and hold in place with one hand.
2. Use your free hand to push the chain up onto the Chain Checker at position 1 so that a roller is cupped by the curved protrusion. Hold in place with left hand.
3. Use your right hand to push the chain firmly onto the Chain Checker at position 2 to create tension in the chain between the rollers at positions 1 and 2. Continue applying pressure on the chain upward at position 2 and release your hand from position 1.
4. Finally, while keeping pressure at position 2, push the chain onto the Chain Checker at position 3. The Chain Checker II provides two levels of wear indication: If the chain is worn between than 0.5% and 0.75%, the protrusion at position 3 will go half-way through the chain. If the chain is worn more than 0.75%, the protrusion at position 3 will go fully through the chain past the roller. If you cannot push the protrusion through the chain at position 3 at all, then the chain is worn less than 0.5%.

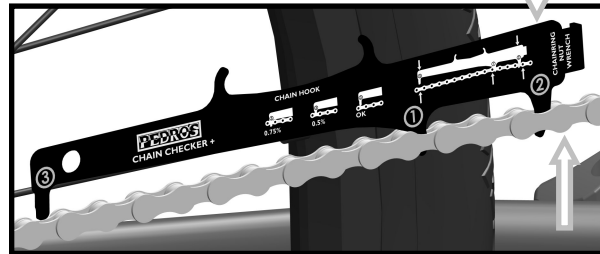
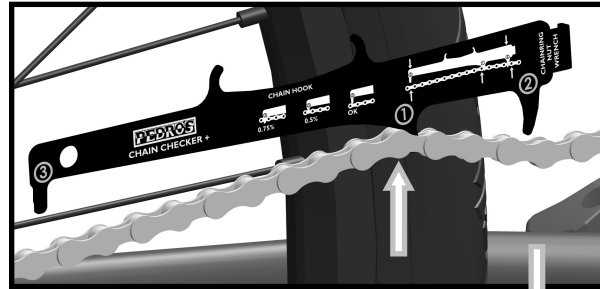
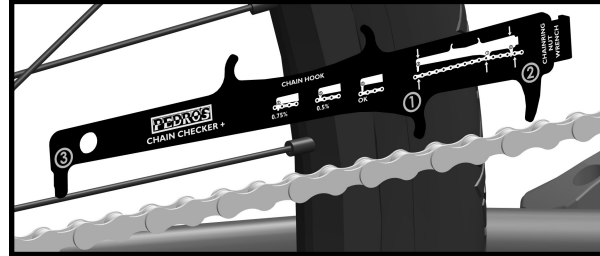
Pedro's and most chain manufacturers recommend replacement at 0.75% wear for single-speed through 10 speed chains, while the agreed upon guidance for 11 and 12 speed chains is replacement closer to the 0.5% wear mark. The Chain Checker Plus II provides indication at these two levels to allow you to decide when best to replace your chain.

How to Use Chain Hook:

1. Position Chain Checker above the chain with the two matching hooks facing downward.
2. First hook one of the two hooks around a roller on the chain.
3. Next locate a roller 5-8 rollers away from the first one and pull it onto the second hook. This will create a slack section of links. See image below.

How to Use Chainering Nut Wrench:

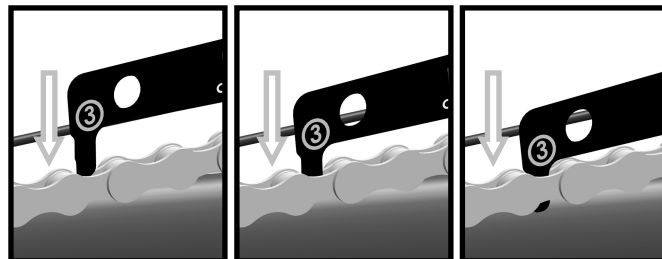
1. Position Chain Checker chainering nut wrench into the slots of a chainering nut and use to hold in place while the chainering bolt is loosened or tightened.



Less than 0.50% Wear

0.50 to 0.75% Wear

More than 0.75% Wear



Chain Hook Use



Chainering Nut Wrench Use

