



Pedro's Folding Repair Stand: Helpful Tips

General Usage:

1. Undo the lowest of the 3 quick release clamps.
2. Unfold both legs towards front of stand. Close quick release clamp when legs are fully open (See Details on this step below)
3. Undo top most of 3 quick release clamps and pivot the head of the stand 270 degrees until it rests on top of stand horizontally facing the front of the stand. Close quick release clamp to lock in place.
4. Undo middle of 3 quick release clamps and slide the top tube positioning the head at desired height. Close quick release clamp to lock in place.
5. Loosen rubber knob at the back of the head to release the front portion of the head, rotate front portion of head to desired angle as shown in attached PDF. Tighten rubber knob to lock rotation of head. Clamps should be vertical if you are clamping a seat tube and horizontal if clamping a top tube. Be careful when clamping a frame tube as too much clamp force can crush the tube on some frames.
6. Before lifting bike into stand, try using the clamping mechanism. There are two main features. The clamp trigger which is large yellow plastic and the release which is small yellow and made of metal. The release controls the engagement of the clamp. When the release is switched up, the internal clamp mechanism is engaged and squeezing the trigger closed the clamp. When the release is switch down, the internal clamp mechanism is disengaged and the jaws slide freely inward and outward.
7. Make sure release is switched up. Lift bike positioning the seat tube between the clamp jaws. Squeeze the trigger repeatedly until the clamps have tightly clamped the bicycle into the stand.
8. If the angle of the bike needs to be adjusted, simply loosen the knob of the back of the stand, rotate bike to desired position, and tighten the knob again.
9. To remove the bike, switch the release to down position and pull the bike towards yourself to open the jaws.

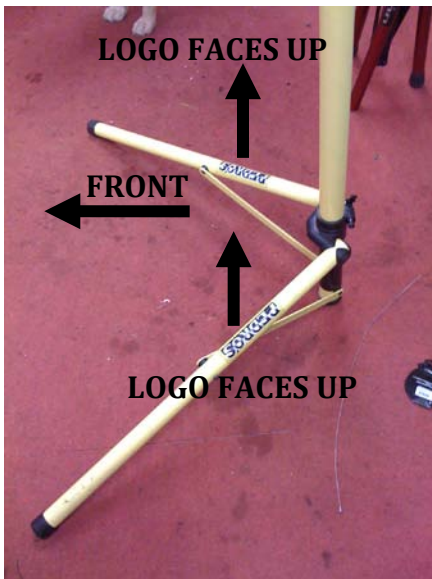


Unfolding the Tripod:

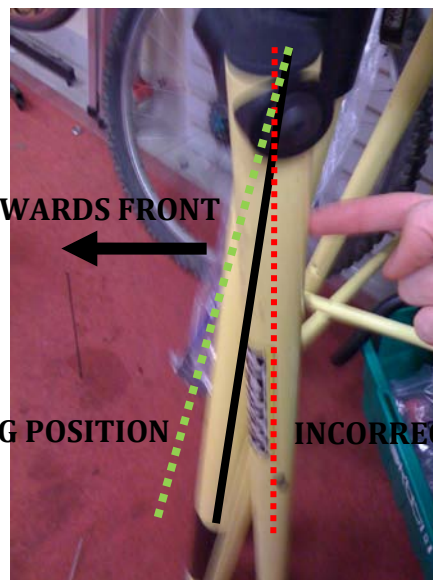
The legs of the Pedro's Folding Repair Stand are very simple to move from the folded position to the "in-use" position. However, occasionally, the legs can move into a position when folded which prevents the stand from opening properly the next time it is unfolded.

With the stand folded take a moment to inspect the legs. You should notice that on one side of each leg, there is a Pedro's logo. This logo faces the front of the repair stand when folded and upward when unfolded. When unfolding the legs, make sure both legs unfold towards the front of the stand. See 1st photo below.

If the legs do not open to the front when the stand is unfolded you may need to fold the legs back up and push the legs so they are positioned in front of the main vertical tube of the stand. The second photo below shows a leg that needs to be pushed forward.



PUSH LEG TOWARDS FRONT



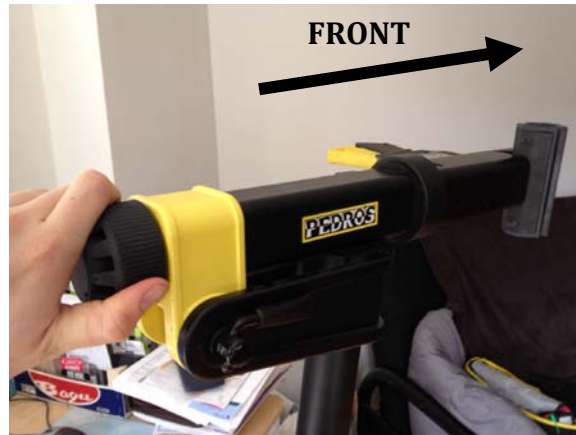
CORRECT LEG POSITION

INCORRECT LEG POSITION



Position of the Head/Clamp:

The head of the Pedro's Folding Repair Stand should be positioned as shown when in use. The knob located at the back of the head is used to adjust the rotation of the clamp. Turn rubber knob counter-clockwise to loosen head to adjust rotation and then tighten knob clockwise to lock position in place. See images below. If left tightened for extended periods of time, the knob may be difficult to release.





REPAIR STAND



Three (3) Year Limited Warranty

The manufacturer warrants each Pedro's Repair Stand against defects in workmanship and materials for three (3) years from date of purchase. This warranty is expressly limited to the repair or replacement of the defective stand and is the sole remedy of the warranty. Claims under this warranty are to be made through an authorized Pedro's dealer or contact Pedro's (800) 887-5588. Proof of purchase is required. The warranty does not apply to the damage or failure due to accident, abuse, or neglect.

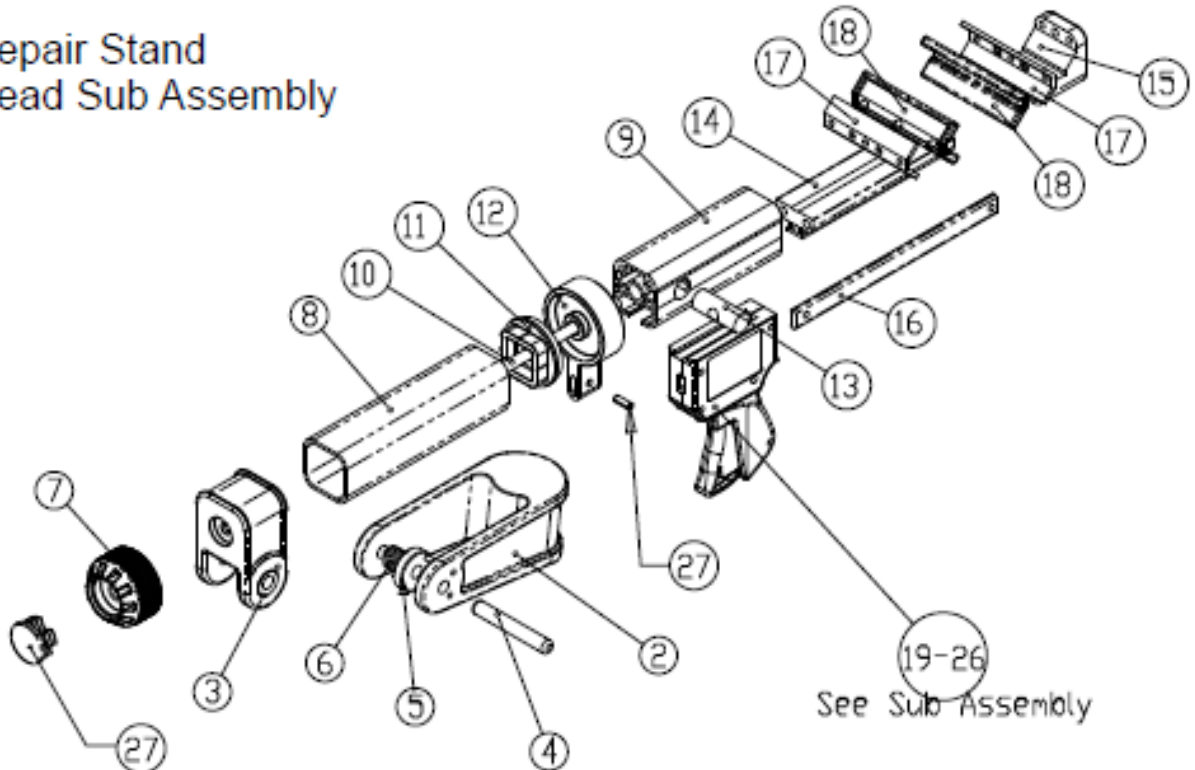
The manufacturer shall not be responsible for the incidental or consequential damages. The user assumes the risk of personal injury, property damage or other losses.

PEDRO'S USA
600 Research Drive
Wilmington, MA 01887
www.pedros.com
978-657-6551

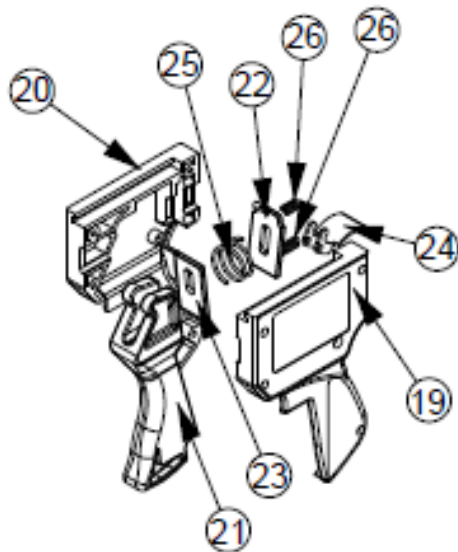


PEDRO'S Europe
a Division of Swix Norway
Box 2043 N-2601
Lillehammer, Norway
+47 612 22 100

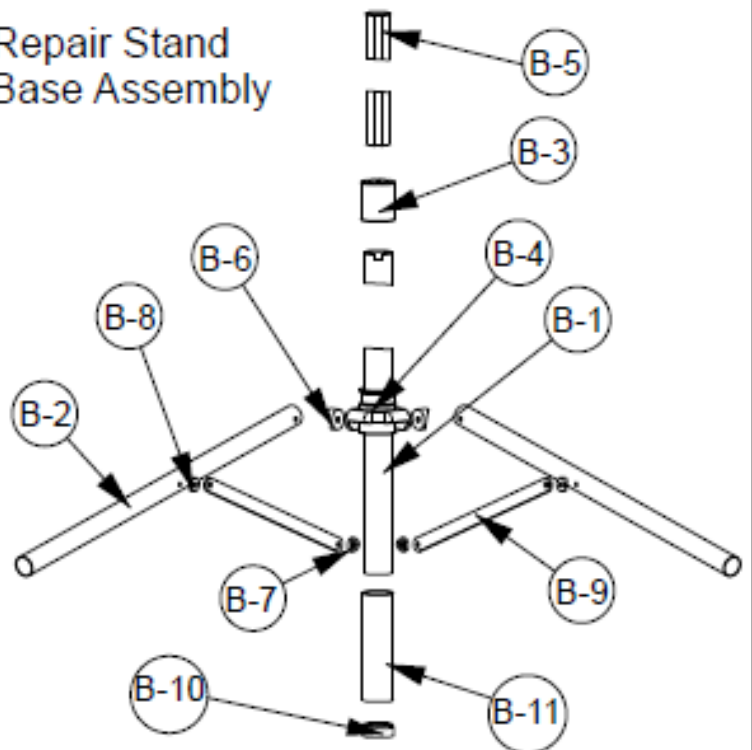
Repair Stand Head Sub Assembly



Repair Stand Handle Sub Assembly



Repair Stand Base Assembly





Folding Repair Stand: Clamp Assembly Replacement

Replacement of the clamp assembly is a fairly simple task. You will need a few common tools:

5mm Hex Wrench

6mm Hex Wrench

Chainring Nut Wrench or Flat Blade Screwdriver (May not be needed)

Step 1: Locate the chainring bolt and nut at the front end of the clamping shaft as shown. Using the 5mm Hex wrench, loosen the chainring bolt while holding the chainring nut in place with your other hand. If needed, hold the chainring nut using a chainring nut wrench or flathead screwdriver. Remove both the bolt and nut completely and set aside.





Step 2: Using a 6mm Hex wrench, remove the outer clamp mount as shown.





Step 3: With clamp lock lever in the open position, slide the clamp handle assembly outward while holding the clamp slide in place as shown. Remove the clamp handle assembly completely.



Step 4: Slide on the new clamp handle assembly over both the clamp slide and clamping shaft. Make sure the clamp lock lever is in the open position before installing. Refer to step 3 photos for correct orientation.

Step 5: Reinstall the outer clamp mount removed in step 2 and tighten bolts using a 6mm hex wrench.

Step 6: Reinstall chainring bolt and nut and tighten lightly using 5mm hex wrench.