



Rack & Pinion Actuator

Model: AirWin Range

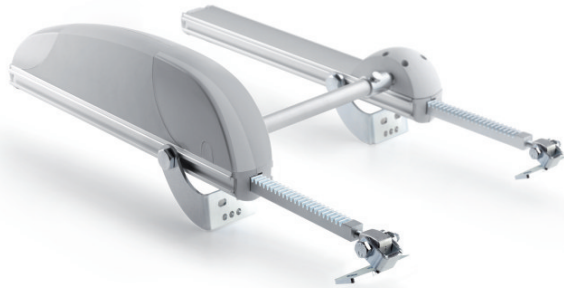


Image shows master & slave configuration. All items are sold separately.

AirWin actuators are available in three models: 650N & 450N with each model being available in both 230VAC 50/60Hz and 24VDC versions.

The actuators are available with the following strokes:

650N version: 180-230-350-550-750-1000 mm.

450N version: 180-230-350-500-750-1000 mm.

The unit comes complete with fixing accessories: support bracket (mounted in any position on the body due to the sliding blocks) and mounting bracket for top hung type openings. Up to 30 actuators can be connected in parallel.

The actuator in the 600N model is also available in the 2W-Net, 3W-Net and 4W-Net versions. W-Net is an innovative communication system that ensures perfect movement control and coordination. No external coordination controller is required, and the connection is made via an RS485 serial port. This system is designed for use with domes requiring horizontal opening or are of a particularly high weight.

The AirWin actuator range complies with the EC Directives ("EMC" directive) as amended.

Colours: Anodized silver with grey trims (RAL7035).

Rack Actuator - Model A45/-

Control Voltage:	230V AC - 3 Core Connection
Control Voltage:	24V DC - 2 Core, Reverse Polarity
Nominal current:	24V - 1.1A : 230V 0.21A
Strokes Available:	A45/180 = 180mm A45/230 = 230mm A45/350 = 350mm A45/550 = 550mm A45/750 = 750mm A45/1000 = 1,000mm
Force/Speed:	450N : 10mm/s
Ingress Protection:	IP 44
Colour:	RAL 7035 - Grey
Fixing Brackets:	All Brackets Included
Length/Weight:	A45/180 = 336mm L - 1.70Kg A45/230 = 336mm L - 1.75Kg A45/350 = 446mm L - 1.90Kg A45/550 = 646mm L - 4.50Kg A45/750 = 846mm L - 5.50 Kg A45/1000 = 1,096mm L - 6.00Kg

Slave Actuator - Model A-/Mech

Drive Mechanism:	Slave Unit
Ingress Protection:	IP 44
Colour:	RAL 7035 - Grey
Fixing Brackets:	All Brackets Included
Length/Weight:	A180 Mech = 336mm L - 1.80Kg A230 Mech = 336mm L - 2.00Kg A350 Mech = 446mm L - 2.40Kg A550 Mech = 646mm L - 3.10Kg A750 Mech = 846mm L - 3.80Kg A1000 Mech = 1,096mm L - 4.60Kg

Rack Actuator - Model A65/-

Control Voltage:	230V AC - 3 Core Connection
Control Voltage:	24V DC - 2 Core, Reverse Polarity
Nominal current:	24V - 1.5A : 230V 0.29A
Strokes Available:	A45/180 = 180mm A45/230 = 230mm A45/350 = 350mm A45/550 = 550mm A45/750 = 750mm A45/1000 = 1,000mm
Force/Speed:	650N : 10mm/s
Ingress Protection:	IP 44
Colour:	RAL 7035 - Grey
Fixing Brackets:	All Brackets Included
Length/Weight:	A45/180 = 336mm L - 1.70Kg A45/230 = 336mm L - 1.75Kg A45/350 = 446mm L - 1.90Kg A45/550 = 646mm L - 4.50Kg A45/750 = 846mm L - 5.50 Kg A45/1000 = 1,096mm L - 6.00Kg

The slave mechanism requires a drive bar and collar set which connects into the master AirWin actuator. These are available in differing lengths. Please contact us for further details.