

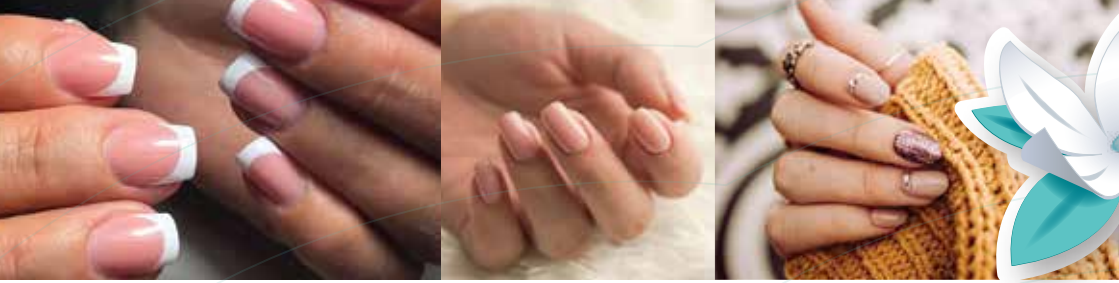
Kikuti



PLACE OF BEAUTY



TREATMENT MENU



MANICURES

ALL HANDS ON DECK

Manicure	60 min	R 295
Male Manicure	60 min	R 280
French Manicure	60 min	R 340
Gel Manicure	60 min	R 365
Gel French Manicure	60 min	R 425
Gel Paint (Prep & Application)	45 min	R 240
Missy Mani (Under 12)	30 min	R 65

HANDY TIPS

Natural or French Tips with Acrylic	75 min	R 420
Natural Acrylic Tips with Gel Overlay	90 min	R 480
Acrylic Gel Overlay	75 min	R 450
Acrylic Overlay - Natural	60 min	R 320
Acrylic Overlay - French	75 min	R 380
Gel Overlay - Bio Sculpture or Nelé	60 min	R 300
Acrylic Sculpture	90min	R 550

ON TOP OF THE WORLD

Acrylic or Gel Fill	60 min	R 250
Acrylic Fill with Gel	75 min	R 320
Acrylic or Gel Fill with Varnish Paint	75 min	R 300

AU NATURALE

Soak Off	30 min	R 50
Soak Off, File, Buff and Paint	60 min	R 180

QUICK FIX

Nail Repair	30 min	R 50
-------------	--------	------

GOTTA HAND IT TO IBX

IBX Natural Nail Treatment X 1	30 min	R 105
IBX Natural Nail Treatment Course X 6	30 min	R 480



PEDICURES

GET BACK ON YOUR FEET

Pedicure	60 min	R 295
Spa Pedicure	70 min	R 380
Spa Pedicure with Gel French	90 min	R 425
Gel Paint (Prep & Application)	45 min	R 250
French Pedicure - Paint, Prep & Application	60 min	R 295
Male Pedicure	60 min	R 280
Missy Pedi (Under 12)	30 min	R 75

BEST FOR LAST

Elim Medi Pedi	75 min	R 425
Elim Medi Pedi with Paint	90 min	R 450
Elim Medi Pedi with Gel	90 min	R 595
Elim Medi Pedi with French Gel	90 min	R 625

ADD-ONS

GIVE ME MORE!

Nail Sticker Art per Nail	15 min	R 10
Paint on Nail Art per Nail	30 min	R 20
Varnish or Re-Varnish	30 min	R 120
Paraffin Dip	15 min	R 80
Foot or Hand Soak and Exfoliate	30 min	R 175

Spa



EPILFREE PAIN FREE HAIR REMOVAL

EPILFREE INCLUDING WAX

Safe, natural & effective: Epilfree is a Laser / IPL free hair removal treatment. Enhance your waxing routine with Epilfree and get lasting laser like results. Epilfree is part of a comprehensive treatment which inhibits and slows down re-growth of body and facial hair. There is never a danger of pigmentation before, during or after treatments. A single treatment on a limited area will give visible results within weeks.

TREATMENT	DURATION	LADIES	GENTS
1/2 Leg	45 min	R 680	R 800
3/4 Leg	60 min	R 875	R 995
Full Leg	45 min	R 1050	R 1150
Bikini or Underarm	30 min	R 480	
Brazilian	60 min	R 800	
1/2 Arm	30 min	R 500	R 528
Full Arm	60 min	R 720	R 792
Stomach	30 min	R 495	R 1150
Lip, Brow or Chin	30 min	R 385	
Lip, Brow and Chin	60 min	R 780	
Back and Chest or Back and Stomach	45 min	R 780	R 1250
Back, Chest and Stomach	90 min		R 2850

Book and pay for 5 sessions and get the 6th session free. Terms and conditions apply.



WAXING

TREATMENT	DURATION	LADIES	GENTS
1/2 Leg	30 min	R 185	R 200
3/4 Leg	30 min	R 220	R 260
Full Leg	45 min	R 250	R 300
Bikini	15 min	R 140	
Brazilian	45 min	R 200	
Hollywood	45 min	R 250	
Under Arm	15 min	R 110	R 130
1/2 Arm	20 min	R 150	R 150
Full Arm	40 min	R 200	R 220
Full Face	30 min	R 200	
Brow and Lip	30 min	R 145	
Brow, Lip and Chin	30 min	R 200	
Half Leg, Bikini and Underarm	60 min	R 380	
Back, Chest or Stomach	30 min	R 180	R 350
Back, Chest and Stomach	60 min		R 685
Brow, Chin, Ear, Lip or Nose	15 min	R 80	R 80
Full Face, Underarm, Bikini, 3/4 Leg, Full Arm	90 min	R 770	
Feet & Toes	15 min	R 90	

Spirella



EXUVIANCE FACIALS

HYDRATION STATION

60 min R 650

Restores moisture, improves strength and plumpness
For all skin types

ACNE ATTACK

60 min R 620

Clarifying & pore refining
For oily and acne prone skin

AGE REWIND

60 min R 670

Anti-aging facial targeting fine lines, wrinkles, poor texture and loss of firmness
For mature skin

SUPERNATURAL O2

90 min R 780

A triple oxygenating blend delivers an infusion of pure essential oxygen to detoxify and re-energize your skin to restore a youthful, luminous complexion bionic oxygen facial is an ideal step following an exuviance peel or whenever skin needs a restorative boost of radiance
For all skin types

TEEN FACIAL

45 min R 375

A teen facial includes a professional skin analysis to zero in on your specific skin problems. Includes skin exfoliation, thorough and deep pore cleansing, steaming, extractions, appropriate masque and moisturizer

ADD A PEEL TO ANY FACIAL

Face Only
Face, Neck & Décolleté

R 150
R 280

**Recommended 4 - 6 treatments @ 4 week Intervals*



REGIMA FACIALS

CLEAN AS A WHISTLE

60 min R 450

A deep cleansing facial to unblock congested skin, helping to balance hormones within the skin responsible for breakouts
For teenage or adult acne

YOUNG AND YOUTHFUL

60 min R 550

A rejuvenating, hydrating, nourishing treatment with anti-oxidant and anti-aging action. Helps to reverse and prevent the effects of cigarette smoke and carbon monoxide, soothes and calms irritated skin
For dry, dehydrated, sun damaged, aging and wrinkled skin types

REGIMA PEELS

LIKE A VIRGIN

45 min R 450

A "ONCE OFF" introductory peel for first time RegimA clients with very sensitive, dry, dehydrated skin

A LITTLE R & R - 30% POWER PEEL

60 min R 640

A rejuvenating and repairing mask with rapid penetration and minimal down time
For all skin types

DOUBLE WHAMMY INTENSIVE PEEL

60-75 min R 800

For sun damaged, thick skin and problematic, dry, wrinkled skin

TAKE ME TO ANOTHER LEVEL - 50% POWER PEEL

45 min R 550

A damage repair peel with a deeper penetration, targeting specific skin conditions
For all skin types especially pigmented, sun damaged, wrinkled and aging skin



DERMAPEN MICRONEEDLING

SKIN NEEDLING THERAPY

Dermapen advanced skin needling promotes scarless healing and the deposition of normal woven collagen, similar to fractional laser treatments but without the side effects and downtime. Dermapen is more effective than most microdermabrasion and chemical peels

Targeting:

- Aged sagging skin
- Pigmentation
- Large pores
- Stretch marks
- Scarring (acne, surgical and burns)
- Fine lines and wrinkles
- Alopecia (when used in conjunction with a topical treatment)
- Skin tightening and rejuvenation
- Smoker's lines around the lips

TREATMENT	DURATION	PRICE PER SESSION	ADD UBER PEEL
Face or Specific Targeted Areas on the Body (Size Dependant)	45 min	R 1000	R 250
Face & Neck	45 min	R 1280	R 300
Face, Neck & Décolleté	60 min	R 1480	R 400
Face, Neck, Décolleté & Hands	75 min	R 1680	R 450

**Discount on 6 sessions or more, ask your therapist*

GALVANIC

15 min R 120

Works to improve blood flow and lymphatic drainage in the areas it is applied on, this helps the skin cleanse itself naturally and assists with black head relief, helps reduce wrinkles, improves hydration and moisture levels, reduces pore size and facial redness, neutralizes impurities and improves skin tone

HIGH FREQUENCY

10 min R 120

Helps treat and prevent stubborn acne, shrink enlarged pores, reduce the appearance of fine lines and wrinkles, decongest puffy eyes, fade dark eye circles

EYE CONTOUR TREATMENT

10 min R 120

Calming, firming and hydrating



MASSAGE

BODY BLISS

Swedish Back and Neck	30 min	R 280
Swedish Full Body	60 min	R 450
Aromatherapy	60 min	R 450
Hot Stone Back, Neck and Shoulder	40 min	R 380
Hot Stone Full Body	60 min	R 480
Pre-Natal Head, Neck and Back	30 min	R 280
Indian Head Massage	30 min	R 210
Back Exfoliation and Massage	50 min	R 550
Full Body Exfoliation and Massage	75 min	R 680

TINTING

MORE THAN MEETS THE EYE

Eyelash Tint		R 70
Eyebrow Tint		R 70
Brow and Lash Tint		R 140
Brow Wax and Tint	30 min	R 140
Brow Shape with Henna	45 min	R 250

BROW LAMINATION

Brow Lamination		R 430
*Add Tint and Wax		R 170

BAT AN EYELASH

Eyelash Extensions Full Set (Volume)	120 min	R 800
Eyelash Extensions	120 min	R 650
Lash Fill after 2 Weeks	60 min	R 420
Lash Fill after 3 Weeks	60-90 min	R 520
Lash Removal	30-45 min	R 180



SPECIAL PACKAGES

SPA SPECIALITY

Any 3 of the Following (30 min)

- Swedish Back and Neck Massage
- Indian Head Massage
- Full Body Exfoliation
- Express Mani or Pedi and Parrafin Dip

90 min R 1250

OR

Any 2 of the Following (45 min)

- RegimA Facial
- Swedish Back and Neck Massage
- Indian Head Massage
- Mani or Pedi and Parrafin dip

90 min R 1050

MIND BODY AND SOUL

Pamper your Entire Body with a Full Day Spa Package Including:

- Full Body Exfoliation
- 60 Minute Aromatherapy Massage
- 60 Minute Hydrating Facial
- Luxury Manicure and Pedicure with Parrafin Dip

R 2050

FOOD AND DRINKS

Breakfast Continental

R 300

Brunch Continental

R 300

3 Course Cold Lunch

R 480

**Prices are per person*

**Add dry, sweet, rosé or non-alcoholic sparkling wine – R200 per bottle*

**Add dry white, dry red, sweet red or non-alcoholic wine – R140 per bottle*



TAN CAN (VERTICAL SUNBED)

BOOK YOUR ERGOLINE SUN DASH VERTICAL SUNBED SESSIONS FOR A SPECTACULAR GLOW ALL YEAR ROUND

1 Session	10 min/Session	R 65
5 Sessions	10 min/Session	R 275
10 Sessions	10 min/Session	R 550

* 10 sessions to be used within 6 weeks

* If the session is not cancelled within 12 hours prior to the appointment the session shall be forfeited

OUR RANGE INCLUDES:



CHECK IN POLICY

Please ensure that you are at Kikuti Place of Beauty for your pampering at least 5 minutes prior to your scheduled appointment.

CANCELLATION POLICY

Cancellations must be made 24 hours in advance as our therapists are scheduled especially for you, failing to do so will result in a compulsory 50% cancellation fee.

LATE ARRIVALS

Your treatment will be reduced accordingly to accommodate the amount of time available.

PAYMENT

All treatments are to be settled with cash or card prior to departure. Tips for the therapists will only be accepted in cash.

GIFT VOUCHER POLICY

Gift vouchers are available and will be issued with a monetary amount, vouchers are valid for a period of 1 year. Any difference between the voucher and treatment booked to be settled on departure.

ACCEPTANCE OF TERMS & CONDITIONS

Please Note: Scheduling an appointment with Kikuti Place of Beauty is acknowledgement of our terms and conditions.

SALON HOURS

Monday – Friday: **08:00 am – 6:00 pm** / Saturday: **08:00 am – 4:00 pm**

COMMUNICATION:

Monthly specials will be published on our Kikuti Place of Beauty Facebook page and communicated via Email, Whatsapp and SMS.

LOCATION & DIRECTIONS:

The Wilds, Stand 1139 Jagluiperd Street, Leopards Den, Pretoria East

Proceed through gate 1 at the Wilds Estate;
at the first circle turn right, through the boom into Leopards Den;
turn immediately left into Jagluiperd Street;
Kikuti Place of Beauty is on your right after the sharp bend
(Corner of Jagluiperd Street and Tierboskat Street)

TO MAKE AN APPOINTMENT CALL:
082 725 2327