

# WiFi Meter Setup Guide

Requires the iOS/Android app for initial setup



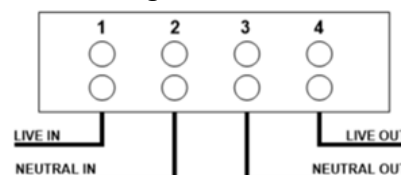
It is recommended that this electric meter is installed by a competent electrician in accordance with BS7671 and the IET Code of Practice

- ✓ The WiFi module works with 802.11b/g/n 2.4GHz networks
- ✓ You will need the free iOS or Android app for pairing the meter with a local WiFi network
- ✓ The module can be hot-swapped onto compatible Emlite base meters

## Mounting the meter

1. The meter must always be installed indoors or a suitable IP rated cabinet. The meter should not be in an enclosed metal cabinet as this could adversely affect the WiFi signal.
2. The meter must be securely mounted to a wall, meter board, or backing plate.
  - a. Unscrew and remove the lower-front meter panel to expose the terminal connections.
  - b. There is a hanging point on the back of the meter. Using this, hang the meter using a flat headed screwdriver. The width of the screw head must not exceed 5mm to ensure it fits the hanging point correctly.
  - c. Finally, the meter should be firmly screwed to the wall or board using the bottom mounting holes located under the terminal cover.

3. Wire the meter into your installation following the diagram:



## Pairing the meter with a Wi-Fi network



3. After powering up the WiFi meter for the first time, the LEDs will flash blue and red. Press (B) once to bind the module with the base meter. The meter will start its own WiFi network that can be joined from a smart phone. Both LEDs will be steady blue when the access point is ready to be joined.
4. Open the WiFi Smart Meter Setup Tool app and follow the instructions to set the network name and passcode to the meter. When completed, a message will show 'Successfully set to meter'. When the meter has joined the network the LEDs will be solid green and blue.

## LED Operations

Module is not paired with base meter: Press (B) to bind

Left LED  FLASH  
Right LED  FLASH

Installation Mode - Resetting

Left LED  On  
Right LED  Off

Installation Mode - Establishing access point

Left LED  On  
Right LED  FLASH

Installation Mode - Access point ready to be joined

Left LED  On  
Right LED  On

Normal mode - Sequence Reset

Left LED  On  
Right LED  Off

Normal mode - Establishing connection to router

Left LED  On  
Right LED  FLASH

Normal mode - Usual state

Left LED  On  
Right LED  On

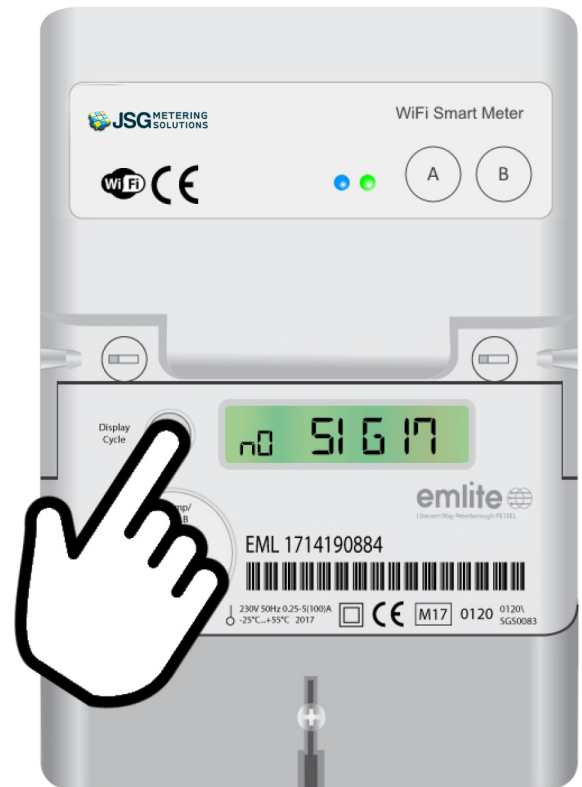
Normal mode - Sending reading to Openmetrics

Left LED  On  
Right LED  FLASH

## Checking Wi-Fi signal strength

5. Press the display cycle button to show the WiFi signal strength. The number indicates signal quality on a scale of 1 to 31, with 31 being maximum signal.

To ensure reliable automatic meter reading the signal strength should be above 7. Below this and you may need to install WiFi extenders to improve coverage.



Push Display Cycle to show WiFi signal strength

### Got a question?

For technical queries about an installation or if you have trouble using the WiFi smart meter, get in touch with us by calling 01883 460411 or send an email to [support@openmetrics.co.uk](mailto:support@openmetrics.co.uk).

### Free iOS/Android app

Download the iOS or Android app then add your meter using the unique meter serial number starting EML