

BOMBA AUMENTADORA DE PRESIÓN PARA CALEFONT EDR



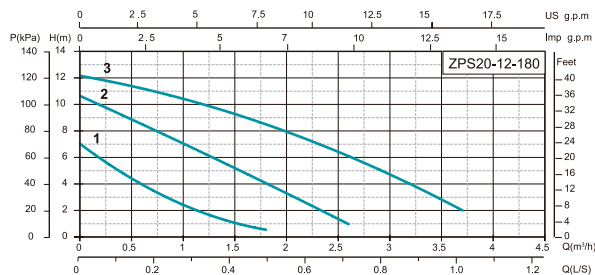
PRINCIPAL APLICACIÓN:

- Presurización de agua para calefones

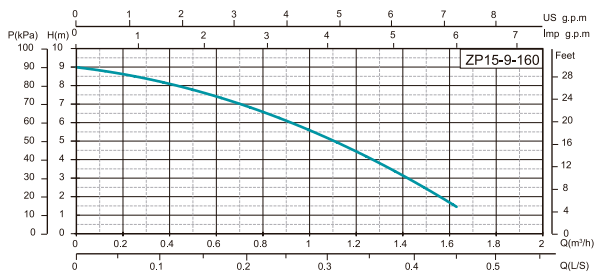
CARACTERÍSTICAS

- Potencia máxima: 120 w modelo DPA 15-90-160 y 245 w modelo ZPA 20-12 180
- Caudal máximo: 26 l/min modelo DPA 15-90-160 y 58 l/min modelo ZPA 20-12 180
- Tensión: 220V~
- Bajo consumo de energía
- Funciones manual o automático con flujostato
- Material resistente a la corrosión
- Flujostato interno
- De fácil instalación
- Garantía: 1 años
- Temperatura del líquido de 2°C a 90°C
- Temperatura ambiente de 40°C
- Máxima presión del sistema de 10 BAR
- Nivel de protección IP44

► Garantía 1 año
(según nuestras condiciones generales de venta)



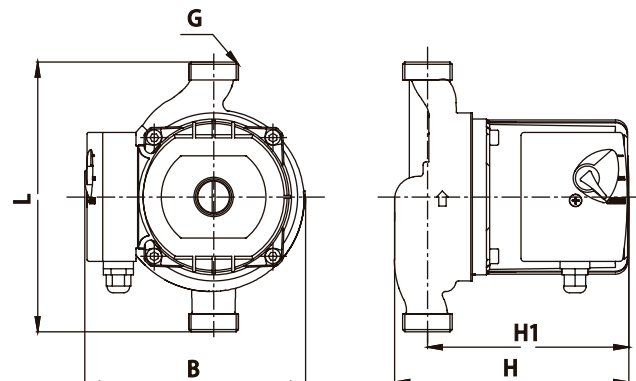
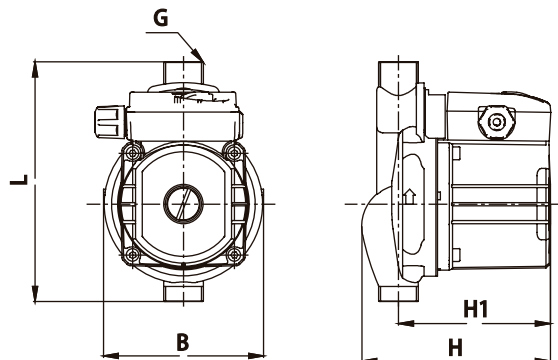
| MODELO | Q | m3/h | 0 | 0,5 | 1 | 1,5 | 2 | 2,5 | 3 | 3,5 |
|----------------------|---|------|----|-----|------|-----|---|-----|-----|-----|
| 202700 ZPA-20-12 180 | H | m | 12 | 11 | 10,5 | 9 | 8 | 6 | 4,5 | 3 |



| MODELO | Q | m3/h | 0 | 0,2 | 0,4 | 0,6 | 0,8 | 1 | 1,2 | 1,4 | 1,6 |
|----------------------|---|------|---|-----|-----|-----|-----|-----|-----|-----|-----|
| 202698 DPA-15-90-160 | H | m | 9 | 8,5 | 8 | 7,5 | 6,5 | 5,5 | 4,3 | 3 | 1,8 |

| MODELO | POTENCIA P1 (W) | CORRIENTE (A) | VOLTAJE (V) | FRECUENCIA (HZ) |
|---------------|-----------------|---------------|-------------|-----------------|
| ZPA 20-12 180 | 245 | 1,04 | 220 | 50 |
| DPA 15-90-160 | 120 | 0,48 | 220 | 50 |

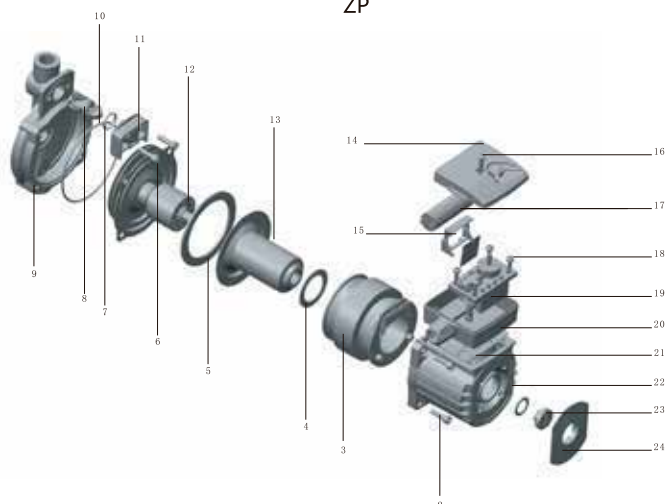
BOMBA AUMENTADORA DE PRESIÓN PARA CALEFONT EDR



ZP

ZPS

| MODELO | G | DIMENSIONES | | | | PESO kg. |
|---------------|------|-----------------|-----|-----|-----|-------------|
| | | UNIONES | H | H1 | L | |
| DPA 15-90-160 | 3/4" | G 3/4" - G 1/2" | 125 | 102 | 160 | 2,6 |
| ZPA 20-12 180 | 1" | G 1" - G 3/4" | 156 | 135 | 180 | 4,6 |



1

| Pos. | Component | Material |
|------|-------------------|-----------|
| 1 | O-ring | EPDM |
| 2 | Hex Socket Screws | Steel |
| 3 | Stator | / |
| 4 | Sealing Ring II | EPDM |
| 5 | Sealing Ring I | EPDM |
| 6 | Hex Socket Screws | Steel |
| 7 | O-Ring | EPDM |
| 8 | Flow Switch | / |
| 9 | Pump Body | Cast Iron |
| 10 | O-ring | EPDM |
| 11 | Flow Switch Cover | PA66G30 |
| 12 | Impeller | PESG30 |
| | Shaft | Ceramic |
| | Thrust Bearing | Graphite |
| | Radial Bearing | Ceramic |

| Pos. | Component | Material |
|------|-----------------------------|-----------------|
| 13 | Rotor Can | Stainless Steel |
| 14 | Terminal Box Cover | ABS |
| 15 | Circuit Board Bracket | PA66G30 |
| 16 | Self-tapping Screw | Stainless Steel |
| 17 | Capacitor | / |
| 18 | Screws | Steel |
| 19 | Circuit Board | / |
| 20 | Terminal Box Base | PA66G30 |
| 21 | Terminal Box Sealing Gasket | EPDM |
| 22 | Stator Housing | Aluminium |
| 23 | Air Cock | Brass |
| 24 | Nameplate | PA6 |