

## INSTALLATION INSTRUCTIONS

**THIS ANCHOR MUST BE INSTALLED BY A COMPETENT PERSON PRIOR TO THE OPERATOR ATTACHING TO IT.**

Positioning of the anchor is crucial for safety. Height of the fall and rope stretch

should be carefully considered.

Users must be adequately trained and take care to adjust the safety line length to ensure that the user will not be able to fall off any edge of the roof.

AS/NZS 1891.4 sets out the safe use of anchors, in particular, safe access and

avoiding lateral swing.

This anchor should never be installed on the ridge line or ridge capping of a roof.

## TO INSTALL ANCHOR FOLLOW THESE STEPS:

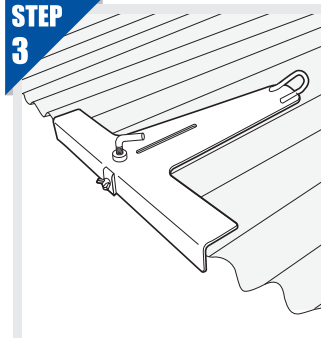
**STEP 1**

INSPECT THE ATTACHING AREA IN ACCORDANCE WITH INSTRUCTIONS ABOVE AND AS/NZS1891.4

**STEP 2**

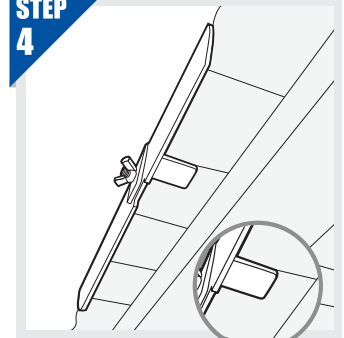
INSPECT THE ANCHOR IN ACCORDANCE WITH INSTRUCTIONS ABOVE AND AS/NZS 1891.4

**STEP 3**



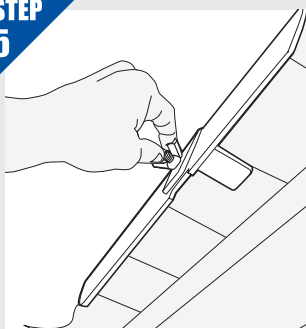
SIT THE ANCHOR ON TOP CORRUGATION OF ROOFING IRON AS SHOWN

**STEP 4**



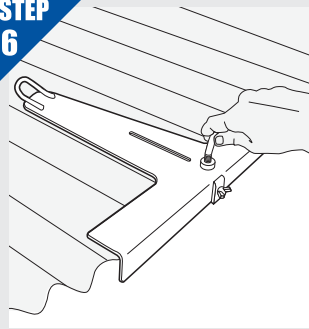
ENSURE BOTTOM TAB IS UNDER TOP CORRUGATION OF ROOFING IRON AS SHOWN

**STEP 5**



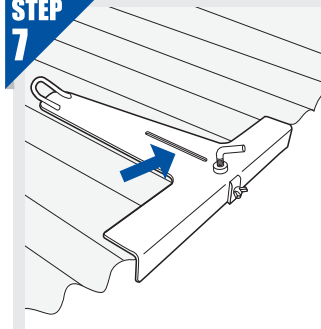
ENSURE WING NUT IS TIGHTENED TO SECURE BOTTOM TAB AS SHOWN

**STEP 6**



ENSURE L BOLT IS TIGHTENED ONTO ROOFING IRON TO CLAMP ANCHOR TO ROOFING IRON.

**STEP 7**



SCREW IN A ROOF SCREW THROUGH THE SLOTTED SECTION IN FRONT OF THE L-BOLT AS HIGHLIGHTED BY THE BLUE ARROW

**STEP 8**

DO NOT WORK OUTSIDE AN ARC OF 30 DEGREES EITHER SIDE OF THE CENTRE LINE OF THE ANCHOR TO REDUCE THE DANGER OF SWING FALL HAZARDS.

ALWAYS WORK A MINIMUM OF 2M FROM UNPROTECTED EDGE.

TO REMOVE THE ANCHOR, SIMPLY REVERSE THE PROCESS USED FOR INSTALLATION.

## MAINTENANCE

**WARNING – MAINTENANCE AND REASSEMBLY ARE TO BE CARRIED OUT BY A COMPETENT PERSON KNOWLEDGEABLE IN THE REPAIR AND MAINTENANCE OF THIS ANCHOR.**

## STORAGE

This anchor should not be subjected to unnecessary strain or pressure or to excessive heat, humidity or moisture. This anchor must be protected from contact with sharp edges, corrosive substances and other possible causes of damage.

## OBSOLESCENCE

If the anchor has been used to arrest a fall or upon inspection shows any defect it must be withdrawn from service immediately.

If the labels/stickers on the anchor are removed from the anchor, it must be withdrawn from service immediately.

In the absence of the above, this anchor should be removed from service after 5 years.

## DISCLAIMER & CONDITION OF USE

The user of this anchor must be competent and trained in height safety in accordance

with AS/NZS 1891.4 before using this device. The owner of this anchor must ensure that anchors are properly labeled and instructions for safe use and appropriate installation guidance are supplied to the user.

No responsibility will be accepted by Ballantyne Safety for damage, injury or death resulting from the use or misuse of this anchor. The user personally assumes the risks and responsibilities for any damage, injury or death which may result from using this anchor. If you are not in a position or able to assume this responsibility or to take these risks, do not use this anchor.