

Interlace

60 INCH VANITY UNIT
INT021-60-BLONDE

Designed in Australia by Zuster, and is available exclusively at Reece USA.

The Interlace vanity is inspired by mid-century architecture and characterized by clean lines, intricate pattern of simplicity and floating, elevated design. Named for its intricate interlaced pattern carved in solid American Oak, this handcrafted, refined pattern detail wraps around the base of the vanity and full-length handle. The Interlace vanity is constructed from American Oak with a mitered frame and three soft close doors with internal fixed shelves.



To see the complete range go to <https://reecebathandkitchen.com/collections>

About Zuster -

Inspired by Australian living, Zuster is Dutch for sister. Designed in Australia by an extraordinary duo Wilhelmina McCarroll and Fleur Sibbel, uniquely reimagining the bathroom space, Zuster is the ultimate representation of magnificence & detail, inspired by our surroundings. Bringing a modern Australian design approach to unlock the resurgence of American Oak. Inside and out, Zuster bathroom furniture has been impeccably designed through craft and refined finishing, making each piece a statement of glamour and luxury. Its magnetic beauty paired with macro detail makes Zuster one of a kind.

Disclaimer: Products in this specification manual must by regulation be installed by licensed and registered trade people. The manufacturer/distributor reserves the right to vary specifications or delete models from their range without prior notification. Dimensions are nominal measurements only. Dimensions and set-outs listed are correct at time of publication however the manufacturer/distributor takes no responsibility for printing errors.

Published 30/05/2023

Interlace

60 INCH VANITY UNIT
INT021-60-BLONDE

Standard Size

Width (inch)	60"
Depth (inch)	21 7/8"
Height (inch)	34"
Number of doors	3
Sinks	2

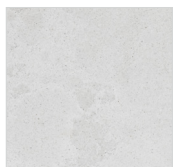
Specifications

Recommended Use	Domestic, Hotel & Commercial
Vanity Cabinet Material	American Oak solid and veneer
Vanity Frame Material	Handcrafted mitrered frame in American Oak veneer with 2 Pack Polyurethane on High Moisture Resistant MDF
Door Design	Soft close doors with Blum hinges
Benchtop Material	Glacier Quartz
Handles Material	Blonde Oak
Vanity Finish	Blonde Oak
Fixing	Bolted / Screwed to Wall by a Licensed Trades Person (not included) Please refer to the Installation instructions. Document on the Website for more information.
Designed in	Australia
Manufactured in	Vietnam

Cleaning Recommendations -

Our timber frame should be cleaned with a mild, non-acidic, non-abrasive detergent and soft cloth. Finish by cleaning off detergents with a soft damp cloth and towel dry. Always clean spills and water immediately.

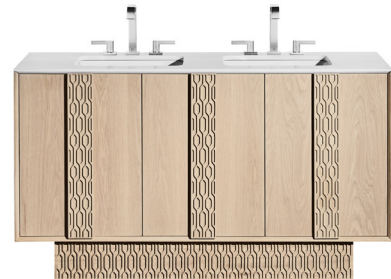
Finishes -



Glacier (Quartz)
Bench Top and Handle



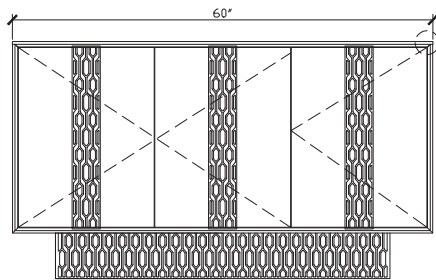
Blonde Oak (American Oak)
Vanity Cabinet



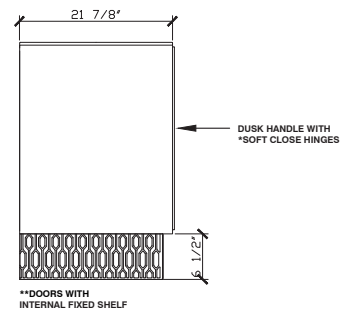
High quality moisture resistant American Oak veneer and solid American Oak.

Interlace

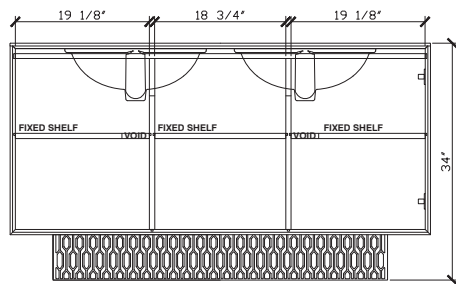
60 INCH VANITY UNIT
INT021-60-BLONDE



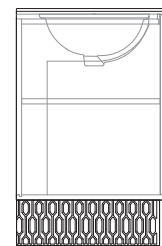
Front View



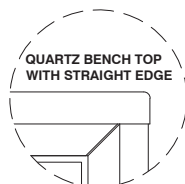
Side View



Internal Front View



Internal Side View



Detail (bench top) Front View

Interlace

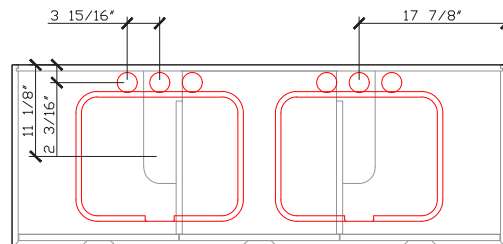
60 INCH VANITY UNIT
INT021-60-BLONDE

Waste and taphole cutout -

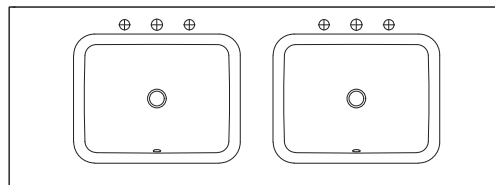
Sink: Kohler caxton rectangle 20-1/4" rectangular undermount bathroom sink K-20000-0 - Sold Separately

Faucet: Dornbracht Imo Three-hole lavatory mixer with drain 20 713 670-060010 - Brushed Platinum - Sold Separately

Double sink **only**



Waste Cutout Top View



Basin Top View