

6V | 12V | 24V

GENIUSPRO25



# A MULTI-VOLTAGE PROFESSIONAL BATTERY CHARGER.™

## MULTI-VOLTAGE

**6V, 12V, & 24V.**  
6-volt (50-amps), 12-volt (50-amps), and 24-volt (25-amps) - for lead-acid automotive, marine, and deep-cycle batteries, including flooded, gel, AGM, and maintenance-free, plus lithium-ion.

## 0.0V

**FORCE MODE.**  
For extremely dead batteries lower than 1-volt, manually turn on force mode to detect and charge batteries all the way down to zero volts.

## 24/7

**ZERO OVERCHARGE.**  
Safely charge any battery year-round. Charge continuously without user intervention and with zero risk of overcharging your battery.

## -40°C

**ULTRA-FLEXIBLE CABLING.**  
Featuring ultra-flexible silicone cabling - down to -40°C - with protective nylon braided shielding for maximum protection against abrasion.



**NOCO**

30339 Diamond Parkway, #102  
Glenwillow, OH 44139 | USA  
1.800.456.6626

no.co

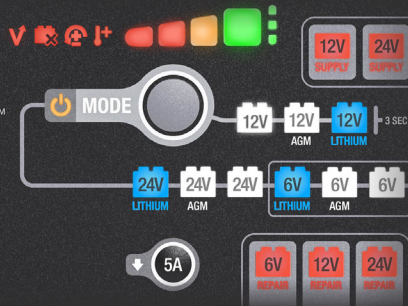
LEAD ACID

WET GEL MF EFB AGM LI-ION

AUTO | MARINE | RV | POWERSPORT | LAWN & GARDEN



# NOCO genius PRO 25™



## CHARGING MODES

### LEAD-ACID

Used for 6V, 12V, & 24V wet cell, gel, enhanced flooded, maintenance-free, & calcium batteries.



### AGM

Used for 6V, 12V, & 24V AGM or maintenance-free batteries.



### LITHIUM

Used for 6V, 12V, 24V lithium-ion batteries (including lithium iron phosphate). Only for batteries with Battery Management Systems (BMS).



### REPAIR

Used to repair old, idle, damaged, stratified, or sulfated batteries.



### SUPPLY

Converts to a DC power supply for 12V or 24V DC devices, or as a memory retainer when replacing a battery.



### FORCE

Used to charge batteries below 1V. All charge mode LED's will flash and the selected mode will illuminate.

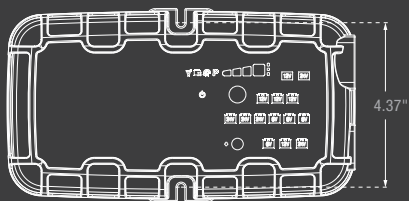


### 5A MODE

Allows the unit to operate at a lower charge current for smaller batteries or maintenance.



## WHAT'S IN THE BOX



9.3" x 5.1" x 3.0" (23.6 x 13 x 7.6 cm)

\*Accessories not to scale with GENIUSPRO25



EVA CASE



(1) GENIUSPRO Clamps w/ Interchangeable Connectors

(2) Self Tapping Screws



User Guide

30 ANL FUSE

5.4 FT 1.6 M

10 FT 3M

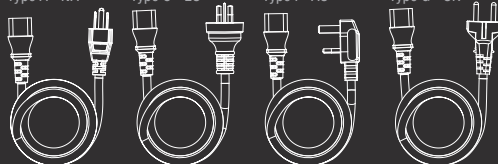
8AWG

Type A - NA

Type C - EU

Type I - AU

Type G - UK



6 FT 1.8 M



## THERMAL COMPENSATION.

The new integrated thermal sensor automatically monitors and adjusts the charging cycle based on fluctuations of ambient temperature. Avoids under-charging in cold weather down to -4°F and avoids over-charging in hot weather up to 122°F.

## CHARGING TIMES (based on 6V/12V modes)

Battery Size	Charging Time
25Ah	0.75hr
50Ah	1.5hr
100Ah	3hr
200Ah	6hr
500Ah	15hr

\*Approximate charging times at 50% depth of discharge.

## TECHNICAL SPECIFICATIONS

CHARGING CURRENT:	25A (6V, 12V), 12.5A (24V) DC
TYPES OF BATTERIES:	6V, 12V, 24V
OUTPUT POWER:	375W
CHARGING VOLTAGE:	Various
WEIGHT:	2.7 lbs (1.22kg)
INPUT/ WORKING VOLTAGE AC:	100-240 VAC, 50-60Hz
LOW-VOLTAGE DETECTION:	1V (6V, 12V, 24V)
BACK CURRENT DRAIN:	<0.5mA
AMBIENT TEMPERATURE:	-4°F to +122°F (-20°C to +50°C)
HOUSING PROTECTION:	IP20
COOLING:	Forced Air
VOLUMETRICS:	<b>Retail Packaging:</b> Dimensions: 15.75" x 10.03" x 8.74" Weight: 11.06lbs UPC: 0-46221-19051-9
	<b>Master Carton:</b> Dimensions: 20.94" x 16.61" x 9.61" Weight: 25.88lbs Quantity: 2 UPC: 10046221190516
	<b>Inner Carton:</b> Dimensions: 14.65" x 8.74" x 6.85" Weight: 7.98lbs
	<b>Units Per Pallet:</b> 48 Units

NOCO

30339 Diamond Parkway, #102  
Glenwillow, OH 44139 | USA  
1.800.456.6626

no.co

