



RB48V25

Voltage: 51.2V | Capacity: 25 Ah | Energy: 1280 Wh | Group: 24

LITHIUM IRON PHOSPHATE BATTERY **LiFePO4**

ELECTRICAL SPECIFICATIONS

| | |
|---------------------------|------------------|
| Nominal Voltage | 51.2 V |
| Nominal Capacity | 25 Ah |
| Capacity @ 25A | 300 min |
| Resistance | ≤70 mΩ @ 50% SOC |
| Efficiency | 99% |
| Self Discharge | <3% per Month |
| Maximum Modules in Series | 1 (Single Use) |

DISCHARGE SPECIFICATIONS

| | |
|--------------------------------------|----------------------------------|
| Maximum Continuous Discharge Current | 20 A |
| Peak Discharge Current | 25 A (4 ±1 s) |
| BMS Discharge Current Cut-Off | 60 A ±10 A (6 ±3 ms) |
| Recommended Low Voltage Disconnect | 44 V |
| BMS Discharge Voltage Cut-Off | 40 V (2.5 ±0.1 vpc) (100 ±50 ms) |
| Reconnect Voltage | 32 V (2.0 ±0.1 vpc) |
| Short Circuit Protection | 400-600 μs |

TEMPERATURE SPECIFICATIONS

| | |
|------------------------------|-----------------------------|
| Discharge Temperature | -4 to 140° F (-20 to 60° C) |
| Charge Temperature* | -4 to 113° F (-20 to 45° C) |
| Storage Temperature | 23 to 95° F (-5 to 35° C) |
| BMS High Temperature Cut-Off | 149° F (65° C) |
| Reconnect Temperature | 122° F (50° C) |

*Refer to charge currents below 32°F (0°C)

MECHANICAL SPECIFICATIONS

| | |
|------------------------|---|
| Dimensions (L x W x H) | 10.2 x 6.6 x 8.6" 260 x 168 x 218 mm |
| Weight | 27.6 lbs (12.5 kg) |
| Terminal Type | M8 x 1.25 |
| Terminal Torque | 80 - 100 in-lbs (9 - 11 N-m) |
| Case Material | ABS |
| Enclosure Protection | IP66 |
| Cell Type - Chemistry | Cylindrical - LiFePO4 |

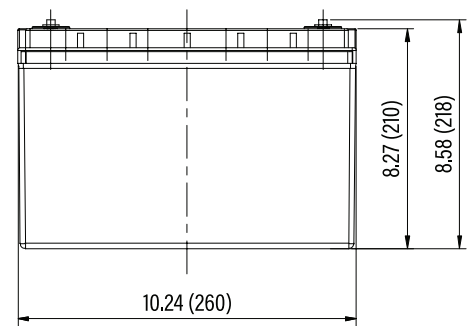
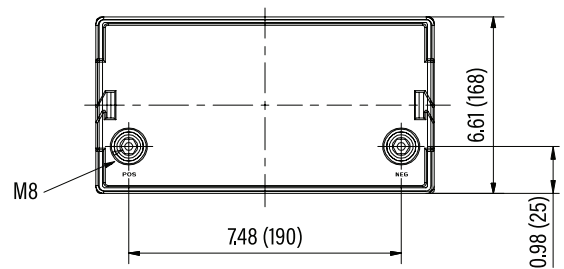
CHARGE SPECIFICATIONS

| | |
|--|--|
| Recommended Charge Current | 1.25 A - 12.5 A |
| Recommended Maximum Charge Current | 20 A |
| Charge Current 14 to 32°F (-10 to 0°C) | ≤0.1 C |
| Charge Current -4 to 14°F (-20 to -10°C) | ≤0.05 C |
| Recommended Charge Voltage | 56.0 V - 58.4 V |
| BMS Charge Voltage Cut-Off | 60.8 V (3.8 ±0.05 vpc) (1.0 ±0.5 s) |
| Reconnect Voltage | 57.6 V (3.6 ±0.05 vpc) |
| Balancing Voltage | 57.6 V (3.6 ±0.025 vpc) |

COMPLIANCE SPECIFICATIONS

| | |
|-------------------------|---|
| Certifications | CE (battery) UL1642 & IEC62133 (cells) |
| Shipping Classification | UN 3480, CLASS 9 |

DIMENSIONAL SPECIFICATIONS





RB48V25

Voltage: 51.2V | Capacity: 25 Ah | Energy: 1280 Wh | Group: 24

LITHIUM IRON PHOSPHATE BATTERY **LiFePO4**

PERFORMANCE CHARACTERISTICS

