

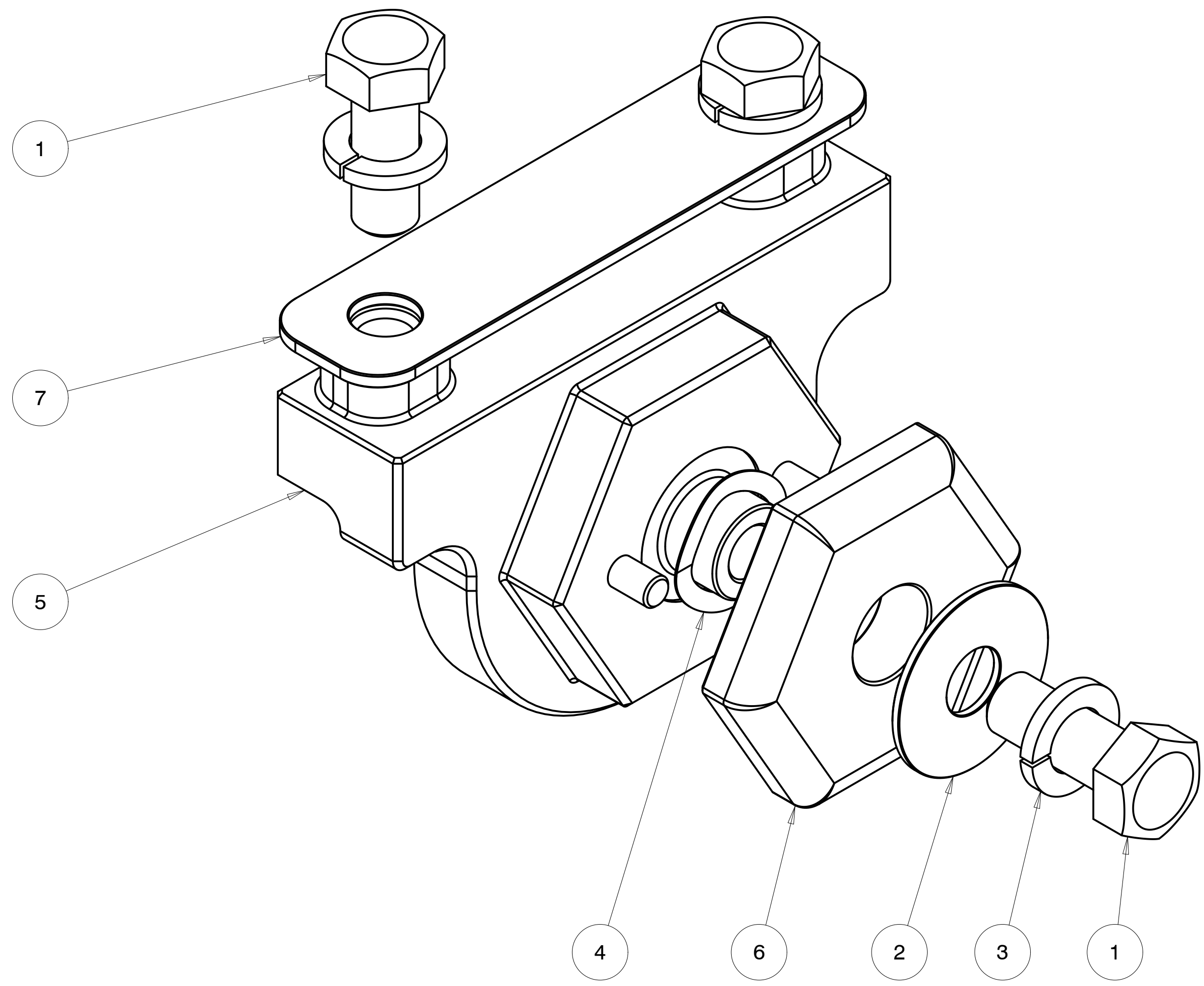
4

3

2

1

REVISIONS				
ZONE	REV	DESCRIPTION	DATE	APPROVED
--	1	INITIAL RELEASE	2022-FEB-2	MZ



ITEM NO.	QTY REQD.	PART NO.	DRAWING TITLE OR DESCRIPTION	MANUFACTURER	MFG PART NO.
7	1	500-001-1031	TOP PLATE, LIFTING HEX, HT	FAB	---
6	1	500-001-1029	KEEPER, LIFTING HEX, HT	FAB	---
5	1	500-001-1028	LIFTING HEX, HT	FAB	---
4	1	90-313-780-1004-071-20	WAVE WASHER, 1.004 OD X .80 ID X .07 HT X .015THK	MCMaster	9714K111
3	3	90-310-510-870-120-20	WASHER, SPLIT LOCK .510 ID X .87 X .120TK, SST	MCMaster	92146A033
2	1	90-300-531-1500-070-20	WASHER, .531 X 1.50 OD X .070 THICK, SST	MCMaster	90313A117
1	3	90-104-500C-1250-20	HEX BOLT, 1/2-13 X 1.250 SST 18-8	MCMaster	92240A714

UNLESS OTHERWISE SPECIFIED DIMENSIONS ARE IN INCHES. TOLERANCES ARE: .X +/- 0.1 .XX +/- 0.01 .XXX +/- 0.001 ANGLES +/- 0.5 INTERPRET DIMENSIONS PER ASME Y14.5M 1994 (R2004)	CREO REPORTED PARAMETERS	DESIGNER G STAPLES	
	CREO MATERIAL	ENGINEER G STAPLES	2022-MMM-DD
	CREO MASS 1.909	DRAFTER M ZASSO	2022-MMM-DD
	CREO VOLUME 16.991	CHECKED ---	2022-MMM-DD
CREO DRAWING FILE NAME: 560-001-9028	DO NOT SCALE DRAWING		

UNIVERSAL SONAR MOUNT		
ASSEMBLY, LIFT NUT, MT		
SIZE	CUSTOMER DRAWING/PART NO.	REV
<b>C</b>	---	1
	560-001-9028	
SCALE	1.500	SHEET 1 OF 2

4

3

2

1

D

D

C

C

B

B

A

A

CUSTOMER DRAWING/PART NO.

---

DRAWING/PART NO.

560-001-9028

REV

1

SHT

1