

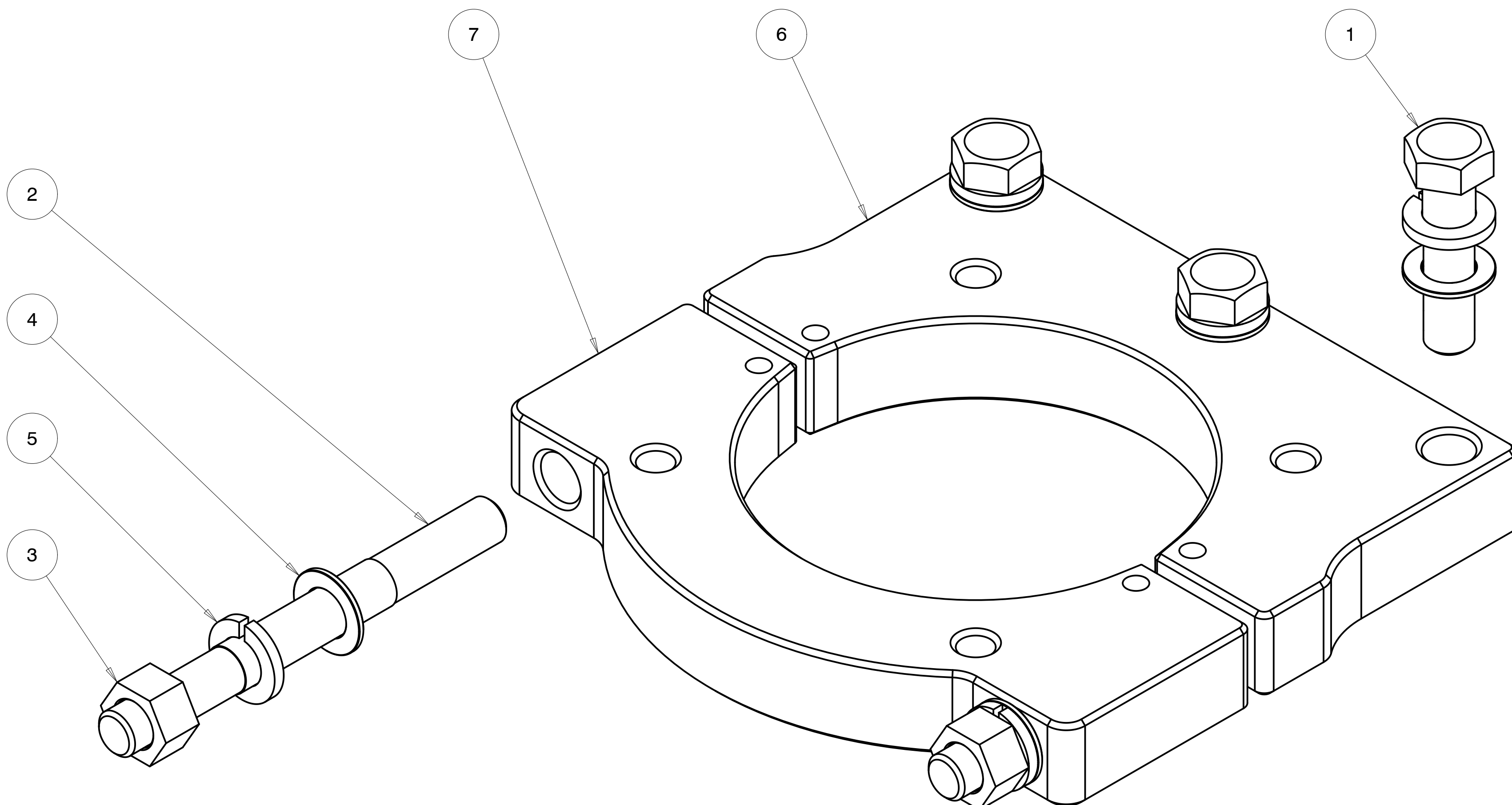
4

3

2

1

REVISIONS				
ZONE	REV	DESCRIPTION	DATE	APPROVED
--	1	INITIAL RELEASE	2022-JUL-19	MZ



ITEM NO.	QTY REQD.	PART NO.	DRAWING TITLE OR DESCRIPTION	MANUFACTURER	MFG PART NO.
7	1	500-1435-02-45	Z-CLAMP, 2-PIECE, CAP, 4.5"	FAB	---
6	1	500-1435-01-45	Z-CLAMP, 2-PIECE, BASE, 4.5"	FAB	---
5	5	90-310-510-870-120-20	WASHER, SPLIT LOCK .510 ID X .87 X .120TK, SST	MCMaster	92146A033
4	5	90-300-515-875-060-20	WASHER, .515 ID X .875 OD X .060 18-8	MCMaster	98017A210
3	2	90-200-500C-20	NUT, 1/2-13 UNC, 18-8	MCMaster	91845A310
2	2	90-140-500C-5000-1500-20	STUD, 1/2-13, 5" OAL, 1.5 THREAD, 18-8	MCMaster	98962A535
1	3	90-104-500C-2000-20	HEX BOLT, 1/2-13 X 2.000 SST 18-8	MCMaster	92198A720

TOLERANCES ARE:	CREO REPORTED PARAMETERS	DESIGNER	
		ENGINEER	DATE
.X +/- 0.1	CREO MATERIAL	M ZASSO	2022-JUL-19
.XX +/- 0.01	CREO MASS	M ZASSO	2022-JUL-19
.XXX +/- 0.001	CREO VOLUME	CHECKED	---
ANGLES +/- 0.5	CREO DRAWING FILE NAME:		2022-MMM-DD
INTERPRET DIMENSIONS PER ASME Y14.5M 1994 (R2004)	540-R45-9435	DO NOT SCALE DRAWING	

UNIVERSAL SONAR MOUNT		
ASSEMBLY, Z-CLAMP, 2 PIECE, 4.5"		
SIZE	CUSTOMER DRAWING/PART NO.	REV
C	---	1
DRAWING/PART NO.		
540-R45-9435		
SCALE	1.250	SHEET 1 OF 2

4

3

2

1

D

D

C

B

A

A

CUSTOMER DRAWING/PART NO. ---  
 DRAWING/PART NO. 540-R45-9435  
 REV 1  
 SHT 1

4

3

2

1

REVISIONS  
SEE SHEET 1

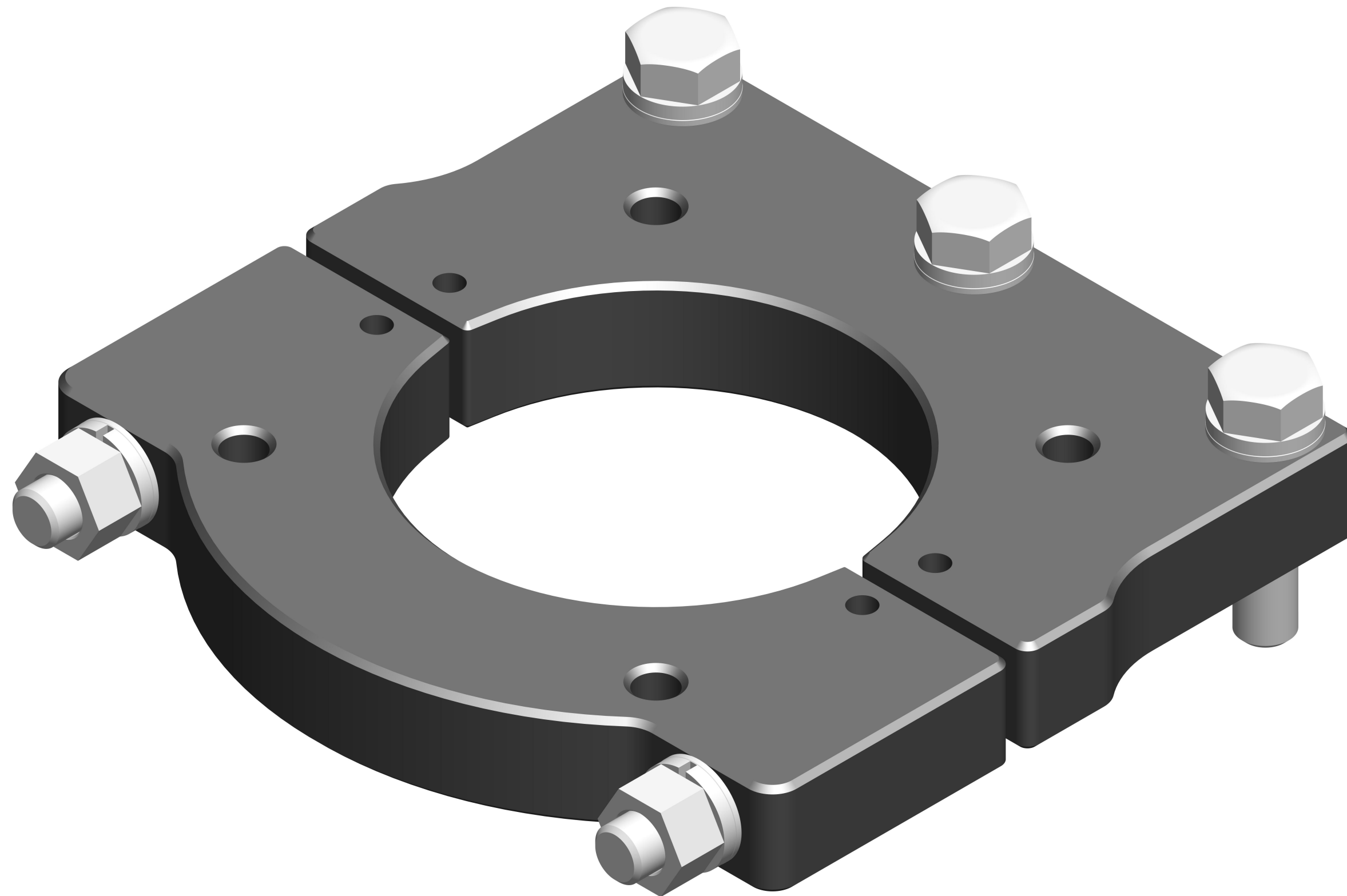
D

D

C

B

A



CUSTOMER DRAWING/PART NO.

---

DRAWING/PART NO.

540-R45-9435

REV

1

SHT

2

UNIVERSAL SONAR MOUNT		
ASSEMBLY, Z-CLAMP, 2 PIECE, 4.5"		
SIZE	CUSTOMER DRAWING/PART NO.	REV
<b>C</b>	---	1
	DRAWING/PART NO. 540-R45-9435	
SCALE	1.250	SHEET 2 OF 2

4

3

2

1

A