

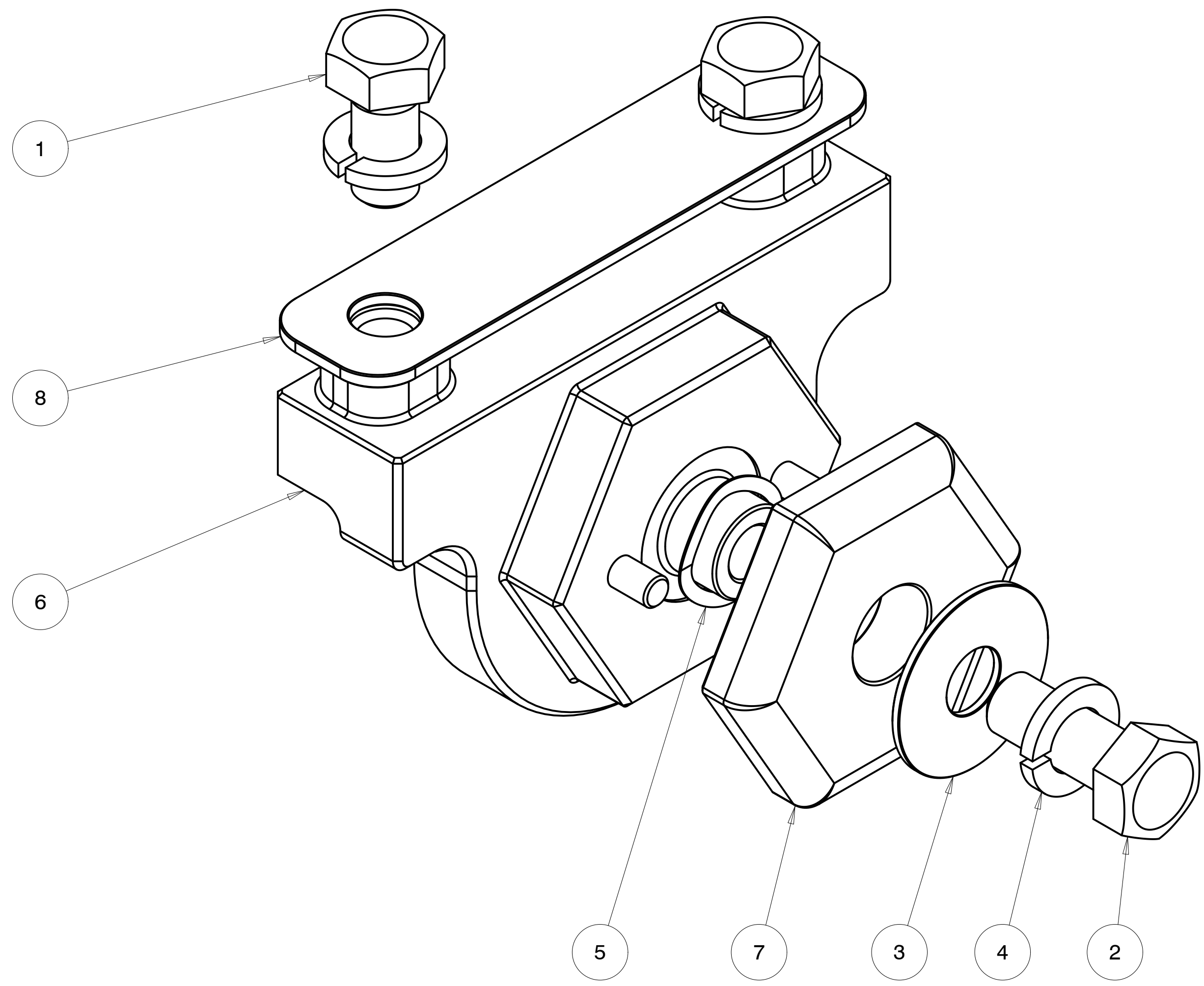
4

3

2

1

REVISIONS				
ZONE	REV	DESCRIPTION	DATE	APPROVED
--	1	INITIAL RELEASE	2022-FEB-2	MZ



ITEM NO.	QTY REQD.	PART NO.	DRAWING TITLE OR DESCRIPTION	MANUFACTURER	MFG PART NO.
8	1	500-001-1031	TOP PLATE, LIFTING HEX, HT	FAB	---
7	1	500-001-1029	KEEPER, LIFTING HEX, HT	FAB	---
6	1	500-001-1028	LIFTING HEX, HT	FAB	---
5	1	90-313-780-1004-071-20	WAVE WASHER, 1.004 OD X .80 ID X .07 HT X .015 THICK, SST	MCMaster	9714K111
4	3	90-310-510-870-120-20	WASHER, SPLIT LOCK .510 ID X .87 X .120TK, SST	MCMaster	92146A033
3	1	90-300-531-1500-070-20	WASHER, .531 X 1.50 OD X .070 THICK, SST	MCMaster	90313A117
2	1	90-104-500C-1250-20	HEX BOLT, 1/2-13 X 1.250 SST 18-8	MCMaster	92240A714
1	2	90-104-500C-1000-20	HEX BOLT, 1/2-13 X 1.00 SST 18-8	MCMaster	92240A712

UNLESS OTHERWISE SPECIFIED DIMENSIONS ARE IN INCHES. TOLERANCES ARE: .X +/- 0.1 .XX +/- 0.01 .XXX +/- 0.001 ANGLES +/- 0.5 INTERPRET DIMENSIONS PER ASME Y14.5M 1994 (R2004)	CREO REPORTED PARAMETERS		DESIGNER G STAPLES	
	CREO MATERIAL	CREO MASS 1.885	ENGINEER G STAPLES	2022-MMM-DD
	CREO VOLUME 16.903	CREO DRAWING FILE NAME: 540-001-9028	DRAFTER M ZASSO	2022-MMM-DD
	DO NOT SCALE DRAWING		CHECKED ---	2022-MMM-DD

UNIVERSAL SONAR MOUNT		
ASSEMBLY, LIFT NUT, HT		
SIZE	CUSTOMER DRAWING/PART NO. ---	REV 1
DRAWING/PART NO. 540-001-9028		
SCALE	1.500	SHEET 1 OF 2

4

3

2

1

CUSTOMER DRAWING/PART NO.

DRAWING/PART NO.

540-001-9028

REV

1

SHT

1

A

4

3

2

1

REVISIONS  
SEE SHEET 1

D

CUSTOMER DRAWING/PART NO.

---

DRAWING/PART NO.

540-001-9028

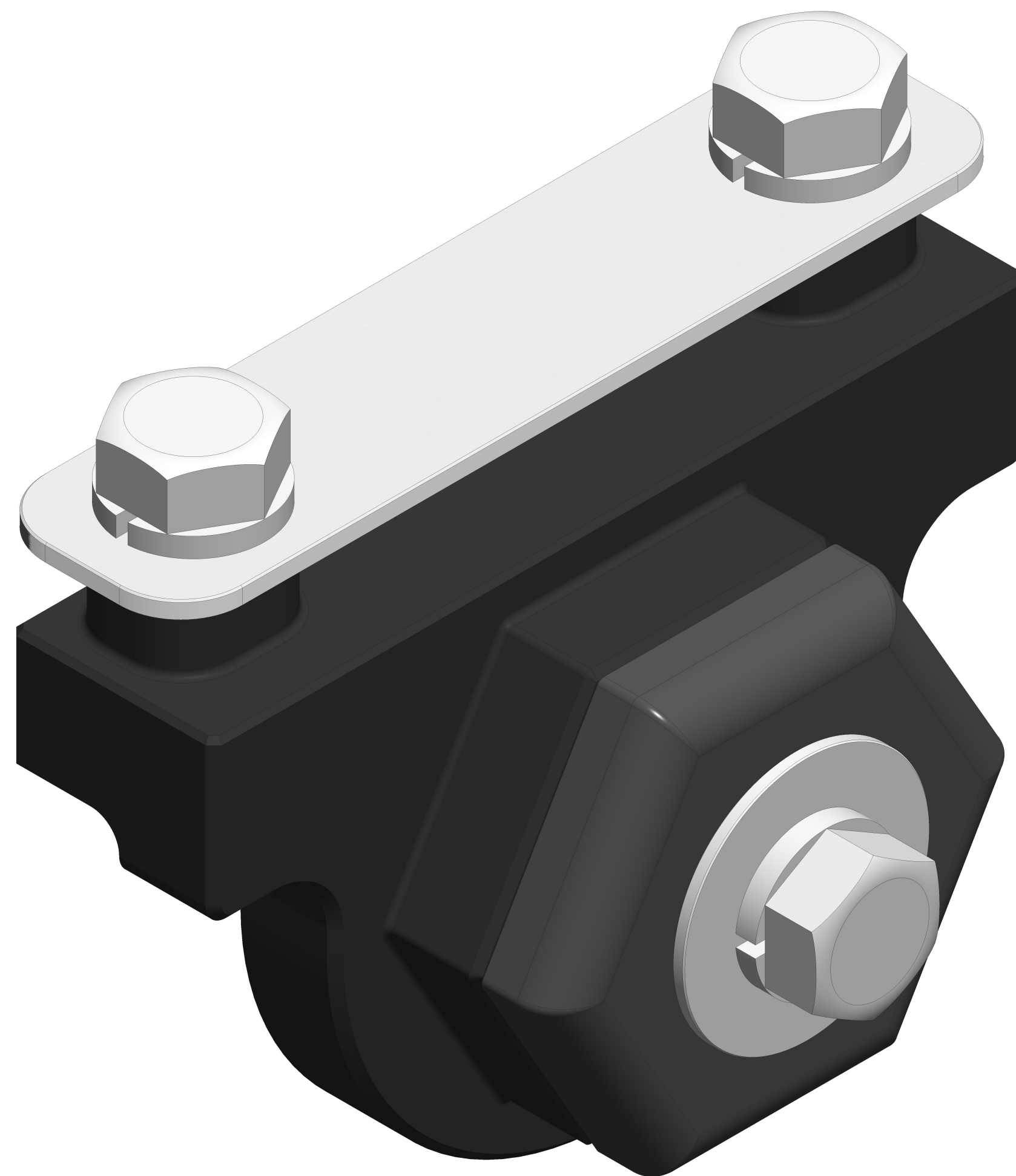
REV

1

SHT

2

A



UNIVERSAL SONAR MOUNT		
ASSEMBLY, LIFT NUT, HT		
SIZE	CUSTOMER DRAWING/PART NO.	REV
<b>C</b>	---	1
	DRAWING/PART NO. 540-001-9028	
SCALE	2.000	SHEET 2 OF 2

4

3

2

1

D

CUSTOMER DRAWING/PART NO.

---

DRAWING/PART NO.

540-001-9028

REV

1

SHT

2

A

D

CUSTOMER DRAWING/PART NO.

---

DRAWING/PART NO.

540-001-9028

REV

1

SHT

2

A