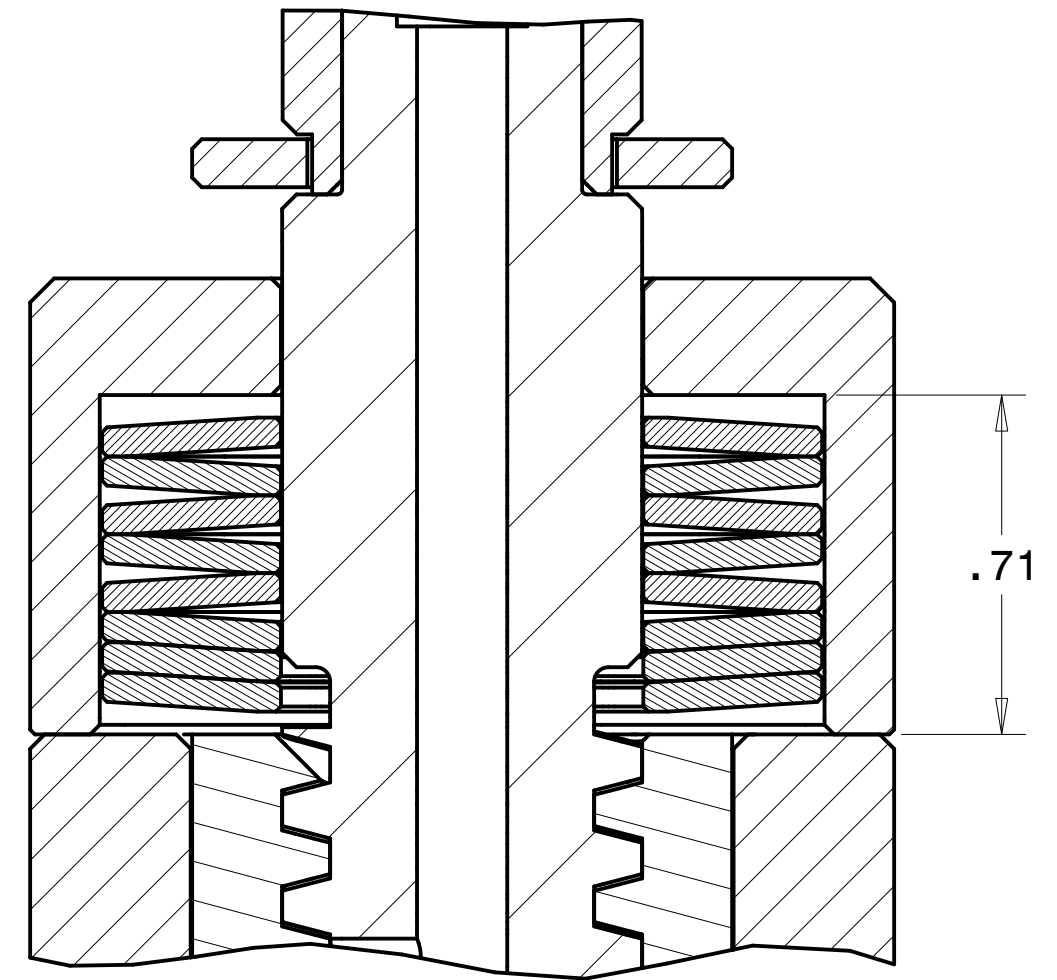
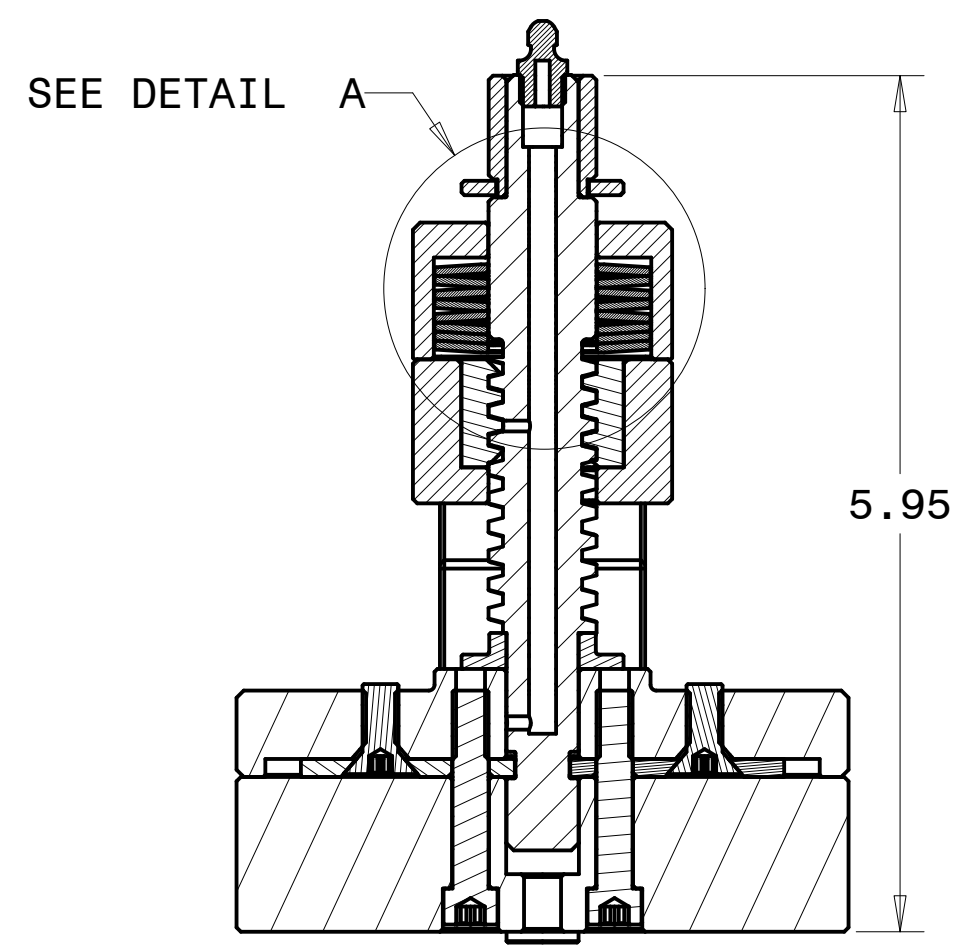
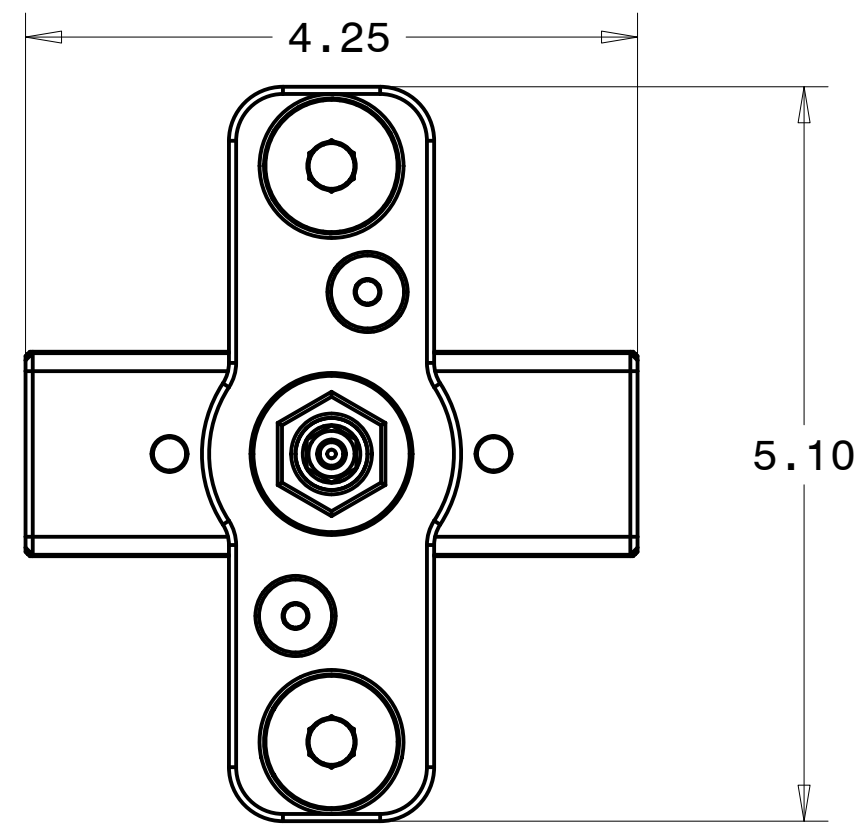
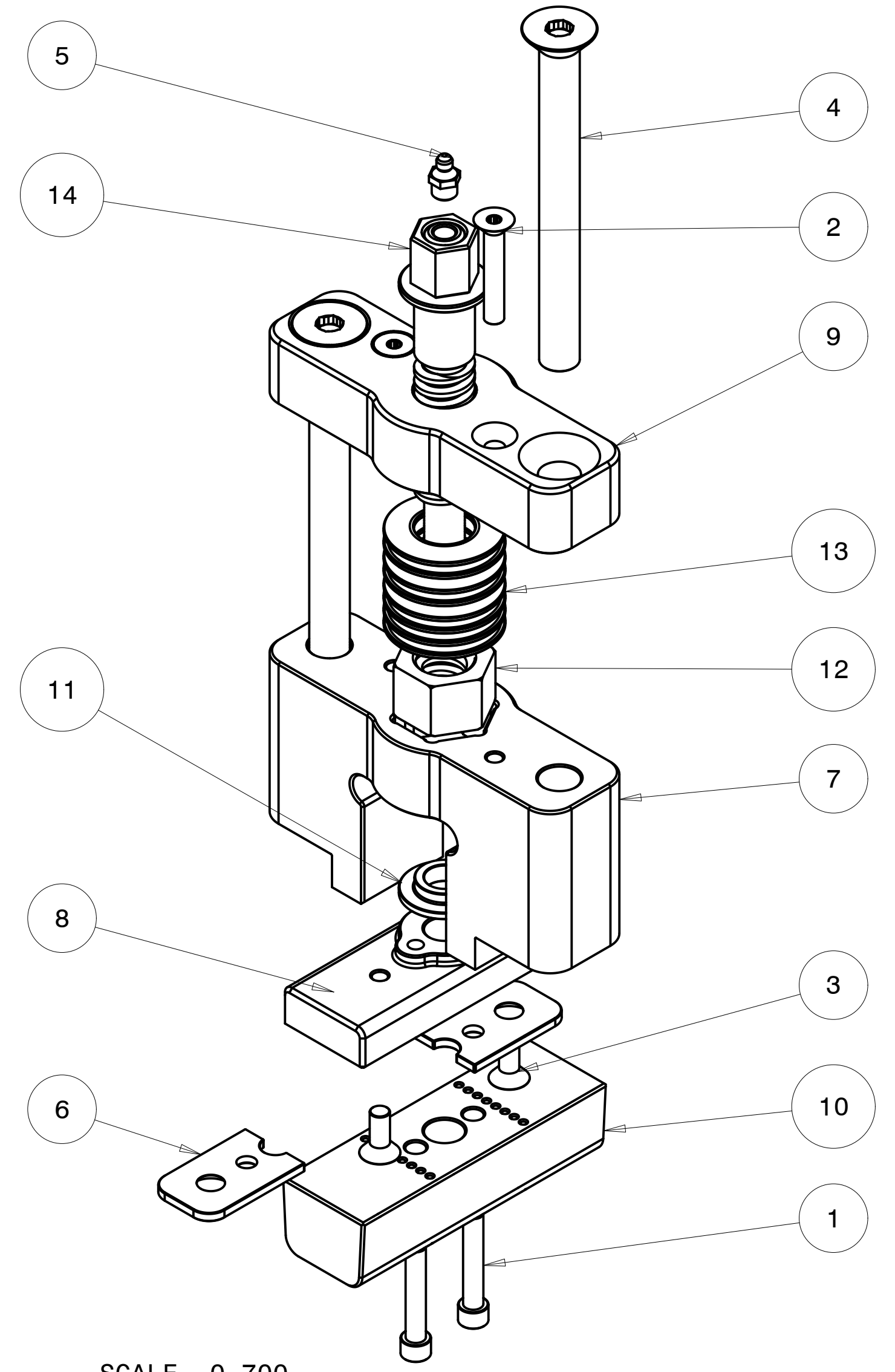


REVISIONS				
ZONE	REV	DESCRIPTION	DATE	APPROVED
--	1	INITIAL RELEASE	02022-JAN-19	MZ
	2	ADDED 8TH BV WASHER, ORIENTATION	02022-NOV-11	MZ



DETAIL A
SCALE 2.500

NOTE: BELLEVILLE WASHER ORIENTATION



SCALE 0.700

ITEM NO.	QTY REQD.	PART NO.	DRAWING TITLE OR DESCRIPTION	MANUFACTURER	MFG PART NO.
14	1	540-001-9011	ASSEMBLY, LEAD SCREW, HT	ASSY	---
13	8	500-001-BV-750-450LBS	BELLEVILLE SPRING WASHER, 750 ID X 450LBS	MCMASTER	9713K99
12	1	500-001-1026	ACME NUT, 3/4-5, BRASS, HT	FAB	---
11	1	500-001-1017	THRUST BUSHING, HT	FAB	---
10	1	500-001-1014	SHEAR BLOCK, HT-MT	FAB	---
9	1	500-001-1013	TOWER NUT RETAINER, HT	FAB	---
8	1	500-001-1012	SHEAR BLOCK BACKING PLATE, HT	FAB	---
7	1	500-001-1010	TOWER BLOCK, HT	FAB	---
6	2	500-001-1009	RETAINER, SHEAR BLOCK, HT	FAB	---
5	1	94-350-313F-344-01-23	GREASE FITTING, 5/16-24-UNF STRAIGHT 303 SST	MCMASTER	1293K44
4	2	90-110-500C-5000-20	SCREW, 1/2-13 UNC X 5.0 FHC 18-8	MCMASTER	92210A732
3	2	90-110-250C-625-20	SCREW, 1/4-20 X .625 FHC 18-8	MCMASTER	92210A539
2	2	90-110-250C-1500-20	SCREW, 1/4-20 X 1.50 FHC 18-8	MMC	92210A546
1	2	90-100-250C-1375-20	SCREW, 1/4-20 X 1.375 SHC 18-8	MCMASTER	92196A545

UNLESS OTHERWISE SPECIFIED DIMENSIONS ARE IN INCHES.	PRO/E REPORTED PARAMETERS		DESIGNER	
	PRO/E MATERIAL	PRO/E MASS	ENGINEER	DRAFTER
TOLERANCES ARE:	N/A	4.569	G STAPLES	G STAPLES
.X +/- 0.1				02019-AUG-15
.XX +/- 0.01			M ZASSO	02022-NOV-11
.XXX +/- 0.001				
ANGLES +/- 0.5				02019-AUG-15
INTERPRET DIMENSIONS PER ASME Y14.5M 1994 (R2004)	PRO/E DRAWING FILE NAME: 540-001-9010		DO NOT SCALE DRAWING	

UNIVERSAL SONAR MOUNT		
ASSEMBLY, SHEAR TOWER, HT		
SIZE	CUSTOMER DRAWING/PART NO.	REV
C	---	2
DRAWING/PART NO.		
540-001-9010		
SCALE	SHEET 1 OF 2	
0.750		

CUSTOMER DRAWING/PART NO. 540-001-9010 DRAWING/PART NO. 2 SH1