

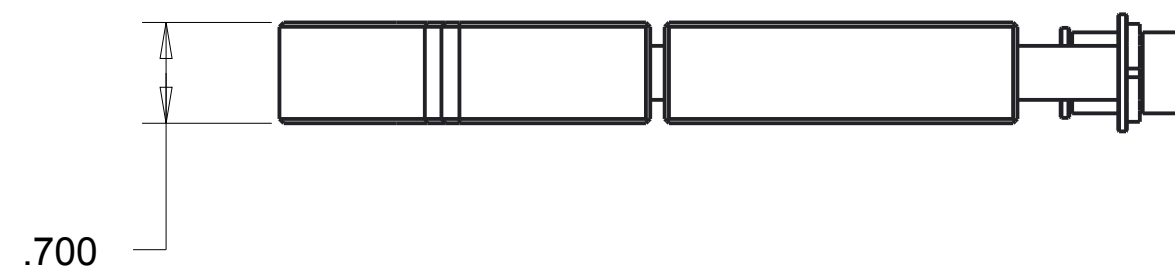
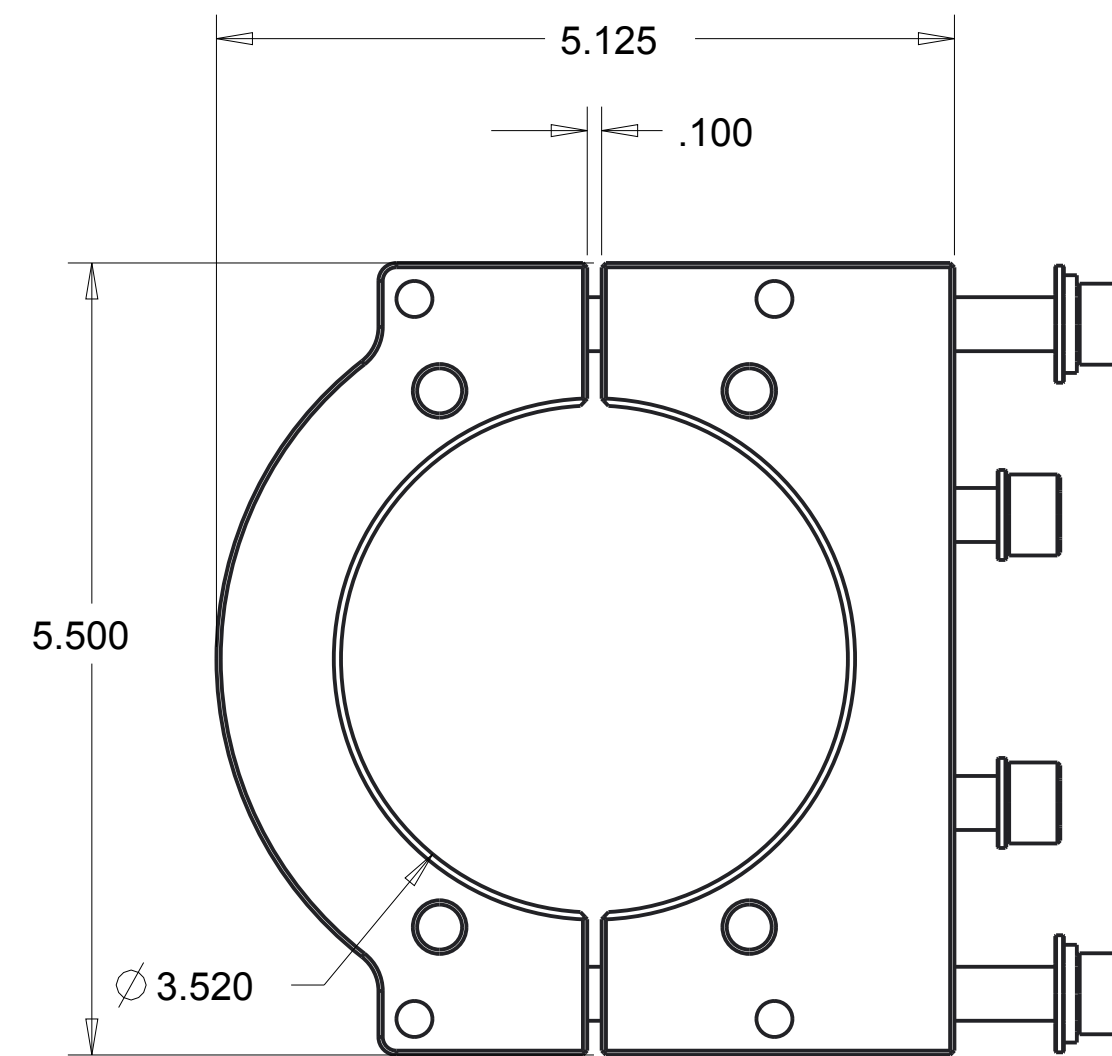
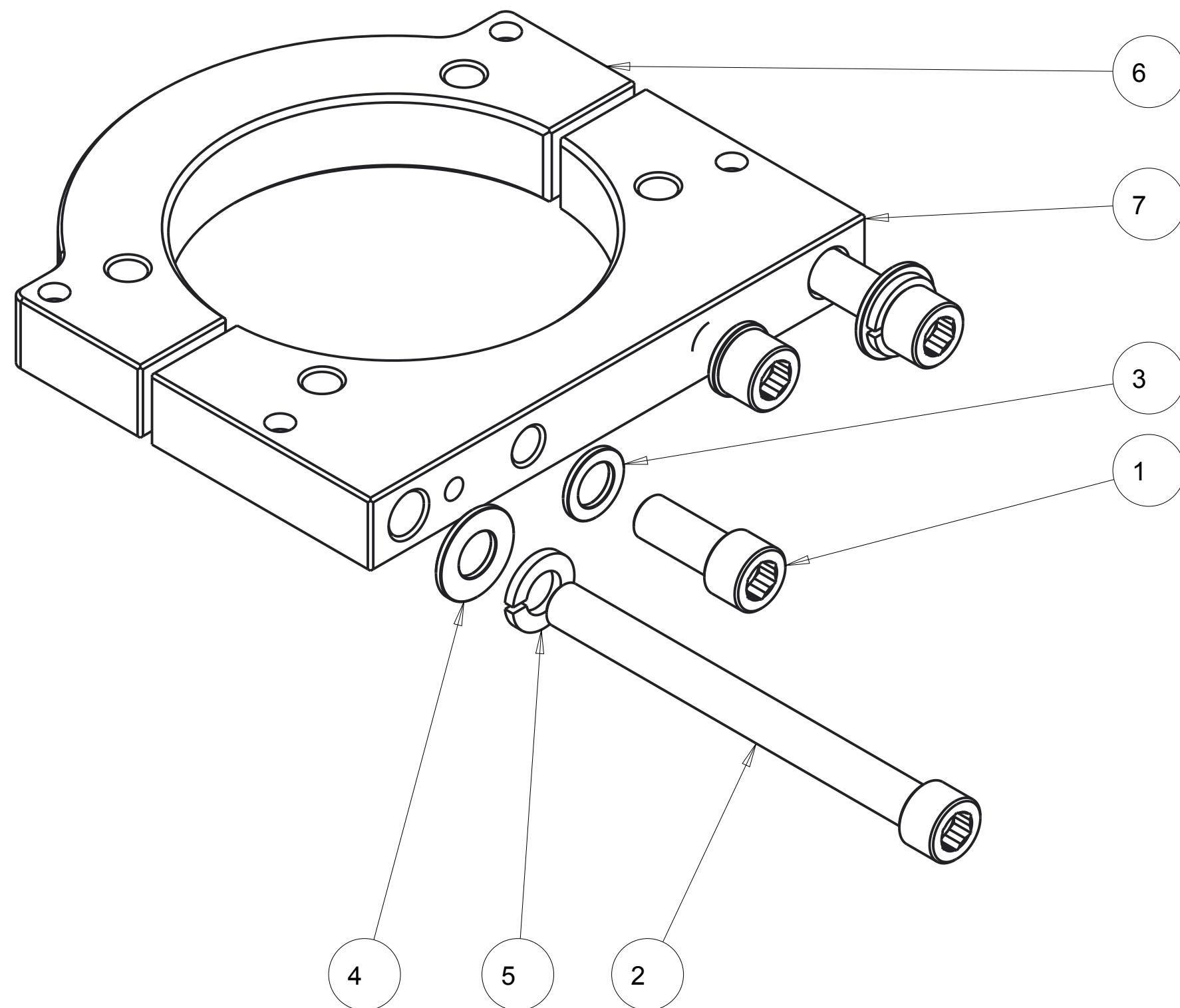
4

3

2

1

REVISIONS				
ZONE	REV	DESCRIPTION	DATE	APPROVED
--	1	INITIAL RELEASE	02016-OCT-07	--
	2	7/8 SHC WAS 1 INCH	02016-OCT-14	



ITEM NO.	QTY REQD.	PART NO.	DRAWING TITLE OR DESCRIPTION	MANUFACTURER	MFG PART NO.
7	1	520-100-1034-02	Z-CLAMP, 3.5", BOTTOM	FAB	---
6	1	520-100-1034-01	Z-CLAMP, 3.5", TOP	FAB	---
5	2	90-310-380-680-090-20	WASHER, SPLIT LOCK .380 ID X 68 OD X .090TK, 18-8 SST	MCMaster	92146A031
4	2	90-300-406-813-060-21	WASHER, .406 X .813 X .060TK, 316	MCMaster	91950A031
3	2	90-300-390-625-060-20	WASHER, .390 X .625 OD X .060 THICK, SST	MCMaster	98017A200
2	2	90-100-375C-4000-20	*SCREW, 3/8-16 X 4.0 SHC SHC 18-8	MCMaster	92196A640
1	2	90-100-375-875-20	SCREW, 3/8-16 X .875 SHC 18-8	MCMaster	92196A623

UNLESS OTHERWISE SPECIFIED DIMENSIONS ARE IN INCHES.	PRO/E REPORTED PARAMETERS	DESIGNER	
		G STAPLES	
TOLERANCES ARE:	PRO/E MATERIAL	ENGINEER	02016-OCT-07
.X +/- 0.1	N/A	G STAPLES	02016-OCT-07
.XX +/- 0.01	PRO/E MASS	DRAFTER	02016-OCT-07
.XXX +/- 0.001	4.949	G STAPLES	02016-OCT-07
ANGLES +/- 0.5	PRO/E VOLUME	CHECKED	02016-OCT-07
	N/A	---	02016-OCT-07
INTERPRET DIMENSIONS PER ASME Y14.5M 1994 (R2004)	PRO/E DRAWING FILE NAME:	DO NOT SCALE DRAWING	
	520-100-9034		

UNIVERSAL SONAR MOUNT		
ASSY, 2 PIECE Z CLAMP, 3.5"		
SIZE	CUSTOMER DRAWING/PART NO.	REV
C	---	2
	DRAWING/PART NO.	
	520-100-9034	
SCALE	1.000	SHEET 2 OF

4

3

2

1

CUSTOMER DRAWING/PART NO. ---
 DRAWING/PART NO. 520-100-9034
 REV 2 SHT 1

4

3

2

1

REVISIONS
SEE SHEET 1

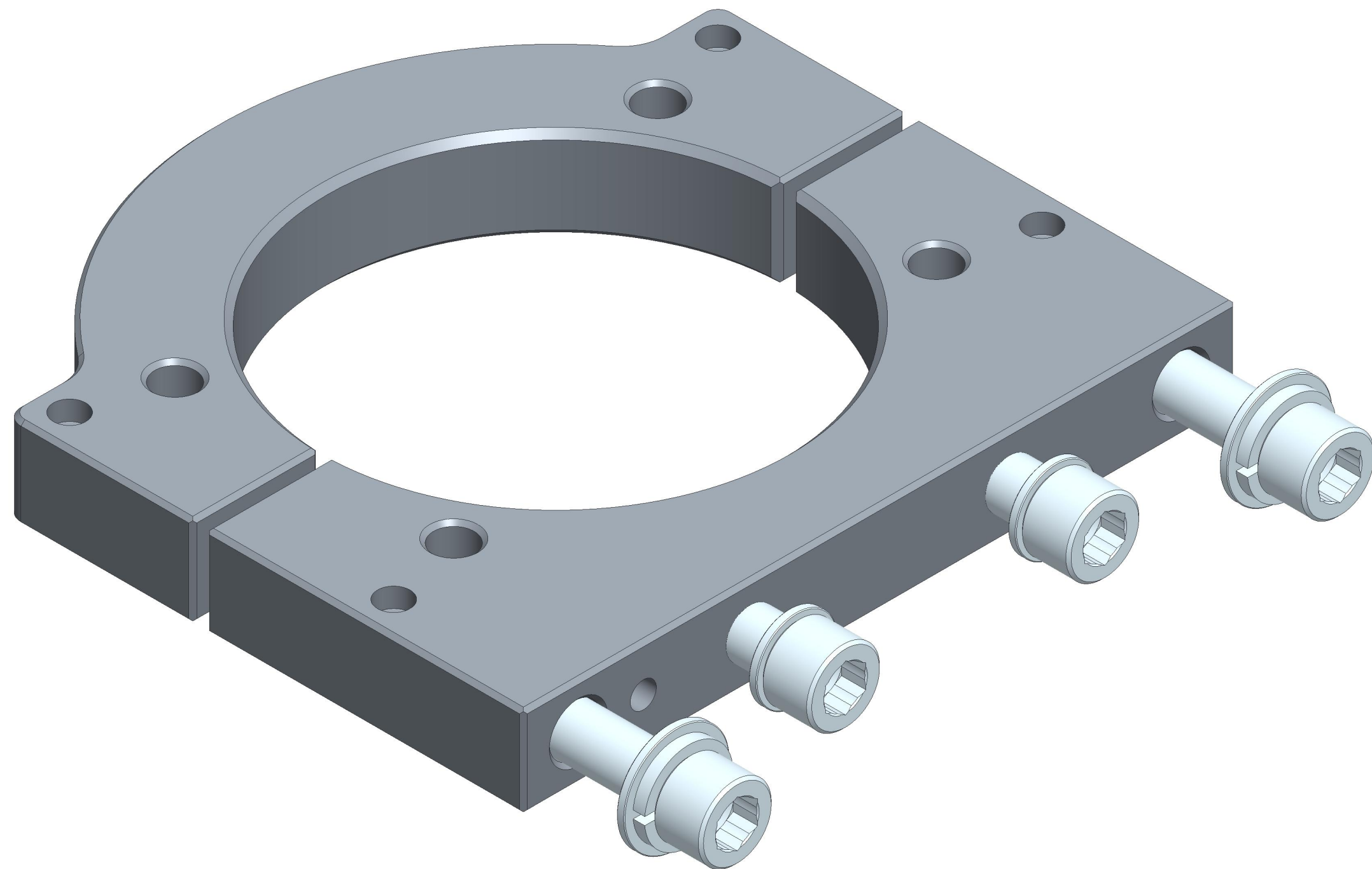
D

D

C

B

A



CUSTOMER DRAWING/PART NO.

DRAWING/PART NO.

520-100-9034

REV

2

SHT

2

UNIVERSAL SONAR MOUNT

ASSY, 2 PIECE Z CLAMP, 3.5"

SIZE	CUSTOMER DRAWING/PART NO.	REV
C	---	2
	DRAWING/PART NO. 520-100-9034	

SCALE 1.500 SHEET 2 OF 2

4

3

2

1

A