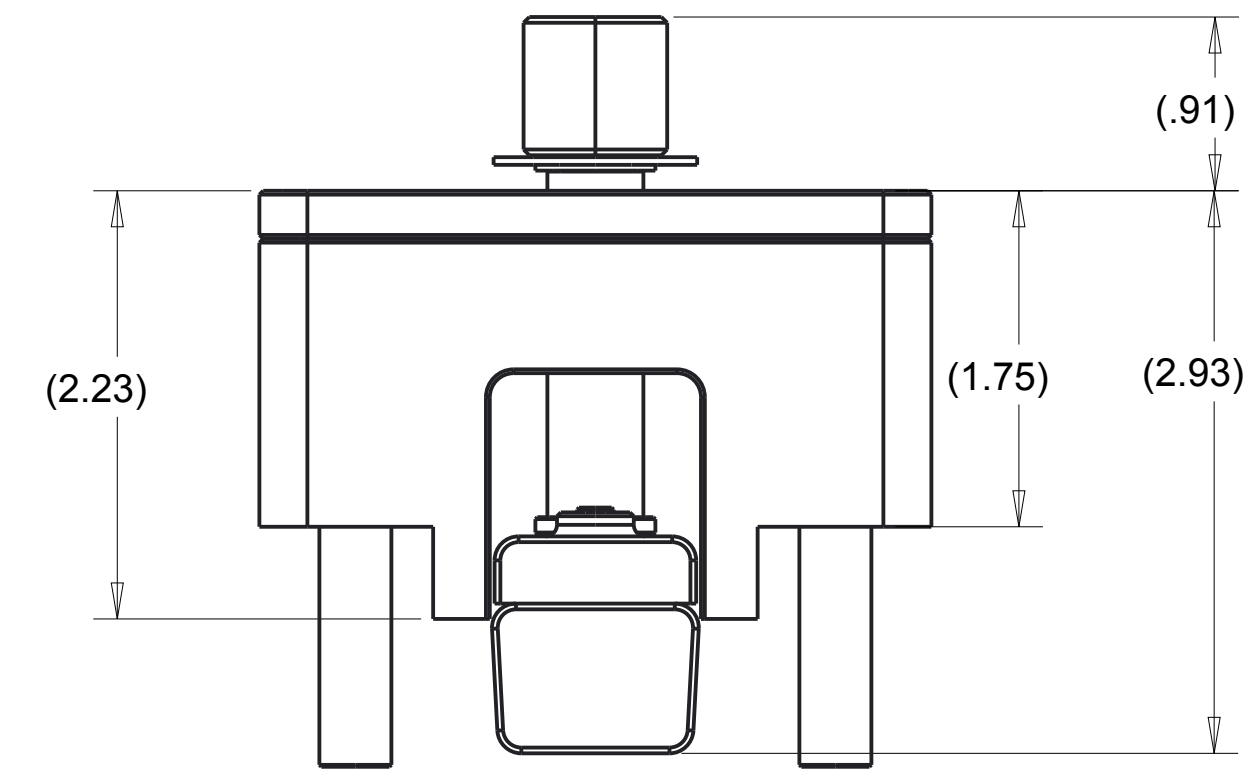
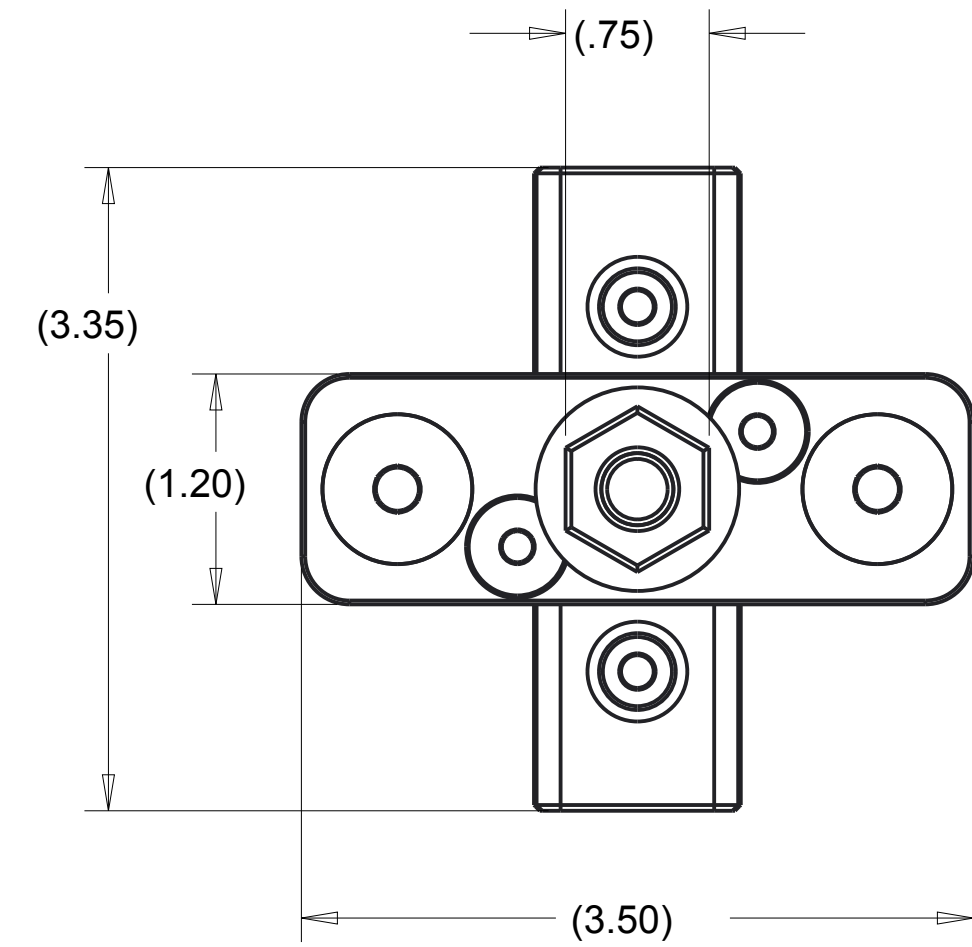
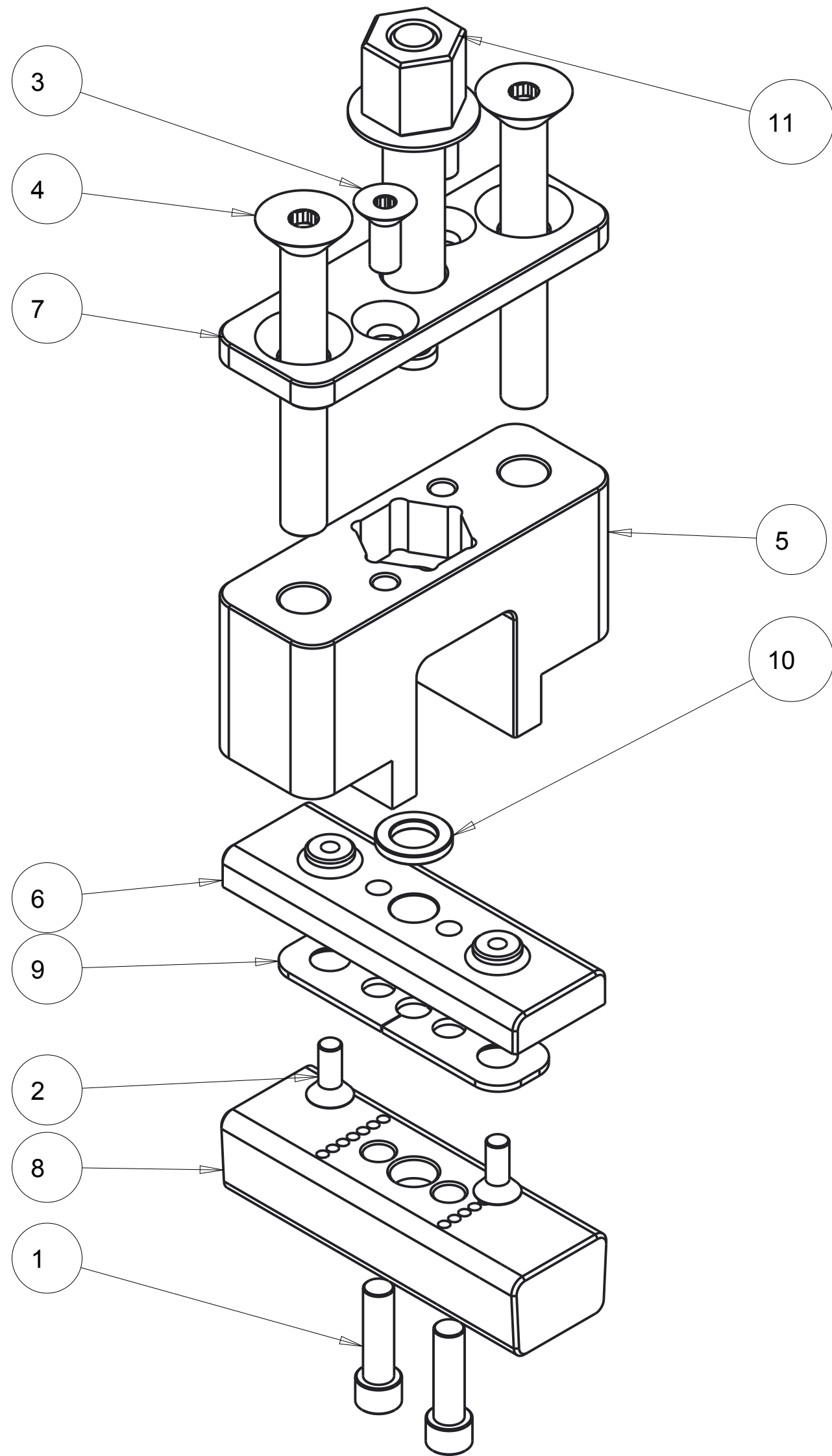


REVISIONS				
ZONE	REV	DESCRIPTION	DATE	APPROVED
--	1	INITIAL RELEASE	02016-OCT-06	--



ITEM NO.	QTY REQD.	PART NO.	DRAWING TITLE OR DESCRIPTION	MANUFACTURER	MFG PART NO.
11	1	520-100-9011	LEAD SCREW WITH DRIVE NUT	ASSY	---
10	1	520-100-1017	THRUST WASHER, TOWER	MCMMASTER	98126A785
9	2	520-100-1016	RETAINER, SHEAR BLOCK	FAB	---
8	1	520-100-1014	SHEAR BLOCK, COMPACT MOUNT	FAB	---
7	1	520-100-1013	CAP, SHEAR BLOCK TOWER	FAB	---
6	1	520-100-1012	BACKING PLATE, SHEAR BLOCK	FAB	---
5	1	520-100-1010	RISER, SHEAR BLOCK	FAB	---
4	2	90-110-375C-3000-20	SCREW, 3/8-16 UNC X 3.0 FHC 18-8	MCMMASTER	92210A636
3	2	90-110-250C-625-20	SCREW, 1/4-20 X .625 FHC 18-8	MCMMASTER	92210A539
2	2	90-110-1024-500	SCREW, #10-24 X .50 FHC 18-8	MCMMASTER	92210A242
1	2	90-100-250C-875-20	SCREW, 1/4-20 X .875 SHC 18-8	MCMMASTER	92196A541

UNLESS OTHERWISE SPECIFIED DIMENSIONS ARE IN INCHES. TOLERANCES ARE:	PRO/E REPORTED PARAMETERS		DESIGNER	
	.X +/- 0.1	PRO/E MATERIAL	G STAPLES	
.XX +/- 0.01	N/A	ENGINEER	G STAPLES	02016-OCT-06
.XXX +/- 0.001	PRO/E MASS	DRAFTER	G STAPLES	02016-OCT-06
ANGLES +/- 0.5	3.828	CHECKED	---	02016-OCT-06
INTERPRET DIMENSIONS PER ASME Y14.5M 1994 (R2004)	PRO/E VOLUME	N/A		PRO/E DRAWING FILE NAME:
	N/A			520-100-9010

UNIVERSAL SONAR MOUNT		
ASSY, SHEAR BLOCK TOWER		
SIZE	CUSTOMER DRAWING/PART NO.	REV
C	---	1
DRAWING/PART NO.		
520-100-9010		
SCALE	1.000	SHEET 2 OF

CUSTOMER DRAWING/PART NO.

DRAWING/PART NO.

520-100-9010

REV 1 SHT 1

A

4

3

2

1

REVISIONS
SEE SHEET 1

D

D

C

CUSTOMER DRAWING/PART NO.

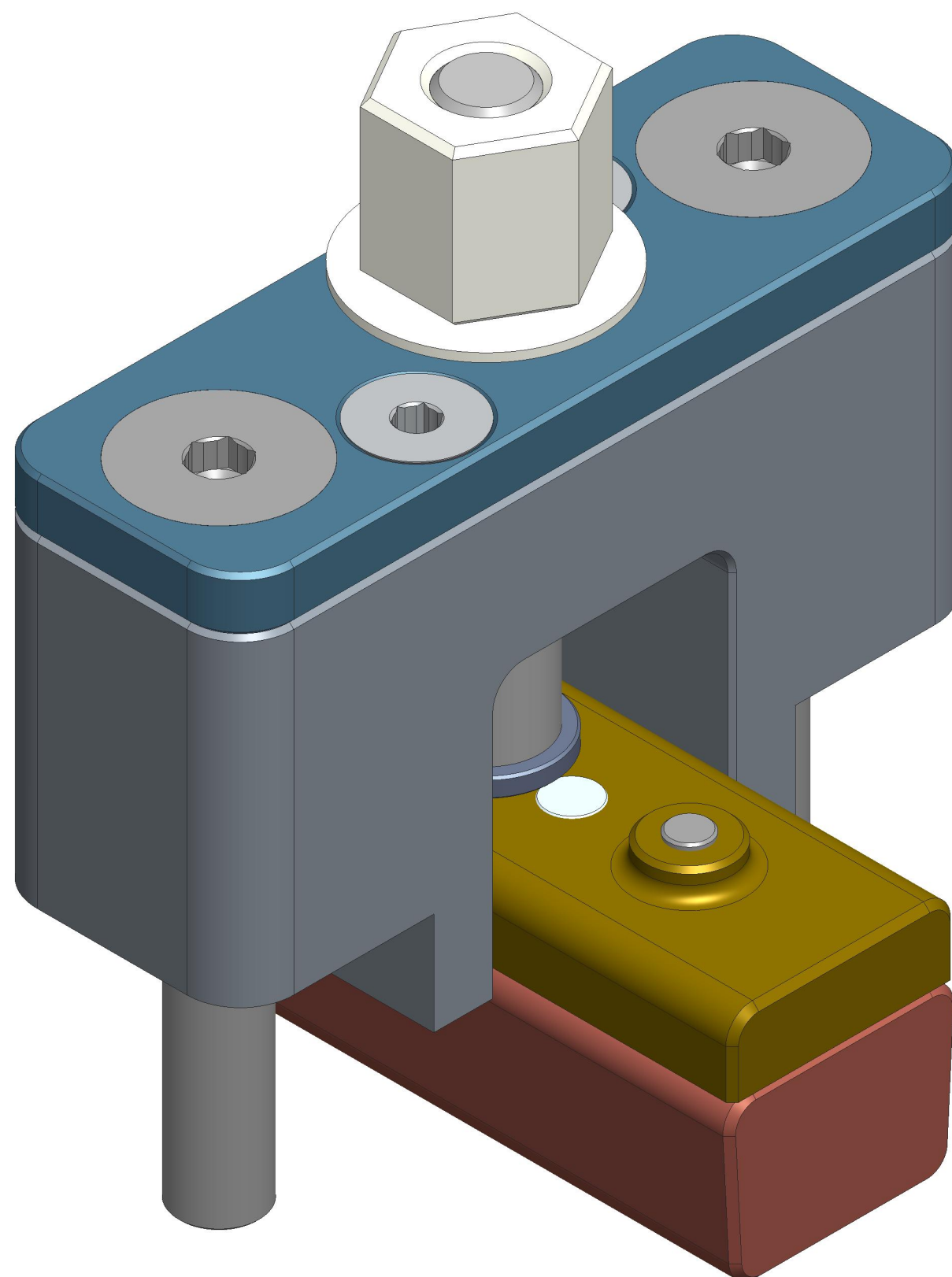
DRAWING/PART NO.

520-100-9010

B

REV
1

SHT
2



A

A

UNIVERSAL SONAR MOUNT

ASSY, SHEAR BLOCK TOWER

SIZE	CUSTOMER DRAWING/PART NO.	REV
C	---	1
	DRAWING/PART NO. 520-100-9010	

SCALE 2.000 SHEET 2 OF

4

3

2

1