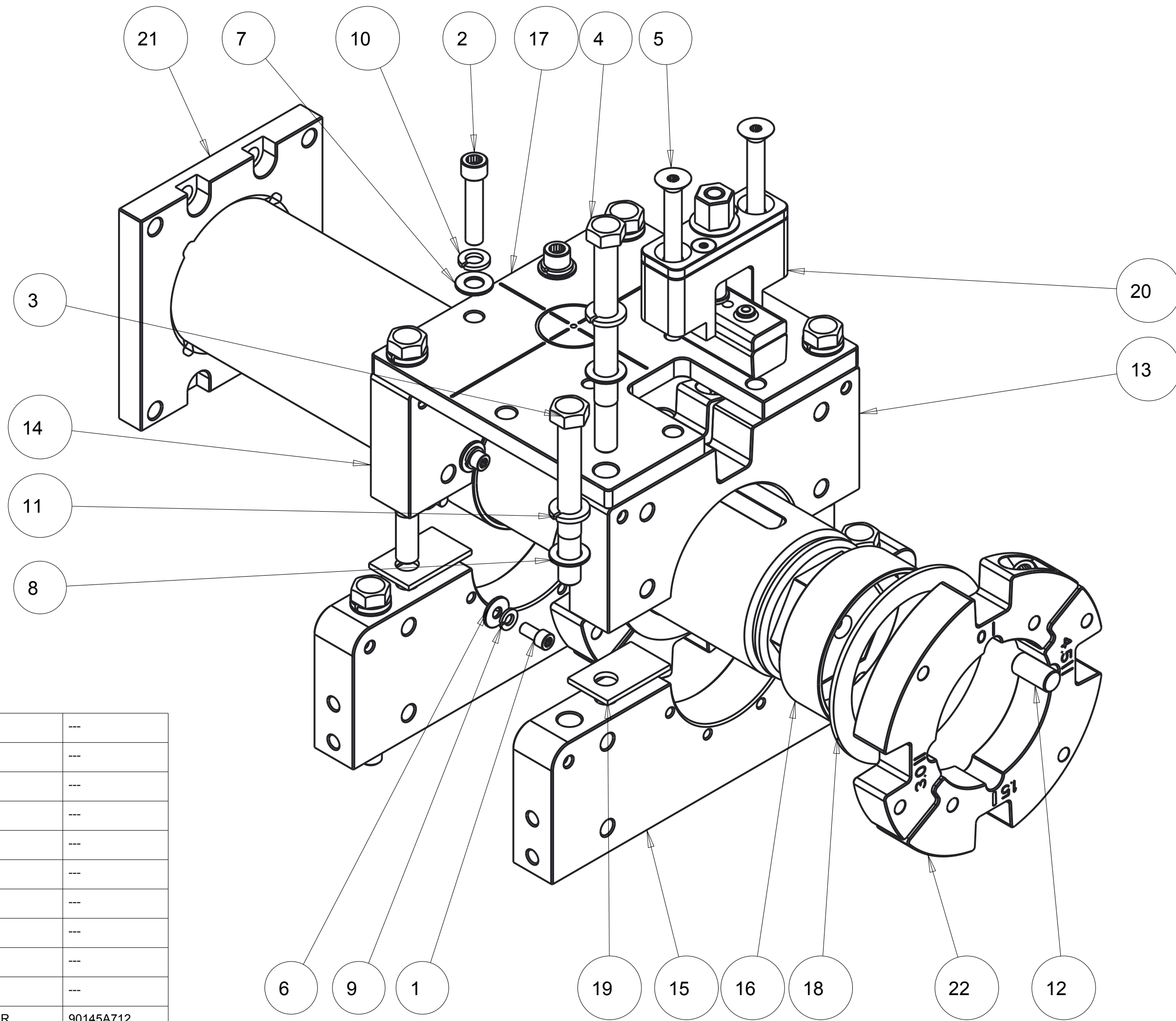


REVISIONS				
ZONE	REV	DESCRIPTION	DATE	APPROVED
--	1	INITIAL RELEASE		--
	2	KEEPER WASHER INCREASEAD OD	02016-OCT-14	



22	2	520-100-9035	ASSY, CLAMP RING, INDEXED, 3.5"	ASSY	---
21	1	520-100-9031	ASSY, 3.5" X-POLE-XX	ASSY	---
20	1	520-100-9010	ASSY, SHEAR BLOCK TOWER	ASSY	---
19	4	520-100-1027	SHIM, CLAMP BLOCK	FAB	---
18	2	520-100-1026	X POLE THRUST BUSHING, 3.5	FAB	---
17	1	520-100-1025	BRIDGE PLATE, COMPACT MOUNT	FAB	---
16	2	520-100-1004	BUSHING, X-POLE, 3.5"	FAB	---
15	2	520-100-1002	BOTTOM BLOCK, COMPACT MOUNT	FAB	---
14	1	520-100-1001-02	TOP BLOCK, W/ KEEPER	FAB	---
13	1	520-100-1001-01	TOP BLOCK, W/ NOTCH	FAB	---
12	1	90-400-500-1000-20	DOWEL PIN, .500 ID X 1.0 L 18-8	MCMASTER	90145A712
11	8	90-310-510-870-120-20	WASHER, SPLIT LOCK .510 ID X .87 OD X .120TK, 18-8 SST	MCMASTER	92146A033
10	2	90-310-380-680-090-20	WASHER, SPLIT LOCK .380 ID X .68 OD X .090TK, 18-8 SST	MCMASTER	92146A031
9	8	90-310-260-487-062-20	WASHER, SPLIT LOCK .260 ID X .487 OD X .062 TK, 18-8 SST	MCMASTER	92146A029
8	8	90-300-515-875-060-20	WASHER, .515 ID X .875 OD X .060 18-8	MCMASTER	98017A210
7	2	90-300-406-813-060-20	WASHER, .406" ID X .813" OD X .060" TH, 18-8 SST	MCMASTER	96659A108
6	8	90-300-252-709-065-20	WASHER, .252 X .709X .065 THICK SST	MCMASTER	91116A150
5	2	90-110-375C-3000-20	SCREW, 3/8-16 UNC X 3.0 FHC 18-8	MCMASTER	92210A636
4	4	90-104-500C-5500-20	HEX BOLT, 1/2-13 X 5.5 SST 18-8	MCMASTER	92198A734
3	4	90-104-500C-4250-20	HEX BOLT, 1/2-13 X 4.250 SST 18-8	MCMASTER	92198A729
2	2	90-100-375C-1750-20	SCREW, 3/8-16 X 1.75 SHC 18-8	MCMASTER	92196A630
1	8	90-100-250C-500-20	SCREW, 1/4-20 X .50 SHC 18-8	MCMASTER	92196A537
ITEM NO.	QTY REQD.	PART OR IDENTIFYING NO.	DRAWING TITLE OR DESCRIPTION	MANUFACTURER	MFG PART NO.

UNLESS OTHERWISE SPECIFIED DIMENSIONS ARE IN INCHES.	PRO/E REPORTED PARAMETERS		DESIGNER	
	TOLERANCES ARE:	PRO/E MATERIAL	G STAPLES	
.X +/- 0.1	N/A	ENGINEER	G STAPLES	02016-OCT-07
.XX +/- 0.01	PRO/E MASS	DRAFTER	G STAPLES	02016-OCT-07
.XXX +/- 0.001	39.70	CHECKED	---	02016-MMM-DD
ANGLES +/- 0.5	PRO/E VOLUME	DO NOT SCALE DRAWING		
INTERPRET DIMENSIONS PER ASME Y14.5M 1994 (R2004)	PRO/E DRAWING FILE NAME:	520-100-9001		

UNIVERSAL SONAR MOUNT		
ASSY, BASE UNIT, COMPACT MOUNT		
SIZE	CUSTOMER DRAWING/PART NO.	REV
C	---	2
DRAWING/PART NO.		
520-100-9001		
SCALE	0.500	SHEET 3 OF

CUSTOMER DRAWING/PART NO. ---  
 DRAWING/PART NO. 520-100-9001  
 REV 2  
 SHT 1

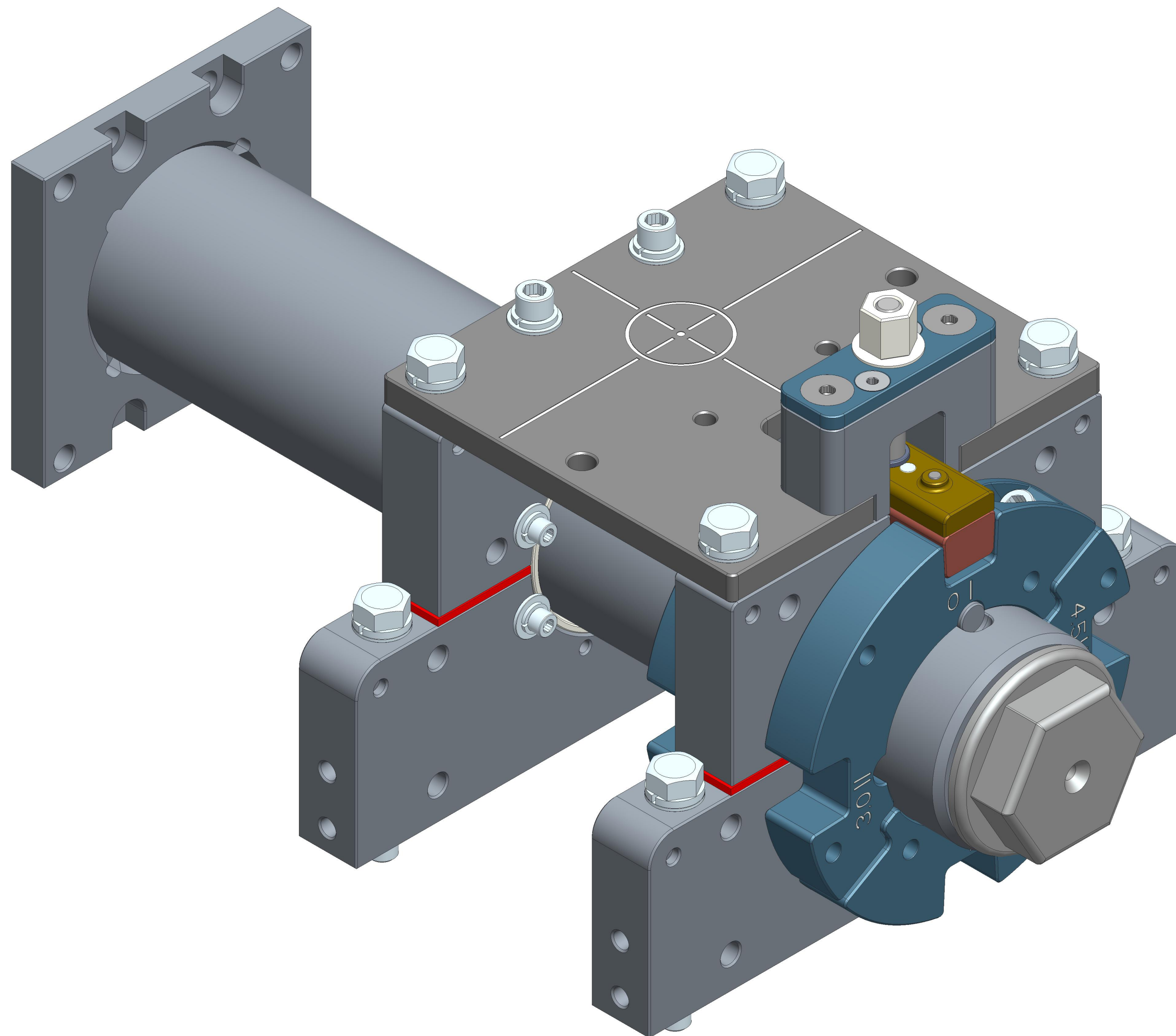
4

3

2

1

REVISIONS  
SEE SHEET 1



UNIVERSAL SONAR MOUNT

ASSY, BASE UNIT, COMPACT MOUNT

SIZE	CUSTOMER DRAWING/PART NO.	REV
<b>C</b>	---	2
	DRAWING/PART NO. 520-100-9001	
SCALE	0.750	SHEET 3 OF

CUSTOMER DRAWING/PART NO.

DRAWING/PART NO.

520-100-9001

REV

2

SHT

2

A

4

3

2

1

D

D

C

B

A

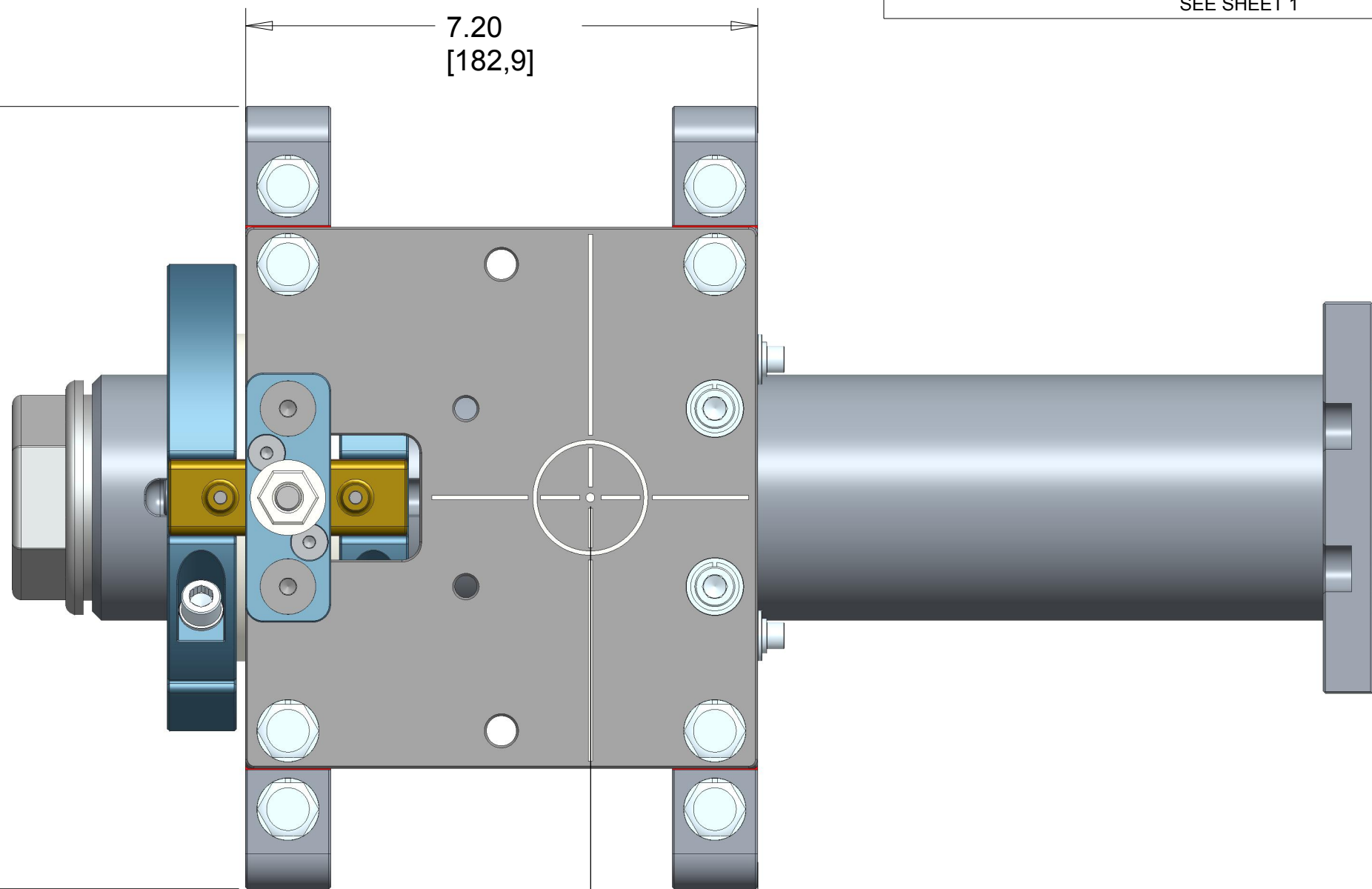
4

3

2

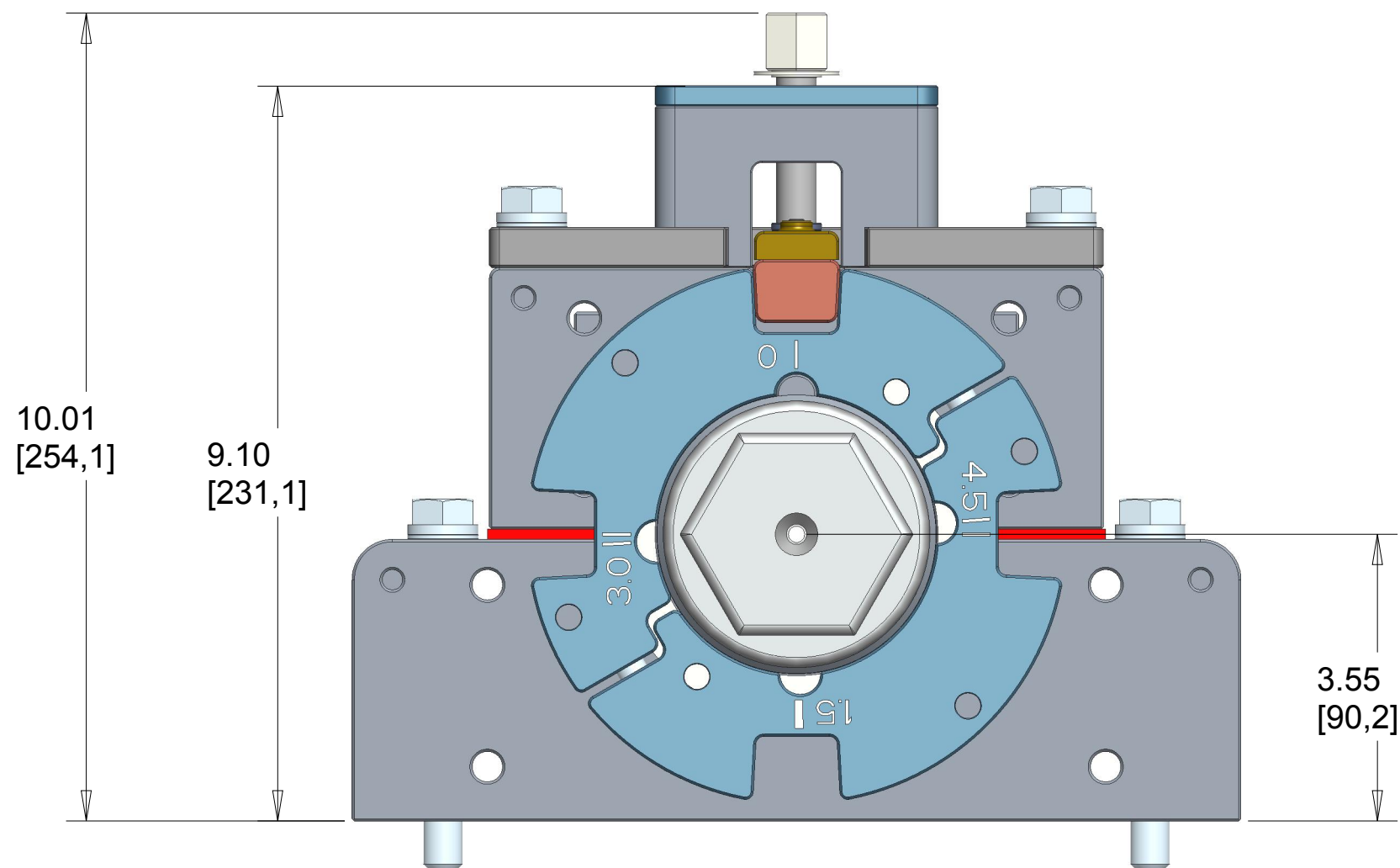
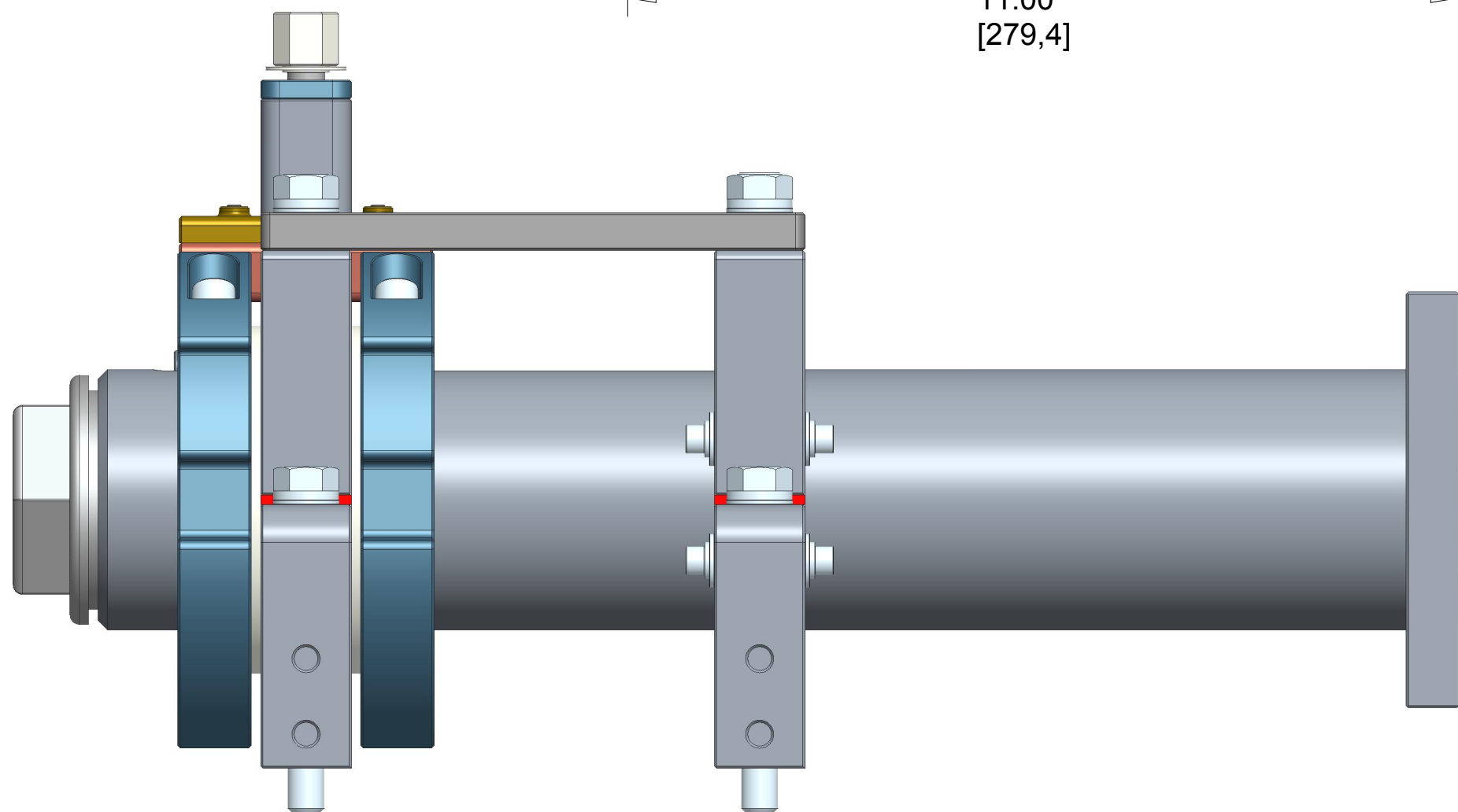
1

REVISIONS  
SEE SHEET 1



2.35  
[59,7]

11.00  
[279,4]



UNIVERSAL SONAR MOUNT		
ASSY, BASE UNIT, COMPACT MOUNT		
SIZE	CUSTOMER DRAWING/PART NO.	REV
<b>C</b>	---	2
	DRAWING/PART NO.	
	520-100-9001	
SCALE	0.500	SHEET 3 OF

CUSTOMER DRAWING/PART NO.

---

DRAWING/PART NO.

520-100-9001

REV

2

SHT

3

A

D

D

C

B

A

4

3

2

1