

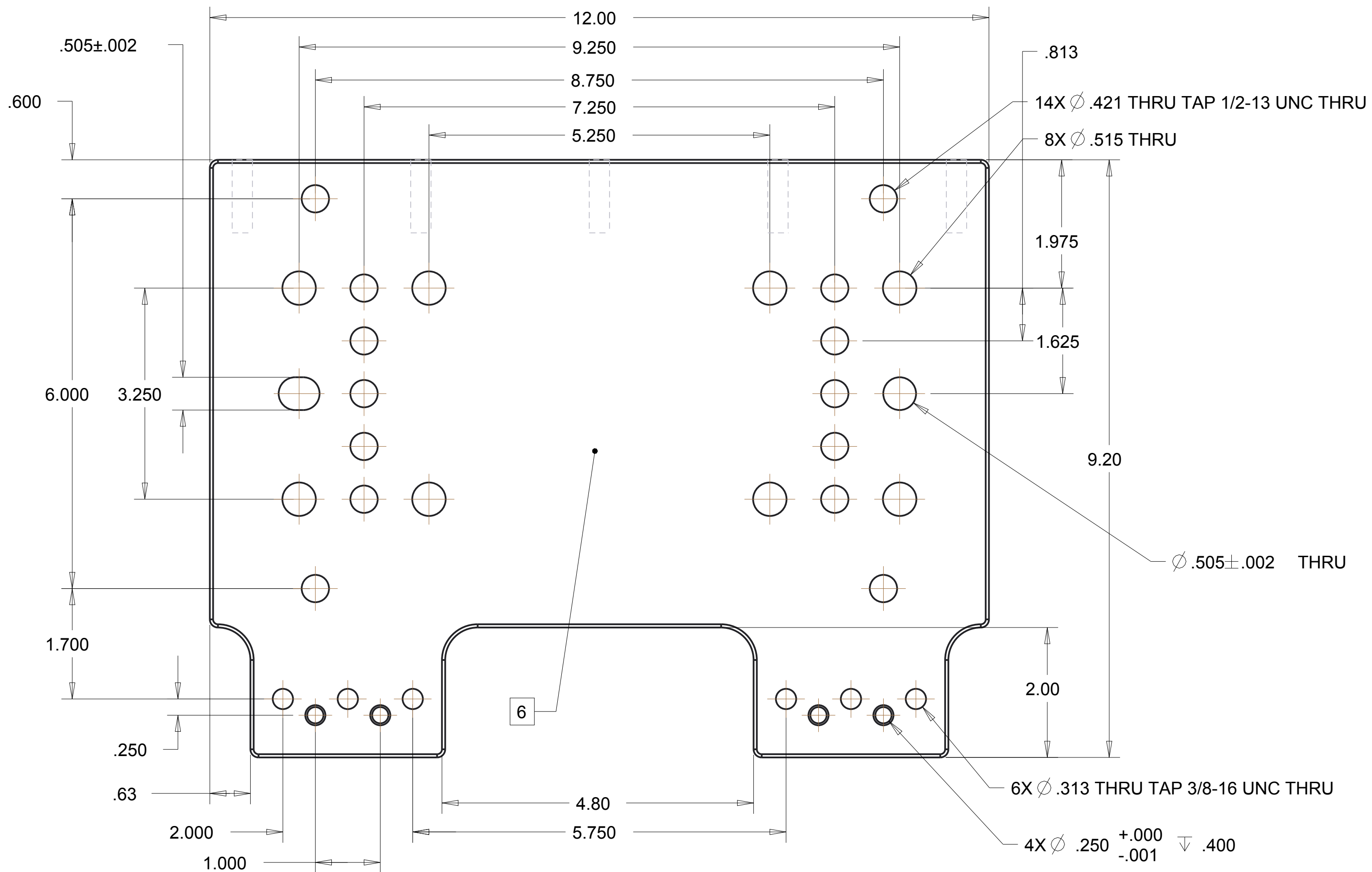
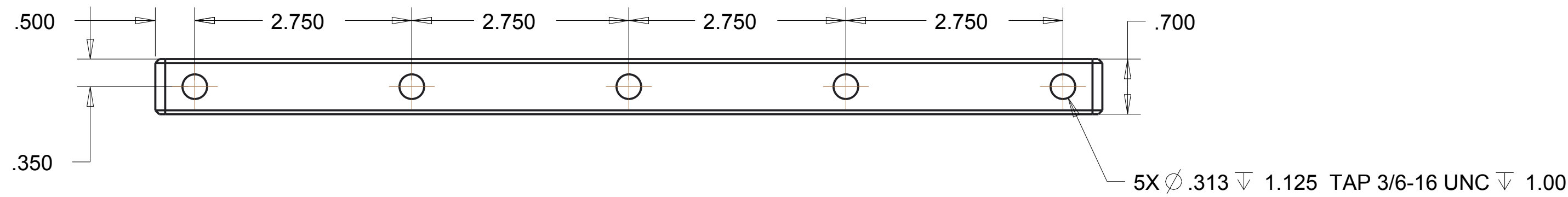
4

3

2

1

REVISIONS				
ZONE	REV	DESCRIPTION	DATE	APPROVED
--	1	INITIAL RELEASE	SA	--



NOTES: UNLESS OTHERWISE SPECIFIED.

1. FOR DIMENSIONS NOT SHOWN SEE COMPUTER GENERATED FILE: 520-100-1020 REV: 1

2. MATERIAL: AL 6061

3 FINISH: 64RMS

4. PLATING: ANODIZE TYPE III CLASS 2 (DYED HARD COAT, BLACK) W/ TEFLON SEAL (IMMERSION)

5. BREAK AND DEBURR ALL SHARP EDGES.

6 MARK ITEM WITH PART NUMBER AND LATEST REVISION LEVEL
0.125-0.250 HIGH CHARACTERS APPROXIMATELY WHERE SHOWN. USE PERMANENT INK OF CONTRASTING COLOR.

UNLESS OTHERWISE SPECIFIED DIMENSIONS ARE IN INCHES. TOLERANCES ARE:	PRO/E REPORTED PARAMETERS	DESIGNER	
		G STAPLES	
.X +/- 0.1	PRO/E MATERIAL AL6061	ENGINEER G STAPLES	02016-JUN-02
.XX +/- 0.01	PRO/E MASS 6.385	DRAFTER G STAPLES	02016-JUN-02
.XXX +/- 0.005	PRO/E VOLUME 65.210	CHECKED ---	02016-mmm-dd
ANGLES +/- 0.5	PRO/E DRAWING FILE NAME: 520-100-1020	DO NOT SCALE DRAWING	
INTERPRET DIMENSIONS PER ASME Y14.5M 1994 (R2004)			

UNIVERSAL SONAR MOUNT

BASE PLATE, SM MOUNT

SIZE	CUSTOMER DRAWING/PART NO.	REV
C	---	1
	DRAWING/PART NO. 520-100-1020	
SCALE	0.750	SHEET 1 OF

4

3

2

1

CUSTOMER DRAWING/PART NO.

DRAWING/PART NO.

520-100-1020

REV

1

SHT

1

A