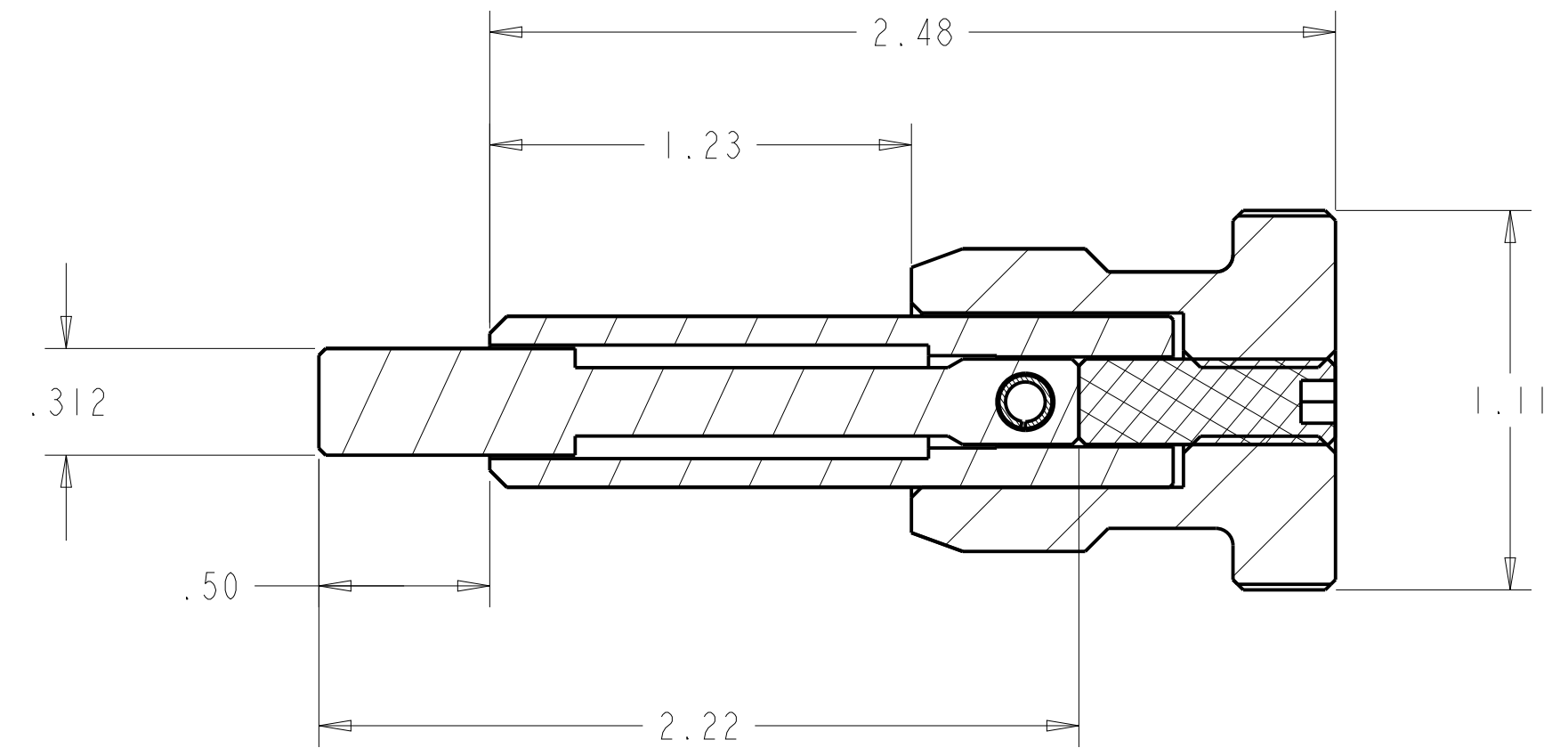
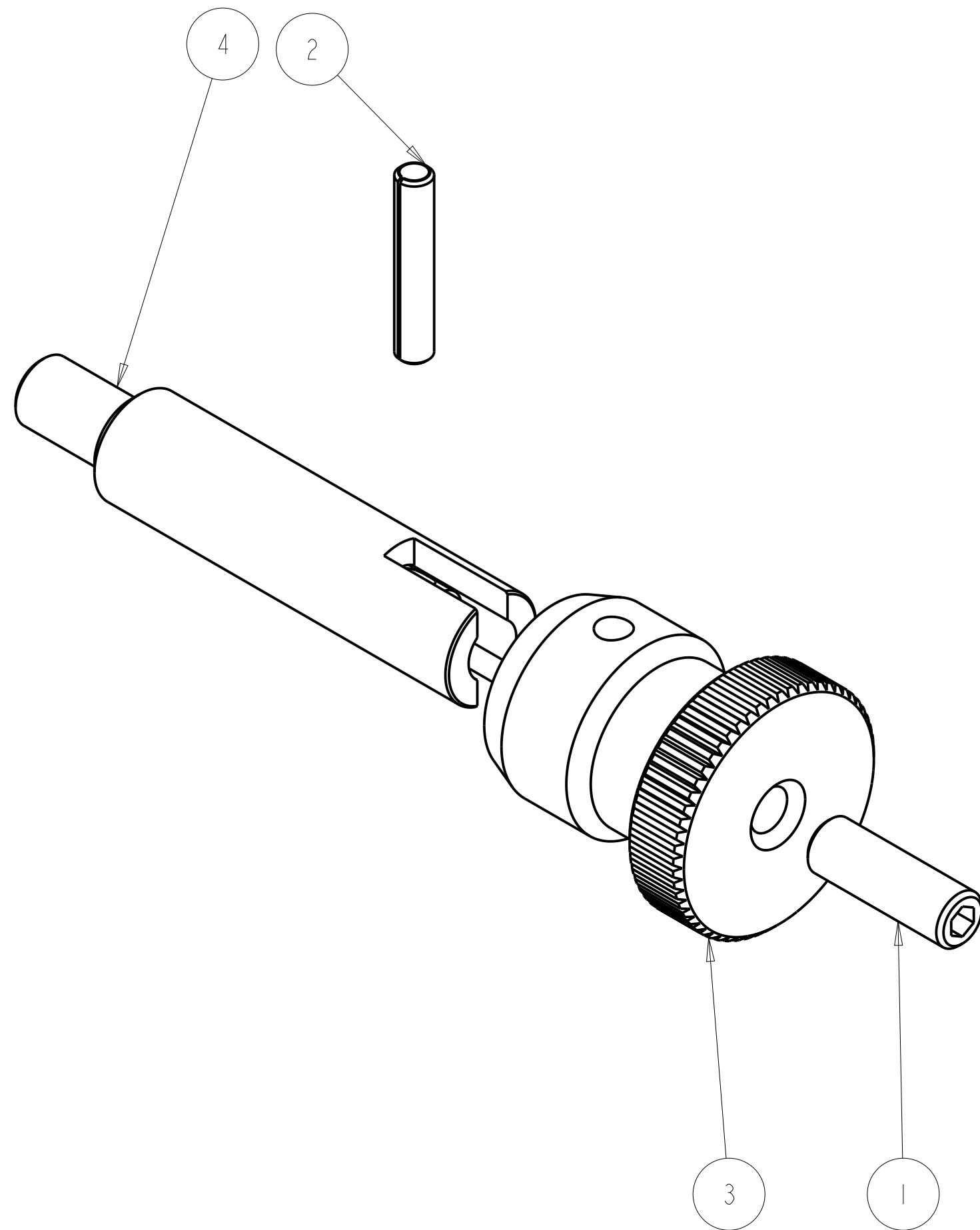


REVISIONS				
ZONE	REV	DESCRIPTION	DATE	APPROVED
--	1	INITIAL RELEASE	02011-FEB-15	--
	2	UPDATED SECTION AND COLORS	02011-NOV-14	



SECTION A-A

ITEM NO.	QTY RECD.	PART NO.	DRAWING TITLE OR DESCRIPTION	MANUFACTURER	MFG PART NO.
4	1	501-1902	RETRACTABLE PIN, 1/2-13 LOCKING, RING, SST	MCMASTER	8500A33
3	1	501-1901-B	CAP, LOCKING PULL PIN, BLUE	FAB	---
2	1	90-410-156-875-21	SPLIT SPRING PIN, 5/32 X 7/8, SST	MCMASTER	92373A216
1	1	90-150-250C-750-21	SET SCREW, 1/4 -20 X 3/4 FLATPOINT, SST	MCMASTER	94355A544

UNLESS OTHERWISE SPECIFIED DIMENSIONS ARE IN INCHES. TOLERANCES ARE: .X +/- 0.1 .XX +/- 0.01 .XXX +/- 0.001 ANGLES +/- 0.5 INTERPRET DIMENSIONS PER ASME Y14.5M 1994 (R2004)	PRO/E REPORTED PARAMETERS		DESIGNER	
	PRO/E MATERIAL	N/A	G STAPLES	
	PRO/E MASS	0.161	ENGINEER	G STAPLES 02011-FEB-15
	PRO/E VOLUME	N/A	DRAFTER	G STAPLES 02011-FEB-15
		CHECKED	---	02011-FEB-15
	PRO/E DRAWING FILE NAME: 501-9901-B	DO NOT SCALE DRAWING		

INERTIA LABS		
ASSY, LOCKING PULL PIN, BLUE, USM		
SIZE	CUSTOMER DRAWING/PART NO.	REV
<b>C</b>	---	<b>2</b>
	DRAWING/PART NO. 501-9901-B	
SCALE	2.000	SHEET 1 OF 1

CUSTOMER DRAWING/PART NO. ---  
DRAWING/PART NO. 501-9901-B  
REV 2  
SHT 1