

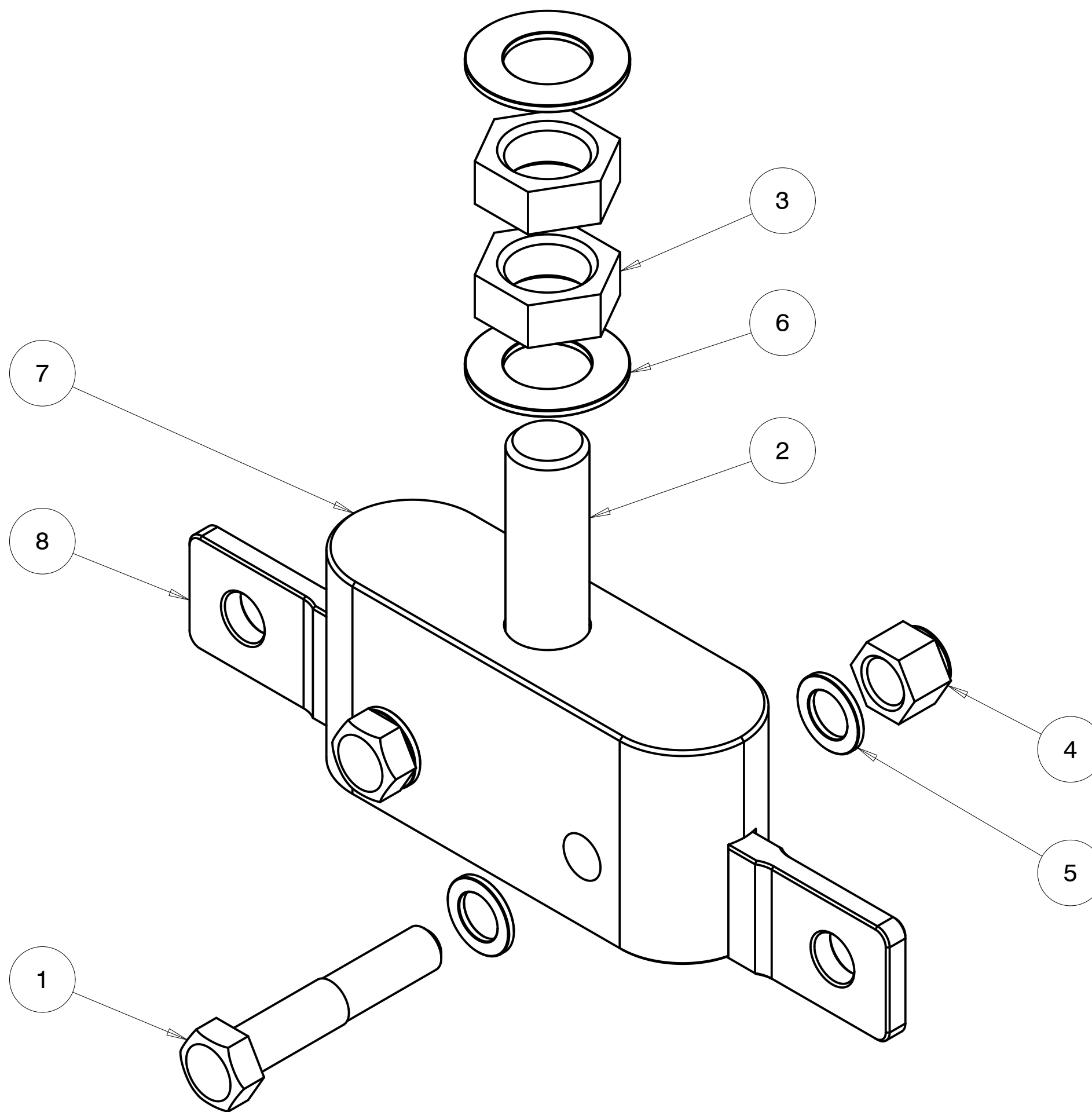
4

3

2

1

REVISIONS				
ZONE	REV	DESCRIPTION	DATE	APPROVED
--	1	INITIAL RELEASE	2023-JAN-25	MZ



ITEM NO.	QTY REQD.	PART NO.	DRAWING TITLE OR DESCRIPTION	MANUFACTURER	MFG PART NO.
8	1	500-507-1006	COLLAPSABLE TIE, CENTER GPS MOUNT	FAB	---
7	1	500-507-1005	CENTER GPS MOUNT	FAB	---
6	2	90-300-640-1190-060-20	WASHER, .640" ID X 1.19" OD X .060" TH, 300 SST	MCMaster	98017A215
5	4	90-300-390-625-060-20	WASHER, .390 X .625 OD X .060 THICK, SST	MCMaster	98017A200
4	2	90-210-375C-20	NYLOCK NUT, 3/8-16 UNC 18-8 SST	MCMaster	91831A127
3	2	90-201-625C-20	JAM NUT, 5/8-11 UNC, SST	MCMaster	91847A540
2	1	90-104-625C-2000-20_	HEXBOLT, 5/8-11UNC X 2.0L, 18-8 SST	MCMaster	92240A770
1	2	90-104-375C-2000-20	HEX BOLT, 3/8-16 UNC X 2.0 18-8 SST	MCMaster	92198A632

UNLESS OTHERWISE SPECIFIED DIMENSIONS ARE IN INCHES.	CREO REPORTED PARAMETERS	DESIGNER	
		G STAPLES	
TOLERANCES ARE:	CREO MATERIAL	ENGINEER	G STAPLES
.X +/- 0.1	CREO MASS	G STAPLES	2023-JAN-25
.XX +/- 0.01	2.720	DRAFTER	M ZASSO
.XXX +/- 0.001	CREO VOLUME	CHECKED	---
ANGLES +/- 0.5	9.805		2022-MMM-DD
INTERPRET DIMENSIONS PER ASME Y14.5M 1994 (R2004)	CREO DRAWING FILE NAME:	DO NOT SCALE DRAWING	
	500-507-9005		

UNIVERSAL SONAR MOUNT		
ASSEMBLY, CENTER GPS MOUNT		
SIZE	CUSTOMER DRAWING/PART NO.	REV
C	---	1
DRAWING/PART NO.		
500-507-9005		
SCALE	1.250	SHEET 1 OF 2

4

3

2

1

CUSTOMER DRAWING/PART NO. ---  
 DRAWING/PART NO. 500-507-9005  
 REV 1  
 SH1 1

D

D

C

B

A

A

4

3

2

1

REVISIONS  
SEE SHEET 1

CUSTOMER DRAWING/PART NO.

---

DRAWING/PART NO.

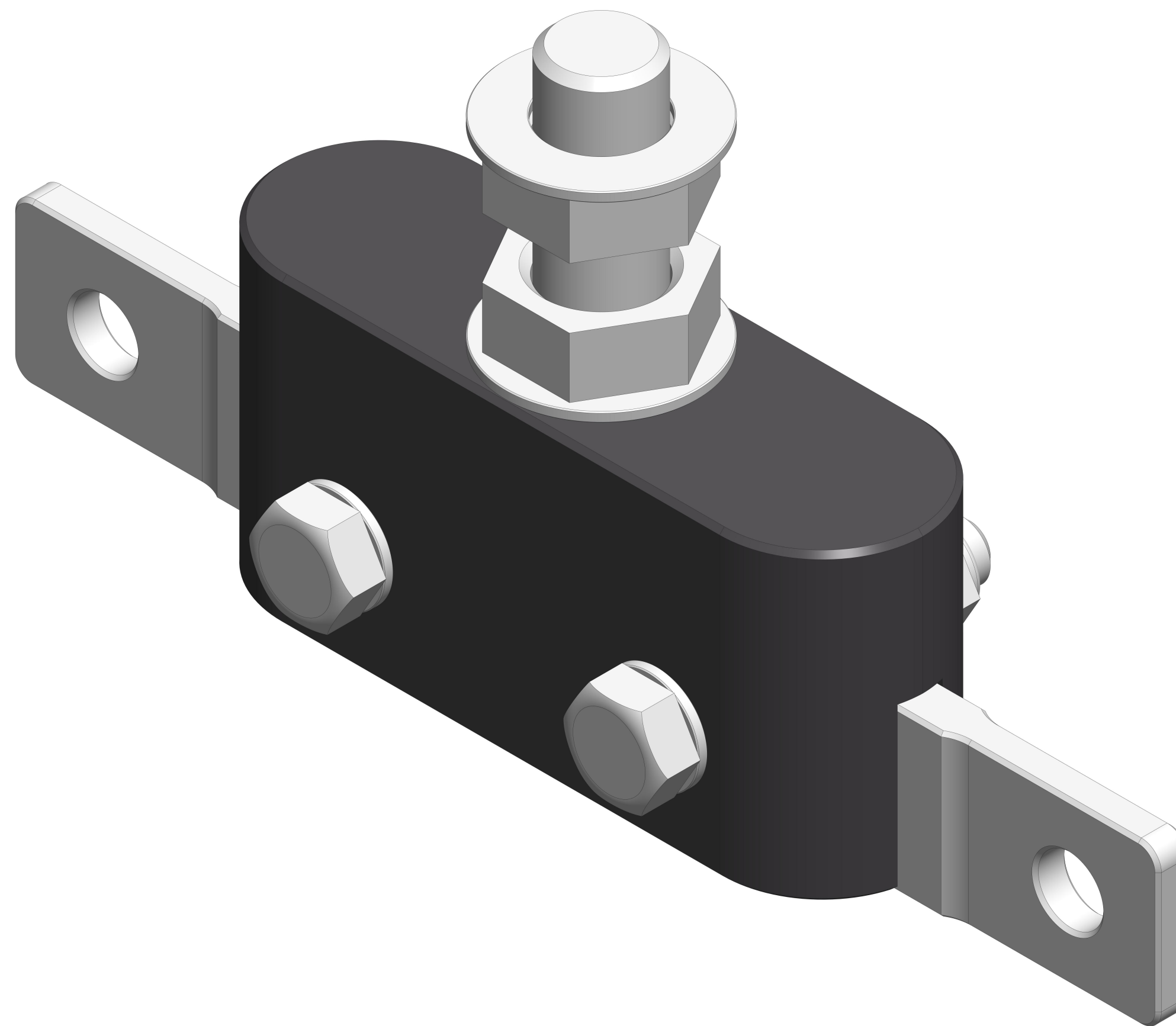
500-507-9005

REV

1

SHT

2



UNIVERSAL SONAR MOUNT		
ASSEMBLY, CENTER GPS MOUNT		
SIZE	CUSTOMER DRAWING/PART NO.	REV
<b>C</b>	---	1
	DRAWING/PART NO. 500-507-9005	
SCALE	2.000	SHEET 2 OF 2

4

3

2

1

A

D

C

B

A

D

C

B

A