

D

C

B

A

D

CUSTOMER DRAWING/PART NO.

DRAWING/PART NO.

500-110-1020

REV

6

SHT

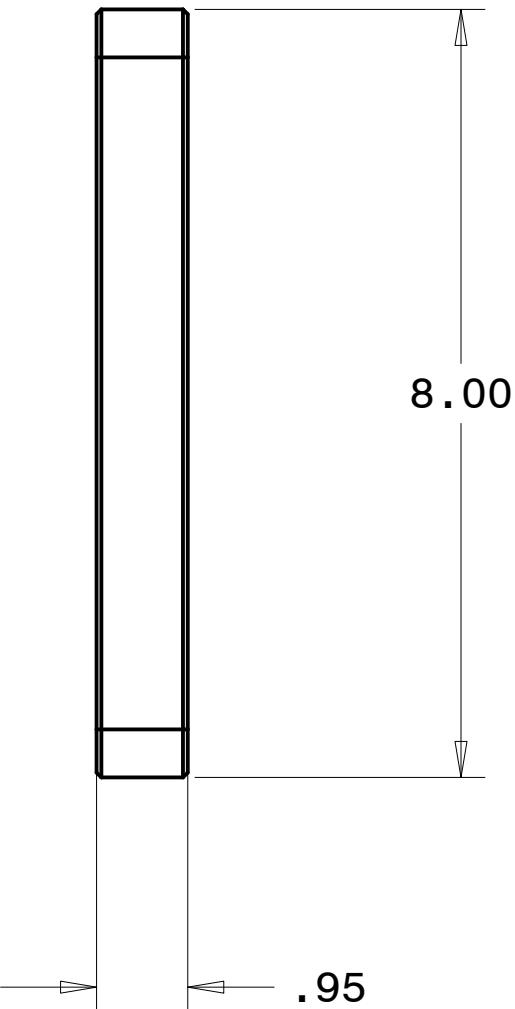
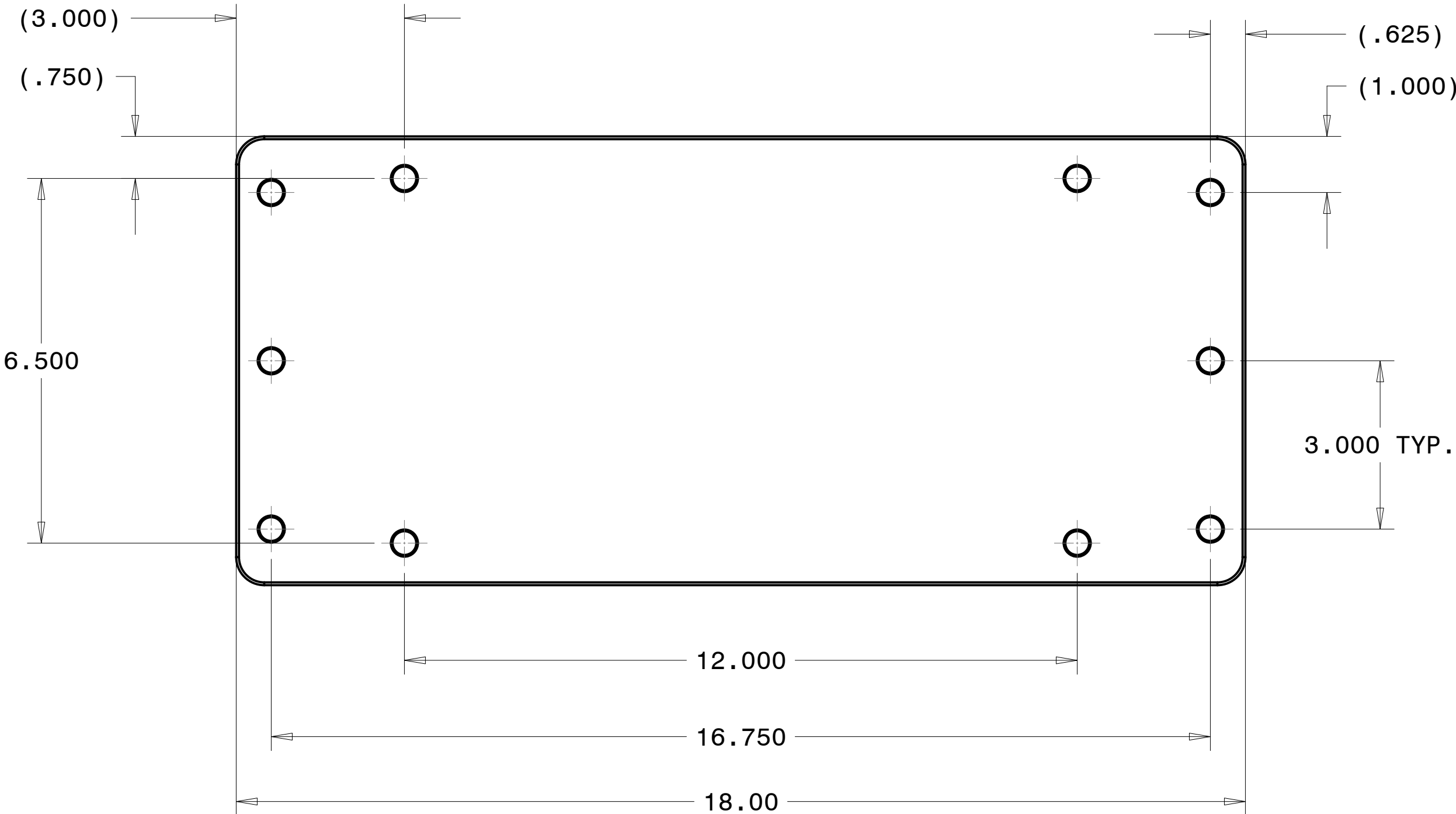
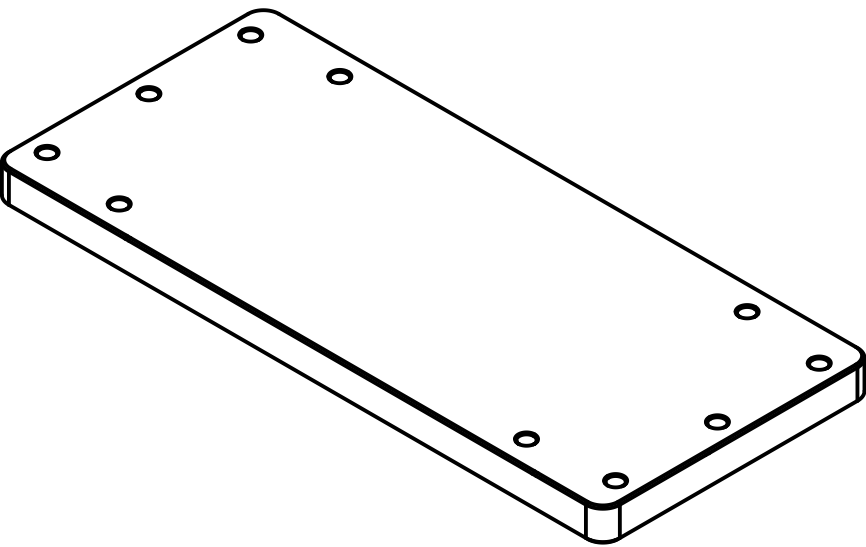
1

A

: UNLESS OTHERWISE SPECIFIED.

1. FOR DIMENSIONS NOT SHOWN SEE COMPUTER GENERATED FILE: 500-110-1020 REV: 6
2. MATERIAL: AL 6061 T6
3. FINISH: TBD
4. PLATING: TBD
5. ALL DIMENSIONS ARE INCLUSIVE OF PLATING.
6. ONE HALF OF A FEATURE DIMENSIONED ACROSS A CENTER LINE AND/OR A SYMMETRIC CALLOUT IS EQUAL TO THE DIMENSION SHOWN DIVIDED BY TWO AND ITS TOLERANCE DIVIDED BY TWO.
7. PAINT: NONE
8. BREAK AND DEBURR ALL SHARP EDGES.
9. PART TO BE FREE FROM DIRT AND OILS.
10. BAG AND TAG WITH PART NUMBER AND LATEST REVISION LEVEL.

REVISIONS				
ZONE	REV	DESCRIPTION	DATE	APPROVED
--	6	IS BOW/STERN BASE PLATE, WAS USM BASE PLATE	2022-AUG-17	MZ



UNLESS OTHERWISE SPECIFIED DIMENSIONS ARE IN INCHES.		CREO REPORTED PARAMETERS		DESIGNER M ZASSO		BASE BLATE, BOW/STERN MOUNT					
		CREO MATERIAL AL6061		ENGINEER M ZASSO 2022-AUG-17							
TOLERANCES ARE: .X +/- 0.1 .XX +/- 0.01 .XXX +/- 0.005 ANGLES +/- 0.5		CREO MASS 13.231		DRAFTER M ZASSO 2022-AUG-17		SIZE C	CUSTOMER DRAWING/PART NO. - - -		REV 6		
		CREO VOLUME 135.127		CHECKED - - - 2022-MMM-DD			DRAWING/PART NO. 500-110-1020				
		CREO DRAWING FILE NAME: 500-110-1020		DO NOT SCALE DRAWING			SCALE 0.5			SHEET 1 OF 1	
		INTERPRET DIMENSIONS PER ASME Y14.5M 1994 (R2004)									