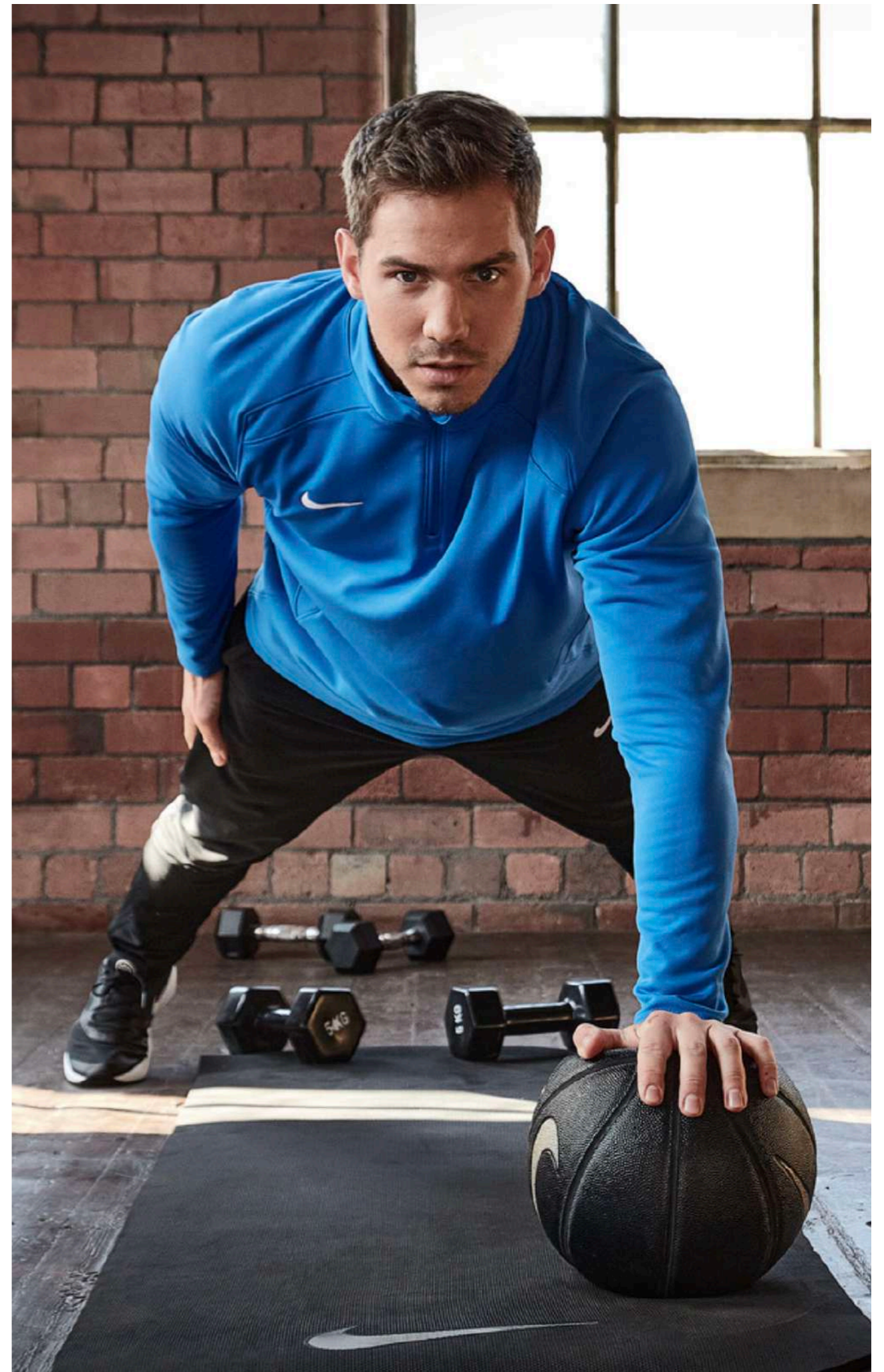


**PPTS**  
pacific team sports 

**GYM / FITNESS**



# OUR STORY

## PTS

Pacific Team Sports (PTS) is your leading destination for Nike Teamwear in Australia and New Zealand. At PTS, sport is within our DNA. We are exclusively bringing the Nike Teamwear range to the Australian and New Zealand market in the largest range of Sports. Built on grassroots basketball right through to the professional leagues and beyond.

- Track and Field
- Corporate Uniforms
- Field Hockey
- Cricket
- Basketball
- Schools
- Training
- Tennis
- Golf
- AFL
- Running
- Volleyball

The world's best sports teams, wear the world's best gear. Our mission is to ensure that you can too.

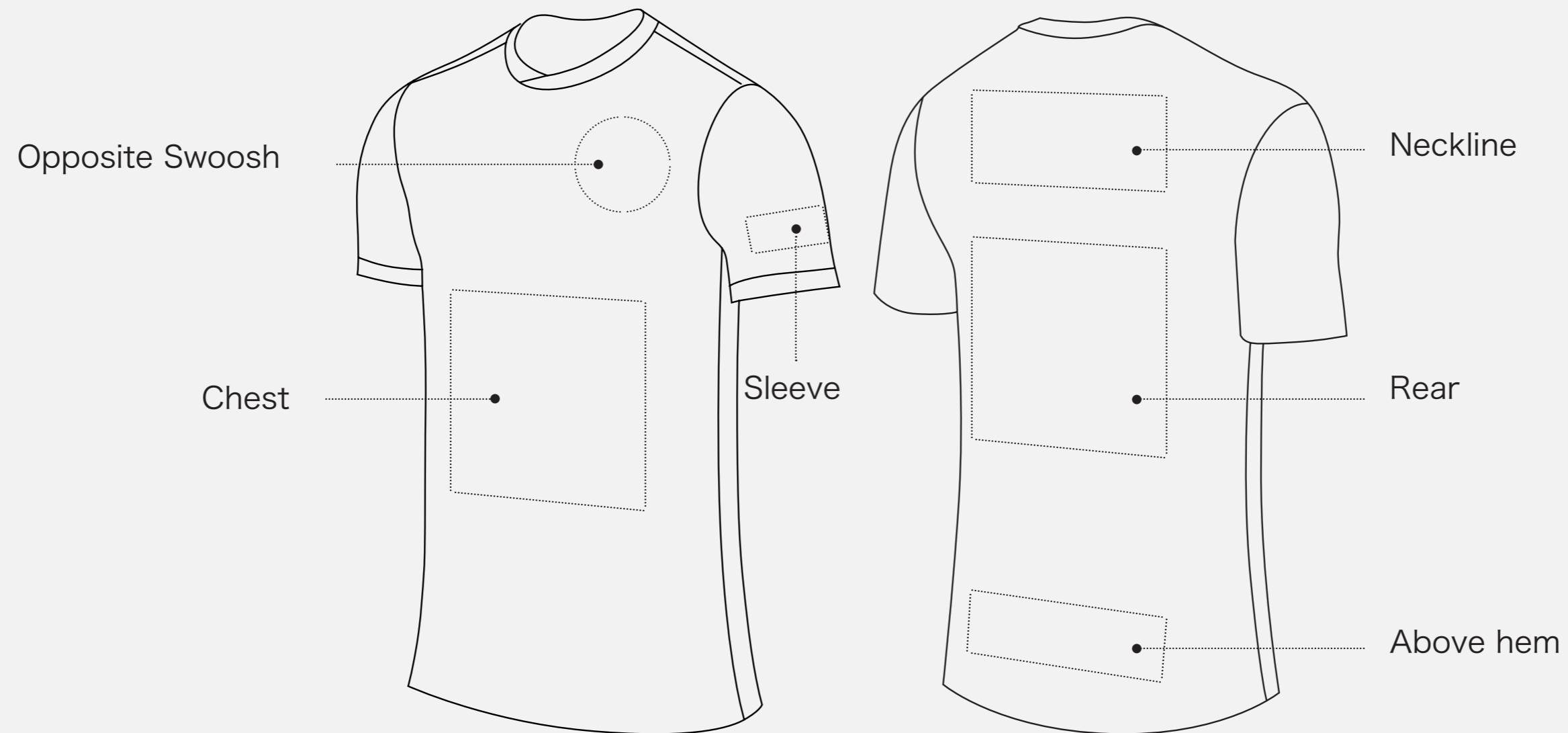
For the first time in Australia you are able to have your entire team or club in customised Nike Teamwear Apparel from the bleachers right through to game day.

**Our supply of Nike Product range stretches from Performance Nike Uniforms, Staff Apparel, Player Warm Up Gear, Off-Court Apparel, Supporter Apparel and Accessories, all completely customised with your team graphics and designs.**

We pride ourselves on not only providing the world's leading brand to the entire marketplace no matter the level of skill or access, but fast production lead times and excellent customer experience.

# CUSTOMISATION

## OPTIONS



The logo/artwork file must be delivered in a High Res PDF or a Vector based EPS file for printing.  
A fee may apply if you need your design converted into these file types.

**PRODUCT**  
CATALOGUE



# PARK 7 TEE

## Product Features:

- Dri-FIT technology helps keep you dry and comfortable.
- Mesh panel on the back adds breathability.
- Smooth, sweat-wicking fabric.

## Sizing:

S - M - L - XL - 2XL

Women sizes available.

## Product code:

BV6708 -



# PARK 7 LONGSLEEVE

## Product Features:

- Dri-FIT technology helps keep you dry and comfortable.
- Mesh panel on the back adds breathability.
- Slim fit for a tailored feel.

## Sizing:

S - M - L - XL - 2XL

## Product code:

BV6706 -

010

451

100



# LEGEND TEE

## Product Features:

- Breathable fabric with Dri-FIT technology helps you stay cool, dry and comfortable.
- Odor-resistant finish helps keep the shirt fresh.

## Sizing:

S - M - L - XL - 2XL - 3XL

## Product code:

718833 -

010

451



# COTTON T-SHIRT

## Product Features:

- Fabric: 100% Cotton
- Everyday tee for on and off court without distraction
- Classic ribbed crew-neck design for a comfortable fit
- Embroidered Nike Swoosh logo delivers iconic sports style

## Sizing:

S - M - L - XL - 2XL - 3XL

Youth sizes available.

## Product code:

0227NZV -

010

451

063





# STOCK

## DRY MILER SINGLET

### Product Features:

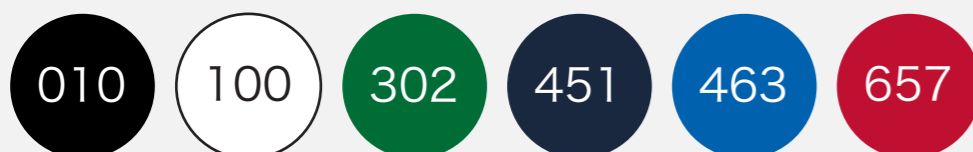
- Side vents let you move freely.
- Dropped back hem helps keep you covered as you move.
- Fabric: 100% polyester.

### Sizing:

S - M - L - XL - 2XL - 3XL

### Product code:

NT0300 -



# POCKETED SHORT

## Product Features:

- 3 pockets provide convenient storage.
- Hem hits above the knee for excellent range of motion.

## Sizing:

S - M - L - XL - 2XL

Product code:  
AA0737 -

010



# TEAM SHORT

## Product Features:

- Standard fit for a relaxed, easy feel.
- 100% Polyester.
- Machine Washable.

## Sizing:

S - M - L - XL - 2XL - 3XL

Women sizes available.

## Product code:

0101NZ -

010

100

451

463

657



# TEAM

## FULL LENGTH TIGHT

### Product Features:

- Nike fabric provides stretch and support.
- Flat, elastic waistband with drawcord.
- Fabric: 92% polyester, 8% elastane.

### Sizing:

S - M - L - XL - 2XL

### Product code:

NT0314 -

010

302

451

657

463



# TEAM

## HALF TIGHT

### Product Features:

- Nike fabric provides stretch and support.
- Inseam length: 6,5" / 16.5 cm (all sizes).
- Flat, elastic waistband with drawcord.
- Fabric: 92% polyester, 8% elastane.

### Sizing:

S - M - L - XL - 2XL

### Product code:

NT0311 -

010

302

451

657

463



# TEAM

## BOY SHORT

### Product Features:

- Nike fabric provides stretch and support.
- Inseam length: 3" / 8 cm (all sizes).
- Flat, elastic waistband with drawcord.
- Fabric: 92% polyester, 8% elastane.

### Sizing:

XS - S - M - L - XL - 2XL

### Product code:

NT0310 -

010

302

451

657

463



# TEAM POLO

## Product Features:

- Fold-over collar with a two-button placket delivers timeless style.
- Performance fit and construction with full mesh back for maximum breathability.
- Standard fit for a relaxed, easy feel.

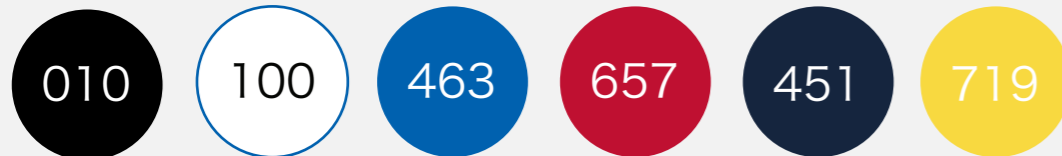
## Sizing:

S - M - L - XL - 2XL - 3XL

Women sizes available.

## Product code:

0100NZ -



# BLEACHERS PARK POLO

## Product Features:

- Fold-over collar with a two-button placket delivers timeless style.
- Shoulder piping inspires a classic look.
- Standard fit for a relaxed, easy feel.

## Sizing:

S - M - L - XL - 2XL

## Product code:

BV6879 -





# DRY ELEMENT

## HALF ZIP

### Product Features:

- Soft And Smooth Fabric Lets You Move Freely.
- Has Nike Dri-Fit Technology To Move Sweat Away From Your Skin For Quicker Evaporation.
- Cool Control: A 1/2-Zippered Design Lets You Adjust Your Airflow And Coverage.

### Sizing:

S - M - L - XL - 2XL - 3XL

### Product code:

NT0315 -

010

463

451

060

012



# DRY ELEMENT

## WOMEN HALF ZIP

### Product Features:

- Soft And Smooth Fabric Lets You Move Freely.
- Has Nike Dri-Fit Technology To Move Sweat Away From Your Skin For Quicker Evaporation.
- Cool Control: A 1/2-Zippered Design Lets You Adjust Your Airflow And Coverage.

### Sizing:

S - M - L - XL - 2XL

### Product code:

NT0316 -

010

302

451

657

463

060

012



# DRY ELEMENT PANT

## Product Features:

- Fabric: 78% Polyester, 22% Spandex.
- Nike Pro fabric provides a supportive and sleek feel.
- Dri-FIT technology offers excellent moisture control.
- 5 inch inseam length

## Sizing:

S - M - L - XL - 2XL

Women sizes available.

## Product code:

NT0317 -

010

451



# BLEACHERS PUFFER GILET

## Product Features:

- Standard fit for a relaxed, easy feel.
- Zip hand pockets.
- Thin elastic trim on armholes and hem.
- 2-way zip.
- Body: 100% polyester. Lining: 100% polyester. Fill: 100% polyester.
- Machine wash

## Sizing:

XS - S - M - L - XL - 2XL - 3XL

## Product code:

0018NZ -

010

451



# BLEACHERS PARK HOODIE

## Product Features:

- Fleece fabric feels soft and warm.
- Drawcord hood lets you adjust your coverage.
- Standard fit for a relaxed, easy feel.
- Front pocket.
- Body: 82% Cotton/18% Polyester.
- Hood lining: 100% Cotton.

## Sizing:

S - M - L - XL - 2XL

Women sizes available.

## Product code:

CW6894 -

010

451

463

657

063



# FRENCH TERRY HOODIE

## Product Features:

- Material: Body/hood lining: 100% cotton. Rib: 98% cotton/2% spandex

- Front pocket

- Ribbed cuffs and hem help keep the hoodie in place while you move

- French terry fabric feels soft and comfortable and features unbrushed loops on the inside

## Sizing:

S - M - L - XL - 2XL - 3XL

Youth sizes available.

## Product code:

0227NZ -

010

451

063



# DRI FIT TRACKSUIT JACKET

## Product Features:

- Dri-FIT double knit Nike basketball classic travel hoodie.
- 3 Panel Hood with drawcord.
- Deep pockets for comfort and travel storage.
- Self fabric hem and cuffs.
- Fabric: 100% polyester.

## Sizing:

S - M - L - XL - 2XL - 3XL LT- XLT-  
2XLT- 3XLT

Women sizes available.

## Product code:

NT0205 -

010

451

657



# DRI FIT

# TRACKSUIT

# PANT

## Product Features:

- Dri-FIT double knit zip pocket on right leg for extra storage when travelling.
- Tapered leg for tailored fit.
- Internal elastic waistband and drawcord for customized fit.
- Fabric: 100% polyester.

## Sizing:

S - M - L - XL - 2XL - 3XL LT- XLT-  
2XLT- 3XLT

Women sizes available.

## Product code:

NT0207 -

010





# TEAM

## WOVEN JACKET

### Product Features:

- Weather resistant fabric.
- Hooded design.
- Reflective tape.
- Zippered pockets.
- Fabric. Body 100% nylon, pockets 100% polyester

### Sizing:

S - M - L - XL - 2XL - 3XL

Women sizes and other colours  
available.

### Product code:

NT0319 -

010

451



# TEAM

## WOVEN PANT

### Product Features:

- Weather resistant fabric.
- Zipped hem.
- Reflective tape.
- Zippered pockets.
- Fabric: Body 100% nylon.

### Sizing:

S - M - L - XL - 2XL

Women sizes available.

### Product code:

NT0321 -

010

451



**NIKE**

# SWOOSH BRA

**Product Features:**

- Ideal for medium intensity exercise.
- Dri-FIT technology provides superior moisture management.
- Removable one-piece pad offers a comfortable fit that doesn't shift.
- Tight, body-hugging fit

**Sizing:**

S - M - L - XL

**Low volume of stock\***

**Product code:**

BV3636 -

010



# NIKE PRO

## 3/4 TIGHT

### Product Features:

- Nike Pro Dri-FIT Tights hug you with lightweight fabric that helps you feel dry, cool and supported from warm-ups through to cool-downs.

### Sizing:

S - M - L - XL

Low volume of stock\*

### Product code:

DD1919 -

010



# **DRI-FIT**

## **AeroBill**

### **Featherlight**

#### **Product Features:**

- Stay covered on your runs with the Nike Dri-FIT AeroBill Featherlight Cap. Its ventilated design provides cooling, while an adjustable back strap allows you to choose your fit.

#### **Sizing:**

O/S

#### **Product code:**

DD1919 -

010



# ELITE SOCKS

## Product Features:

The Nike Elite Crew Basketball Socks offer a supportive fit and feel thanks to an arch band, while zonal cushioning helps absorb impact as you run the court.

## Sizing:

S - M - L - XL - 2XL



# ACADEMY BACKPACK

## 30L Product Features:

- Back pocket features a felt interior to safely store your phone or keys.
- Mesh pocket on the side is designed to hold a water bottle. Dual-zippered main compartment holds all your gear.
- Large enough to fit a Basketball.

## 22L Product Features:

- Curved shoulder straps and back panel are padded for extra comfort.
- Mesh pocket on the side is designed to hold a water bottle.
- Internal sleeve safely stores up to a 15" laptop

Product code:  
DC2647 -

010

451

Product code:  
DA2571 -

010

451



30L



# BRASILIA

## DUFFLE

### Product Features:

- Zipped main compartment secures your training essentials.
- Zipped inner compartment keeps dirty shoes and sweaty clothes separate from your clean gear.
- Coated bottom helps shield your things from bumps, scrapes and spills.
- Outer pockets keep your quick must-haves within reach.

Product code:  
CU8090 -

010

451





## Mens Size Chart Regular (5'7" - 6'0"/170 - 183cm)

### MENS TOP

SIZE	CHEST (cm)	WAIST (cm)	HIPS (cm)
S	88-96	73-81	88-96
M	96-104	81-89	96-104
L	104-112	89-97	104-112
XL	112-124	97-109	112-120
2XL	124-136	109-121	120-128
3XL	136-148	121-133	128-136

### MENS BOTTOM

SIZE	WAIST (cm)	HIPS (cm)	REGULAR INSIDE LEG	SHORT INSIDE LEG
XS	< 73	< 88	82	77
S	73-81	8-96	82.5	77.5
M	81-89	6-104	37	8
L	89-97	104-112	83.5	78.5
XL	97-109	112-120	84	79
2XL	109-121	120-128	84.5	79.5
3XL	121-133	128-136	85	80
4XL	133-145	36-148	85.5	80.5

## Mens Size Chart Big and Tall (6'0" - 6'5"/183 - 196cm)

### MENS TOP

SIZE	CHEST (cm)	WAIST (cm)	HIPS (cm)
S TALL	88-96	73-81	88-96
M TALL	96-104	81-89	96-104
L TALL	104-112	89-97	104-112
XL TALL	112-124	97-109	112-120
2XL TALL	124-136	109-121	120-128
3XL TALL	136-148	121-133	128-136
4XL TALL	147-160	133-145	136-148

### MENS BOTTOM

SIZE	WAIST (cm)	HIPS (cm)	INSIDE LEG LENGTH (cm)
S TALL	73-81	8-96	87.5
M TALL	81-89	6-104	8
L TALL	89-97	104-112	88.5
XL TALL	97-109	112-120	9
2XL TALL	109-121	120-128	89.5
3XL TALL	121-133	128-136	90
4XL TALL	133-145	36-148	90.5

## Womens Size Chart Regular

### WOMENS TOP

INCHES/CM	AVERAGE EU SIZE **	BUST (cm)W	AIST (cm)H	IPS (cm)
XS	32-347	6-83	60-678	4-91
S	36-388	3-90	67-749	1-98
M	40-429	0-977	4-81	98-105
L	44-469	7-1048	1-88	105-112
XL	48-50	104-1148	8-98	112-120
XXL	52-54	114-124	98-108	120-128

## International size conversion

### WOMENS TOP

NIKE SIZE	UU	KF	RI	TU	S
XS	32-344	-6	34-363	6-38	0-2
S	36-388	-103	8-40	40-424	-6
M	40-421	2-14	42-444	4-46	8-10
L	44-461	6-18	46-484	8-50	12-14
XL	48-502	0-22	50-525	2-54	16-18
XXL	52-542	4-26	54-565	6-58	20-22

### WOMENS BOTTOM

NIKE SIZE	AVERAGE US SIZE **	WAIST (in)	HIPS (in)	REGULAR INSIDE LEG LENGTH (in)	TALL INSIDE LEG LENGTH (in)	SHORT INSIDE LEG LENGTH (in)
XS	0-22	3.5-26	33-35.53	1.23	3.25	29.25
S	4-6	26-293	5.5-38.5	31.2	33.252	9.25
M	8-10	29-31.53	8.5-41	31.5	33.5	29.5
L	12-143	1.5-34.5	41-443	1.53	3.52	9.5
XL	16-183	4.5-38.5	44-473	1.75	33.752	9.75
XXL	20-223	8.5-42.5	47-503	1.75	33.752	9.75

### WOMENS BOTTOM

SIZE	US	EU	UK	FR	IT
XS	0-23	2-34	4-63	4-36	36-38
S	4-63	6-38	8-10	38-404	0-42
M	8-10	40-421	2-14	42-444	4-46
L	12-144	4-46	16-184	6-48	48-50
XL	16-184	8-50	20-225	0-52	52-54
XXL	20-225	2-54	24-265	4-56	56-58

## Kid's Size Chart Regular

### BOYS CLOTHING

ALPHA SIZE	NUMERIC SIZE	CHEST (cm)	WAIST (cm)	HIPS (cm)	HEIGHT (cm)	AGE
XS	6-76	4.5-66	59.5-61.56	8.5-71	122-128	6-7
S	8-9	66-696	1.5-65	71-74.5	128-137	8-9
M	10-126	9-75	65-697	4.5-79.5	137-1471	0-11
L	14-167	5-81.56	9-72.5	79.5-84.51	47-158	12-13
XL	18-208	1.5-88.5	72.5-75.58	4.5-89.51	58-170	14+

### GIRLS CLOTHING

ALPHA SIZE	NUMERIC SIZE	CHEST (cm)	WAIST (cm)	HIPS (cm)	HEIGHT (cm)	AGE
XS	6-76	4.5-68	59.5-61	68.5-731	22-128	6-7
S	8-96	8-73	61-647	3-78.5	128-137	8-9
M	10-127	3-79	64-687	8.5-83.5	137-146	10-11
L	14-167	9-85.5	68-71.5	83.5-88.51	46-156	12-13
XL	18-20	85.5-92.57	1.5-74.58	8.5-93.5	156-166	14+

# FURTHER QUESTIONS

Email: [Sales@pacificteamsports.com](mailto:Sales@pacificteamsports.com)

Social: [@pacificteamsports](#)